

THIS COPY IS PROVIDED ON A RESTRICTED BASIS AND IS NOT TO BE USED IN ANY WAY DETRIMENTAL TO THE INTERESTS OF PANDUIT CORP.

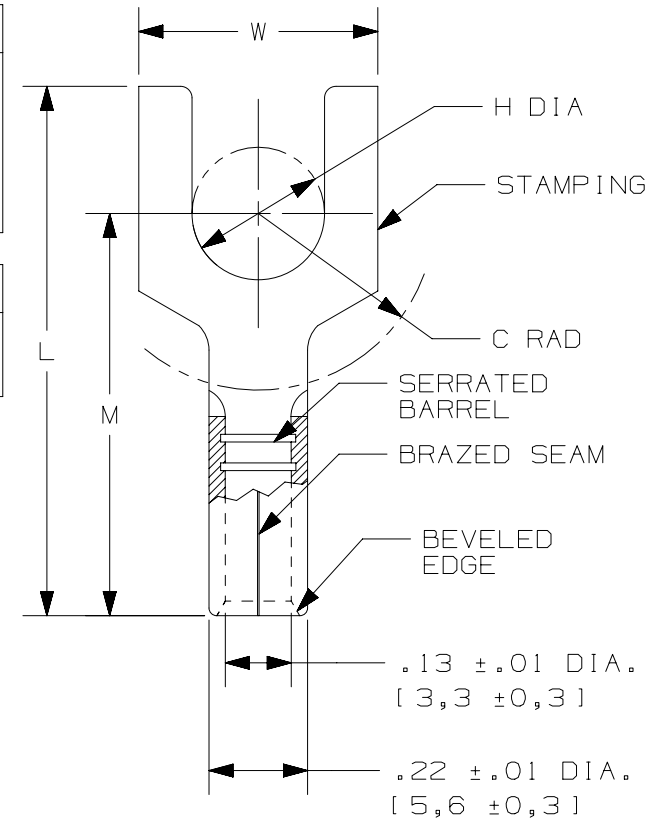
PANDUIT PART #	STUD SIZE		DIMENSIONS in. [mm]				
	ENGLISH	METRIC	L ± .03 [0,8]	W ± .01 [0,3]	C ± .015 [0,4]	M ± .03 [0,8]	H ± .01 [0,3]
P10-6F	#6	M3,5	.75 [19,1]	.31 [7,9]	.22 [5,6]	.55 [14,0]	.15 [3,8]
P10-8F	#8	M4	.78 [19,8]	.37 [9,4]	.22 [5,6]	.55 [14,0]	.17 [4,3]
P10-10F	#10	--	.78 [19,8]	.37 [9,4]	.23 [5,8]	.55 [14,0]	.20 [5,1]
PM6-5F*	--	M5	.76 [19,4]	.37 [9,4]	.28 [7,1]	.55 [14,0]	.21 [5,3]
P10-14F	1/4"	M6	.89 [22,6]	.50 [12,7]	.30 [7,6]	.60 [15,2]	.27 [6,9]

\*NOT CSA CERTIFIED

NOTES:

- UL LISTED & CSA CERTIFIED FOR:
  - #12-10 AWG [ 4,0-6,0 mm<sup>2</sup> ] SOLID OR STRANDED COPPER WIRE
  - 302°F [150°C] MAX. OPERATING TEMPERATURE
  - 2000 VOLTS MAX
- SEE [www.panduit.com](http://www.panduit.com) FOR PACKAGE QUANTITIES
- MATERIAL:
  - STAMPING: .04" [1,0 ] THK COPPER, TIN PLATED
- DIMENSIONS IN BRACKETS ARE METRIC EQUIVALENT
- WIRE STRIP LENGTH:  $9/32" \begin{matrix} +1/32 \\ -0 \end{matrix}$  [7,1mm  $\begin{matrix} +0,8 \\ -0 \end{matrix}$  ]

UL & CSA TOOLS
CT-100A CT-200 CT-600-A (CT-570CH) CT-1570 CT-1701 (P10) CT-2500 (CT-2570CH)
PANDUIT APPROVED TOOLS
CT-160 CT-260



REV	DATE	BY	CHK	APR	DESCRIPTION	ECN
10	05/17	JHNU	TMR	RGB	ADDED CSA BACK TO DRAWING, UPDATED TOOL CHART FORMAT	N41256BB-A41256
09	06/14	MBY	JHNU	RGB	REVISED NOTES, MOVED TOOLS TO TABLE, REVISED CERTIFICATION	N41256BB-A41256
08	09.19.12	JBN	LCA	VMB	ADDED METRIC EQUIVALENT. REVISED NOTES. UPDATED TO CURRENT STANDARDS.	A41256

TITLE <b>FORK, NON-INSULATED, #12-10</b> CUSTOMER DRAWING			
ITEM REVISION NAME N41256BB/10		<b>PANDUIT</b>	
DATASET FILE NAME N41256BB_DC/10A			
UNLESS OTHERWISE SPECIFIED, DIMENSIONAL TOLERANCES ARE: IN [ mm ]		MATERIAL: <b>SEE NOTES</b>	
$.x \pm$ $.xx \pm$		$.xxx \pm$ ANGLES $\pm$	
		DRAWING NUMBER: A41256	
DRAWN BY DAW	DATE	CHK CJH	SCALE N.T.S.
SHEET 1 OF 1		SIZE A	

D10100DA/12

## X-ON Electronics

Largest Supplier of Electrical and Electronic Components

*Click to view similar products for [Terminals](#) category:*

*Click to view products by [Panduit](#) manufacturer:*

Other Similar products are found below :

[00-054007-01074-6](#) [00-054007-70206-1](#) [00-054007-70210-8](#) [00-054007-70217-7](#) [00-054007-70226-9](#) [00-054007-70228-3](#) [00-054007-70248-1](#) [00-054007-70256-6](#) [00-054007-70301-3](#) [00-054007-70316-7](#) [0-0320562-0](#) [00-054007-49560-4](#) [00-054007-70209-2](#) [00-054007-70225-2](#) [00-054007-70227-6](#) [00-054007-70231-3](#) [00-054007-70241-2](#) [00-054007-70242-9](#) [00-054007-70244-3](#) [00-054007-70246-7](#) [00-054007-70263-4](#) [00-054007-70288-7](#) [00-054007-70290-0](#) [00-054007-70300-6](#) [00-054007-70304-4](#) [01-2065-1-0216](#) [01-2900-1-04412](#) [00581P0075](#) [600TS-10](#) [60205-1](#) [604200-1](#) [605601-1](#) [60598-1-CUT-TAPE](#) [61314-6-C](#) [61810-3](#) [61-S](#) [61-SN](#) [626-0194](#) [62-NBM-A](#) [62-SN](#) [62-SP](#) [63-S](#) [640179-1](#) [M55155/059I03](#) [M55155/079C01](#) [M55155/099H02](#) [M55155/109H01](#) [M55155/109H02](#) [M55155/12XH05](#) [M55155/16XH02](#)