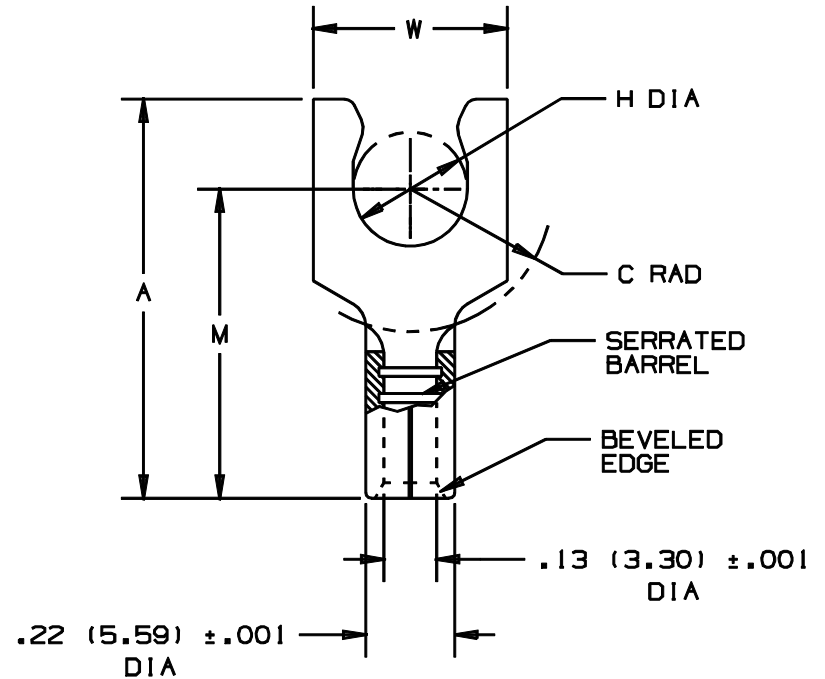


THIS COPY IS PROVIDED ON A RESTRICTED BASIS AND IS NOT TO BE USED IN ANY WAY DETRIMENTAL TO THE INTERESTS OF PANDUIT CORP.

PANDUIT PART NUMBER		STUD SIZE	DIMENSIONS in.				
PREFIX	PKG		A $\pm .03$	W $\pm .01$	C $\pm .02$	M $\pm .03$	H $\pm .01$
P10-5SLF	-L -D	#5	.60 (15.24)	.25 (6.35)	.19 (4.83)	.48 (12.19)	.12 (3.05)
P10-6SLF	-L -D	#6	.60 (15.24)	.25 (6.35)	.19 (4.83)	.48 (12.19)	.14 (3.56)
P10-8SLF	-L -D	#8	.66 (16.76)	.29 (7.37)	.23 (5.84)	.53 (13.46)	.16 (4.06)
P10-10SLF	-L -D	#10	.67 (17.02)	.33 (8.38)	.23 (5.84)	.53 (13.46)	.19 (4.83)
P10-14SLF	-L -D	1/4"	.76 (19.30)	.45 (11.43)	.28 (7.11)	.59 (14.99)	.25 (6.35)

NOTES:

- UL LISTED AND CSA CERTIFIED FOR:
 - #14-10 AWG SOLID OR STRANDED COPPER WIRE
 - 302° F (150° C) MAX. TEMP. RATING
- MATERIAL:
 - STAMPING - .04" (1.02) THK COPPER, TIN PLATED
- PACKAGE QTY: STD. PKG. -L = 50
BULK PKG. -D = 500
- DIMENSIONS IN BRACKETS ARE IN MILLIMETERS
- INSTALLATION TOOLS:
 - UL LISTED AND CSA CERTIFIED: CT-100, CT-200, CT-570, CT-1570
 - PANDUIT APPROVED: CT-160, CT-260
- WIRE STRIP LENGTH: 9/32 $\pm .001$ (7.1 $\pm .0$)



LISTED
587H
E52164



CERTIFIED
LR31212

A41244_05

05	4/01	KMD		ADDED PKG COLUMN TO TABLE. CHANGED STD. PKG TO -L = 50				CORP. TINLEY PARK, ILLINOIS
04	1/01	KMD	JAC	CAD FILE SPEC. WAS N41244AA_PCD_03	08938	CCH	JAC	
03	5/99	JKD	RLS	ADDED CT-1570 TOOL	07632	KS	LCA	#12-10 BARREL NON-INSULATED SHORT LOCKING FORK
02	10/94	TH	RLS	UPDATED NOTES AND DIMENSIONS	02556	KS	LCA	
REV	DATE	BY	CHK	DESCRIPTION	ECN #	PM	CUST	DRAWN BY: DAW CHK'D: RLS SCALE: NONE DRAWING NO.: A41244

X-ON Electronics

Largest Supplier of Electrical and Electronic Components

Click to view similar products for [Terminals](#) category:

Click to view products by [Panduit](#) manufacturer:

Other Similar products are found below :

[HT-13-10](#) [71M-250-32-NB](#) [01-2065-1-0216](#) [00581P0075](#) [M10-10RX](#) [M10BCK](#) [60205-1](#) [604200-1](#) [60598-1-CUT-TAPE](#) [60617-1-C](#) [60873-1](#) [M14-516R/SK](#) [M14-6RSX](#) [M18-8FBX](#) [M18-8R/LX](#) [M18BCK](#) [61314-6-C](#) [61-S](#) [61-SN-A](#) [62-NBM-A](#) [63-S](#) [640179-1](#) [640917-2-CUT-TAPE](#) [6501550002](#) [66107-2-C](#) [696683-1](#) [696834-1](#) [696861-1](#) [696931-1](#) [696999-1](#) [M8-516RK](#) [M86700006](#) [MA250DMFMX-A](#) [701-2007](#) [701-2307](#) [701-7761-03](#) [70F-110-32-PB](#) [718-N-A](#) [71M-187-20-NBL](#) [71M-250-32-NBL](#) [72F-187-20-NBL](#) [72M-250-32-NBL](#) [7310](#) [73F-250-32](#) [73F-250-32-NL](#) [F14-10C](#) [F-1M](#) [751-250](#) [76650-5002](#) [76828-149](#)