

THIS COPY IS PROVIDED ON A RESTRICTED BASIS AND IS NOT TO BE USED IN ANY WAY DETRIMENTAL TO THE INTERESTS OF PANDUIT CORP.

PANDUIT PART #	STUD SIZE		DIMENSIONS in. [mm]				
	ENGLISH	METRIC	L ± .03 [0,8]	W ± .01 [0,3]	C ± .02 [0,5]	M ± .03 [0,8]	H ± .01 [0,3]
PM2-3F*	--	M3	.63 [16,00]	.23 [5,84]	.22 [5,59]	.49 [12,45]	.13 [3,30]
P14-6F	#6	M3,5	.63 [16,00]	.28 [7,11]	.20 [5,08]	.49 [12,45]	.15 [3,81]
P14-6FN	#6	M3,5	.63 [16,00]	.24 [6,10]	.20 [5,08]	.49 [12,45]	.15 [3,81]
P14-8F	#8	M4	.69 [17,53]	.31 [7,87]	.23 [5,84]	.53 [13,46]	.17 [4,32]
P14-10F	#10	--	.71 [18,03]	.34 [8,64]	.25 [6,35]	.55 [13,97]	.20 [5,08]
P14-10FN	#10	--	.71 [18,03]	.31 [7,87]	.25 [6,35]	.55 [13,97]	.20 [5,08]
PM2-5F*	--	M5	.71 [18,03]	.34 [8,64]	.27 [6,86]	.55 [13,97]	.21 [5,33]
P14-14F	1/4"	M6	.88 [22,35]	.44 [11,18]	.33 [8,38]	.63 [16,00]	.27 [6,86]

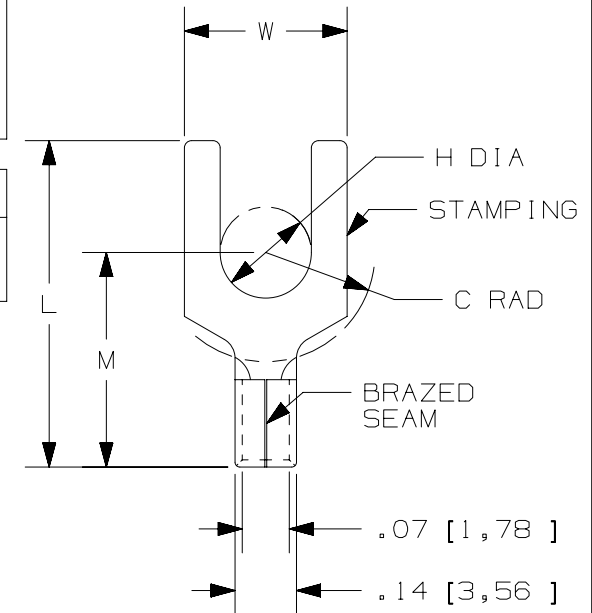
*NOT CSA CERTIFIED

NOTES:

- UL LISTED & CSA CERTIFIED FOR:
 - #18-14 AWG [1,0-2,5 mm²] SOLID OR STRANDED COPPER WIRE
 - 302°F [150°C] MAX OPERATING TEMPERATURE
 - 2000 VOLTS MAX
- SEE WWW.PANDUIT.COM FOR PACKAGE QUANTITIES
- MATERIAL:
 - STAMPING: .032" [0,8] THK COPPER, TIN PLATED
- DIMENSIONS IN BRACKETS ARE METRIC EQUIVALENT
- WIRE STRIP LENGTH: 9/32" ^{+1/32}/₋₀ [7,1mm ^{+0,8}/₋₀]

UL & CSA TOOLS
CT-100A CT-200 CT-600-A (CT-570CH) CT-1570 CT-2500 (CT-2570CH)

PANDUIT APPROVED TOOLS
CT-160 CT-260



TITLE		#18-14 BARREL NON-INSULATED FORK		
ITEM REVISION NAME		CUSTOMER DRAWING		
DATASET FILE NAME		N41255BA/11		
UNLESS OTHERWISE SPECIFIED, DIMENSIONAL TOLERANCES ARE: IN [mm]		PANDUIT ™		
DRAWN BY		DATE	CHK	SCALE
MS		-		NONE
DRAWING NUMBER:		A41255		
SHEET 1 OF 1		A		

REV	DATE	BY	CHK	APR	DESCRIPTION	ECN
11	5/17	JHNU	TMR	RGB	ADDED CSA BACK TO DRAWING, UPDATED TOOL CHART FORMAT	N41255BA-A41255
10	06/14	MBY	JHNU	RGB	REVISED NOTES, MOVED TOOLS TO TABLE, REVISED CERTIFICATION	N41255BA-A41255
09	07.20.12	BDK	LCA	VMB	ADDED PM2-3F AND PM2-5F. ADDED METRIC EQUIVALENT. CHANGED PACKAGING NOTE. REVISED INSTALLATION TOOLS NOTE. BROUGHT DRAWING TO CURRENT STANDARDS.	N41255BA-DC

D10100DA/12

X-ON Electronics

Largest Supplier of Electrical and Electronic Components

Click to view similar products for [Terminals](#) category:

Click to view products by [Panduit](#) manufacturer:

Other Similar products are found below :

[00-054007-01074-6](#) [00-054007-70206-1](#) [00-054007-70210-8](#) [00-054007-70217-7](#) [00-054007-70226-9](#) [00-054007-70228-3](#) [00-054007-70248-1](#) [00-054007-70256-6](#) [00-054007-70301-3](#) [00-054007-70316-7](#) [0-0320562-0](#) [00-054007-49560-4](#) [00-054007-70209-2](#) [00-054007-70225-2](#) [00-054007-70227-6](#) [00-054007-70231-3](#) [00-054007-70241-2](#) [00-054007-70242-9](#) [00-054007-70244-3](#) [00-054007-70246-7](#) [00-054007-70263-4](#) [00-054007-70288-7](#) [00-054007-70290-0](#) [00-054007-70300-6](#) [00-054007-70304-4](#) [01-2065-1-0216](#) [01-2900-1-04412](#) [00581P0075](#) [600TS-10](#) [60205-1](#) [604200-1](#) [605601-1](#) [60598-1-CUT-TAPE](#) [61314-6-C](#) [61810-3](#) [61-S](#) [61-SN](#) [626-0194](#) [62-NBM-A](#) [62-SN](#) [62-SP](#) [63-S](#) [640179-1](#) [M55155/059I03](#) [M55155/079C01](#) [M55155/099H02](#) [M55155/109H01](#) [M55155/109H02](#) [M55155/12XH05](#) [M55155/16XH02](#)