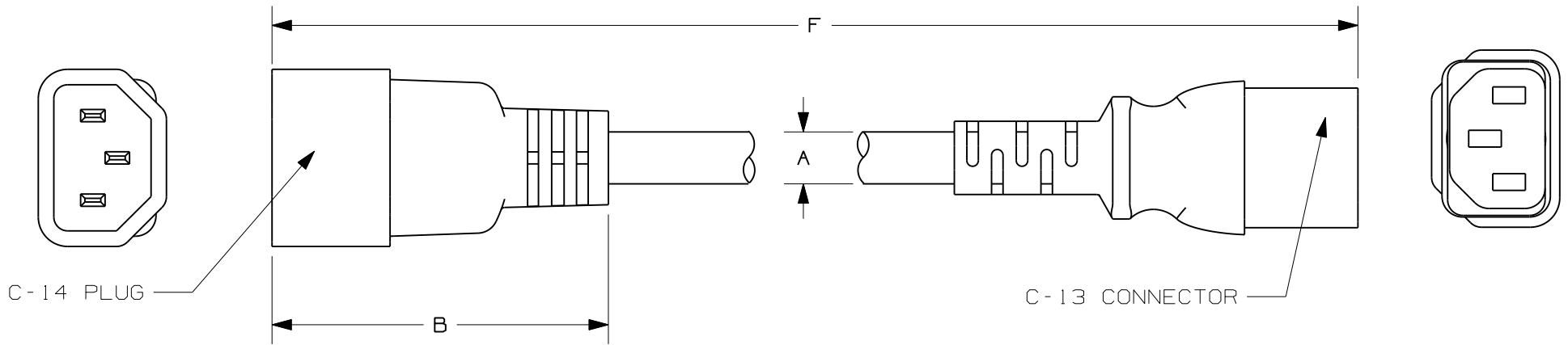


THIS COPY IS PROVIDED ON A RESTRICTED BASIS AND IS NOT TO BE USED IN ANY WAY DETRIMENTAL TO THE INTERESTS OF PANDUIT CORP.

* PANDUIT PART #	A (REF) IN (mm)	B (REF) IN (mm)	F IN (mm)	APPROXIMATE WEIGHT LBS. (g)
PC14C13BL1.5	.33 (9.14)	2.475 (62.86)	18.0 (457 mm)	.19 (88.0)
PC14C13BL2			24.0 (610 mm)	.23 (106.0)
PC14C13BL3			36.0 (914 mm)	.31 (140.0)
PC14C13BL4			48.0 (1219 mm)	.38 (174.0)

NOTES:

- *1) SEE www.panduit.com FOR PART NUMBER SUFFIX DESIGNATION FOR PACKAGE SIZE AND PART COLOR.
- 2) RATING: 10A/250V AC, 13A /125V AC.
- 3) CORD ASSEMBLY HAS THESE APPROVALS: VDE, CE, UL, CSA OR cUL.
- 4) PRODUCT IS RoHS COMPLIANT AND REACH COMPLIANT.



CAD FILENAME/LAYERS W10001DL_DC_SS-41986/01A

PANDUIT CORP. TINLEY PARK, ILLINOIS

C-13 TO C-14 POWER CORDS

UNLESS OTHERWISE SPECIFIED,
DIMENSIONAL TOLERANCES ARE:
(.X) ± 2.5" (.XXX) ±
(.XX) ± .02" ANGLES ±

UNLESS OTHERWISE SPECIFIED,
ALL DIMENSIONS ARE GIVEN
IN INCHES, THIRD ANGLE PROJECTION.

OIA	7-14-11	TMSA	DJW	ADDED PART NUMBER PC14C13BL4	SS-41986	OIA	GLZ	DRAWN BY	BWG	MAT'L:	SCALE	NTS
R	8/12/09	BWG	DWW	DRAWING RELEASED	SS-41986	00		DATE	8/12/09		DRAWING NO.	SS-41986
REV	DATE	BY	CHK	DESCRIPTION	ECN	R	CUST	SUP	CHK'D	GLZ		DWG SIZE A

X-ON Electronics

Largest Supplier of Electrical and Electronic Components

Click to view similar products for [Panduit](#) manufacturer:

Other Similar products are found below :

[CF502550F-Q](#) [PK14-8R-X](#) [PK10-56R-L](#) [PCV-110CY](#) [PSL-SCBD-EI](#) [CBX4AW-AY](#) [CBXS2AW-A](#) [CS25-18SL-CY](#) [CFPFLS2SAW](#) [PK10-10R-X](#) [PUM-925-C0](#) [SICH38-C](#) [SICH25-C](#) [CCS19-S8-X](#) [CCH57-S12-M30](#) [PCMBR-13](#) [PCPA11IW](#) [CRE32](#) [M200X042UPT](#)
[M200X050ACT](#) [M200X080FQT](#) [M200X100ACT](#) [M200X100AIT](#) [CRTW](#) [CSVBP](#) [CT-1000](#) [CT-1004](#) [CT-1104](#) [CT-2550CH](#) [CT-2570CH](#)
[M300X050ACT](#) [M300X100ACT](#) [CT-900HPH](#) [CUFB48BL](#) [CVED32VE](#) [CVED32VEPG](#) [CVED40VEN](#) [CVED40VEPG](#) [CWF400](#)
[CWMPV2340](#) [CWMPV2440](#) [CWMPV3340](#) [CWMPV3440](#) [CWST](#) [MBEH-TLR](#) [MBH-MR](#) [MBH-MR316](#) [MBH-TLR316](#) [MBSH-TR](#) [MBS-MR](#)