

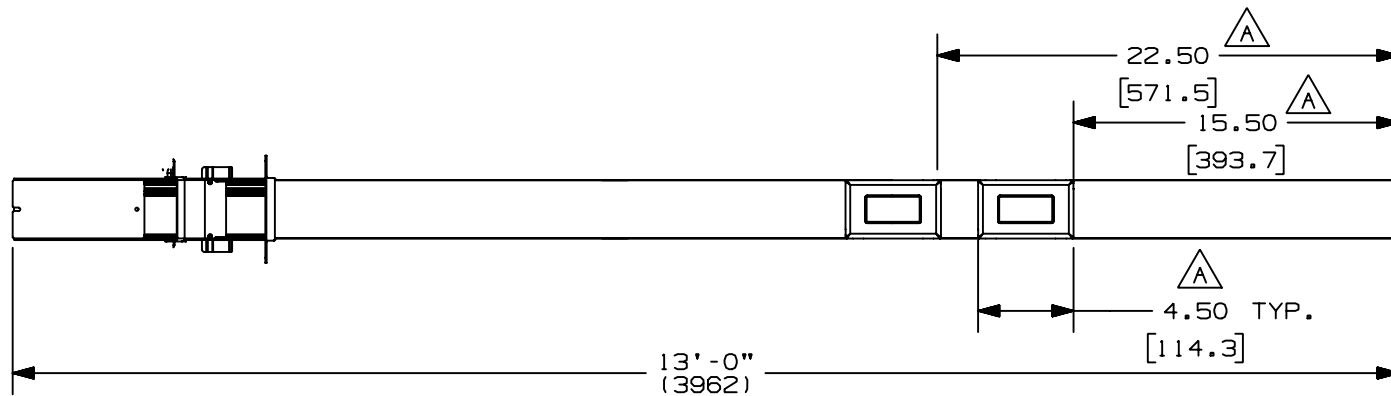
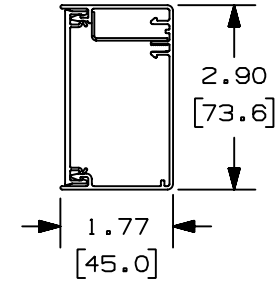
THIS COPY IS PROVIDED ON A RESTRICTED BASIS AND IS NOT TO BE USED IN ANY WAY DETRIMENTAL TO THE INTERESTS OF PANDUIT CORP.

NOTES:

1. SEE CURRENT CATALOG FOR ADDITIONAL PART SUFFIXES TO INDICATE COLOR AND OR PACKAGE QUANTITY.
2. FOLLOWING PARTS INCLUDED IN ACCESSORY KIT:
 ONE (1) BEND RADIUS CONTROL RAMP,
 TWO (2) #10-32 x 1/2 MACHINE SCREWS,
 ONE (1) END CAP,
 ONE (1) VELCRO PAD,
 ONE (1) BRACKET "T" BAR,
 ONE (1) THUMB SCREW,
 TWO (2) CEILING TRIM PLATES.
3. DIMENSIONS IN PARENTHESIS ARE IN METRIC.
4. ALL DIMENSIONS ARE REFERENCE DIMENSIONS.

PANDUIT P/N	WEIGHT
PCPA13R20	18.6 LB/EACH (8454 g/EACH)

CROSS-SECTION OF POLE



CAD FILENAME/LAYERS D37043B1_DC_PCPA13R20_00B.prt

PANDUIT CORP. TINLEY PARK, ILLINOIS
 PAN-WAY PAN-POLE (13 FT)
 (PCPA13R20)
 CUSTOMER DRAWING

UNLESS OTHERWISE SPECIFIED,
 DIMENSIONAL TOLERANCES ARE:
 (.X) ± (.XXX) ±
 (.XX) ±.03(.8) ANGLES ±

UNLESS OTHERWISE SPECIFIED,
 ALL DIMENSIONS ARE GIVEN
 IN INCHES, THIRD ANGLE PROJECTION.

REV	DATE	BY	CHK	DESCRIPTION	ECN	CHK	CUST	SUP
I	06-16-03	JBN	RMH	A. ADDED DIMENSIONS	37043-09	RGRO	RGRO	
R	12-18-00	MSO	CVV	RELEASED TO PRODUCTION	37043-09	HIW	HIW	

DRAWN BY MSO
 DATE 12-18-00
 CHECKED BY CVV

MAT'L: ALUMINUM

SCALE NONE
 DRAWING NO. 37043-09

DWG SIZE A

X-ON Electronics

Largest Supplier of Electrical and Electronic Components

Click to view similar products for [Wire Ducting](#) category:

Click to view products by [Panduit](#) manufacturer:

Other Similar products are found below :

[66200A-10](#) [CVED32VEPG](#) [CVED40VEPG](#) [F512D5-5F140Y](#) [F512D5-5F200Y](#) [F512D5-5F26Y](#) [F512D5-5F30Y](#) [F512D5-5F33Y](#) [F512D5-5F34Y](#) [F512D5-5F45Y](#) [F512D5-5F50Y](#) [F512D5-5F54Y](#) [F512D5-5F66Y](#) [F512D5-5F70Y](#) [F512D5-5F75Y](#) [F512D5-5F90Y](#) [F612D5-5F100Y](#) [F612D5-5F130Y](#) [F612D5-5F50Y](#) [F612D5-5F56Y](#) [F612D5-5F58Y](#) [F6L12D5-5F46](#) [F912D5-5F11Y](#) [F912D5-5F170Y](#) [F912D5-5F175Y](#) [F912D5-5F230Y](#) [F912D5-5F300Y](#) [F912D5-5F55Y](#) [F912D5-5F56Y](#) [F912D5-5F63Y](#) [F912D5-5F6Y](#) [F912D5-5F75Y](#) [F912D5-5F85Y](#) [F912D5-5F86Y](#) [F912D5-5F88Y](#) [F912D5-5F96Y](#) [FAP0047WBLMTP](#) [FAP12WBRDRDDLZ](#) [FAP12WDYLYLDLZ](#) [FAP12WEORORDLZ](#) [FAP6WEORORDLZ](#) [FAP6WFDBDBDLZ](#) [FAP8WEORORDLZ](#) [FCE2UWCL](#) [800A-LB](#) [802A-ECSP](#) [802I-ICSP](#) [FJQADH](#) [FJQFXT](#) [PED10](#)