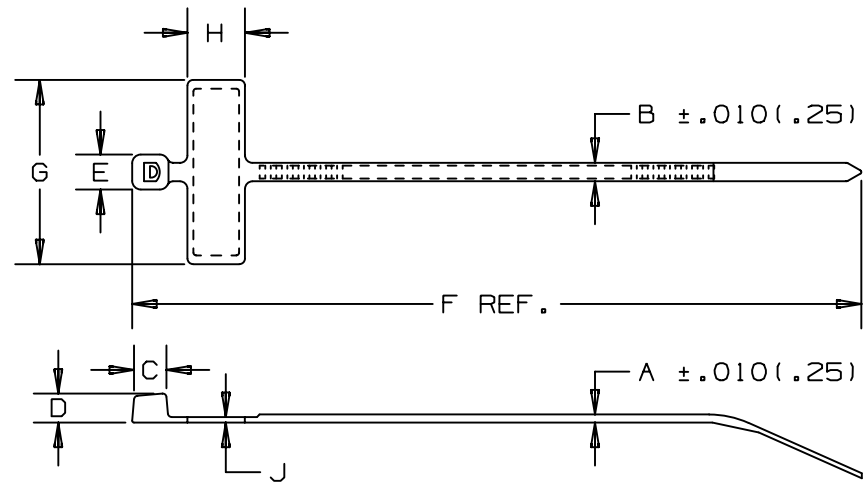


THIS COPY IS PROVIDED ON A RESTRICTED BASIS AND IS NOT TO BE USED IN ANY WAY DETRIMENTAL TO THE INTERESTS OF PANDUIT CORP.



PANDUIT * PART NO.	BUNDLE DIA.		A in (mm)	B in (mm)	C in (mm)	D in (mm)	E in (mm)	F in (mm)	G in (mm)	H in (mm)	J in (mm)	WRITE-ON AREA in (mm)	MIN. LOOP TENSILE lbs. (N)	CROSS SECTION	WEIGHT (g) lbs./100 pcs.
	MIN. in (mm)	MAX. in (mm)													
PLM1M	.18 (4.6)	.75 (19)	.035 (.9)	.098 (2.5)	.169 (4.3)	.154 (3.9)	.180 (4.6)	3.9 (99)	.98 (24.9)	.31 (7.9)	.03 (.8)	.26 x .95 (6.6 x 24.1)	18 (80)	MINIATURE	.11 (50)
PLM2M	.18 (4.6)	2.0 (51)	.035 (.9)	.098 (2.5)	.169 (4.3)	.154 (3.9)	.180 (4.6)	8.0 (203)	.98 (24.9)	.31 (7.9)	.03 (.8)	.26 x .95 (6.6 x 24.1)	18 (80)	MINIATURE	.17 (77)

NOTES:

*SEE CURRENT PRICE SHEET FOR PART NUMBER SUFFIX DESIGNATION FOR PACKAGE SIZE AND PART COLOR.
RECOGNIZED UNDER THE COMPONENT PROGRAM OF UNDERWRITERS LABORATORIES INC.

										DIMENSIONS IN PARENTHESIS ARE IN METRIC UNITS.					
										SS_5261.PRT					
										PANDUIT CORP. TINLEY PARK, ILLINOIS					
										PAN-TY [®] MARKER PLM SERIES					
										UNLESS OTHERWISE SPECIFIED, DIMENSIONAL TOLERANCES ARE: (.X) ± ---- (.XXX) ± .020(.51) (.XX) ± .02(.5) ANGLES ± ----				UNLESS OTHERWISE SPECIFIED, ALL DIMENSIONS ARE GIVEN IN INCHES, THIRD ANGLE PROJECTION.	
---	-----	---	CORRECTED MAX & MIN (mm) BUNDLE DIAMETERS				-----	---	DRAWN BY K.L		MAT'L: NYLON 6/6		SCALE NONE		
5	2/12/03	JABO	CORRECTED PLM1M WEIGHT IN (g) TO (50)				26823	5	DATE 6/9/88				DRAWING NO. SS-5261		
REV	DATE	BY	CHK	DESCRIPTION				ECN	R	CUST	SUP	CHK'D HVP		DWG SIZE A	

X-ON Electronics

Largest Supplier of Electrical and Electronic Components

Click to view similar products for [Wire Labels & Markers](#) category:

Click to view products by [Panduit](#) manufacturer:

Other Similar products are found below :

[89078GBEST](#) [89082GBESR](#) [89082GBEST](#) [PCL025-4](#) [5761-2SF](#) [58400](#) [586R734H02](#) [M1.040.0000.6](#) [CRS-CM5M](#) [CRS-M18M](#) [CS1836-000](#) [CS8626-000](#) [CU6337-000](#) [CU6342-000](#) [CU6343-000](#) [CWD01-0](#) [CWD012-0](#) [CWD012-7](#) [CWD015-3](#) [CWD015-7](#) [CWD02-0](#) [CWD02-3](#) [CWD02-4](#) [CWD02-6](#) [CWD02-8](#) [CWD02-A](#) [CWD02-D](#) [CWD02-H](#) [CWD02-K](#) [CWD02-L](#) [CWD02-M](#) [CWD02-P](#) [CWD02-Q](#) [CWD02-R](#) [CWD02-U](#) [CWD02-W](#) [CWD02-Y](#) [CWD03-+](#) [CWD03-0](#) [CWD03-P](#) [CWD06-0](#) [CWD06-8](#) [CWD06-9](#) [CWD06-L](#) [CWD06-N](#) [CWD09-0](#) [CWD09-5](#) [CWD09-7](#) [6806810001](#) [CZ2857-000](#)