



# Network Infrastructure for the Enterprise

Preferred Parts – EMEA

**PANDUIT**<sup>™</sup>

# Network Infrastructure for the Enterprise

Today's enterprise IP networks support ever-expanding converged applications for voice, data, and video, as well as functions such as intelligent lighting, security, safety systems, and more.

Panduit Enterprise Networks provide the industry's most comprehensive and holistic portfolio of products and services that enable sustainable, energy-efficient enterprises. Innovative design features provide easy installation, reduced maintenance costs, and improved network reliability and flexibility.

This catalog features the most common offering for an enterprise physical infrastructure deployment. For the complete enterprise offering, please contact your local Panduit representative or visit us at <http://www.panduit.com/en/solutions/enterprise-solutions>.

## Table of Contents

Copper Cable .....	3	Racks, Shelves and Accessories.....	8
RJ45 Patch Cords .....	3	Cable Managers.....	9
RJ45 Jack Module.....	4	Zone Enclosures .....	9
Patch Panels, Kits and Accessories .....	5	Cabinets.....	10
Faceplates .....	5 – 6	Grounding .....	10
Fiber Optic Cable.....	7	Power Distribution Unit.....	10
Fiber Connectors .....	7	Cable Ties.....	10
Fiber Patch Cords and Pigtails .....	7	Labeling .....	11
Fiber Enclosures .....	8	Security Devices .....	11
Fiber Adapter Panels.....	8	Tools.....	11



## Copper Cable



PUL5504WH-EY

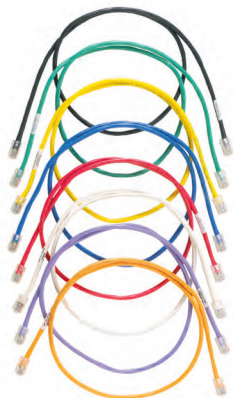


PFFL6X04WH-CED

Part Number	Description	UOM	MOQ (Reels)
<b>Unshielded</b>			
PUL5504WH-EY	Enhanced Category 5e, 4-pair, 24 AWG, UTP, LSZH, White.	M	24
PUL6004WH-EY	Enhanced Category 6, 4-pair, 23 AWG, UTP, LSZH, White.	M	18
PUL6C04BU-KE	Category 6, 4-pair, 24 AWG, UTP, LSZH, Blue.	M	30
PUL6AM04WH-CEG	Category 6A Advanced MaTriX, 4-pair, 23 AWG, UTP, LSZH, White.	M	18
PUL6ASD04WH-EG	Enhanced Category 6A, small diameter, 4-pair, 26 AWG, UTP, LSZH, White.	M	18
<b>Shielded</b>			
PFL5504WH-KG	Category 5e, shielded, 4-pair, 23 AWG, F/UTP, LSZH, White.	M	30
PFL6X04WH-CEG	Category 6A, shielded, 4-pair, 23 AWG, F/UTP, LSZH, White.	M	18
PFFL6X04WH-CED	Category 6A, shielded, 4-pair, 23 AWG, F/FTP, LSZH, White.	M	12
PUFL6X04WH-KD	Category 6A, shielded, 4-pair, 23 AWG, U/UTP, LSZH, White.	M	18
PSL7004WH-KD	Category 7, shielded, 4-pair, 23 AWG, S/FTP, LSZH, White.	M	12

Note: F/UTP means Foil around Unshielded Twisted Pairs = shielded cable.  
LSZH means Low Smoke Zero Halogen.

## RJ45 Patch Cords<sup>‡</sup>



UTP6ASD\*M\*\*



UTP6ASD\*



UTPSP\*



PCBAND\*\*-Q

Part Number	Description	Std. Pkg. Qty.	Std. Ctn. Qty.
<b>Category 6A CM*</b>			
UTP6ASD1M	Category 6A 26 AWG patch cord, CM, White, 1m.	1	10
<b>Category 6A LSZH*</b>			
UTP6ASDL1M	Category 6A (SD), patch cord, LSZH, White, 1m.	1	10
<b>Category 6 LSZH*</b>			
UTPSP1MY	Category 6, UTP, LSZH patch cord with TX6™ PLUS Modular Plugs on each end. White, 1 m.	1	10
<b>Category 6 28 AWG*</b>			
UTP28SP1M	Category 6, UTP, 28 AWG, patch cord with TX6™ Modular Plugs on each end. White, 1 m.	1	10
<b>Cat 6A UTP Zone</b>			
UZPLWH10M	Category 6A UTP, 23 AWG, zone cord LSZH, White, plug to plug, 10 m.	1	10
UZJLWH10MBL	Category 6A UTP, 23 AWG, zone cord LSZH, White, plug to black jack, 10 m.	1	10
<b>Category 6A Shielded*</b>			
STP6X1MIG	Category 6A, 10 GbE UTP, LSZH shielded patch cord with TX6A™ 10Gig™ Modular Plugs on each end. International Gray, 1m.	1	10
<b>Patch Cord Bands</b>			
PCBAND**-Q	Snaps onto individual patch cable for additional color-coding.	25	250

\*Patch cords shown in WH (White) or IG (International Gray). For BU (Blue) patch cords, add BU (Blue) to end of part number.  
Ex: UTP6ASD1MBU or STP6X3MBU.

‡Patch cords are available in 1m, 2m, 3m, or 5m (8 inch patch cord only available in UTP28SP8IN).  
For additional lengths, contact Customer Service.

**RJ45 Jack Module**



**CJ6X88TGBL**



**CJ688TGIW**



**CJS6X88TGY**

Part Number	Description	Std. Pkg. Qty.	Std. Ctn. Qty.
<b>Unshielded</b>			
<b>Category 6A</b>			
CJ6X88TGIW*	Category 6A RJ45 UTP Mini-Com™ Jack, Off White.	1	50
<b>Category 6</b>			
CJ688TGIW	Category 6 RJ45 UTP Mini-Com™ Jack, International White.	1	50
<b>Category 5e</b>			
CJ5E88TGRD	Category 5e RJ45 UTP Mini-Com™ Jack, Red.	1	50
<b>Shielded</b>			
CJS6X88TGY	Category 6A shielded RJ45 UTP Mini-Com™ Jack, Black module.	1	50
CJS688TGY	Category 6 shielded RJ45 UTP Mini-Com™ Jack, Black module.	1	50
CJS5E88TGY	Category 5e shielded RJ45 UTP Mini-Com™ Jack, Black module.	1	50
<b>Modular Plug</b>			
SP688-C	Category 6, 24 AWG UTP modular plug.	100	1000

\*RJ45 Jack Modules listed in IW (Off White). For other colors, replace IW with: BL (Black), BU (Blue), GR (Green), YL (Yellow), or RD (Red).

**Patch Panels, Kits, and Accessories**



**CP24BLY**



**CPA48BLY**



**CP48HDBL**



**CPP24FMWBL**



**CPP48HDWBL**



**CPPA48HDWBL**

Part Number	Description	Std. Pkg. Qty.	Std. Ctn. Qty.
<b>Shielded</b>			
CP24BLY	24-port all metal modular patch panel, 1 RU.	1	1
CPA24BLY	24-port angled all metal modular patch panel, 1 RU.	1	1
CP24WSBLY	24-port all metal modular patch panel with strain relief bar, 1 RU.	1	1
CP48BLY	48-port all metal modular patch panel, 2 RU.	1	1
CPA48BLY	48-port angled all metal modular patch panel, 2 RU.	1	1
CP48WSBLY	48-port all metal modular patch panel with strain relief bar, 2 RU.	1	1
CP48HDBL	48-port shielded high-density modular patch panel, 1 RU.	1	1
CPA48HDBL	48-port angled shielded high-density modular patch panel, 1 RU.	1	1
<b>Unshielded</b>			
CPP24WBL	24-port patch panel supplied with six (6) factory installed CFFP4 type front removable snap-in faceplates.	1	1
CPPL24WBL	24-port patch panel with labels supplied with six (6) factory installed CFFP4 type front removable snap-in faceplates.	1	1
CPP24FMWBL	24-port flush mount patch panel supplied with rear mounted faceplates.	1	1
CPPLA24WBL	24-port angled patch panel with labels supplied with six (6) factory installed CFFP4 type front removable snap-in faceplates.	1	1
CPPA24FMWBL	24-port angled flush mount patch panel supplied with rear mounted faceplates.	1	1
CPPL48WBL	48-port patch panel with labels supplied with twelve (12) factory installed CFFP4 type front removable snap-in faceplates.	1	1
CPP48FMWBL	48-port flush mount patch panel supplied with rear mounted faceplates.	1	1
CPPLA48WBL	48-port angled patch panel with labels supplied with twelve (12) factory installed CFFP4 type front removable snap-in faceplates.	1	1
CPPA48FMWBL	48-port angled flush mount patch panel supplied with rear mounted faceplates.	1	1
CPP48HDWBL	48-port high density patch panel supplied with rear mounted faceplates.	1	1
CPPA48HDWBL	48-port angled high density patch panel supplied with rear mounted faceplates.	1	1

## Faceplates



CFPUKS2SAWY



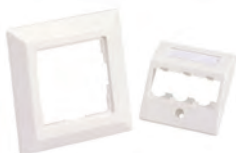
CFPUKS3AWY



CM6CSSAW-X



CM6CESSAW-X



CFPE3AWY

Part Number	Description	Std. Pkg. Qty.	Std. Ctn. Qty.
<b>UK Faceplates</b>			
CFPUKS2SAWY	86mm x 86mm single gang faceplate frame and one 1/2-size sloped shuttered module insert.	1	1
CFPUKS4SAW-2GY	86mm x 146mm double gang faceplate frame and two 1/2-sized sloped shuttered module inserts.	1	1
CFPLUKF2SAW	86mm x 86mm single gang shuttered faceplate with label and icon slots. Accepts up to two Mini-Com™ Modules. Includes two M3.5-0.5x30mm panhead mounting screws.	1	1
CFPLUKF4SAW	86mm x 86mm single gang shuttered faceplate with label and icon slots. Accepts up to four Mini-Com™ Modules. Includes two M3.5-0.5x30mm panhead mounting screws	1	1
CFPUKS2BAWY	86mm x 86mm single gang faceplate holds up to two Mini-Com™ Modules. Supplied with CMB blank module.	1	1
CFPUKS3AWY	86mm x 86mm single gang faceplate hold up to three Mini-Com™ Modules.	1	1
CFP86S2AWY	86mm x 86mm single gang sloped faceplate with screw cover. Accepts two Mini-Com™ Modules.	1	1
<b>UK Adapters</b>			
CM6CSAW-X	Shuttered module snaps into standard UK LJU6C floor box mounting plates, faceplates and patch panels. Holds one Mini-Com™ Module. Compatible with standard UK LJU6C openings with 22.3mm x 36.9mm dimensions.	10	50
CM6CSSAW-X	Sloped shuttered module snaps into standard UK LJU6C floor box mounting plates, faceplates and patch panels. Holds one Mini-Com™ Module. Compatible with standard UK LJU6C openings with 22.3mm x 36.9mm dimensions.	10	50
CM6CESAW-X	Shuttered Euro-mod adapter accepts one Mini-Com™ Module (25mm x 50mm).	10	50
CM6CESSAW-X	Sloped shuttered Euro-mod adapter accepts one Mini-Com™ Module (25mm x 50mm).	10	50
<b>German Faceplates</b>			
CFPE3AWY	80mm x 80mm faceplate frame and one 55mm x 55mm sloped faceplate accepts up to three Mini-Com™ Modules. Supplied with mounting screws, metal mounting plate, label and label cover.	1	1
CFPAGS2AWY	50mm x 50mm adapter and one 1/2-size sloped module insert accepts up to two Mini-Com™ Modules. Supplied with mounting screws and metal mounting plate.	1	1
CFPAGS2SAWY	50mm x 50mm adapter and one 1/2-size sloped shuttered module insert accepts up to two Mini-Com™ Modules. Supplied with mounting screws and metal mounting plate.	1	1
CHES3AWY	55mm x 55mm sloped faceplate holds up to three Mini-Com™ Modules. Supplied with mounting screws, metal mounting plate, label and label cover.	1	1
FCFPAW	80mm x 80mm faceplate frame accepts all Panduit 50mm x 50mm adapters and the CHES3AWY adapter.	1	1

(continued on page 6)

**Faceplates (continued)**



**CFPFF2AW**



**CFPFLS1SAW**



**CFPH4AW**



**CBTAL1WH-X**



**CFPDPS2SEW**

Part Number	Description	Std. Pkg. Qty.	Std. Ctn. Qty.
<b>French Faceplates</b>			
<b>CFPFF2AW</b>	45mm x 45mm adapter with one 1/2-size flat module insert accepts two Mini-Com™ Modules.	1	1
<b>CFPFS2AW</b>	45mm x 45mm adapter with one 1/2-size sloped module insert accepts two Mini-Com™ Modules.	1	1
<b>CFPFS2SAW</b>	45mm x 45mm adapter with one 1/2-size sloped shuttered module insert accepts up to two Mini-Com™ Modules.	1	1
<b>CFPFLS1SAW</b>	45mm x 45mm adapter with one-port sloped shuttered module with labels and icon slots. Accepts a single Mini-Com™ Module.	1	1
<b>CFPFLS2SAW</b>	45mm x 45mm adapter with two-port sloped shuttered module with labels and icon slots. Accepts up to two Mini-Com™ Modules.	1	1
<b>CFP45LS2SAW</b>	45mm x 45mm adapter with one 1/2-size sloped shuttered module insert with label and label cover. Accepts up to two Mini-Com™ Modules.	1	1
<b>French Adapter</b>			
<b>CFA1SAW-X</b>	Accepts a single Mini-Com™ Module, 22.5mm x 45mm shuttered adapter.	10	50
<b>Italian Faceplates</b>			
<b>CFPH2IW</b>	Single gang horizontal faceplate accepts two Mini-Com™ Modules.	1	1
<b>CFPHS2IW</b>	Single gang, sloped horizontal faceplate accepts two Mini-Com™ Modules.	1	1
<b>CFPH4IW</b>	Single gang horizontal faceplate accepts four Mini-Com™ Modules.	1	1
<b>CFPHSL4IW</b>	Single gang sloped horizontal faceplate accepts four Mini-Com™ Modules. Includes label and label cover.	1	1
<b>Italian Adapters</b>			
<b>CGAGY-X</b>	Adapter holds one Mini-Com™ Module in a Gewiss Playbus* Series Faceplate.	10	50
<b>CBTAL1BL-X</b>	Adapter label pocket accepts one Mini-Com™ Module for Bticino** Living International series faceplates.	10	50
<b>CBTA1BL-X</b>	Adapter accepts one Mini-Com™ Module for Bticino** Living International series faceplates.	10	50
<b>CBTAL1WH-X</b>	Adapter with label pocket accepts one Mini-Com™ Module for Bticino** Light series faceplates.	10	50
<b>CBTA1WH-X</b>	Adapter accepts one Mini-Com™ Module for Bticino** Light series faceplates.	10	50
<b>Denmark Faceplates</b>			
<b>CFPDS2SEWY</b>	Danish 77.1mm x 50.4mm faceplate with one 1/2-size sloped shuttered module insert holds up to two Mini-Com™ Modules. Supplied with label and label cover.	1	10
<b>CFPDPS2SEW</b>	Denmark faceplate with one 1/2-size sloped shuttered insert holds up to two Mini-Com™ Modules. Supplied with label and label cover.	1	10
<b>CHLKCLS2SEW</b>	Mini-Com™ Faceplate for use with LK Clic'Line^ Series faceplate snaps to LK back box. Includes one 1/2-size sloped shuttered insert that hold up to two Mini-Com™ Modules.	1	10
<b>CFD66S2SEW</b>	Mini-Com™ 2-position Sloped Shuttered OPUS 66^^ Adapter holds up to two Mini-Com™ Modules. Compatible with in-wall and surface mount installations.	1	10

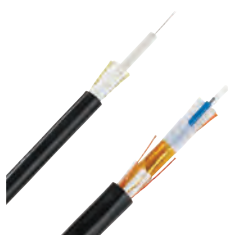
\*Playbus is a trademark of Gewiss S.p.

\*\*Living International and Light are trademarks of Bticino S.p.A.

^Clic'Line is a trademark of Schneider Electric.

^^OPUS 66 is a trademark of Schneider Electric.

## Fiber Optic Cable



FPCL\*\*\*  
FQCL\*\*\*

Part Number	Description	UOM	MOQ
<b>Indoor/Outdoor Cable</b>			
FPCL912	12-fiber OS2 singlemode LSZH indoor/outdoor cable.	M	1000
FPCL924	24-fiber OS2 singlemode LSZH indoor/outdoor cable.	M	1000
FQCLX08	8-fiber OM3 10 GbE multimode LSZH indoor/outdoor cable.	M	1000
FQCLX122	12-fiber OM3 10 GbE multimode LSZH indoor/outdoor cable.	M	1000

## Fiber Connectors



FLCSMCXAQY



FSCSCBU

Part Number	Description	Std. Pkg. Qty.	Std. Ctn. Qty.
<b>OptiCam™ Pre-Polished Connectors</b>			
FLCSMCXAQY	LC 50/125µm OM3/OM4 multimode simplex connector, Aqua boot.	1	10
FLCSMCBUY	LC 9/125µm singlemode simplex fiber optic connector for 900µm.	1	10
<b>OptiCam™ Field Polished Connectors</b>			
FSCMCXAQ	SC 50/125µm OM2/OM3/OM4 duplex connector, Aqua boot.	1	10
FSCSCBU	SC 9/125µm OS2 singlemode simplex connector, Blue boot.	1	10

## Fiber Patch Cords and Pigtails



FX2ELLNLNSNM\*\*\*



FX1BN1NNNSNM001

Part Number	Description	Std. Pkg. Qty.	Std. Ctn. Qty.
<b>Opti-Core™ Fiber Optic Patch Cords</b>			
FX2ELLNLNSNM002	2-fiber OM3 10 GbE LC duplex to LC duplex patch cord, LSZH, 1.6mm jacketed cable, 2m.	1	10
FX2ELLNLNSNM003	2-fiber OM3 10 GbE LC duplex to LC duplex patch cord, LSZH, 1.6mm jacketed cable, 3m.	1	10
F92ELLNLNSNM002	2-fiber OS2 LC duplex to LC duplex patch cord, LSZH, 1.6mm jacketed cable, 2m.	1	10
F92ELLNLNSNM003	2-fiber OS2 LC duplex to LC duplex patch cord, LSZH, 1.6mm jacketed cable, 3m.	1	10
FX23LSNSNSNM002	2-fiber OM3 10 GbE SC duplex to SC duplex patch cord, LSZH, 3mm jacketed cable, 2m.	1	10
FX23LSNSNSNM003	2-fiber OM3 10 GbE SC duplex to SC duplex patch cord, LSZH, 3mm jacketed cable, 3m.	1	10
F923LSNSNSNM002	2-fiber OS2 SC duplex to SC duplex patch cord, LSZH, 3mm jacketed cable, 2m.	1	10
F923LSNSNSNM003	2-fiber OS2 SC duplex to SC duplex patch cord, LSZH, 3mm jacketed cable, 3m.	1	10
FX2ELLNLNSNM005	2-fiber OM3 10 GbE LC duplex to LC duplex patch cord, LSZH, 1.6mm jacketed cable, 5m.	1	10
FX1BN1NNNSNM001	1-fiber OM3, 900µm buffered fiber, LC to pigtail with no jacket, 1m.	1	10
F91BN1NNNSNM001	1-fiber OS2, 900µm buffered fiber, LC to pigtail with no jacket, 1m.	1	10

Length in meters. 1, 2, 3, 5, and 10 meter lengths. Contact Panduit customer service for additional lengths.

**Fiber Enclosures**



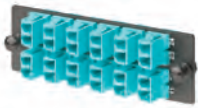
FMT1



FMT1A

Part Number	Description	Std. Pkg. Qty.	Std. Ctn. Qty.
FMT1	1 RU Rack Mount Fiber Tray.	1	1
FMT1A	1 RU Angled Rack Mount Fiber Tray.	1	1

**Fiber Adapter Panels**



FAP12WAQDLCZ

Part Number	Description	Std. Pkg. Qty.	Std. Ctn. Qty.
<b>Fiber Adapter Panels</b>			
FAP12WAQDLCZ	LC OM3/OM4 FAP with twelve LC 10 GbE duplex multimode fiber optic adapters (Aqua) with zirconia ceramic split sleeves.	1	1
FAP12WBUDLCZ	LC OS2 FAP with twelve LC duplex singlemode fiber optic adapters (Blue) with zirconia ceramic split sleeves.	1	1
FAPB	Blank FAP	1	1

**Racks, Shelves and Accessories**



R4PCN



CUFMB24BL



RM19FM1

Part Number	Description	Std. Pkg. Qty.	Std. Ctn. Qty.
<b>Racks</b>			
R2P	2 post rack, 45 RU, with threaded rails.	1	1
R4PCN	4 post rack, 45 RU with cage nut rails, 760mm deep.	1	1
<b>Rack Accessories</b>			
S1224-C	#12-24 screws.	100	1000
CNWS1224-C	#12-24 cage nut with screws.	100	1000
CNWSM6-C	M6 cage nut with screws.	100	1000
R2PPDUB	PDU mounting kit, suits 2 post rack and 4 post rack.	1	1
TLBP1S-V	Tool-less blanking panel, 1 RU, suit cage nut holes.	5	5
CPAF1BLY	Blanking panel, angled, 1 RU.	1	1
PZLRB4U	4 RU ladder rack bracket. Bracket fits Wyr-Grid® Overhead Cable Tray.	1	1
CUFMB24BL	Raised floor consolidation point enclosure, accepts Mini-Com® Modules, with removable grommet plate.	1	1
NVPDUB	PDU brackets for switch cabinet (pack of 2).	1	1
SRB19BLY	Strain relief bar, extended 2".	1	1
CMPHF1	1 RU horizontal panel d-rings, front only.	1	1
CMPHHF1	1 RU horizontal panel d-rings, high density, front only.	1	1
<b>Shelves</b>			
SRM19FM1	1 RU front mount shelf, 480mm deep.	1	1
RSHLF	1 RU front and rear mount shelf, 760mm deep.	1	1



## Cable Managers



Part Number	Description	Std. Pkg. Qty.	Std. Ctn. Qty.
<b>Vertical Managers</b>			
WMPV45E	NetRunner™ Vertical Cable Manager, front and rear, 45 RU, 4"x 5".	1	10
WMPVHC45E	NetRunner™ Vertical Cable Manager, front and rear, 45 RU, 6" x 6".	1	10
PRVF6	PatchRunner™ Vertical Cable Manager, front only 6 inch.	1	—
PRV8	PatchRunner™ Vertical Cable Manager, front and rear 8 inch.	1	—
PRV12	PatchRunner™ Vertical Cable Manager front and rear 12 inch.	1	—
<b>Doors</b>			
PRD8	PatchRunner™ 8 Inch (203mm) Dual Hinge Door for 84 inches high.	1	—
PRD12	PatchRunner™ 12 Inch (305mm) Dual Hinge Door.	1	1
<b>Horizontal Managers</b>			
WMPFSE	PatchLink™ Horizontal Cable Manager, front only, 1 RU.	1	1
WMP1E	Horizontal cable manager front and rear, 2 RU.	1	1
WMPF1E	Horizontal cable manager front only, 2 RU.	1	1
NCMHAEF2	2 RU high capacity horizontal cable manager with hinged cover, front only.	1	1
NCMHF1	1 RU horizontal cable manager with hinged cover, front only	1	1
NMF2	2 RU horizontal cable manager with hinged cover, front only.	1	1

## Zone Enclosures



Part Number	Description	Std. Pkg. Qty.	Std. Ctn. Qty.
PZAEWM3	PanZone™ Active Wall Mount Enclosure, includes mounting template for quick installation.	1	—
PZICEE	Economical passive in-ceiling zone cabling enclosure. Accepts up to 8 RU of standard 19" patch panels. Includes mounting brackets and integrated horizontal slack manager. White. 23.50"H x 23.50"W x 13.43"D (596.9mm x 596.9mm x 341.1mm).	1	—
PZLRB4U	4 RU ladder rack bracket. Bracket fits Wyr-Grid™ Overhead Cable Tray.	1	1

**Cabinets**



**N8212BC**



**S8212BA**

Part Number	Description	Std. Pkg. Qty.	Std. Ctn. Qty.
<b>N8212BC</b>	Net-Access™ N-Type Cabinet frame with top panel. Dimensions: 78.8"H x 31.5"W x 42.0"D (2000mm x 800mm x 1067mm). Color: Black.	1	1
<b>N8512BC</b>	Net-Access™ N-Type Cabinet frame with top panel. Dimensions: 84.0"H x 31.5"W x 42.0"D (2134mm x 800mm x 1067mm). Color: Black.	1	1
<b>N8822BC</b>	Net-Access™ N-Type Cabinet frame with top panel. Dimensions: 88.5"H x 31.5"W x 48.0"D (2205mm x 800mm x 1219mm). Color: Black.	1	1
<b>S8212BA</b>	Net-Access™ S-Type Cabinet frame with top panel. Dimensions: 79.8"H x 42.0"W x 42.0"D (2026mm x 800mm x 1067mm). Color: Black.	1	1
<b>S8522BA</b>	Net-Access™ S-Type Cabinet frame with top panel. Dimensions: 85.0"H x 31.5"W x 48.0"D (2160mm x 800mm x 1219mm). Color: Black.	1	1

**Grounding**



**CNBK**



**RGCBNJ660P22**

Part Number	Description	Std. Pkg. Qty.	Std. Ctn. Qty.
<b>CNBK</b>	Bonding cage nut kit.	1	—
<b>RGCBNJ660P22</b>	Jumper kits, Common Bonding Network (CBN), #6 AWG (16mm <sup>2</sup> ) jumper, 60" (1.52m) length.	1	—
<b>RGTBSG-C</b>	Green thread-forming bonding screw, #12-24 x 1/2".	100	1000

**Power Distribution Unit**



**HB0D2J0AA10M1**

Part Number	Description	Std. Pkg. Qty.	Std. Ctn. Qty.
<b>HB0D2J0AA10M1</b>	Horizontal power strip with a 16 A, 230V, 10 IEC C-13 receptacles, with C-20 power inlet, retaining clamp included. CE Marked	1	1
<b>VB0D2J0AA20M1</b>	Vertical power strip with a 16 A, 230V, 20 IEC C-13 receptacles, with C-20 power inlet. CE Marked	1	1

**Cable Ties**



**HLS**



**PLT**

Part Number	Description	Std. Pkg. Qty.	Std. Ctn. Qty.
<b>HLS-75R0</b>	Hook and loop roll, 75'L (22.9m), 0.75"W (19.1mm), Black.	1	10
<b>HLS-15R0</b>	Hook and loop roll, 15'L (4.6m), 0.75"W (19.1mm), Black.	1	10
<b>TTS-35RX0</b>	Hook and loop roll, 10 roll pack, low profile, 35'L (10.7m), 0.75"W (19.1mm), Black.	1	10
<b>PLT3I-C</b>	Cable tie, 11.4"L (290mm), Intermediate, nylon, Natural.	100	1000
<b>PLT3S-C2</b>	Cable tie, 11.5"L (292mm) Standard, nylon, Red.	100	1000
<b>PLT8LH-C0</b>	Cable tie, 27.6"L (701mm), Light-Heavy, weather resistant, Black.	100	2000
<b>PLT4S-M30</b>	Cable tie, 14.5"L (368mm), Standard, heat stabilized, Black.	1000	10000
<b>PLT3S-M2</b>	Cable tie, 11.5"L (292mm) Standard, nylon, Red.	1000	10000
<b>PLT4I-M</b>	Cable tie, 14.5"L (368mm), Intermediate, nylon, Natural.	1000	10000

## Labeling



LS8EQ-KIT



R100X150V1C

Part Number	Description	Std. Pkg. Qty.	Std. Ctn. Qty.
LS8EQ-KIT	Panduit® PanTher™ Hand-Held Label Printing System in kit. Includes LS8EQ printer with QWERTY keypad, one cassette of S100X150VAC self-laminating labels, six AA alkaline batteries, LS8E-ACS, LS8-CASE, LS8-PCKIT, LS8-IB, LS8-WS, quick reference card and operator's manual. USE FOR LABELS THAT MUST BE PRINTED ON THE JOB SITE.	1	1
UILS8BW	Ultimate ID™ Label Cassette.	1	10
C252X030FJC	Modular patch panel (CP) adhesive label cassette.	1	10
S100X150VAC	P1 cassette, self-laminating label, vinyl, 1.00" W x 1.50" H, 0.50" POA, Clear/White.	1	10
R100X150V1C	Turn-Tell™ Patch Cord Label Cassette.	1	10

## Security Devices



PSL-LCAB-AQ



FLCCLIW-X



PSL-DCJB



PSL-DCPLRX

Part Number	Description	Std. Pkg. Qty.	Std. Ctn. Qty.
PSL-LCAB-AQ	LC duplex adapter blockout device, ten devices (Blue) and one removal tool (Aqua).	1	20
PSL-LCAB-BU	LC duplex adapter blockout device, ten devices (Blue) and one removal tool (Black).	1	20
FLCCLIW-X	LC patch plug lock-in device, ten devices and one removal tool.	10	100
PSL-DCJB-BL	Jack module blockout device, ten block-outs (Black) and one removal tool (Black).	1	20
PSL-DCJB-BU	Jack module blockout device, ten block-outs (Blue) and one removal tool (Black).	1	20
PSL-DCJB	Jack module blockout device, ten block-outs (Red) and one removal tool (Black).	1	20
PSL-DCPLRX-BL	Recessed RJ45 plug lock-in device, ten devices (Black) and one installation/removal tool (Black).	1	20
PSL-DCPLRX-BU	Recessed RJ45 plug lock-in device, ten devices (Blue) and one installation/removal tool (Black).	1	20
PSL-DCPLRX	Recessed RJ45 plug lock-in device, ten devices (Red) and one installation/removal tool (Black).	1	20

## Tools



EGJT



TGJT



FCAMKIT

Part Number	Description	Std. Pkg. Qty.	Std. Ctn. Qty.
EGJT	TG jack termination tool.	1	—
TGJT	TG jack termination tool, for high-volume installations.	1	—
CJAST	Copper cable jacket stripper.	1	1
CWST	Copper wire snips.	1	1
PDT110	110 punchdown tool.	1	1
CBOT24K	Cable bundle organizing tool.	1	10
FIELDKIT	Field polish fiber optic termination kit for all field polish connectors.	1	—
FCAMKIT	OptiCam™ Termination Kit for pre-polished connectors.	1	1
MPT5-8AS	Crimp tool for TX6™ PLUS and Pan-Plug™ Modular Plugs.	1	1



**PANDUIT™**

Panduit CBC London  
6 Broad Street Place  
London  
EC2M 7JH  
UK

phone +44 (0) 208 601 7200

[EMEA-CustomerServices@panduit.com](mailto:EMEA-CustomerServices@panduit.com)

[www.panduit.com](http://www.panduit.com)

## X-ON Electronics

Largest Supplier of Electrical and Electronic Components

*Click to view similar products for [Cable Ties](#) category:*

*Click to view products by [Panduit](#) manufacturer:*

Other Similar products are found below :

[65037-C](#) [770-1751-10](#) [REL50L0C2](#) [20093-0](#) [SF600-120X](#) [SJ3518FR-1x50](#) [SJ3526N-Beige-2"x50yd](#) [SJ3526N BLACK 58" X 50YD](#) [SJ3571](#)  
[SJ-3571-1"x50yd-Black](#) [PLT2S-C4](#) [34-455-C](#) [3722](#) [561-B110120](#) [561-N3510](#) [TYZ528M](#) [34-463-C](#) [URT20S-M](#) [06226](#) [08350-0](#) [08600-0](#)  
[08376-0](#) [10037-0](#) [10325-0](#) [10362-0](#) [10606-0](#) [1122-4JW8](#) [561-EZ250](#) [561-EZ625](#) [SJ3527N-Beige-2"x50yd](#) [SJ3527N-LOOP-BLACK-1](#)  
[SJ3572-2"x50yd-Black](#) [CF5625-000](#) [65004-C](#) [65005-C](#) [65007-C](#) [65036-C](#) [157-00039](#) [770-1708](#) [770-1753-10](#) [770-1752](#) [SPNY-041-9](#)  
[SF400-120X](#) [3719](#) [08582-0](#) [08386-0](#) [10431-0](#) [08359-0](#) [10620-0](#) [10345-0](#)