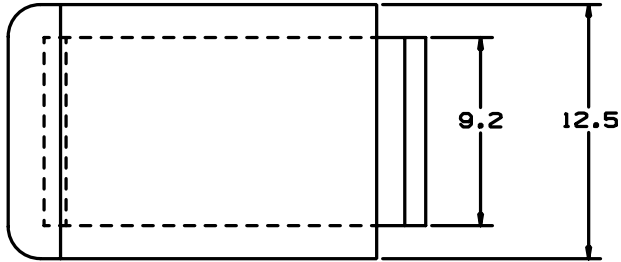
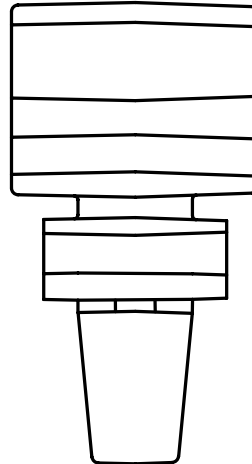
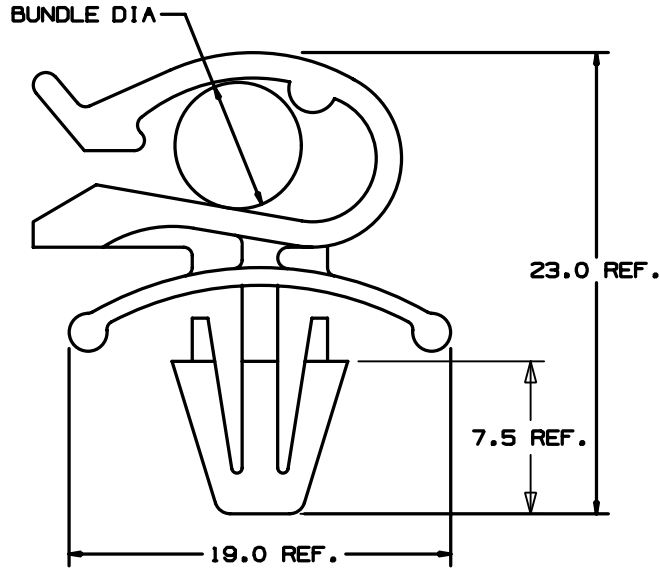


THIS COPY IS PROVIDED ON A RESTRICTED BASIS AND IS NOT TO BE USED IN ANY WAY DETRIMENTAL TO THE INTERESTS OF PANDUIT CORP.



PANDUIT PART NUMBER	RECOMMENDED BUNDLE DIA RANGE (mm)	PANEL DIMENSIONS		WEIGHT g/100 pcs.
		THICKNESS (mm)	HOLE SIZE (mm)	
PMCC09H06	6.0 - 9.0	1.0 - 3.0	6.3 - 6.5	125



NOTES:

- SEE CURRENT PRICE SHEET FOR PART NUMBER SUFFIX DESIGNATION FOR PACKAGE SIZE.

DIMENSIONS ARE METRIC (mm)

CAD FILENAME/LAYER G00239LD\_PB\_PMCC09H06\_02

**PANDUIT** CORP. TINLEY PARK, ILLINOIS

PMCC09H06  
PUSH MOUNT CORD CLIP

UNLESS OTHERWISE SPECIFIED,  
DIMENSIONAL TOLERANCES ARE:  
(.X) ±0.5 ANGLES ±5°

UNLESS OTHERWISE SPECIFIED,  
ALL DIMENSIONS ARE GIVEN  
IN INCHES, THIRD ANGLE PROJECTION.

REV	DATE	BY	CHK	DESCRIPTION	ECN	R	CUST	SUP	Q.C.
2	4-14-05	TMSA		ADDED BARB HEIGHT DIMENSION 7.5 REF	G80239LD	2			
1	12/27/04	MJK		CONVERT TO METRIC DWG AND DIM REVISIONS	G80239LD	1			
R	5/21/04	JAD		INITIAL RELEASE	G80239LD	R			

DRAWN BY JAD

DATE 5/21/04

CHK'D

MAT'L:  
HEAT STABILIZED  
NYLON 6/6  
COLOR: BLACK

SCALE NONE

DRAWING NO. G80239LD

DWG SIZE A

## X-ON Electronics

Largest Supplier of Electrical and Electronic Components

*Click to view similar products for [Cable Mounting & Accessories](#) category:*

*Click to view products by [Panduit](#) manufacturer:*

Other Similar products are found below :

[582603-1](#) [009333-000](#) [727844N003](#) [747](#) [809090N001](#) [843188-000](#) [8666](#) [967279N002](#) [DB-11](#) [1300840039](#) [1300900096](#) [1301800416](#)  
[1302264450](#) [1300830184](#) [1300830729](#) [1300900039](#) [1301580036](#) [1301850553](#) [1301860939](#) [1302000074](#) [1302261315](#) [1302264431](#)  
[1337706-2](#) [APA18-AK](#) [1724](#) [1-787307-1](#) [185491N001](#) [1868](#) [HP-6N](#) [C-202-C](#) [202C221-13-0](#) [CA7308-000](#) [8S23-75FR-CS8184](#) [2684](#) [9648](#)  
[3089](#) [988382-000](#) [A72821-000](#) [AA401](#) [173506-000](#) [1823](#) [202C292-13-0](#) [202C302-13-0](#) [2109](#) [300625](#) [3330](#) [3412](#) [356247-1](#) [M9142](#)  
[M9143](#)