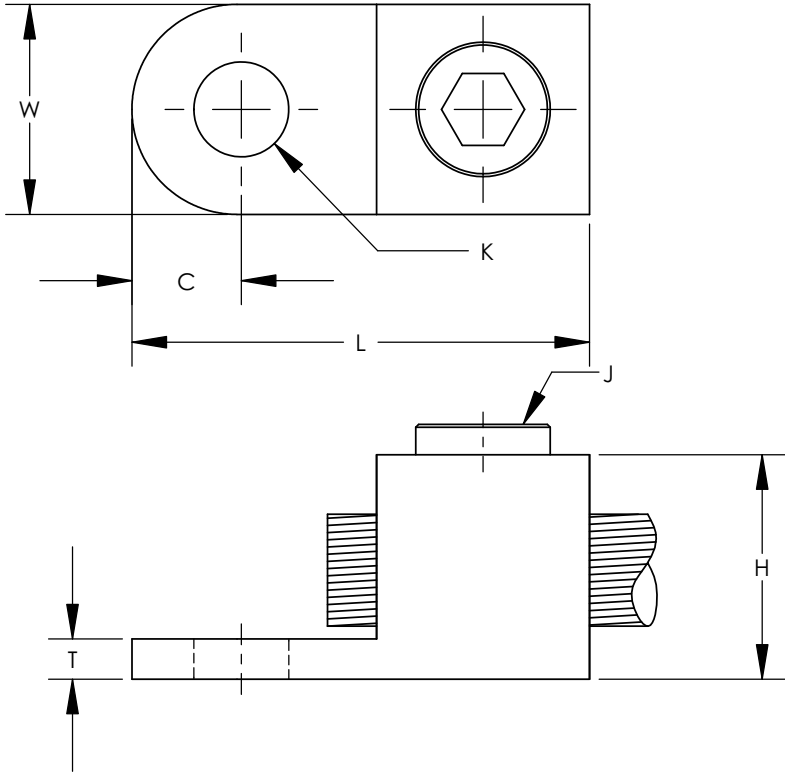


THIS COPY IS PROVIDED ON A RESTRICTED BASIS AND IS NOT TO BE USED IN ANY WAY DETRIMENTAL TO THE INTERESTS OF PANDUIT CORP.



NOTES:

1. UL LISTED AND CSA CERTIFIED
2. FOR COPPER WIRE ONLY.
3. DIMENSIONS ARE INCHES. DIMENSIONS IN PARENTHESIS ARE MILLIMETERS.
4. IF HEX KEY IS NOT GIVEN, FLAT HEAD SCREW IS USED.



PANDUIT PART NUMBER	CONDUCTOR RANGE	WIRE DIAMETER RANGE - IN	APPROXIMATE DIMENSIONS - IN [mm]							WRENCH SIZE	TORQUE VALUE
			C	K	H	L	T	W	J		
PNL-4-C	14 SOL - 4 STR	.064-.232	.27 [7]	.27 [7]	.56 [14]	1.25 [32]	.14 [3.57]	.53 [13]	5/16-24	SLOTTED SCREWDRIVER	45
PNL1/0-L	8 SOL - 1/0 STR	.128-.375	.38 [10]	.33 [8]	.78 [20]	1.59 [40]	.14 [3.57]	.73 [16]	1/2-20	1/4"	200
PNL-250-Q	6 SOL - 250 kcmil	.162-.575	.44 [11]	.39 [10]	1.05 [27]	1.97 [50]	.13 [3.17]	.94 [24]	5/8-18	5/16"	275
PNL-500-3	4 SOL - 500 kcmil	.204-.815	.75 [19]	.53 [13]	1.47 [43]	3.00 [76]	.25 [6.35]	1.38 [35]	15/16-16	3/8"	375
PNL-1000-3	500 kcmil - 1000 kcmil	.815-1.153	.69 [17]	.56 [14]	2.00 [51]	3.88 [99]	.38 [9.52]	1.75 [44]	1-3/8-14	1/2"	500

REV	DATE	BY	CHK	DESCRIPTION	ECN
03	9/09	JHNU	JHNU	REMOVED PNL8-C FROM DRAWING CONVERTED DRAWING TO SOLIDWORKS	
02	11/02	CJW		ADDED NEW UL & CSA SYMBOLS, CHANGED MCM TO kcmil CHANGED CATALOG NUMBER TO PANDUIT PART NUMBER	
01	3/01	RM		FILESPEC WAS N41174CA_PCD_00	
00	10/96	TM		DWG. RELEASED	

PANDUIT CORP. TINLEY PARK, ILLINOIS

**CONE SCREW LUG CONNECTOR
CUSTOMER DRAWING**

SCALE N/A DRAWING NO / CAD FILE C41174_03

X-ON Electronics

Largest Supplier of Electrical and Electronic Components

Click to view similar products for [Terminals](#) category:

Click to view products by [Panduit](#) manufacturer:

Other Similar products are found below :

[00-054007-01074-6](#) [00-054007-70206-1](#) [00-054007-70210-8](#) [00-054007-70217-7](#) [00-054007-70226-9](#) [00-054007-70228-3](#) [00-054007-70248-1](#) [00-054007-70256-6](#) [00-054007-70301-3](#) [00-054007-70316-7](#) [0-0320562-0](#) [00-054007-49560-4](#) [00-054007-70209-2](#) [00-054007-70225-2](#) [00-054007-70227-6](#) [00-054007-70231-3](#) [00-054007-70241-2](#) [00-054007-70242-9](#) [00-054007-70244-3](#) [00-054007-70246-7](#) [00-054007-70263-4](#) [00-054007-70288-7](#) [00-054007-70290-0](#) [00-054007-70300-6](#) [00-054007-70304-4](#) [01-2065-1-0216](#) [01-2900-1-04412](#) [00581P0075](#) [600TS-10](#) [60205-1](#) [604200-1](#) [605601-1](#) [60598-1-CUT-TAPE](#) [61314-6-C](#) [61810-3](#) [61-S](#) [61-SN](#) [626-0194](#) [62-NBM-A](#) [62-SN](#) [62-SP](#) [63-S](#) [640179-1](#) [M55155/059I03](#) [M55155/079C01](#) [M55155/099H02](#) [M55155/109H01](#) [M55155/109H02](#) [M55155/12XH05](#) [M55155/16XH02](#)