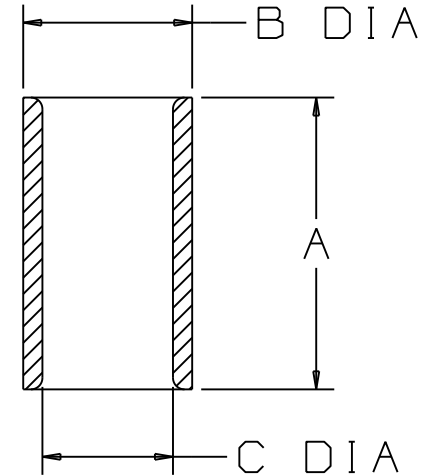


PANDUIT PART NUMBER	WIRE COMBINATION (COMBINATION OF ANY TWO)	DIMENSIONS in.		
		A $\pm .03$	B $\pm .01$	C $\pm .01$
PS18	#22 TO #18	.29 (7.4)	.13 (3.3)	.10 (2.5)
PS16	#20 TO #16	.29 (7.4)	.16 (4.1)	.12 (3.0)
PS12	#14 TO #12	.38 (9.7)	.22 (5.6)	.17 (4.3)

NOTES:

- UL LISTED AND CSA CERTIFIED FOR:
A. SOLID OR STRANDED COPPER WIRE
- MATERIAL: BRASS, TIN PLATED
- SEE www.panduit.com FOR PART NUMBER SUFFIX DESIGNATION FOR PACKAGE SIZE.
- DIMENSIONS IN BRACKETS ARE IN MILLIMETERS
- INSTALLATION TOOLS:
A. UL LISTED AND CSA CERTIFIED: CT-100, CT-200
B. PANDUIT APPROVED: CT-260
- WIRE STRIP LENGTH: $5/16^{+1/32}_{-0}$ (7.9 $^{+.8}_{-0}$)
 $7/16^{+1/32}_{-0}$ (11.1 $^{+.8}_{-0}$) FOR PS12



LISTED
587H
E52164



CERTIFIED
LR31212

REV	DATE	BY	CHK	DESCRIPTION	ECN #	CUST	PM
06	5/11	SB		Added Note #3			

PANDUIT

CORP.

TINLEY PARK, ILLINOIS

NON-INSULATED PARALLEL SPLICE

DRAWN BY: DRL CHK'D: SCALE: NONE DRAWING NO.: A41339

X-ON Electronics

Largest Supplier of Electrical and Electronic Components

Click to view similar products for [Terminals](#) category:

Click to view products by [Panduit](#) manufacturer:

Other Similar products are found below :

[00-054007-01074-6](#) [00-054007-70206-1](#) [00-054007-70210-8](#) [00-054007-70217-7](#) [00-054007-70226-9](#) [00-054007-70228-3](#) [00-054007-70248-1](#) [00-054007-70256-6](#) [00-054007-70301-3](#) [00-054007-70316-7](#) [0-0320562-0](#) [00-054007-49560-4](#) [00-054007-70209-2](#) [00-054007-70225-2](#) [00-054007-70227-6](#) [00-054007-70231-3](#) [00-054007-70241-2](#) [00-054007-70242-9](#) [00-054007-70244-3](#) [00-054007-70246-7](#) [00-054007-70263-4](#) [00-054007-70288-7](#) [00-054007-70290-0](#) [00-054007-70300-6](#) [00-054007-70304-4](#) [01-2065-1-0216](#) [01-2900-1-04412](#) [00581P0075](#) [600TS-10](#) [60205-1](#) [604200-1](#) [605601-1](#) [60598-1-CUT-TAPE](#) [61314-6-C](#) [61810-3](#) [61-S](#) [61-SN](#) [626-0194](#) [62-NBM-A](#) [62-SN](#) [62-SP](#) [63-S](#) [640179-1](#) [M55155/059I03](#) [M55155/079C01](#) [M55155/099H02](#) [M55155/109H01](#) [M55155/109H02](#) [M55155/12XH05](#) [M55155/16XH02](#)