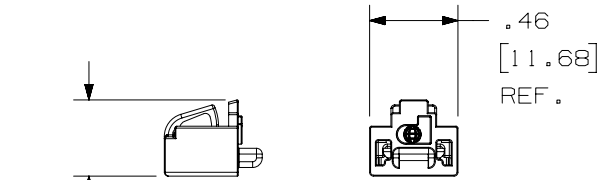
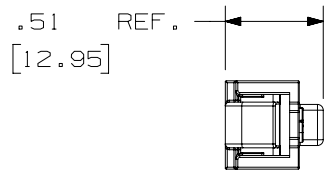


THIS COPY IS PROVIDED ON A RESTRICTED BASIS AND IS NOT TO BE USED IN ANY WAY DETRIMENTAL TO THE INTERESTS OF PANDUIT CORP.

NOTES:

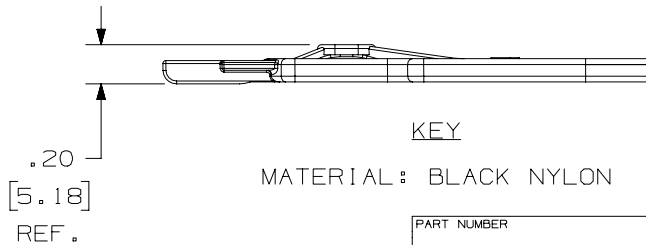
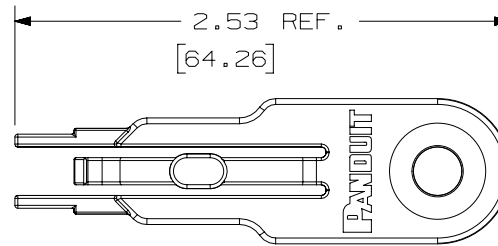
1. DIMENSION IN [] ARE IN MILLIMETERS.

PART NUMBER	BLOCKOUT COLOR	BLOCKOUT/ PKG.	KEY/ PKG.	CTN QTY.
PSL-DCJB	RED	10	1	20
PSL-DCJB-C	RED	100	5	10
PSL-DCJB-BL	BLACK	10	1	20
PSL-DCJB-BL-C	BLACK	100	5	10
PSL-DCJB-BU	BLUE	10	1	20
PSL-DCJB-BU-C	BLUE	100	5	10
PSL-DCJB-IW	INTERNATIONAL WHITE	10	1	20
PSL-DCJB-IW-C	INTERNATIONAL WHITE	100	5	10
PSL-DCJB-YL	YELLOW	10	1	20
PSL-DCJB-YL-C	YELLOW	100	5	10
PSL-DCJB-GR	GREEN	10	1	20
PSL-DCJB-GR-C	GREEN	100	5	10
PSL-DCJB-OR	ORANGE	10	1	20
PSL-DCJB-OR-C	ORANGE	100	5	10
PSL-DCJB-IG	INTERNATIONAL GRAY	10	1	20
PSL-DCJB-IG-C	INTERNATIONAL GRAY	100	5	10



.40 REF. [10.08] MATERIAL: POLYCARBONATE (SEE TABLE FOR COLOR)

BLOCKOUT



KEY

MATERIAL: BLACK NYLON

PART NUMBER		PSL-DCJB-*		
TITLE				
JACK MODULE BLOCKOUT				
CUSTOMER DRAWING				
ITEM REVISION NAME		100619CP/04		
DATASET FILE NAME		100619CP_DC-C10380/04A		
UNLESS OTHERWISE SPECIFIED, DIMENSIONAL TOLERANCES ARE: IN [mm]				MATERIAL: SEE DRAWING
.x ± .1 [2.54]		.xxx ± .005 [0.127]		
.xx ± .01 [0.25]		ANGLES ± 5°		DRAWING NUMBER: C10380
THIRD ANGLE PROJECTION		THIRD ANGLE PROJECTION		
DRAWN BY	DATE	CHK	SCALE	SIZE
RVU	9-15-05	DWY	NONE	A

REV	DATE	BY	CHK	APR	DESCRIPTION	ECN
5	2-28-17	BJN	JAV	AMY	UPDATED REVISED & REDRAWN PREVIOUS REVS REMOVED FOR CLARITY	C10380

D10100DA/14

X-ON Electronics

Largest Supplier of Electrical and Electronic Components

Click to view similar products for [Modular Connectors / Ethernet Connectors](#) category:

Click to view products by [Panduit](#) manufacturer:

Other Similar products are found below :

[8949-H88/06BLKA/SN](#) [74441-0010/BKN](#) [MP1010RX-1000](#) [MP44RX-1000](#) [PHP-6P6C-5](#) [GAX-3-66](#) [GAX-8-62](#) [GDCX-PA-66-50](#) [GDCX-PN-64](#) [GDCX-PN-66](#) [GDCX-PN-66-50](#) [GDLX-A-66](#) [GDLX-N-66](#) [GDLX-S-66](#) [GDLX-S-88K](#) [GDTX-S-88-50](#) [GDX-PA-1010](#) [GLX-N-1010M-BLK](#) [GLX-S-88M-BLK](#) [GMX-N-1010](#) [GMX-S-1010](#) [GMX-S-66](#) [GMX-SMT4-N-88](#) [GPX-2-64](#) [GSGX-N-2-88](#) [GSGX-N-4-88](#) [GSX-NS2-88-3.05](#) [GSX-NS2-88-3.05-50](#) [GSX-NS-88-3.05-50](#) [PT-108A-8C-UL](#) [PT-J951-8C](#) [PTS-J531-8CS-50UL](#) [1-1775629-2](#) [A-2014-0-4](#) [GWLX-S-88-GR](#) [GWLX-S9-88-YG](#) [DC-1021-8-WH-6](#) [1300530003](#) [1324640-4](#) [RJ11FTVC2G](#) [RJ11FTVC2N](#) [RJFTVX2SA1G](#) [132764-001](#) [1413235](#) [MP88X-1000](#) [MPS88RX-5000](#) [E5288-S000K3-L](#) [E5908-15A242-L](#) [155302-001](#) [AX100653](#)