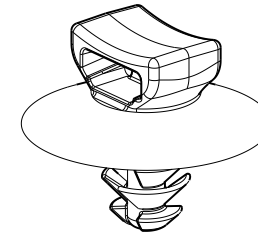
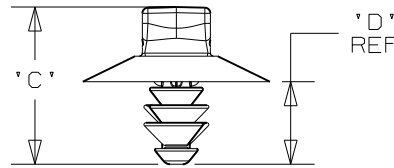
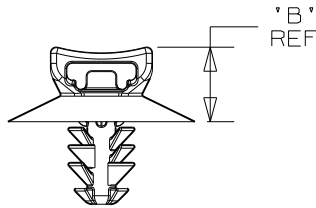
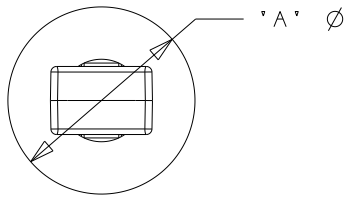


PANDUIT PART NUMBER	USED WITH CABLE TIES	DIMENSIONS				WEIGHT grams/100pcs
		'A'	'B' (REF)	'C'	'D' (REF)	
PUM-049- <u>  </u>	M, I, S	16.5	6.6	13.8	7.2	33 g



SCALE 2:1

NOTES:

1. SEE WWW.PANDUIT.COM FOR PART NUMBER SUFFIX DESIGNATION FOR PACKAGE SIZE, MATERIAL AND COLOR.
2. (\*) DIMENSIONAL VARIANCE IS POSSIBLE DUE TO MOLDING PROCESS RELATED SINK MARKS.
3. APPLICATION SPECIFICATION:  
 HOLE DIAMETER: 4.6 - 4.9 mm  
 PANEL THICKNESS: 0.7 - 3.0 mm

CAD FILENAME/LAYERS 10B015CV/01\_DC\_GB0239ML\_REV06



TINLEY PARK, ILLINOIS

PUM-049  
PUSH UMBRELLA MOUNT 049

UNLESS OTHERWISE SPECIFIED, ALL DIMENSIONS ARE METRIC TOLERANCE: ±0.5MM

DRAWN BY TMSA

MAT'L:

SCALE 1:1 UNLESS NOTED

DATE 8-11-06

NYLON 6/6

DRAWING NO.

GB0239ML

DWG SIZE A

CHK'D

REV	DATE	BY	CHK	DESCRIPTION	ECN	R	CUST	SUP
6	3/08/11	BWG	MPH	CHANGED MATERIAL NOTE. REMOVED MATERIAL BOX FROM CHART.	GB0239ML	6	PBC	

## X-ON Electronics

Largest Supplier of Electrical and Electronic Components

*Click to view similar products for [Cable Tie Mounts](#) category:*

*Click to view products by [Panduit](#) manufacturer:*

Other Similar products are found below :

[3-350087-0](#) [CTB75X75BKA-C](#) [561-EZAB580T](#) [561-EZS375B40](#) [561-TA250125](#) [08443-0](#) [10035-0](#) [561-TA00600](#) [1689174-1](#) [08445-0](#)  
[10351-0](#) [561-TA250125B](#) [20015-0](#) [10350-0](#) [10029-0](#) [08484-0](#) [08446-0](#) [08318-0](#) [PAM075NY-A-C](#) [MTH1-3](#) [10044](#) [151-01802](#) [151-11319](#)  
[151-11819](#) [PLWP1SB-D](#) [PLWP1M-C](#) [PLWP2SA-D](#) [PLWP2SB-D](#) [PLWP2S-C](#) [PLWP1S-D](#) [PLWP1M-D](#) [TA1S8-C](#) [ABM3H-A-L](#) [ABM3H-](#)  
[AT-T0](#) [EMS-A-C0](#) [EMSK3-1-3-0](#) [10079](#) [151-10930](#) [151-10920](#) [3590](#) [151-28320](#) [151-28349](#) [151-28530](#) [151-10914](#) [151-10904](#) [151-10915](#)  
[151-10916](#) [151-10906](#) [115-06960](#) [06297](#)