

## Fir Tree Push Mounts and Assemblies

*PANDUIT* push mounts with umbrellas and push mount assemblies are a reliable and cost effective solution for securing wire harnesses in the automotive, marine, white goods, heavy equipment and mass transit-rail markets. Designed for 0.18 inches to 0.40 inches through holes and variable panel thicknesses, the push mounts insert easily and exceed manufacturers' requirements for primary anchors of wire harnesses. The *PANDUIT* push mounts with umbrellas are compatible with all standard PAN-TY® Cable Ties up to the standard 50 pound loop tensile ties. The PUM-925-M30 mount has expanded slot capability which allows the use of the 120 pound loop tensile Light-Heavy cable ties. Heavy Duty Fir Tree Mounts (PUME925) allow the use of Wide Strap Cable Ties.



<b>Key Features</b>	<b>Benefits</b>
<b>Unique alternating barb design</b>	Provides increased retention and lower insertion force, reducing operator fatigue and improving productivity
<b>Umbrella fir tree design</b>	Locks securely into position and can be rotated 360 degrees, giving you a wider application range than fixed barb designs; also seals against dust and moisture
<b>Exclusive contoured anvil head</b>	Firmly retains a minimum wire gauge of 12 AWG (2mm Ø) within ± 10mm (.394") of the initial installation point, providing a low profile design
<b>Assemblies with PLT cable ties</b>	Provide routing and anchoring for wire harnesses, significantly reducing harness assembly time
<b>Robust Material</b>	Heavy Duty Fir Tree Mounts (PUME925) utilize impact modified heat stabilized weather resistant Nylon 6.6 material

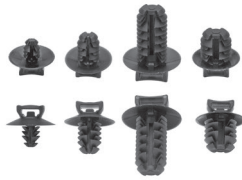


PUM Fir Tree Mount  
with PLT2S Standard Cable Tie



PUME Heavy Duty Fir Tree Mount  
with PLWS Wide Strap Cable Tie

# Fir Tree Push Mounts and Assemblies



(L-R) PUM-049-M30, PUM-071-M30,  
PUM-925-M30, PUM-100-M30

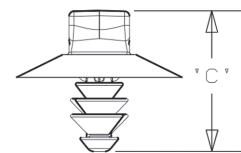
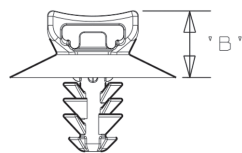
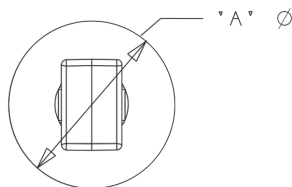


PUME925-D350

## Fir Tree Push Mounts

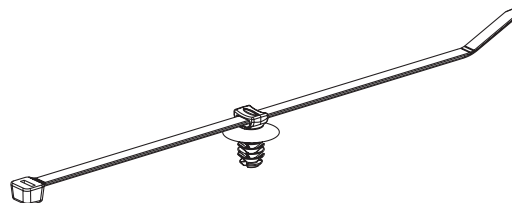
Part Number	Used with Cable Ties‡	Head Diameter (A)		Panel to Top of Mount (B)		Overall Height (C)		Panel Hole Diameter Range		Panel Thickness Range		Std. Pkg. Qty.	Std. Ctn. Qty.
		In.	mm	In.	mm	In.	mm	In.	mm	In.	mm		
PUM-049-M30	M, I, S	0.67	17.0	0.26	6.6	0.54	13.8	0.18 – 0.19	4.6 – 4.9	0.03 – 0.19	0.7 – 3.0	1000	5000
PUM-071-M30	M, I, S	0.67	17.0	0.26	6.5	0.67	16.9	0.25 – 0.28	6.3 – 7.1	0.03 – 0.28	0.8 – 7.0	1000	5000
PUM-100-M30	M, I, S	0.64	16.0	0.26	6.5	0.67	16.9	0.35 – 0.40	9.0 – 10.0	0.03 – 0.28	0.8 – 7.0	1000	5000
PUM-925-M30	M, I, S, LH	0.77	20.0	0.30	7.6	1.05	26.7	0.34 – 0.36	8.8 – 9.3	0.04 – 0.62	1.0 – 16.0	1000	5000
PUME925-D350	M, I, S, LH, H, EH	1.18	30.0	0.275	7.0	1.10	28.0	0.34 – 0.36	8.8 – 9.3	0.04 – 0.62	1.0 – 16.0	500	5000

‡Cable Tie Cross Section: M = Miniature, I = Intermediate, S = Standard, LH = Light-Heavy, H = Heavy, and EH = Extra Heavy



## Fir Tree Push Mount Assemblies

Part Number	Head Diameter (A)		Panel to Top of Mount (B)		Overall Height (C)		Panel Hole Diameter Range		Panel Thickness Range		Max. Bundle Diameter		Std. Pkg. Qty.	Std. Ctn. Qty.
	In.	mm	In.	mm	In.	mm	In.	mm	In.	mm	In.	mm		
PUM-049-2S-D30	0.67	17.0	0.26	6.6	0.54	13.8	0.18 – 0.19	4.6 – 4.9	0.03 – 0.19	0.7 – 3.0	1.88	48.0	500	5000
PUM-071-2S-D30	0.67	17.0	0.26	6.6	0.67	16.9	0.25 – 0.28	6.3 – 7.1	0.03 – 0.28	0.8 – 7.0			500	5000
PUM-100-2S-D30	0.64	16.0	0.26	6.6	0.67	16.9	0.35 – 0.40	9.0 – 10.0	0.03 – 0.28	0.8 – 7.0			500	5000
PUM-925-3H-T30	0.77	20.0	0.30	7.6	1.05	26.7	0.34 – 0.36	8.8 – 9.3	0.04 – 0.62	1.0 – 16.0	3.00	76.0	200	1000
PUM-071-B2S-D30	0.67	17.0	0.26	6.6	0.67	16.9	0.25 – 0.28	6.3 – 7.1	0.03 – 0.28	0.8 – 7.0	2.00	51.0	500	5000
PUME925-3E-C350	1.18	30.0	0.275	7.0	1.10	28.0	0.34 – 0.36	8.8 – 9.3	0.04 – 0.62	1.0 – 16.0	3.25	82.6	100	1000
PUME925-4E-C350	1.18	30.0	0.275	7.0	1.10	28.0	0.34 – 0.36	8.8 – 9.3	0.04 – 0.62	1.0 – 16.0	4.13	105	100	1000



### WORLDWIDE SUBSIDIARIES AND SALES OFFICES

PANDUIT US/CANADA  
Phone: 800.777.3300

PANDUIT EUROPE LTD.  
London, UK  
cs-emea@panduit.com  
Phone: 44.20.8601.7200

PANDUIT SINGAPORE PTE. LTD.  
Republic of Singapore  
cs-ap@panduit.com  
Phone: 65.6305.7575

PANDUIT JAPAN  
Tokyo, Japan  
cs-japan@panduit.com  
Phone: 81.3.6863.6000

PANDUIT LATIN AMERICA  
Guadalajara, Mexico  
cs-la@panduit.com  
Phone: 52.33.3777.6000

PANDUIT AUSTRALIA PTY. LTD.  
Victoria, Australia  
cs-aus@panduit.com  
Phone: 61.3.9794.9020

For a copy of Panduit product warranties, log on to [www.panduit.com/warranty](http://www.panduit.com/warranty)

For more information

Visit us at [www.panduit.com](http://www.panduit.com)

Contact Customer Service by email: [cs@panduit.com](mailto:cs@panduit.com)  
or by phone: 800.777.3300

**PANDUIT**<sup>®</sup>

©2017 Panduit Corp.  
ALL RIGHTS RESERVED.  
WACB33--SA-ENG  
5/2017

## X-ON Electronics

Largest Supplier of Electrical and Electronic Components

*Click to view similar products for [Cable Tie Mounts](#) category:*

*Click to view products by [Panduit](#) manufacturer:*

Other Similar products are found below :

[3-350087-0](#) [CTB75X75BKA-C](#) [561-EZAB580T](#) [561-EZS375B40](#) [561-TA250125](#) [08443-0](#) [10035-0](#) [561-TA00600](#) [1689174-1](#) [08445-0](#)  
[10351-0](#) [561-TA250125B](#) [20015-0](#) [10350-0](#) [10029-0](#) [08484-0](#) [08446-0](#) [08318-0](#) [PAM075NY-A-C](#) [MTH1-3](#) [10044](#) [151-01802](#) [151-11319](#)  
[151-11819](#) [PLWP1SB-D](#) [PLWP1M-C](#) [PLWP2SA-D](#) [PLWP2SB-D](#) [PLWP2S-C](#) [PLWP1S-D](#) [PLWP1M-D](#) [TA1S8-C](#) [ABM3H-A-L](#) [ABM3H-](#)  
[AT-T0](#) [EMS-A-C0](#) [EMSK3-1-3-0](#) [10079](#) [10030](#) [151-10930](#) [151-10920](#) [3590](#) [151-28320](#) [151-28349](#) [151-28530](#) [151-10914](#) [151-10904](#) [151-](#)  
[10915](#) [151-10916](#) [151-10906](#) [115-06960](#)