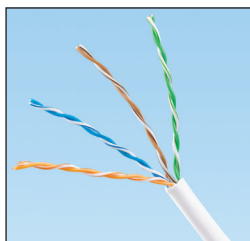


# TX5500™ Premium Category 5e U/UTP Copper Cable

## specifications

Category 5e cable shall meet ANSI/TIA-568-C.2 and IEC 61156-5 Category 5e component standards. The conductors shall be 24 AWG construction with FEP/polyolefin (CMP) or polyolefin (CMR) insulation. The copper conductors shall be twisted in pairs and covered in a low smoke flame-retardant PVC (CMP) jacket or a flame-retardant PVC (CMR) jacket.



## technical information

<b>Electrical performance:</b>	Certified channel performance in a 4-connector configuration up to 100 meters and exceeds ANSI/TIA-568-C.2 Category 5e and ISO 11801 Class D standards at swept frequencies up to 100 MHz Certified component performance up to 100 meters and meets the component requirements of ANSI/TIA-568-C.2 and IEC 61156-5 Category 5e component standards at swept frequencies up to 100 MHz
<b>Conductors/insulators:</b>	Plenum – 24 AWG bare copper wire covered by FEP/polyolefin insulation Riser – 24 AWG bare copper wire covered by polyolefin insulation
<b>Flame rating:</b>	Plenum – NFPA 262 and CSA FT-6 Riser – UL 1666 and CSA FT-4
<b>PoE compliance:</b>	Meets IEEE 802.3af and IEEE 802.3at for PoE applications
<b>Installation tension:</b>	25 lbf. (110 N) maximum
<b>Temperature rating:</b>	Plenum – 32°F to 122°F (0°C to 50°C) during installation 14°F to 167°F (-10°C to 75°C) during operation Riser – 32°F to 122°F (0°C to 50°C) during installation 14°F to 167°F (-10°C to 75°C) during operation
<b>Cable jacket:</b>	Plenum – low smoke, flame-retardant PVC Riser – flame-retardant PVC
<b>Cable diameter:</b>	Plenum – 0.207 in. (5.3mm) nominal Riser – 0.225 in. (5.7mm) nominal
<b>Cable weight:</b>	Plenum – 24 lbs./1000 ft. (10.9 kg/305m) Riser – 22 lbs./1000 ft. (9.9 kg/305m)
<b>Packaging:</b>	1000 ft. (305m), in an easy payout box Tested to ISTA Procedure 1A

## key features and benefits

<b>Easy payout box</b>	Ensures proper performance and provides quick installation
<b>Tested beyond the standards</b>	Cable has been characterized to 450 MHz, 350 MHz above the standard
<b>Descending length cable markings</b>	Easy identification of remaining cable reduces installation time and cable scrap

## applications

TX5500™ U/UTP Copper Cable is a component of the Panduit® TX5500™ UTP Copper Cabling System. This end-to-end system provides Gigabit Ethernet performance with usable bandwidth beyond 100 MHz. With certified performance to the ANSI/TIA-568-C.2 Category 5e and ISO 11801 Class D standards, this system will support the following applications:

- Ethernet 10BASE-T, 100BASE-T (Fast Ethernet), 1000BASE-T (Gigabit Ethernet)
- 115 Mb/s ATM, 622 Mb/s ATM
- Token Ring 4/16

### TX5500™ Category 5e UTP Copper Cabling System

#### TX5500™ Category 5e U/UTP Copper Cable

<b>Plenum:</b>	PUP5504*-UY
<b>Riser:</b>	PUR5504*-UY

#### Mini-Com® TX5e™ UTP Jack Module

<b>Jack module:</b>	CJ5E88TG**
---------------------	------------

#### TX5e™ PLUS UTP Patch Cords

<b>Foot lengths:</b>	UTPCH3***Y
<b>Meter lengths:</b>	UTPCH1M^Y

#### DP5e™ Angled Patch Panels

<b>24-port, 1 RU:</b>	DPA245E88TGY
<b>48-port, 2 RU:</b>	DPA485E88TGY

#### DP5e™ Flat Patch Panels

<b>12-port:</b>	DP125E88TGY
<b>24-port, 1 RU:</b>	DP245E88TGY
<b>48-port, 2 RU:</b>	DP485E88TGY

#### Pan-Punch® 110 Category 5e Punchdown System

See website ([www.panduit.com](http://www.panduit.com)) or catalog for complete system information

#### Cable Prep Tools

<b>Wire snipping tool:</b>	CWST
<b>Wire stripping tool:</b>	CJAST

\*To designate color, add suffix WH (White), BU (Blue), IG (International Gray), YL (Yellow), BL (Black), GR (Green), OR (Orange), RD (Red), or VL (Violet). For additional cable colors, contact customer service.

\*\*To designate color, add suffix IW (Off White), EI (Electric Ivory), IG (International Gray), WH (White), BL (Black), OR (Orange), RD (Red), BU (Blue), GR (Green), YL (Yellow), or VL (Violet).

\*\*\*For lengths 1 to 20 feet (increments of one foot) and 25, 30, 35, 40 feet, change the length designation in part number to the desired length. For standard cable colors other than Off White, add suffix BL (Black), BU (Blue), GR (Green), RD (Red), YL (Yellow), OR (Orange), or VL (Violet) before Y at the end of the part number. For example, the part number for a blue, 15-foot patch cord is UTPCH15BUY.

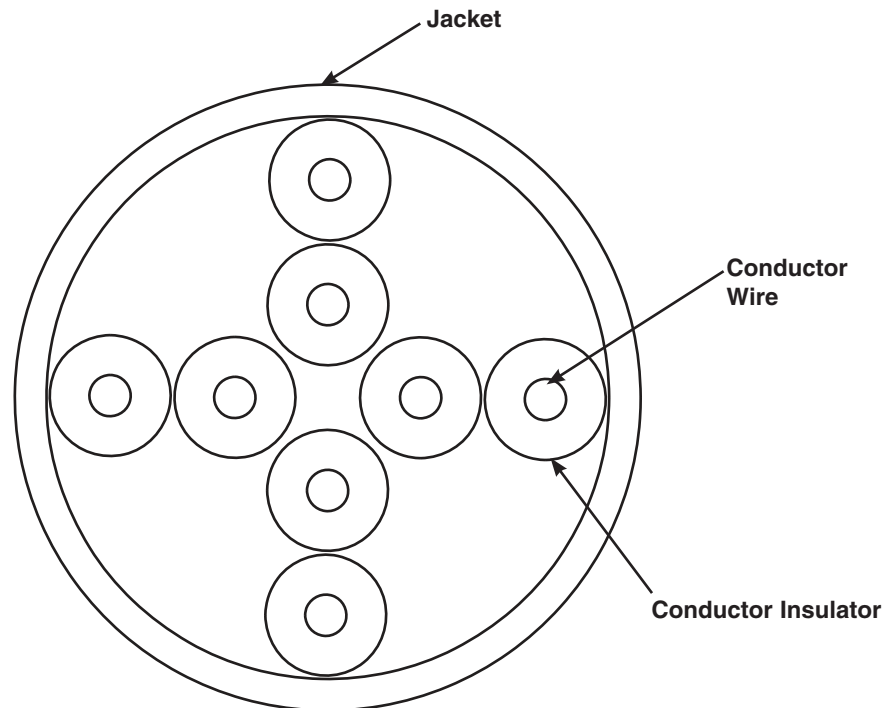
^For lengths 1 to 10 meters (increments of one meter) and 0.5, 1.5, 2.5, 15, 20 meters, change the length designation in the part number to the desired length. For standard cable colors other than Off White, add suffix BL (Black), BU (Blue), RD (Red), YL (Yellow), GR (Green), OR (Orange), or VL (Violet) after the M in the part number. For example, the part number for a blue, 5-meter patch cord is UTPCH5MBUY.

# TX5500™ Premium Category 5e U/UTP Copper Cable

## additional specifications

Mechanical Test	
<i>Ultimate Breaking Strength</i>	>90 lbf (400N)
<i>Minumum Bend Radius</i>	4 x cable diameter
Electrical Test	
<i>Nominal Velocity of Propagation (NVP)</i>	CMP – 72% nominal CMR – 70% nominal
<i>Operating Voltage, Maximum</i>	80 V

## cable construction



### WORLDWIDE SUBSIDIARIES AND SALES OFFICES

PANDUIT CANADA  
Markham, Ontario  
cs-cdn@panduit.com  
Phone: 800.777.3300

PANDUIT EUROPE LTD.  
London, UK  
cs-emea@panduit.com  
Phone: 44.20.8601.7200

PANDUIT SINGAPORE PTE. LTD.  
Republic of Singapore  
cs-ap@panduit.com  
Phone: 65.6305.7575

PANDUIT JAPAN  
Tokyo, Japan  
cs-japan@panduit.com  
Phone: 81.3.6863.6000

PANDUIT LATIN AMERICA  
Guadalajara, Mexico  
cs-la@panduit.com  
Phone: 52.33.3777.6000

PANDUIT AUSTRALIA PTY. LTD.  
Victoria, Australia  
cs-aus@panduit.com  
Phone: 61.3.9794.9020

For a copy of Panduit product warranties, log on to [www.panduit.com/warranty](http://www.panduit.com/warranty)

For more information

Visit us at [www.panduit.com](http://www.panduit.com)

Contact Customer Service by email: [cs@panduit.com](mailto:cs@panduit.com)  
or by phone: 800.777.3300

**PANDUIT**®

©2015 Panduit Corp.  
ALL RIGHTS RESERVED.  
**COSP259--WW-ENG**  
Replaces WW-COSP139  
5/2015

## X-ON Electronics

Largest Supplier of Electrical and Electronic Components

*Click to view similar products for [Multi-Conductor Cables](#) category:*

*Click to view products by [Panduit](#) manufacturer:*

Other Similar products are found below :

[89182-010-1000](#) [89705-008-500](#) [6000FE-877-1000](#) [CS2885-000](#) [M27500-20SP2S23](#) [6300FE-877-U1000](#) [6309UE-877-1000](#) [M3905-BK005](#)  
[6502FE 8771000](#) [6541PA-008-U1000](#) [CV6807-000](#) [CW9530-000](#) [CX6543-000](#) [CXA-0066-20-4-9CS2973](#) [CXA-0078-16-1-9CS2405](#) [CXA-](#)  
[0078-22-4-9CS2405](#) [CXA-0078-24-4-9CS2405](#) [CXA-0140-16-6/9-9CS2405](#) [CY0660-000](#) [720451-000](#) [752687-000](#) [768146-000](#) [773159-000](#)  
[82841-877-5000](#) [83318E-009-500](#) [8348-060-500](#) [83559-002-1000](#) [83653-002-5000](#) [83659-002-1000](#) [83709-002-1000](#) [8404-060-500](#) [8469](#)  
[060100](#) [858171-000](#) [8628-060-500](#) [868361-001](#) [8730-060-1000](#) [8737-060-U1000](#) [8747-060-100](#) [8747-060-1000](#) [8769-060-1000](#) [8775-060-](#)  
[500](#) [877541-000](#) [8780-060-1000](#) [8782-001-U1000](#) [88444-002-1000](#) [9159-060-500](#) [939870-000](#) [9423 060U500](#) [9444 060U1000](#) [9497](#)  
[0001000](#)