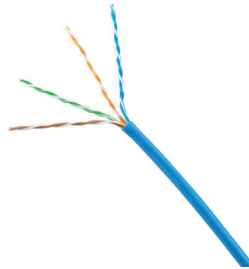


# TX6™ Category 6 U/UTP Copper Cable – North America

## specifications

Category 6 cable shall meet ANSI/TIA-568-C.2 Category 6 component standard. The conductors shall be 23 AWG construction with FEP/polyolefin insulation. The copper conductors shall be twisted in pairs and covered by a low smoke, flame-retardant (CMP) PVC jacket.



## technical information

<b>Electrical performance:</b>	Certified channel performance in a 4-connector configuration up to 100 meters and meets ANSI/TIA-568-C.2 Category 6 standard at swept frequencies up to 250MHz  Certified component performance up to 100 meters and meets the component requirements of ANSI/TIA-568-C.2 Category 6 component standard at swept frequencies up to 250 MHz
<b>Standards compliance:</b>	UL Listed CMP-LP (0.5A) for Plenum
<b>Conductors/insulators:</b>	Plenum – 23 AWG solid copper covered by FEP/polyolefin insulation
<b>Insulation diameter:</b>	.033 in. - .043 in.
<b>Flame rating:</b>	Plenum – NFPA 262
<b>PoE compliance:</b>	Meets IEEE 802.3af, IEEE 802.3at and IEEE 802.3bt for PoE applications
<b>Installation tension:</b>	25 lbf (110N) maximum
<b>Temperature rating:</b>	32°F to 122°F (0°C to 50°C) during installation -4°F to 194°F (-20°C to 90°C) during operation (Plenum)
<b>Cable jacket:</b>	Plenum – low smoke, flame-retardant PVC
<b>Cable diameter:</b>	Plenum – 0.205 in. (5.2mm) nominal
<b>Cable weight:</b>	Plenum – 25 lbs./1000 ft. (12 kg/305m)
<b>Packaging:</b>	1000 ft. (305m) in an easy payout carton Package tested to ISTA Procedure1A

## key features and benefits

<b>Third party tested</b>	Cable has been tested as part of the Category 6 UTP Copper Cabling System by an independent laboratory and complies with the electrical channel requirements of the following standard: ANSI/TIA-568-C.2 Category 6
<b>Descending length cable markings</b>	Easy identification of remaining cable reduces installation cable markings time and cable scrap
<b>Tested beyond the standards</b>	Cable has been characterized to 350 MHz, 100 MHz above the standard
<b>Extended temperature range</b>	Allows operation in 90°C (194°F) ambient environment providing error-free performance in high-density cabinets and large cable bundles running PoE+ or PoE++ applications
<b>Easy payout carton</b>	Ensures proper performance and provides quick installation

## applications

Interoperable and backward compatible, the Panduit TX6™ Cabling System provides design flexibility to protect network investments well into the future. With certified performance to the ANSI/TIA-568-C.2 Category 6 and ISO 11801 Class E standards, this system will support the following applications:

- Ethernet 10BASE-T, 100BASE-T (Fast Ethernet), 1000BASE-T (Gigabit Ethernet), 10GBASE-T (10 Gigabit Ethernet over limited distances as specified in the industry 10GBASE-T standards)
- 155 Mb/s ATM, 622 Mb/s ATM, 1.2 Gb/s ATM
- Token Ring 4/16

### Category 6 U/UTP Copper Cable

**Plenum:** PUP6C04\*\*-ULP

### Cable Prep Tools

**Wire snipping tool:** CWST

**Wire stripping tool:** CFAST

\*\*For standard cable colors, add suffix BU(Blue), WH (White), RD (Red), OR (Orange), YL (Yellow), GR (Green), VL (Violet), IG(International Gray), or BL (Black). Cable available in a standard pallet configuration of 36 cartons per pallet.

For other colors or pallet configurations, contact customer service.

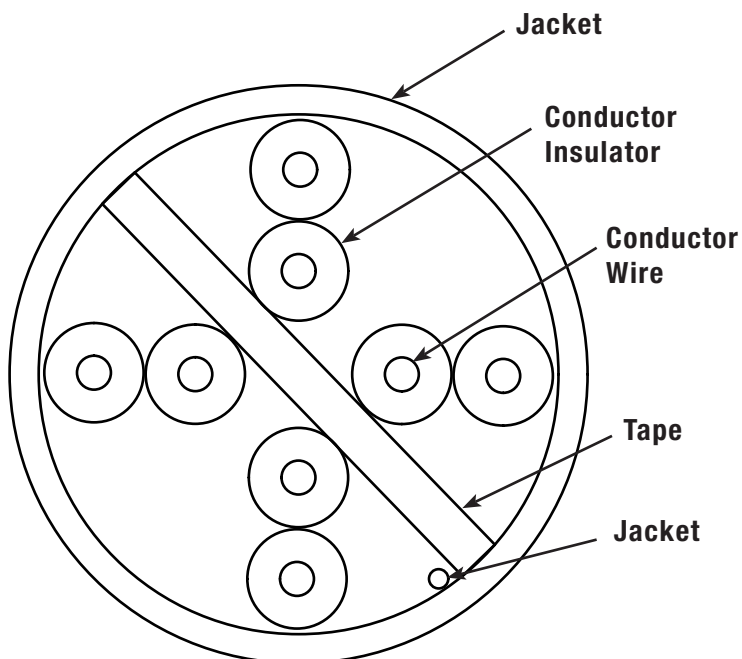
Visit [www.panduit.com](http://www.panduit.com) for connectivity components.

# TX6™ Category 6 U/UTP Copper Cable – North America

## additional specifications

Mechanical Test	
Ultimate Breaking Strength	>90 lbf (400N)
Minimum Bend Radius	4 x cable diameter
Electrical Test	
Nominal Velocity of Propagation (NVP)	CMP – 72%
Operating Voltage, Maximum	80V

## cable construction



### WORLDWIDE SUBSIDIARIES AND SALES OFFICES

PANDUIT US/CANADA  
Phone: 800.777.3300

PANDUIT EUROPE LTD.  
London, UK  
cs-emea@panduit.com  
Phone: 44.20.8601.7200

PANDUIT SINGAPORE PTE. LTD.  
Republic of Singapore  
cs-ap@panduit.com  
Phone: 65.6305.7575

PANDUIT JAPAN  
Tokyo, Japan  
cs-japan@panduit.com  
Phone: 81.3.6863.6000

PANDUIT LATIN AMERICA  
Guadalajara, Mexico  
cs-la@panduit.com  
Phone: 52.33.3777.6000

PANDUIT AUSTRALIA PTY. LTD.  
Victoria, Australia  
cs-aus@panduit.com  
Phone: 61.3.9794.9020

For a copy of Panduit product warranties, log on to [www.panduit.com/warranty](http://www.panduit.com/warranty)

For more information

Visit us at [www.panduit.com](http://www.panduit.com)

Contact Customer Service by email: [cs@panduit.com](mailto:cs@panduit.com)  
or by phone: 800.777.3300

**PANDUIT**®

© 2018 Panduit Corp.  
ALL RIGHTS RESERVED.  
COSP421--WW-ENG  
7/2018

## X-ON Electronics

Largest Supplier of Electrical and Electronic Components

*Click to view similar products for [Multi-Conductor Cables](#) category:*

*Click to view products by [Panduit](#) manufacturer:*

Other Similar products are found below :

[8916-GRY-100](#) [8917-BLK-100](#) [8917-GRN/YEL-100](#) [8918-GRN/YEL-100](#) [8920-BRN-1000](#) [8920-RED-1000](#) [89907-LT-DEC/GRY-500](#)  
[CR3909-000](#) [CR3927-000](#) [01342.35T.01](#) [01364.35T.01](#) [003201-000](#) [CS2885-000](#) [CS8782-000](#) [CS9912-000](#) [6200UE-NAT-U1000](#) [CTC-](#)  
[0062-20-9/5-9](#) [CTC-0062-22-9/5-9](#) [6304FE-877-U500](#) [6309UE-877-1000](#) [6320UE-NAT-U1000](#) [644833-000](#) [6502FE 8771000](#) [6504UE-877-](#)  
[U1000](#) [CW9530-000](#) [CX6543-000](#) [CXA-0066-20-4-9CS2973](#) [CXA-0078-16-1-9CS2405](#) [CXA-0078-22-4-9CS2405](#) [CXA-0078-24-4-](#)  
[9CS2405](#) [CXA-0140-16-6/9-9CS2405](#) [CY0660-000](#) [706/2R-BLACK-EACH](#) [720451-000](#) [730859-000](#) [MCC-USB-4-250](#) [752687-000](#)  
[768146-000](#) [773159-000](#) [7934A-BLK-1000](#) [8125-CHR-100](#) [8164-CHR-1000](#) [820457-000](#) [8205-CHR-1000](#) [8240-BLK-U1000](#) [82723-NAT-](#)  
[1000](#) [82907-NAT-500](#) [83003-YEL-500](#) [83005-WHT-500](#) [83006-DK-GRN-100](#)