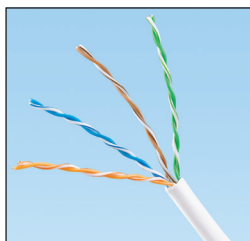


TX5500™ Premium Category 5e U/UTP Copper Cable

specifications

Category 5e cable shall meet ANSI/TIA-568-C.2 and IEC 61156-5 Category 5e component standards. The conductors shall be 24 AWG construction with FEP/polyolefin (CMP) or polyolefin (CMR) insulation. The copper conductors shall be twisted in pairs and covered in a low smoke flame-retardant PVC (CMP) jacket or a flame-retardant PVC (CMR) jacket.



technical information

Electrical performance:	Certified channel performance in a 4-connector configuration up to 100 meters and exceeds ANSI/TIA-568-C.2 Category 5e and ISO 11801 Class D standards at swept frequencies up to 100 MHz Certified component performance up to 100 meters and meets the component requirements of ANSI/TIA-568-C.2 and IEC 61156-5 Category 5e component standards at swept frequencies up to 100 MHz
Conductors/insulators:	Plenum – 24 AWG bare copper wire covered by FEP/polyolefin insulation Riser – 24 AWG bare copper wire covered by polyolefin insulation
Flame rating:	Plenum – NFPA 262 and CSA FT-6 Riser – UL 1666 and CSA FT-4
PoE compliance:	Meets IEEE 802.3af and IEEE 802.3at for PoE applications
Installation tension:	25 lbf. (110 N) maximum
Temperature rating:	Plenum – 32°F to 122°F (0°C to 50°C) during installation 14°F to 167°F (-10°C to 75°C) during operation Riser – 32°F to 122°F (0°C to 50°C) during installation 14°F to 167°F (-10°C to 75°C) during operation
Cable jacket:	Plenum – low smoke, flame-retardant PVC Riser – flame-retardant PVC
Cable diameter:	Plenum – 0.207 in. (5.3mm) nominal Riser – 0.225 in. (5.7mm) nominal
Cable weight:	Plenum – 24 lbs./1000 ft. (10.9 kg/305m) Riser – 22 lbs./1000 ft. (9.9 kg/305m)
Packaging:	1000 ft. (305m), in an easy payout box Tested to ISTA Procedure 1A

key features and benefits

Easy payout box	Ensures proper performance and provides quick installation
Tested beyond the standards	Cable has been characterized to 450 MHz, 350 MHz above the standard
Descending length cable markings	Easy identification of remaining cable reduces installation time and cable scrap

applications

TX5500™ U/UTP Copper Cable is a component of the Panduit® TX5500™ UTP Copper Cabling System. This end-to-end system provides Gigabit Ethernet performance with usable bandwidth beyond 100 MHz. With certified performance to the ANSI/TIA-568-C.2 Category 5e and ISO 11801 Class D standards, this system will support the following applications:

- Ethernet 10BASE-T, 100BASE-T (Fast Ethernet), 1000BASE-T (Gigabit Ethernet)
- 115 Mb/s ATM, 622 Mb/s ATM
- Token Ring 4/16

www.panduit.com

TX5500™ Category 5e UTP Copper Cabling System

TX5500™ Category 5e U/UTP Copper Cable

Plenum:	PUP5504*-UY
Riser:	PUR5504*-UY

Mini-Com® TX5e™ UTP Jack Module

Jack module:	CJ5E88TG**
---------------------	------------

TX5e™ PLUS UTP Patch Cords

Foot lengths:	UTPCH3***Y
Meter lengths:	UTPCH1M^Y

DP5e™ Angled Patch Panels

24-port, 1 RU:	DPA245E88TGY
48-port, 2 RU:	DPA485E88TGY

DP5e™ Flat Patch Panels

12-port:	DP125E88TGY
24-port, 1 RU:	DP245E88TGY
48-port, 2 RU:	DP485E88TGY

Pan-Punch® 110 Category 5e Punchdown System

See website (www.panduit.com) or catalog for complete system information

Cable Prep Tools

Wire snipping tool:	CWST
Wire stripping tool:	CJAST

*To designate color, add suffix WH (White), BU (Blue), IG (International Gray), YL (Yellow), BL (Black), GR (Green), OR (Orange), RD (Red), or VL (Violet). For additional cable colors, contact customer service.

**To designate color, add suffix IW (Off White), EI (Electric Ivory), IG (International Gray), WH (White), BL (Black), OR (Orange), RD (Red), BU (Blue), GR (Green), YL (Yellow), or VL (Violet).

***For lengths 1 to 20 feet (increments of one foot) and 25, 30, 35, 40 feet, change the length designation in part number to the desired length. For standard cable colors other than Off White, add suffix BL (Black), BU (Blue), GR (Green), RD (Red), YL (Yellow), OR (Orange), or VL (Violet) before Y at the end of the part number. For example, the part number for a blue, 15-foot patch cord is UTPCH15BUY.

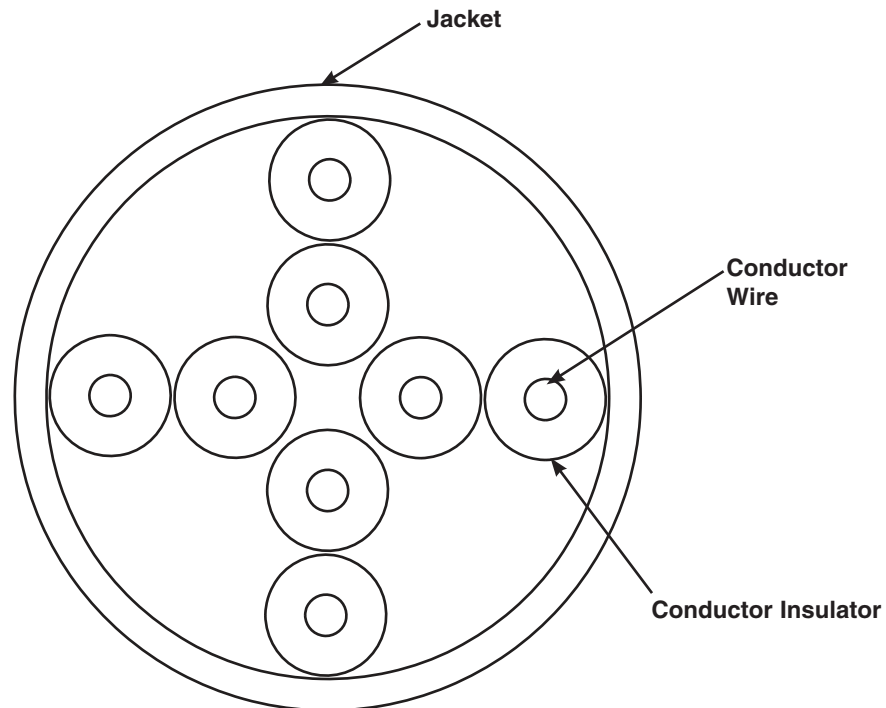
^For lengths 1 to 10 meters (increments of one meter) and 0.5, 1.5, 2.5, 15, 20 meters, change the length designation in the part number to the desired length. For standard cable colors other than Off White, add suffix BL (Black), BU (Blue), RD (Red), YL (Yellow), GR (Green), OR (Orange), or VL (Violet) after the M in the part number. For example, the part number for a blue, 5-meter patch cord is UTPCH5MBUY.

TX5500™ Premium Category 5e U/UTP Copper Cable

additional specifications

Mechanical Test	
<i>Ultimate Breaking Strength</i>	>90 lbf (400N)
<i>Minumum Bend Radius</i>	4 x cable diameter
Electrical Test	
<i>Nominal Velocity of Propagation (NVP)</i>	CMP – 72% nominal CMR – 70% nominal
<i>Operating Voltage, Maximum</i>	80 V

cable construction



WORLDWIDE SUBSIDIARIES AND SALES OFFICES

PANDUIT CANADA
Markham, Ontario
cs-cdn@panduit.com
Phone: 800.777.3300

PANDUIT EUROPE LTD.
London, UK
cs-emea@panduit.com
Phone: 44.20.8601.7200

PANDUIT SINGAPORE PTE. LTD.
Republic of Singapore
cs-ap@panduit.com
Phone: 65.6305.7575

PANDUIT JAPAN
Tokyo, Japan
cs-japan@panduit.com
Phone: 81.3.6863.6000

PANDUIT LATIN AMERICA
Guadalajara, Mexico
cs-la@panduit.com
Phone: 52.33.3777.6000

PANDUIT AUSTRALIA PTY. LTD.
Victoria, Australia
cs-aus@panduit.com
Phone: 61.3.9794.9020

For a copy of Panduit product warranties, log on to www.panduit.com/warranty

PANDUIT®

For more information
Visit us at www.panduit.com
Contact Customer Service by email: cs@panduit.com
or by phone: 800.777.3300

©2015 Panduit Corp.
ALL RIGHTS RESERVED.
COSP259--WW-ENG
Replaces WW-COSP139
5/2015

X-ON Electronics

Largest Supplier of Electrical and Electronic Components

Click to view similar products for [Wire Ducting](#) category:

Click to view products by [Panduit](#) manufacturer:

Other Similar products are found below :

[66200A-10](#) [CVED32VEPG](#) [CVED40VEPG](#) [F512D5-5F140Y](#) [F512D5-5F200Y](#) [F512D5-5F26Y](#) [F512D5-5F30Y](#) [F512D5-5F33Y](#) [F512D5-5F34Y](#) [F512D5-5F45Y](#) [F512D5-5F50Y](#) [F512D5-5F54Y](#) [F512D5-5F66Y](#) [F512D5-5F70Y](#) [F512D5-5F75Y](#) [F512D5-5F90Y](#) [F612D5-5F100Y](#) [F612D5-5F130Y](#) [F612D5-5F50Y](#) [F612D5-5F56Y](#) [F612D5-5F58Y](#) [F6L12D5-5F46](#) [F912D5-5F11Y](#) [F912D5-5F170Y](#) [F912D5-5F175Y](#) [F912D5-5F230Y](#) [F912D5-5F300Y](#) [F912D5-5F55Y](#) [F912D5-5F56Y](#) [F912D5-5F63Y](#) [F912D5-5F6Y](#) [F912D5-5F75Y](#) [F912D5-5F85Y](#) [F912D5-5F86Y](#) [F912D5-5F88Y](#) [F912D5-5F96Y](#) [FAP0047WBLMTP](#) [FAP12WBRDRDDLZ](#) [FAP12WDYLYLDLZ](#) [FAP12WEORORDLZ](#) [FAP6WEORORDLZ](#) [FAP6WFDBDBDLZ](#) [FAP8WEORORDLZ](#) [FCE2UWCL](#) [800A-LB](#) [802A-ECSP](#) [802I-ICSP](#) [FJQADH](#) [FJQFXT](#) [PED10](#)