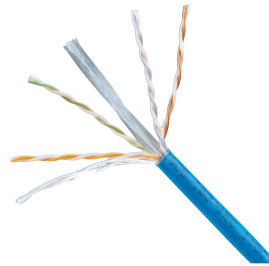


TX6000™ Enhanced Category 6 UTP Copper Cable

specifications

Category 6 cable shall exceed ANSI/TIA-568-C.2 and IEC 61156-5 Category 6 component standards. The conductors shall be 23 AWG construction with FEP/polyolefin (CMP) or polyolefin (CMR) insulation. The copper conductors shall be twisted in pairs, separated by a cross-divider and covered by a low smoke, flame-retardant (CMP) jacket or a flame-retardant (CMR) jacket.



technical information

Electrical performance:	Certified channel performance in a 4-connector configuration up to 100 meters and exceeds ANSI/TIA-568-C.2 Category 6 and ISO 11801 Class E standards at swept frequencies up to 250 MHz Certified component performance up to 100 meters and exceeds the component requirements of ANSI/TIA-568-C.2 and IEC 61156-5 Category 6 component standards at swept frequencies up to 250 MHz
Conductors/insulators:	Plenum – 23 AWG bare copper wire covered by FEP/polyolefin insulation Riser – 23 AWG bare copper wire covered by polyolefin insulation
Flame rating:	Plenum – NFPA 262 and CSA FT-6 Riser – UL1666 and CSA FT-4
PoE compliance:	Meets IEEE 802.3af and IEEE 802.3at for PoE applications
Installation tension:	25 lbf (110 N) maximum
Temperature rating:	32°F to 122°F (0°C to 50°C) during installation -4°F to 167°F (-20°C to 75°C) during operation
Cable jacket:	Plenum – low smoke, flame-retardant PVC Riser – flame-retardant PVC
Cable diameter:	Plenum – 0.225 in. (5.7mm) nominal Riser – 0.243 in. (6.2mm) nominal
Cable weight:	Plenum – 30 lbs./1000 ft. (13.6 kg/305m) Riser – 28 lbs./1000 ft. (12.7 kg/305m)
Packaging:	1000 ft. (305m), in EZ-Brake™ reel-in-a-box Package tested to ISTA Procedure 1A

key features and benefits

Third party tested	Cable has been tested as part of the TX6000™ Copper Cabling System by an independent laboratory and complies with the electrical channel requirements of the following standard: ANSI/TIA-568-C.2 Category 6
Guaranteed channel performance above the standards	Industry leading guaranteed channel performance above the TIA/ISO standards with headroom warranty
Integrated pair divider	Separates pairs for exceptional cable performance
EZ-Brake™ reel-in-a-box packaging	Ensures proper performance and provides quick installation
Tested beyond the standards	Cable has been characterized to 550 MHz, 300 MHz above the standard
Descending length cable markings	Easy identification of remaining cable reduces installation time and cable scrap

applications

TX6000™ UTP Copper Cable is a component of the Panduit™ TX6000™ UTP Copper Cabling System. Interoperable and backward compatible, this end-to-end system provides design flexibility to protect network investments well into the future. With certified performance to the ANSI/TIA-568-C.2 Category 6 and ISO 11801 Class E standards, this system will support the following applications:

- Ethernet 10BASE-T, 100BASE-T (Fast Ethernet), 1000BASE-T (Gigabit Ethernet), 10GBASE-T (10 Gigabit Ethernet) over limited distances as specified in the industry 10GBASE-T standards)
- 155 Mb/s ATM, 622 Mb/s ATM, 1.2 Gb/s ATM
- Token Ring 4/16

TX6000™ UTP Copper Cabling System

TX6000™ UTP Copper Cable

Plenum:	PUP6004*-UY
Riser:	PUR6004*-UY

Mini-Com® TX6™ PLUS UTP Jack Module

Jack module:	CJ688TG**
---------------------	-----------

TX6™ PLUS UTP Patch Cords

Foot lengths:	UTPSP3***Y
Meter lengths:	UTPSP1M^Y

DP6™ PLUS Angled Punchdown Patch Panels

24-port, 1 RU:	DPA24688TGY
48-port, 2 RU:	DPA48688TGY

DP6™ PLUS Flat Punchdown Patch Panels

12-port:	DP12688TGY
24-port, 1 RU:	DP24688TGY
48-port, 2 RU:	DP48688TGY

GP6™ PLUS Category 6 Punchdown System

See website (www.panduit.com) or catalog for complete system information.

DP6™ PLUS Flat Punchdown

Wire snipping tool:	CWST
Wire stripping tool:	CJAST

*To designate a color, add suffix BU (Blue), WH (White), YL (Yellow), or IG (International Gray). For additional cable colors, contact customer service.

**To designate color, add suffix IW (Off White), EI (Electric Ivory), IG (International Gray), WH (White), BL (Black), OR (Orange), RD (Red), BU (Blue), GR (Green), YL (Yellow), or VL (Violet).

***For lengths 1 to 20 feet (increments of one foot) and 25, 30, 35, 40 feet, change the length designation in part number to the desired length. For standard cable colors other than Off White, add suffix BL (Black), BU (Blue), GR (Green), RD (Red), YL (Yellow), OR (Orange), or VL (Violet) before Y at the end of the part number. For example, the part number for a blue, 15-foot patch cord is UTPSP15BUY.

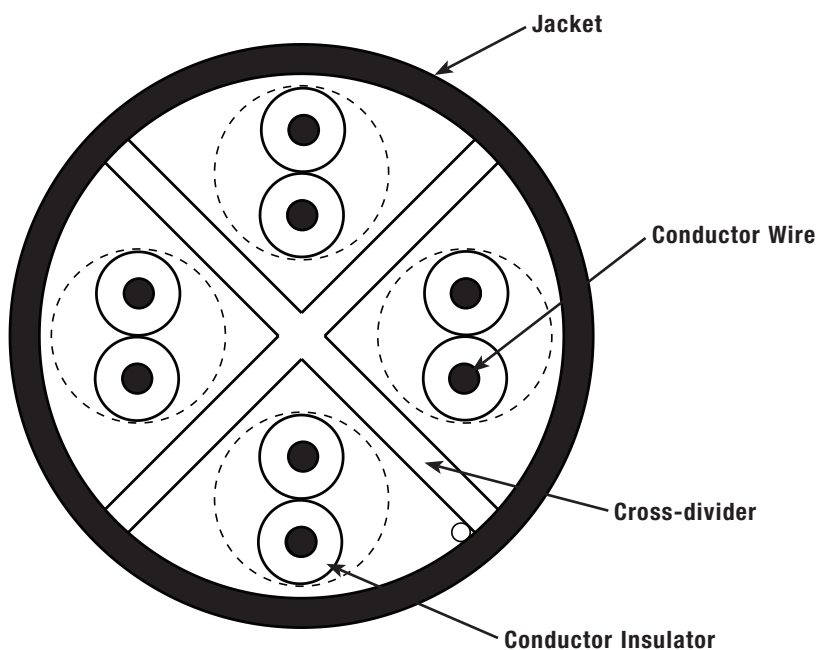
^For lengths 1 to 10 meters (increments of one meter) and 0.5, 1.5, 2.5, 15, 20 meters, change the length designation in the part number to the desired length. For standard cable colors other than Off White, add suffix BL (Black), BU (Blue), RD (Red), YL (Yellow), GR (Green), OR (Orange), or VL (Violet) before Y at the end of the part number. For example, the part number for a blue, 5-meter patch cord is UTPSP5MBUY.

TX6000™ Enhanced Category 6 UTP Copper Cable

additional specifications

Mechanical Test	
Ultimate Breaking Strength	> 90 lbf (400 N)
Minimum Bend Radius	4 x cable diameter
Electrical Test	
Nominal Velocity of Propagation (NVP)	CMR – 70%, CMP – 72%
Operating Voltage, Maximum	80V

cable construction



WORLDWIDE SUBSIDIARIES AND SALES OFFICES

PANDUIT US/CANADA
Phone: 800.777.3300

PANDUIT EUROPE LTD.
London, UK
cs-emea@panduit.com
Phone: 44.20.8601.7200

PANDUIT SINGAPORE PTE. LTD.
Republic of Singapore
cs-ap@panduit.com
Phone: 65.6305.7575

PANDUIT JAPAN
Tokyo, Japan
cs-japan@panduit.com
Phone: 81.3.6863.6000

PANDUIT LATIN AMERICA
Guadalajara, Mexico
cs-la@panduit.com
Phone: 52.33.3777.6000

PANDUIT AUSTRALIA PTY. LTD.
Victoria, Australia
cs-aus@panduit.com
Phone: 61.3.9794.9020

For a copy of Panduit product warranties, log on to www.panduit.com/warranty

For more information

Visit us at www.panduit.com

Contact Customer Service by email: cs@panduit.com
or by phone: 800.777.3300

PANDUIT®

© 2017 Panduit Corp.
ALL RIGHTS RESERVED.
COSP260--WW-ENG
Replaces WW-COSP136
8/2017

X-ON Electronics

Largest Supplier of Electrical and Electronic Components

Click to view similar products for [Multi-Conductor Cables](#) category:

Click to view products by [Panduit](#) manufacturer:

Other Similar products are found below :

[8916-GRY-100](#) [8917-BLK-100](#) [8917-GRN/YEL-100](#) [8918-GRN/YEL-100](#) [8920-BRN-1000](#) [8920-RED-1000](#) [89907-LT-DEC/GRY-500](#)
[CR3909-000](#) [CR3927-000](#) [01342.35T.01](#) [01364.35T.01](#) [003201-000](#) [CS2885-000](#) [CS8782-000](#) [CS9912-000](#) [6200UE-NAT-U1000](#) [CTC-](#)
[0062-20-9/5-9](#) [CTC-0062-22-9/5-9](#) [6304FE-877-U500](#) [6309UE-877-1000](#) [6320UE-NAT-U1000](#) [644833-000](#) [6502FE 8771000](#) [6504UE-877-](#)
[U1000](#) [CW9530-000](#) [CX6543-000](#) [CXA-0066-20-4-9CS2973](#) [CXA-0078-16-1-9CS2405](#) [CXA-0078-22-4-9CS2405](#) [CXA-0078-24-4-](#)
[9CS2405](#) [CXA-0140-16-6/9-9CS2405](#) [CY0660-000](#) [706/2R-BLACK-EACH](#) [720451-000](#) [730859-000](#) [MCC-USB-4-250](#) [752687-000](#)
[768146-000](#) [773159-000](#) [7934A-BLK-1000](#) [8125-CHR-100](#) [8164-CHR-1000](#) [820457-000](#) [8205-CHR-1000](#) [8240-BLK-U1000](#) [82723-NAT-](#)
[1000](#) [82907-NAT-500](#) [83003-YEL-500](#) [83005-WHT-500](#) [83006-DK-GRN-100](#)