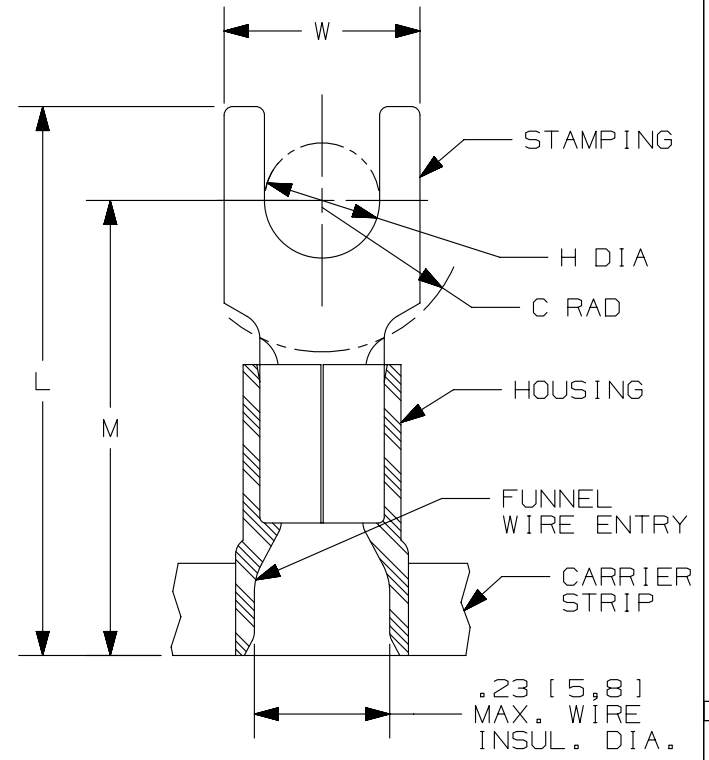


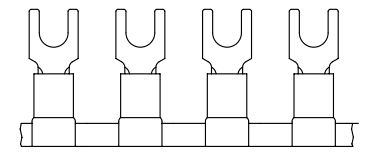
THIS COPY IS PROVIDED ON A RESTRICTED BASIS AND IS NOT TO BE USED IN ANY WAY DETRIMENTAL TO THE INTERESTS OF PANDUIT CORP.

| PANDUIT PART # | STUD SIZE |        | DIMENSIONS in. [mm] |                   |                   |                   |                   |
|----------------|-----------|--------|---------------------|-------------------|-------------------|-------------------|-------------------|
|                | ENGLISH   | METRIC | L ± .03<br>[0,76]   | W ± .01<br>[0,25] | C ± .02<br>[0,51] | M ± .03<br>[0,76] | H ± .01<br>[0,25] |
| PV10-6FB       | #6        | M3, 5  | .99 [25,2]          | .30 [7,6]         | .22 [5,6]         | .78 [19,8]        | .15 [3,8]         |
| PV10-8FB       | #8        | M4     | 1.00 [25,4]         | .30 [7,6]         | .22 [5,6]         | .78 [19,8]        | .17 [4,3]         |
| PV10-10FB      | #10       | --     | 1.04 [26,4]         | .34 [8,6]         | .22 [5,6]         | .78 [19,8]        | .20 [5,0]         |
| PMV6-5FB       | --        | M5     | 1.02 [25,9]         | .38 [9,7]         | .24 [6,2]         | .79 [20,1]        | .21 [5,3]         |
| PV10-14FB      | 1/4"      | M6     | 1.13 [28,7]         | .49 [12,5]        | .32 [8,1]         | .88 [22,4]        | .27 [6,9]         |



NOTES:

- USED FOR:
  - A. #12-10 AWG [4,0-6,0 mm<sup>2</sup>] SOLID OR STRANDED COPPER WIRE
  - B. 221°F [105°C] MAX. OPERATING TEMPERATURE
  - C. 600 V. MAX. VOLTAGE RATING
- INSTALLATION TOOLS:
  - A. PRESSES: CP-871
  - B. APPLICATOR: CA-800, CA9
  - C. DIE INSERTS: CD-800-3, CD9-3B
- WIRE STRIP LENGTH: 1 1/32 <sup>+1/32</sup>/<sub>0</sub> [8,7 <sup>+0,8</sup>/<sub>0</sub>]
- MATERIAL:
  - A. STAMPING: .04" [1,0] THK COPPER, TIN PLATED
  - B. HOUSING: VINYL, YELLOW
- SEE [www.panduit.com](http://www.panduit.com) FOR PACKAGE QUANTITIES INDICATED BY PART NUMBER SUFFIX
- DIMENSIONS IN BRACKETS ARE METRIC EQUIVALENT



LISTED  
587H  
E52164

CERTIFIED  
LR3122

B

B

A

A

| REV | DATE     | BY  | CHK | APR | DESCRIPTION   | ECN    |
|-----|----------|-----|-----|-----|---|--------|
| 06  | 09.07.12 | JBN | LCA | VMB | ADDED METRIC EQUIVALENT. REVISED NOTES. UPDATED DRAWING TO CURRENT STANDARDS. | A41079 |

|   |  |   |  |  |
|---|--|---|--|--|
| TITLE   |  | FORK TERMINALS, 2 PC. VINYL INSULATED, #12-10 |  |  |
|   |  | CUSTOMER DRAWING                              |  |  |
| ITEM REVISION NAME  |  | N41079BA/06                                   |  |  |
| DATASET FILE NAME   |  | N41079BA_DC/06A                               |  |  |
| UNLESS OTHERWISE SPECIFIED, DIMENSIONAL TOLERANCES ARE: IN [mm] |  | MATERIAL: SEE NOTES                           |  |  |
| .x ± .1 [2,54]  |  | .xxx ± .005 [0,13]                            |  |  |
| .xx ± .01 [0,25]  |  | ANGLES ± 5°                                   |  |  |
| DRAWN BY  |  | DRAWING NUMBER: A41079                        |  |  |
| LM  |  | SHT 1 OF 1                                    |  |  |
| DATE  |  | SCALE   |  |  |
| -   |  | N.T.S.  |  |  |
| CHK   |  | SIZE  |  |  |
| -   |  | A   |  |  |

D10100DA/15

## X-ON Electronics

Largest Supplier of Electrical and Electronic Components

*Click to view similar products for [Terminals](#) category:*

*Click to view products by [Panduit](#) manufacturer:*

Other Similar products are found below :

[00-054007-01074-6](#) [00-054007-70206-1](#) [00-054007-70210-8](#) [00-054007-70217-7](#) [00-054007-70226-9](#) [00-054007-70228-3](#) [00-054007-70248-1](#) [00-054007-70256-6](#) [00-054007-70301-3](#) [00-054007-70316-7](#) [0-0320562-0](#) [00-054007-49560-4](#) [00-054007-70209-2](#) [00-054007-70225-2](#) [00-054007-70227-6](#) [00-054007-70231-3](#) [00-054007-70241-2](#) [00-054007-70242-9](#) [00-054007-70244-3](#) [00-054007-70246-7](#) [00-054007-70263-4](#) [00-054007-70288-7](#) [00-054007-70290-0](#) [00-054007-70300-6](#) [00-054007-70304-4](#) [01-2065-1-0216](#) [01-2900-1-04412](#) [00581P0075](#) [600TS-10](#) [60205-1](#) [604200-1](#) [605601-1](#) [60598-1-CUT-TAPE](#) [61314-6-C](#) [61810-3](#) [61-S](#) [61-SN](#) [626-0194](#) [62-NBM-A](#) [62-SN](#) [62-SP](#) [63-S](#) [640179-1](#) [M55155/059I03](#) [M55155/079C01](#) [M55155/099H02](#) [M55155/109H01](#) [M55155/109H02](#) [M55155/12XH05](#) [M55155/16XH02](#)