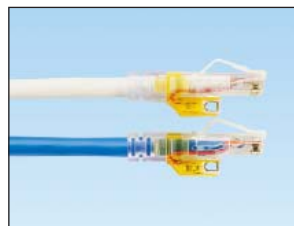


# PanView iQ™ (PViQ™) Interconnect Patch Cords – Enhanced

## specifications

Category 6A/Class E<sub>A</sub> UTP interconnect patch cords shall be constructed of 26 AWG stranded copper cable with a PViQ™ Patch Panel Plug on one end and a LED switch modular plug on the other end. Copper conductors in patch cable shall be twisted in pairs and separated by a quadrant separator. All four pairs shall be surrounded by MaTriX tape. Additional 26 AWG conductors shall connect the LED switch plug to 9th and 10th contacts on the PViQ™ Patch Panel Plug. A flame retardant jacket will cover all conductors. The MaTriX tape shall suppress alien crosstalk and allow 10 Gb/s transmission. Patch cords shall be used in conjunction with intelligent patch panels and exclusively for interconnect architectures.



## technical information

<b>Category 6A/Class E<sub>A</sub> channel performance:</b>	Certified channel performance in a 4-connector configuration up to 100 meters and exceeds the requirements of ANSI/TIA-568-C.2 Category 6A and ISO 11801 Class E <sub>A</sub> standards for supporting 10GBASE-T transmission over twisted-pair cabling systems; attenuation de-rating factor is 1.5
	Certified component performance to the ANSI/TIA-568-C.2 component standard for supporting 10GBASE-T transmission over twisted-pair cabling systems
<b>Cable diameter:</b>	0.255 in. (6.5mm) nominal
<b>Temperature rating:</b>	14°F to 140°F (-10°C to 60°C) during operation -40°F to 158°F (-40°C to 70°C) during storage
<b>FCC and ANSI compliance:</b>	Meets ANSI/TIA/EIA-1096-A; contacts plated with 50 microinches of gold for superior performance
<b>IEC compliance:</b>	Meets IEC 60603-7
<b>PoE compliance:</b>	Meets requirements of IEEE 802.3af and IEEE 802.3at for PoE applications
<b>UL listed:</b>	UL 1863

## key features and benefits

<b>Switch/server port detection</b>	Communicates connection status between switch/server and PViQ™ Patch Panels
<b>100% performance tested</b>	Assurance that each patch cord will deliver the critical electrical performance requirements
<b>Integral pair manager</b>	Optimizes performance and consistency by reducing untwist at the plug
<b>Slender strain relief boot</b>	Provides easy access in high-density applications
<b>Patented tangle free latch</b>	Prevents snags and provides easy release, saving time on frequent moves, adds, and changes
<b>Ninth conductor continuity</b>	Provides continuity through the patch cord enabling the PanView iQ™ System to monitor connectivity without interfering with Ethernet performance
<b>Variety of cable colors and lengths</b>	Meets individual length and color-coding requirements for greater system flexibility
<b>LED indicator and switch</b>	LEDs aid in patch cord tracing and connectivity changes at the switch end; they also identify unauthorized removals or insertions

## applications

Panduit's PViQ™ System Hardware, which includes intelligent patch panels, modules and cabling, seamlessly feeds information directly into the Physical Infrastructure Manager (PIM™) Software Platform to provide continuous real-time patch field monitoring and visibility of physical infrastructure connectivity for enhanced system reliability, security and capacity management.

PViQ™ Patch Panels support tiered installations to provide customers with the flexibility of installing

passive connectivity that may be upgraded to fully managed at a future time. PViQ™ Interconnect Patch Cords enable intelligent physical infrastructure management for interconnect architectures by verifying switch port connection and communicating with the system software, to allow improved network visibility. Interconnect patch cords can reduce patch panel requirements by 50% over cross-connect designs, reducing installation and deployment costs.

### PanView iQ™ Interconnect Patch Cords – Enhanced – UTP CM Rated

<b>Foot lengths:</b>	PVQ-EUSDC3BU*
<b>Meter lengths:</b>	PVQ-EUSDC1MBU^

### PanView iQ™ Interconnect Patch Cords – Enhanced – STP CM/LSZH Rated

<b>Foot lengths:</b>	PVQ-ES6X3BU*
<b>Meter lengths:</b>	PVQ-ES6X1MBU^

### PanView iQ™ Interconnect Patch Cords – CM Rated

<b>Foot lengths:</b>	PVQ-BIU6C3BU*
<b>Meter lengths:</b>	PVQ-BIU6C1MBU**

### PanView iQ™ Interconnect Patch Cords – LSZH Rated

<b>Meter lengths:</b>	PVQ-BIU6L1MBU^
-----------------------	----------------

### PanView iQ™ Patch Panels

<b>Modular, intelligent, blank 24-port</b>	
<b>Flat unshielded:</b>	PVQ-MIQPU24
<b>Angled unshielded:</b>	PVQ-MIQAPU24
<b>Flat shielded:</b>	PVQ-MIQPS24
<b>Angled shielded:</b>	PVQ-MIQAPS24

### PanView iQ™ Intelligence Modules

<b>Panel manager (PM):</b>	PVQ-PM
<b>Expansion module (EM):</b>	PVQ-EM
NOTE: PM requires PanViewIQ™ Power Supply (not included).	

### PanView iQ™ Power Supply

<b>12 volt power supply</b>	
<b>(North America):</b>	PVQ-PS12VDC-S
<b>(Europe):</b>	PVQ-PS12VDC-E
<b>(UK):</b>	PVQ-PS12VDC-U
<b>(Japan):</b>	PVQ-PS12VDC-J
<b>(China):</b>	PVQ-PS12VDC-C

### PIM™ Software Platform and Modules

<b>Base functionality module:</b>	PIM-BASE
<b>Connectivity management module:</b>	PIM-CONNECT‡
<b>Maintenance, support and warranty agreement:</b>	PIM-CAMA

\*For standard lengths other than 3 feet (5, 7, 10, 14, or 20) change the length designation in the part number to the desired length. For standard cable color other than BU (Blue), replace suffix BU with WH (White) at the end of the part number. For example, the part number for a white, 5-foot UTP patch cord is PVQ-EUSDC5WH. For example, the part number for a white, 5-foot STP patch cord is PVQ-ES6X5WH.

^For standard lengths other than 1 meter (2, 3, 5 or 10) change the length designation in the part number to the desired length. For standard cable color other than BU (Blue), replace suffix BU with WH (White) at the end of the part number. For example, the part number for a white 2 meter UTP patch cord is PVQ-ES6X2MWH. For example, the part number for a white 2 meter STP patch cord is PVQ-ES6X2MWH.

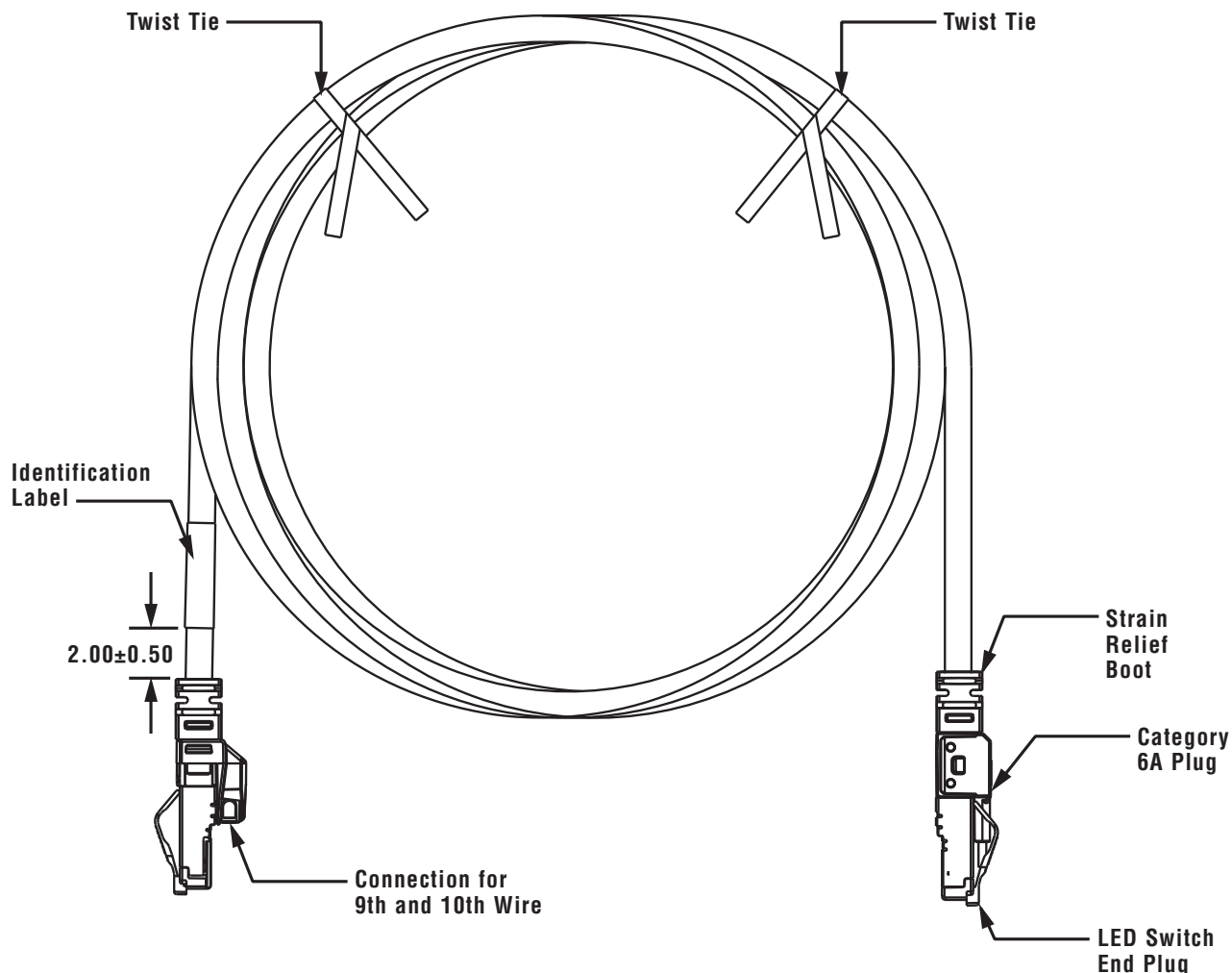
\*\*For standard lengths other than 3 feet (5, 7, 10, 14, or 20) change the length designation in part number to the desired length. For standard cable colors other than BU (Blue) replace suffix BU with GR (Green) at the end of the part number. For example, the part number for a green 10-foot CM patch cord is PVQ-BIU6C10GR.

\*\*\*For standard lengths other than 1 meter (2, 3, 5, or 10) change the length designation in part number to the desired length. For standard cable colors other than BU (Blue) replace suffix BU with GR (Green) at the end of the part number. For example, the part number for a green 10-meter CM patch cord is PVQ-BIU6C10MGR.

^^For standard lengths other than 1 meter (2, 3, 5, or 10) change the length designation in part number to the desired length. For standard cable colors other than BU (Blue), replace suffix BU with WH (White) at the end of the part number. For example, the part number for a white 10-meter, LSZH patch cord is PVQ-BIU6L10MWH.

‡To order this module, add the appropriate letter to the end of the part number, based on the size of the installation: -S (<50 racks); -M (50-199 racks); -L (200-399 racks); -X (400+ racks). For example, the part number for the Connectivity Management Module for 250 racks is PIM-CONNECT-L.

# PanView iQ™ (PViQ™) Interconnect Patch Cords – Enhanced



**T568B Wiring Scheme**

Plug Position	Cable Wire
1	White/Orange
2	Orange
3	White/Green
4	Blue
5	White/Blue
6	Green
7	White/Brown
8	Brown

## WORLDWIDE SUBSIDIARIES AND SALES OFFICES

PANDUIT CANADA  
Markham, Ontario  
cs-cdn@panduit.com  
Phone: 800.777.3300

PANDUIT EUROPE LTD.  
London, UK  
cs-emea@panduit.com  
Phone: 44.20.8601.7200

PANDUIT SINGAPORE PTE. LTD.  
Republic of Singapore  
cs-ap@panduit.com  
Phone: 65.6305.7575

PANDUIT JAPAN  
Tokyo, Japan  
cs-japan@panduit.com  
Phone: 81.3.6863.6000

PANDUIT LATIN AMERICA  
Guadalajara, Mexico  
cs-la@panduit.com  
Phone: 52.33.3777.6000

PANDUIT AUSTRALIA PTY. LTD.  
Victoria, Australia  
cs-aus@panduit.com  
Phone: 61.3.9794.9020

For a copy of Panduit product warranties, log on to [www.panduit.com/warranty](http://www.panduit.com/warranty)

For more information

Visit us at [www.panduit.com](http://www.panduit.com)

Contact Customer Service by email: [cs@panduit.com](mailto:cs@panduit.com)  
or by phone: 800.777.3300

**PANDUIT**®

©2013 Panduit Corp.  
ALL RIGHTS RESERVED.  
PVSP92-WW-ENG  
10/2013

## X-ON Electronics

Largest Supplier of Electrical and Electronic Components

*Click to view similar products for [Ethernet Cables / Networking Cables](#) category:*

*Click to view products by [Panduit](#) manufacturer:*

Other Similar products are found below :

[73-6670-7](#) [73-6680-15](#) [73-7797-25](#) [MCJB2-10P6Q7-120](#) [84909-0204](#) [1200700174](#) [1200860368](#) [E16A06002M030](#) [E200102-009-S1](#)  
[AX105346-EW](#) [MT14-187L](#) [17-103530](#) [ERWPAB3002M005](#) [190-038045-01](#) [NK5EPC18RDY](#) [NK5EPC18VLY](#) [NK5EPC18YLY](#)  
[NK5EPC1GRY](#) [NK5EPC4Y](#) [NK5EPC6YLY](#) [NK5EPC8BLY](#) [NK5EPC9YLY](#) [1969343-6](#) [C501100010](#) [C501106002](#) [C501106007](#)  
[C501106015](#) [C501106025](#) [C601102010](#) [C601104010](#) [C601106007](#) [C601106015](#) [2142758-2](#) [2168427-2](#) [CAT1106007](#) [21949-1](#) [2J1866A](#)  
[RJF SFTP 5E 0500](#) [AX100351](#) [MN14CEC/ST](#) [C501100015](#) [C501106004](#) [C501106010](#) [C5F1108007](#) [C601104004](#) [C601106004](#)  
[CA21106004](#) [CA21106010](#) [CA21106015](#) [CA21109007](#)