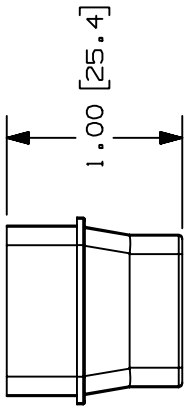
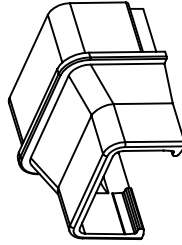
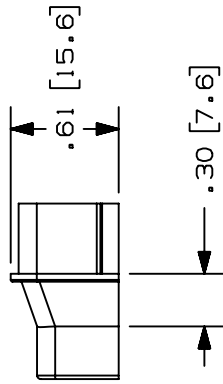
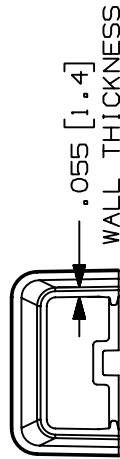


THIS COPY IS PROVIDED ON A RESTRICTED BASIS AND IS NOT TO BE USED IN ANY WAY DETRIMENTAL TO THE INTERESTS OF PANDUIT CORP.

PANDUIT P/N	WEIGHT
RFX53-X	.061 LB/10 PCS. (27.5 G/10 PCS.)



- NOTES:
- SEE CURRENT CATALOG FOR ADDITIONAL PART SUFFIXES TO INDICATE COLOR AND OR PACKAGE QUANTITY.
 - FOR USE IN POWER CABLING APPLICATIONS UP TO 600V OR FOR CATEGORY 5, FIBER OPTIC AND OTHER LOW VOLTAGE APPLICATIONS REQUIRING TAMPER-RESISTANCE.
 - REDUCER FITTING IS USED TO REDUCE PANDUIT'S LD5 PROFILE FITTINGS TO PANDUIT'S LD3 PROFILE RACEWAYS.
 - DIMENSIONS IN PARENTHESIS ARE IN METRIC.



CAO FILENAME/LAYERS D35541DB_RFX53_C_00A.PRT

PANDUIT CORP. TINLEY PARK, ILLINOIS

REDUCER FITTING (RFX53-X)
CUSTOMER DRAWING

UNLESS OTHERWISE SPECIFIED,
DIMENSIONAL TOLERANCES ARE:
(.X) ± (.XXX) ±.005(.3)
(.XX) ±.010(.8) ANGLES ±

UNLESS OTHERWISE SPECIFIED,
ALL DIMENSIONS ARE GIVEN
IN INCHES, THIRD ANGLE PROJECTION.

SCALE FULL

DWG NO.

35541-68

MAT'L: ABS/PC

DRAWN BY RABO

DATE 07-23-97

CHK'D HIW

ECN - R

CUST

SUP

DESCRIPTION

1	08-11-97	RABO	HIW	35541-68	HIW	HIW			
R	07-23-97	RABO	HIW	35541-54	HIW	HIW			
REV	DATE	BY	CHK	ECN	R	CUST	SUP		

DESCRIPTION

CHK

DATE

BY

CHK

ECN

R

CUST

SUP

35541-68

HIW

HIW

HIW

35541-54

HIW

HIW

35541-68

DWG NO.

SIZE A

X-ON Electronics

Largest Supplier of Electrical and Electronic Components

Click to view similar products for [Wire Ducting](#) category:

Click to view products by [Panduit](#) manufacturer:

Other Similar products are found below :

[66200A-10](#) [CVED32VEPG](#) [CVED40VEPG](#) [F512D5-5F140Y](#) [F512D5-5F200Y](#) [F512D5-5F26Y](#) [F512D5-5F30Y](#) [F512D5-5F33Y](#) [F512D5-5F34Y](#) [F512D5-5F45Y](#) [F512D5-5F50Y](#) [F512D5-5F54Y](#) [F512D5-5F66Y](#) [F512D5-5F70Y](#) [F512D5-5F75Y](#) [F512D5-5F90Y](#) [F612D5-5F100Y](#) [F612D5-5F130Y](#) [F612D5-5F50Y](#) [F612D5-5F56Y](#) [F612D5-5F58Y](#) [F6L12D5-5F46](#) [F912D5-5F11Y](#) [F912D5-5F170Y](#) [F912D5-5F175Y](#) [F912D5-5F230Y](#) [F912D5-5F300Y](#) [F912D5-5F55Y](#) [F912D5-5F56Y](#) [F912D5-5F63Y](#) [F912D5-5F6Y](#) [F912D5-5F75Y](#) [F912D5-5F85Y](#) [F912D5-5F86Y](#) [F912D5-5F88Y](#) [F912D5-5F96Y](#) [FAP0047WBLMTP](#) [FAP12WBRDRDDLZ](#) [FAP12WDYLYLDLZ](#) [FAP12WEORORDLZ](#) [FAP6WEORORDLZ](#) [FAP6WFDBDBDLZ](#) [FAP8WEORORDLZ](#) [FCE2UWCL](#) [800A-LB](#) [802A-ECSP](#) [802I-ICSP](#) [FJQADH](#) [FJQFXT](#) [PED10](#)