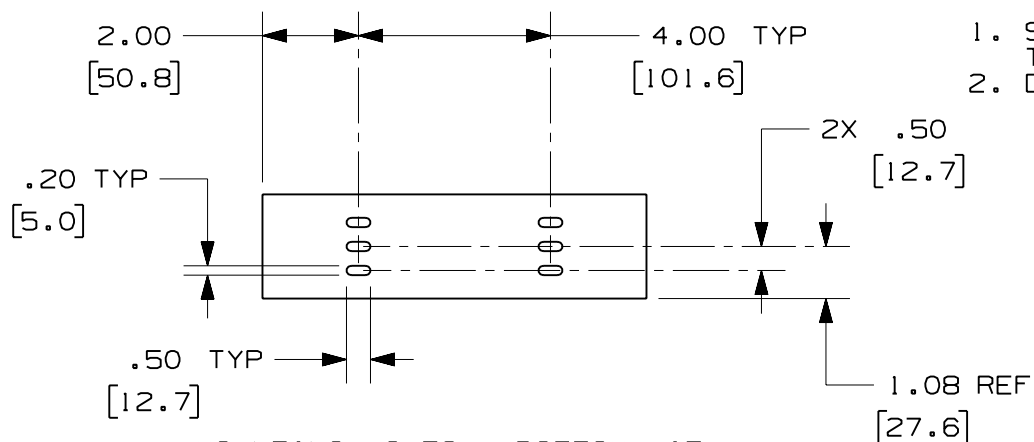


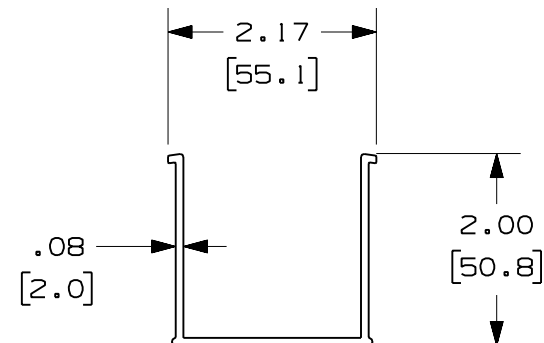
| PANDUIT PART NUMBER | LENGTH | WEIGHT | WEIGHT/LENGTH |
|---------------------------|---------------------------------------|-------------------|-------------------------|
| S2X2**2 (SEE NOTE 1) | 78.74 IN ±.18 IN (2000.0mm ±4.6mm) | 1.84 LB (835g) | 0.28 LB/FT (4.2g/cm) |
| S2X2**6 (SEE NOTE 1) | 72.00 IN ±.18 IN (1828.8mm ±4.6mm) | 1.68 LB (762g) | 0.28 LB/FT (4.2g/cm) |
| S2X2**2NM (SEE NOTE 1) | 78.74 IN ±.18 IN (2000.0mm ±4.6mm) | 2.08 LB (943g) | 0.29 LB/FT (4.4g/cm) |
| S2X2**6NM (SEE NOTE 1) | 72.00 IN ±.18 IN (1828.8mm ±4.6mm) | 1.74 LB (789g) | 0.29 LB/FT (4.4g/cm) |

NOTES:

- SEE CURRENT CATALOG FOR ADDITIONAL PART SUFFIXES TO INDICATE COLOR AND/OR PACKAGE QUANTITY.
- DIMENSIONS IN PARENTHESES ARE IN METRIC.



MOUNTING HOLES - BOTTOM VIEW
(S2X2**2 AND S2X2**6 ONLY)



ENG. REF.: D35245C0_DC_S2X2_00.prt

| | | | |
|--|---------------|---|-----------|
| CAD FILENAME/LAYERS | | S2X2.pdf | |
| PANDUIT CORP TINLEY PARK, ILLINOIS | | | |
| FIBER-DUCT 2x2 SOLID WALL CHANNEL (S2X2**2, S2X2**6, S2X2**2NM, S2X2**6NM) CUSTOMER DRAWING | | | |
| UNLESS OTHERWISE SPECIFIED, DIMENSIONAL TOLERANCES ARE: (.X) ± (.XXX) ± (.XX) ±.03 (0.8) ANGLES ± | | UNLESS OTHERWISE SPECIFIED, ALL DIMENSIONS ARE GIVEN IN INCHES, THIRD ANGLE PROJECTION. | |
| DRAWN BY MSO | MAT'L: PVC | SCALE NONE | DWG A |
| DATE 1-5-07 | | DRAWING NO. 35245-41 | SIZE A |
| CHK'D RN | | | |

| REV | DATE | BY | CHK | DESCRIPTION | ECN | R | CUST | SUP | GMBH |
|-----|--------|-----|-----|------------------------|----------|----|------|-----|------|
| R | 1-5-07 | MSO | RN | RELEASED TO PRODUCTION | 35245-41 | RN | RN | | |

X-ON Electronics

Largest Supplier of Electrical and Electronic Components

Click to view similar products for [Wire Ducting & Raceways](#) category:

Click to view products by [Panduit](#) manufacturer:

Other Similar products are found below :

[800A-LB](#) [801I-LSP](#) [802A-ECSP](#) [802I-ICSP](#) [923223-000](#) [PRAF6WH-X](#) [A0405538](#) [1301150342](#) [1301160034](#) [1301170070](#) [1301180011](#)
[1301230083](#) [1301230153](#) [1301240273](#) [1301250006](#) [1302261238](#) [1302261321](#) [1302262552](#) [1302263103](#) [1302263178](#) [1302263259](#)
[1302263816](#) [1302263860](#) [1302264375](#) [1302264390](#) [1301150343](#) [1301160030](#) [1301170050](#) [1301170051](#) [1301170061](#) [1301180013](#)
[1301230086](#) [1301230130](#) [1301240054](#) [1302260055](#) [1302260376](#) [1302261343](#) [1302261344](#) [1302262674](#) [1302263095](#) [1302263166](#)
[1302263209](#) [1302263513](#) [1302263851](#) [1302263870](#) [1302264137](#) [1302264218](#) [DD1/J](#) [AX102007](#) [AX102411](#)