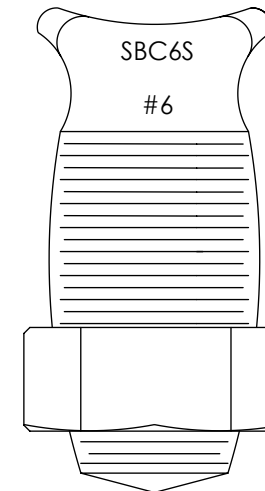
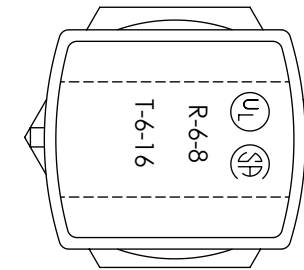
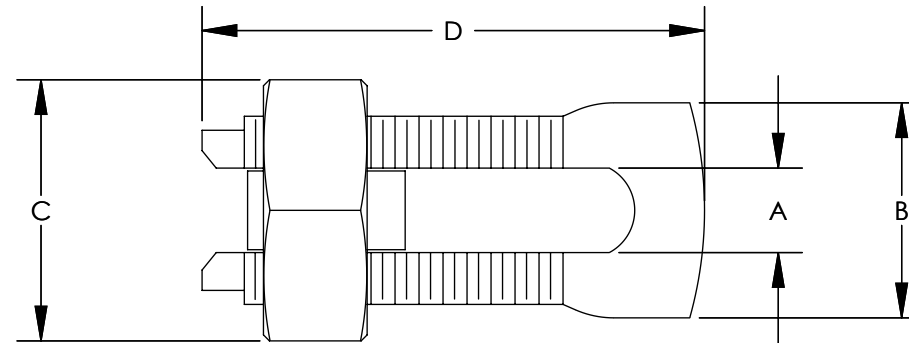


THIS COPY IS PROVIDED ON A RESTRICTED BASIS AND IS NOT TO BE USED IN ANY WAY DETRIMENTAL TO THE INTERESTS OF PANDUIT CORP.

NOTES:

1. HIGH STRENGTH ELECTROLYTIC COPPER HIGHLY RESISTANT TO CORROSION AND SEASON CRACKING.
2. FOR COPPER AND COPPERWELD WIRES ONLY.
3. \*CONNECTOR CAN BE USED WITH 3 WIRES, BUT IS NOT CSA APPROVED WITH 3 WIRES.
4. \*\*THE CONDUCTOR SIZES SHOWN ARE FOR EQUAL RUN AND TAP COMBINATIONS FOR BOTH SOLID AND STRANDED UNLESS OTHERWISE LISTED.
5. PARTS ARE UL LISTED TO UL467 AND UL486. PARTS ARE CSA CERTIFIED.

CATALOG NUMBER	COPPER CONDUCTOR		MIN. TAP WITH ONE MAX. RUN	APPROXIMATE DIMENSIONS - INCHES				INSTALLATION TORQUE
	RANGE OF EQUAL RUN & TAP			A	B	C	D	
	MIN.	MAX.						
SBC8-C	10 STR	8 STR	16 STR	0.14	0.39	0.55	0.86	80
SBC6S-C	8 STR	6 STR	16 STR	0.16	0.41	0.62	0.95	165
*SBC6SL-C	8 STR	6 STR	16 STR	0.17	0.41	0.63	1.10	165
SBC4S-C	8 STR	6 STR	14 STR	0.21	0.45	0.69	0.98	165
*SBC4SL-C	8 STR	6 STR	14 STR	0.22	0.45	0.69	1.30	165
SBC3-C	8 STR	4 STR	14 STR	0.27	0.58	0.81	1.16	275
SBC2-C	6 STR	2 STR	14 STR	0.31	0.59	0.86	1.23	275
SBC1/0-L	4 STR	1/0 STR	14 STR	0.37	0.75	0.93	1.55	385
SBC2/0-Q	2 STR	2/0 STR	14 STR	0.42	0.79	1.05	1.72	385
SBC3/0-Q	1 STR	3/0 STR	8 STR	0.53	0.95	1.24	2.07	500
SBC250-Q	1 STR	250 kcmil	8 STR	0.58	1.03	1.36	2.09	650
SBC350-1	2/0 STR	350 kcmil	1/0 STR	0.70	1.16	1.48	2.42	650
SBC500-1	300 kcmil	500 kcmil	2/0 STR	0.81	1.33	1.74	2.83	825



REV	DATE	BY	CHK	APR	DESCRIPTION	ECN
07	10/15	JHNU	JHNU	RGB	REVISED MARKING LOCATION ADDED NOTE TO SPECIFY PARTS ARE UL 486 AND UL467	N10850BM-C41512
06	10/13	JHNU	JHNU	RGB	REVISED MAX RUN & TAP FOR SBC6S-C: 6 STR WAS 6 SOL	N10850BM-C41512
05	3/13	JHNU	JHNU	RGB	REVISED TITLE BLOCK	N10850BM-C41512

TITLE <b>SBC SERIES - COPPER SPLIT BOLT CONNECTOR CUSTOMER DRAWING</b>			
ITEM REVISION NAME	N10850BM-C41512/07		
DATASET FILE NAME	C41512/07.SLDDRW		
UNLESS OTHERWISE SPECIFIED, DIMENSIONAL TOLERANCES ARE: IN [mm]			
.X ±	.XXX ±	THIRD ANGLE PROJECTION	
.XX ±	ANGLES ±		
DRAWN BY JHNU		DATE 3/06	CHK JAC
SCALE NONE		SHEET 1 OF 1	



MATERIAL  
SEE NOTES

DRAWING NUMBER  
C41512

SIZE  
B

## X-ON Electronics

Largest Supplier of Electrical and Electronic Components

*Click to view similar products for [Cable Mounting & Accessories](#) category:*

*Click to view products by [Panduit](#) manufacturer:*

Other Similar products are found below :

[582603-1](#) [009333-000](#) [727844N003](#) [747](#) [809090N001](#) [843188-000](#) [8666](#) [967279N002](#) [DB-11](#) [1300840039](#) [1300900096](#) [1301800416](#)  
[1302264450](#) [1300830184](#) [1300830729](#) [1300900039](#) [1301580036](#) [1301850553](#) [1301860939](#) [1302000074](#) [1302261315](#) [1302264431](#)  
[1337706-2](#) [APA18-AK](#) [1724](#) [1-787307-1](#) [185491N001](#) [1868](#) [HP-6N](#) [C-202-C](#) [202C221-13-0](#) [CA7308-000](#) [8S23-75FR-CS8184](#) [2684](#) [9648](#)  
[3089](#) [988382-000](#) [A72821-000](#) [AA401](#) [173506-000](#) [1823](#) [202C292-13-0](#) [202C302-13-0](#) [2109](#) [300625](#) [3330](#) [3412](#) [356247-1](#) [M9142](#)  
[M9143](#)