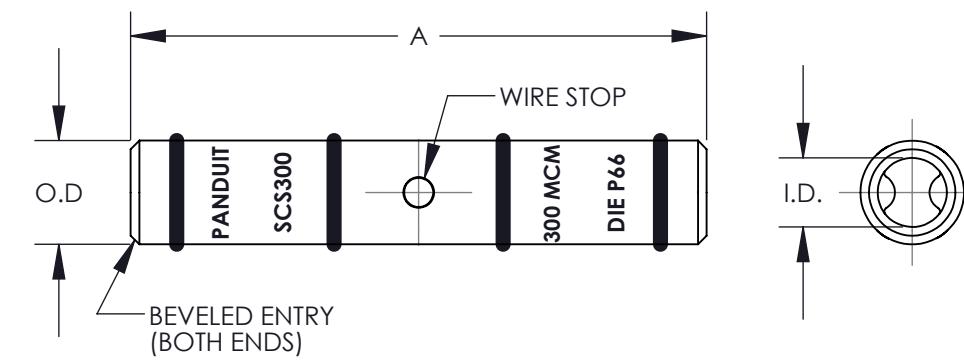
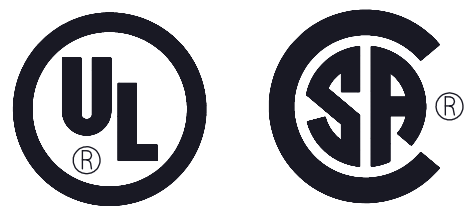


PANDUIT PART NUMBER	COPPER CONDUCTOR SIZE	EXPANDED WIRE RANGE***	BARREL		OVERALL LENGTH "A" +/- .12	WIRE STRIP LENGTH	PLATING	PANDUIT COLOR CODE ON BARREL	PANDUIT DIE INDEX NUMBER ON BARREL	ALTERNATE INDUSTRY DIE INDEX NUMBER ON BARREL
			I.D. +/- .01	O.D. +/- .01						
SCS300-X	300 kcmil	#2/0 - 300 kcmil	0.65	0.81	2.25	1-1/16	ELECTRO-TIN	WHITE	P66	(17)
SCS300UT-X							N/A	N/A	N/A	N/A
SCS350-X	350 kcmil	#3/0 - 350 kcmil	0.70	0.87	2.37	1-1/8	ELECTRO-TIN	RED	P71	(18)
SCS350UT-X							N/A	N/A	N/A	N/A
SCS400-6	400 kcmil	#4/0 - 400 kcmil	0.76	0.95	2.50	1-3/16	ELECTRO-TIN	BLUE	P76	(19)
SCS400UT-6							N/A	N/A	N/A	N/A
SCS500-6	500 kcmil	#4/0 - 500 kcmil	0.83	1.05	2.87	1-3/8	ELECTRO-TIN	BROWN	P87	(20)
SCS500UT-6							N/A	N/A	N/A	N/A
SCS600-6	600 kcmil	250 - 600 kcmil	0.92	1.18	2.87	1-3/8	ELECTRO-TIN	GREEN	P94	(22)
SCS600UT-6							N/A	N/A	N/A	N/A
SCS750-6	750 kcmil	500 - 750 kcmil	1.03	1.29	3.37	1-5/8	ELECTRO-TIN	BLACK	P106	(24)
SCS750UT-6							N/A	N/A	N/A	N/A
SCS800-6	800 kcmil	----	1.05	1.35	3.37	1-7/8	ELECTRO-TIN	ORANGE	P107	(25)
SCS1000-3	1000 kcmil	----	1.17	1.50	3.87	1-7/8	ELECTRO-TIN	WHITE	P125	(27)
SCS1000UT-3							N/A	N/A	N/A	N/A



NOTES:

- MATERIAL: HIGH CONDUCTIVITY SEAMLESS COPPER TUBING
- UL LISTED WITH CODE COPPER CONDUCTORS FOR APPLICATIONS UP TO 35KV, FILE E52164
NOTE: SCS800-6 IS NOT UL LISTED
- CONSULT CABLE MANUFACTURER FOR VOLTAGE STREE RELIEF INSTRUCTIONS WITH APPLICATIONS GREATER THAN 2000 VOLTS
- CSA CERTIFIED WITH COPPER CODE CONDUCTORS FOR APPLICATIONS UP TO 35 KV FILE LR31212.
NOTE: SCS800-6 IS NOT CSA CERTIFIED
- FOR USE WITH COPPER STRANDED CLASS B COMPACT, COMPRESSED, OR CONCENTRIC, CLASS C CONCENTRIC WIRE ONLY.



					TITLE		SCS STANDARD BARREL 300 kcmil - 1000 kcmil COPPER SPLICES	
					CUSTOMER DRAWING			
					ITEM REVISION NAME		N41135BB/09	
					DATASET FILE NAME		C41135/09.SLDDRW	
					UNLESS OTHERWISE SPECIFIED, DIMENSIONAL TOLERANCES ARE: IN [mm]		MATERIAL	
					.X ±		.XXX ±	
					.XX ±		ANGLES ±	
					THIRD ANGLE PROJECTION		DRAWING NUMBER	
					C41135		C41135	
					DRAWN BY		DATE	
					PWS		3/93	
					CHK		SCALE	
					GRM		N/A	
					ECN		SHEET 1 OF 1	
					SIZE		B	

09 7/18 JHNU JHNU RGB REVISED UP PART SUFFIX TO UT
REVISED NOTES TO SPECIFY SCS800-6 IS NOT UL LISTED/CSA CERTIFIED
REVISED TITLE BLOCK

REV	DATE	BY	CHK	APR	DESCRIPTION	ECN
09	7/18	JHNU	JHNU	RGB	REVISED UP PART SUFFIX TO UT REVISED NOTES TO SPECIFY SCS800-6 IS NOT UL LISTED/CSA CERTIFIED REVISED TITLE BLOCK	N41135BB-C41135

X-ON Electronics

Largest Supplier of Electrical and Electronic Components

Click to view similar products for [Terminals](#) category:

Click to view products by [Panduit](#) manufacturer:

Other Similar products are found below :

[00-054007-01074-6](#) [00-054007-70206-1](#) [00-054007-70210-8](#) [00-054007-70217-7](#) [00-054007-70226-9](#) [00-054007-70228-3](#) [00-054007-70248-1](#) [00-054007-70256-6](#) [00-054007-70301-3](#) [00-054007-70316-7](#) [0-0320562-0](#) [00-054007-49560-4](#) [00-054007-70209-2](#) [00-054007-70225-2](#) [00-054007-70227-6](#) [00-054007-70231-3](#) [00-054007-70241-2](#) [00-054007-70242-9](#) [00-054007-70244-3](#) [00-054007-70246-7](#) [00-054007-70263-4](#) [00-054007-70288-7](#) [00-054007-70290-0](#) [00-054007-70300-6](#) [00-054007-70304-4](#) [01-2065-1-0216](#) [01-2900-1-04412](#) [00581P0075](#) [600TS-10](#) [60205-1](#) [604200-1](#) [605601-1](#) [60598-1-CUT-TAPE](#) [61314-6-C](#) [61810-3](#) [61-S](#) [61-SN](#) [626-0194](#) [62-NBM-A](#) [62-SN](#) [62-SP](#) [63-S](#) [640179-1](#) [M55155/059I03](#) [M55155/079C01](#) [M55155/099H02](#) [M55155/109H01](#) [M55155/109H02](#) [M55155/12XH05](#) [M55155/16XH02](#)