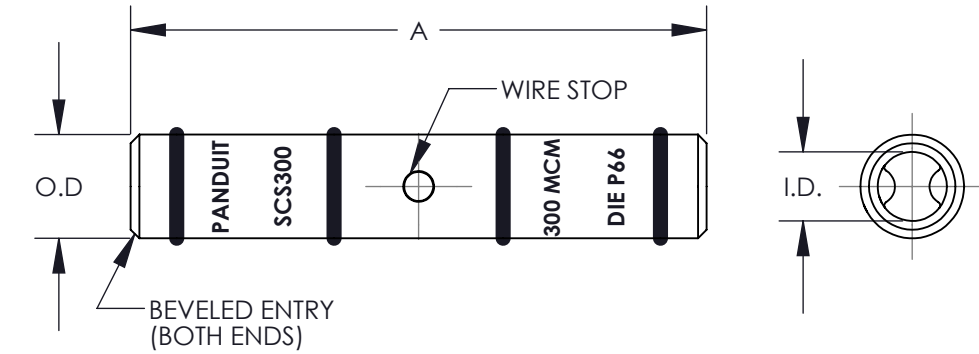


THIS COPY IS PROVIDED ON A RESTRICTED BASIS AND IS NOT TO BE USED IN ANY WAY DETRIMENTAL TO THE INTERESTS OF PANDUIT CORP.

PANDUIT PART NUMBER	COPPER CONDUCTOR SIZE	EXPANDED WIRE RANGE***	BARREL		OVERALL LENGTH "A" +/- .12	WIRE STRIP LENGTH	PANDUIT CRIMP TOOL PART NUMBERS			
			I.D. +/- .01	O.D. +/- .01			CT-720	CT-920, CT-920CH, CT-930, CT-930CH, CT-940CH*, CT-2920, CT-2940*	CT-2001	CT-2950**, CT-2980, CT-980, CT-980CH
SCS300-X	300 kcmil	#2/0 - 300 kcmil	0.65	0.81	2.25	1-1/16	CD-720-4 WHITE P66 2 CRIMPS	CD-920-300 WHITE P66 2 CRIMPS	CD-2001-300 WHITE P66 2 CRIMPS	STD 2 CRIMPS
SCS350-X	350 kcmil	#3/0 - 350 kcmil	0.70	0.87	2.37	1-1/8	CD-720-5 RED P71 2 CRIMPS	CD-920-350 RED P71 2 CRIMPS	CD-2001-350 RED P71 2 CRIMPS	STD 2 CRIMPS
SCS350UP-X										
SCS400-6	400 kcmil	#4/0 - 400 kcmil	0.76	0.95	2.50	1-3/16	CD-720-6 BLUE P76 2 CRIMPS	CD-920-400 BLUE P76 2 CRIMPS	CD-2001-400 BLUE P76 2 CRIMPS	STD 2 CRIMPS
SCS400UP-6										
SCS500-6	500 kcmil	#4/0 - 500 kcmil	0.83	1.05	2.87	1-3/8	CD-720-7 BROWN P87 2 CRIMPS	CD-920-500 BROWN P87 2 CRIMPS	CD-2001-500 BROWN P87 2 CRIMPS	STD 2 CRIMPS
SCS500UP-6										
SCS600-6	600 kcmil	250 - 600 kcmil	0.92	1.18	2.87	1-3/8	---	CD-920-600 GREEN P94 2 CRIMPS	---	STD 2 CRIMPS
SCS600UP-6										
SCS750-6	750 kcmil	500 - 750 kcmil	1.03	1.29	3.37	1-5/8	---	CD-920-750 CD-940-750*** BLACK P106 2 CRIMPS	---	STD 2 CRIMPS
SCS750UP-6										
SCS800-6	800 kcmil	---	1.05	1.35	3.37	1-7/8	---	CD-940-800*** ORANGE P107 2 CRIMPS	---	---
SCS1000-3	1000 kcmil	---	1.17	1.50	3.87	1-7/8	---	CD-940-1000*** WHITE P125 2 CRIMPS	---	---
SCS1000UP-3										



NOTES:

1. MATERIAL: HIGH CONDUCTIVITY SEAMLESS COPPER TUBING
2. ELECTRO TIN PLATED  
**NOTE: SCS350UP, SCS400UP, SCS500UP, SCS600UP, SCS750UP, SCS1000UP ARE NOT PLATED**
3. BARREL COLOR CODED WITH DIE SET INDEX NUMBER  
**NOTE: PLATED PARTS ONLY**
4. UL LISTED WITH CODE COPPER CONDUCTORS FOR APPLICATIONS UP TO 35KV, FILE E52164
5. CONSULT CABLE MANUFACTURER FOR VOLTAGE STREE RELIEF INSTRUCTIONS WITH APPLICATIONS GREATER THAN 2000 VOLTS
6. CSA CERTIFIED FOR APPLICATIONS UP TO 600V, FILE LR31212
7. FOR USE WITH COPPER CABLES ONLY

\* CD-920 DIES CAN BE USED WITH CT-940CH AND CT-2940 TOOL WITH CD-940-DA DIE ADAPTER  
 \*\* MAX SIZE 500 MCM  
 \*\*\* WITH CT-980, CT-980CH, CT-2950 7 CT-2980

08	6/13	JHNU	RGB	ADDED SCS800 TO DRAWING	N41135BB-C41135	RGB	RGB
07	6/12	JHNU	RGB	REMOVED SCS800 FROM DRAWING	N41135BB-C41135	RGB	RGB
06	2/12	JHNU	RGB	ADDED SCS800 TO DRAWING	N41135BB-C41135	RGB	RGB
05	8/11	JHNU	RGB	ADDED SCS350UP, SCS400UP, SCS500UP, SCS600UP, SCS750UP, SCS1000UP, CONVERTED DWG TO SOLIDWORKS	N41135BB-C41135	RGB	RGB
04	10/02	SAC		REMOVED SCS800-6			
03	6/02	SAB	JAC	ADDED SCS800-6, UPDATED SCS750-6 & SCS1000-3 TOOL INFO ALL kcmils WERE MCM	10252	JAC	LM
02	4/01	BDK	SKB	ADDED LETTER "P" TO DIE INDEX NUMBER, ADDED CT-2980, CT-980, & CT-980CH, EXPANDED WIRE RANGE	09383	JAC	RM
01	2/94	PWS	JCJ	FILESPEC WAS C41105, DWG WAS C41105	02060	LA	RM
00	3/93	PWS	GRM	DRAWING RELEASED	01415		KRS
REV	DATE	BY	CHK	DESCRIPTION	ECN	-R	SUP

**PANDUIT CORP. TINLEY PARK, ILLINOIS**

SCS STANDARD BARREL #300-#1000 SPLICES  
CUSTOMER DRAWING

UNLESS OTHERWISE SPECIFIED  
DIMENSIONAL TOLERANCES ARE:  
(.X) ± (.XXX) ±  
(.XX) ± ANGLES ±

UNLESS OTHERWISE SPECIFIED,  
ALL DIMENSIONS ARE GIVEN IN  
INCHES, THIRD ANGLE PROJECTION

DRAWN BY PWS  
DATE 3/93  
CHK'D GRM

MAT'L:  
SCALE NONE  
DRAWING NO / CAD FILE C41135\_08  
DWG B SIZE



## X-ON Electronics

Largest Supplier of Electrical and Electronic Components

*Click to view similar products for [Terminals](#) category:*

*Click to view products by [Panduit](#) manufacturer:*

Other Similar products are found below :

[00-054007-01074-6](#) [00-054007-70206-1](#) [00-054007-70210-8](#) [00-054007-70217-7](#) [00-054007-70226-9](#) [00-054007-70228-3](#) [00-054007-70248-1](#) [00-054007-70256-6](#) [00-054007-70301-3](#) [00-054007-70316-7](#) [0-0320562-0](#) [00-054007-49560-4](#) [00-054007-70209-2](#) [00-054007-70225-2](#) [00-054007-70227-6](#) [00-054007-70231-3](#) [00-054007-70241-2](#) [00-054007-70242-9](#) [00-054007-70244-3](#) [00-054007-70246-7](#) [00-054007-70263-4](#) [00-054007-70288-7](#) [00-054007-70290-0](#) [00-054007-70300-6](#) [00-054007-70304-4](#) [01-2065-1-0216](#) [01-2900-1-04412](#) [00581P0075](#) [600TS-10](#) [60205-1](#) [604200-1](#) [605601-1](#) [60598-1-CUT-TAPE](#) [61314-6-C](#) [61810-3](#) [61-S](#) [61-SN](#) [626-0194](#) [62-NBM-A](#) [62-SN](#) [62-SP](#) [63-S](#) [640179-1](#) [M55155/059I03](#) [M55155/079C01](#) [M55155/099H02](#) [M55155/109H01](#) [M55155/109H02](#) [M55155/12XH05](#) [M55155/16XH02](#)