



Power & Grounding Expansion Catalog

PANDUIT®
infrastructure for a connected world

We're expanding our offering so you can expand your business

Panduit® is committed to providing our customers a comprehensive solution and that means we must continually improve and expand our product offering so that you can meet and exceed all of your client's expectations.

We are expanding our existing power and grounding offering with more sizes and more choices so that you can meet all of your customer's demands, no matter the requirement.

Of course, we're not just focusing on an expansion of our current product line, but we are also going above and beyond to introduce products we've never offered before. You've told us what you need and we've listened.

Look for our new product offerings as well as product line expansions over the course of this catalog. This is an ongoing commitment on our part, so be sure to check back often for the latest additions to our ever-expanding product line.

We are your partner in support of all of your power and grounding needs.



Silicon Bronze Hardware	4
Stainless Steel Hardware	6
Uninsulated Butt Splice (Type SCSX)	8
Code Conductor, One-Hole, Long Barrel Lug (Type LCB)	9
Code Conductor, One-Hole, Long Barrel with Window Lug (Type LCB-W)	10
Flex Conductor, One-Hole, Standard Barrel with Window, Narrow Tongue Lug (Type LCAXN)	11
Metric Conductor, One-Hole, Standard Barrel with Window Lug (Type LCMA)	13
Metric Conductor, Two-Hole, Standard Barrel with Window Lug (Type LCMD)	15
Rigid and Flexible Stranded Metric Conductor, One-Hole, Long Barrel Lug, No Window (Type LCMB)	16
Rigid and Flexible Stranded Metric Conductor, Two-Hole, Long Barrel Lug, No Window (Type LCMC)	17

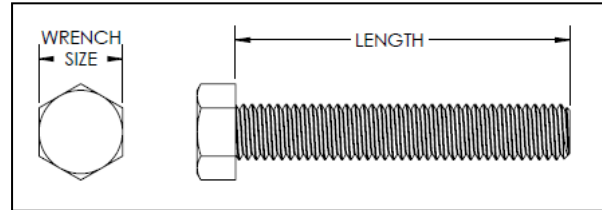
Silicon Bronze is an excellent choice for electrical connections due to its high-strength, toughness, and corrosion resistance. It is also non-magnetic and free from galvanic action when in contact with copper. All Panduit silicon bronze hardware is certified as premium alloy 651 or 655 except for internal tooth lockwashers which use phosphorous bronze for its increased elasticity benefits.

Proper installation torque is essential to ensure a high conductivity connection that will not loosen from vibration.

Thread Size (UNC)	Recommended Torque (inch-pounds)	Wrench Size (SAE)
1/4-20	80	7/16
5/16-18	180	1/2
3/8-16	240	9/16
7/16-14	350	5/8 (bolt) 11/16 (nut)
1/2-13	480	3/4
5/8-11	660	15/16

Hex Bolts

- Fully threaded to work in a range of applications
- Complies with ANSI/ASME B18.2.1 dimensions
- United National Coarse Class 2B thread fit

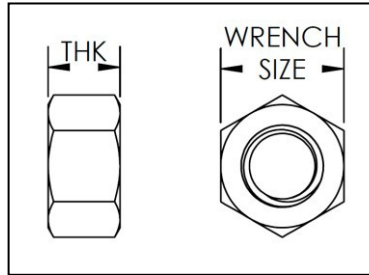


Part Number	Thread Size	Length (inches)	Box Qty
SBBOLT2550-C	1/4-20	1/2	100
SBBOLT2562-C	1/4-20	5/8	100
SBBOLT2575-C	1/4-20	3/4	100
SBBOLT25100-C	1/4-20	1	100
SBBOLT25125-C	1/4-20	1 1/4	100
SBBOLT25150-C	1/4-20	1 1/2	100
SBBOLT25200-C	1/4-20	2	100
SBBOLT25250-C	1/4-20	2 1/2	100
SBBOLT25300-C	1/4-20	3	100
SBBOLT3150-C	5/16-18	1/2	100
SBBOLT3162-C	5/16-18	5/8	100
SBBOLT3175-C	5/16-18	3/4	100
SBBOLT31100-C	5/16-18	1	100
SBBOLT31125-C	5/16-18	1 1/4	100
SBBOLT31150-C	5/16-18	1 1/2	100
SBBOLT31175-C	5/16-18	1 3/4	100
SBBOLT31200-C	5/16-18	2	100
SBBOLT31250-C	5/16-18	2 1/2	100
SBBOLT31300-C	5/16-18	3	100
SBBOLT3850-C	3/8-16	1/2	100
SBBOLT3862-C	3/8-16	5/8	100
SBBOLT3875-C	3/8-16	3/4	100
SBBOLT38100-C	3/8-16	1	100
SBBOLT38125-C	3/8-16	1 1/4	100
SBBOLT38150-C	3/8-16	1 1/2	100

Part Number	Thread Size	Length (inches)	Box Qty
SBBOLT38175-C	3/8-16	1 3/4	100
SBBOLT38200-C	3/8-16	2	100
SBBOLT38250-C	3/8-16	2 1/2	100
SBBOLT38300-C	3/8-16	3	100
SBBOLT44150-C	7/16-14	1 1/2	100
SBBOLT44200-C	7/16-14	2	100
SBBOLT5050-C	1/2-13	1/2	100
SBBOLT5062-C	1/2-13	5/8	100
SBBOLT5075-C	1/2-13	3/4	100
SBBOLT50100-C	1/2-13	1	100
SBBOLT50125-C	1/2-13	1 1/4	100
SBBOLT50150-C	1/2-13	1 1/2	100
SBBOLT50175-C	1/2-13	1 3/4	100
SBBOLT50200-C	1/2-13	2	100
SBBOLT50250-C	1/2-13	2 1/2	100
SBBOLT50300-L	1/2-13	3	50
SBBOLT6250-C	5/8-11	1/2	100
SBBOLT6262-C	5/8-11	5/8	100
SBBOLT62100-C	5/8-11	1	100
SBBOLT62125-C	5/8-11	1 1/4	100
SBBOLT62150-L	5/8-11	1 1/2	50
SBBOLT62200-L	5/8-11	2	50
SBBOLT62250-L	5/8-11	2 1/2	50
SBBOLT62300-L	5/8-11	3	50

Hex Nuts

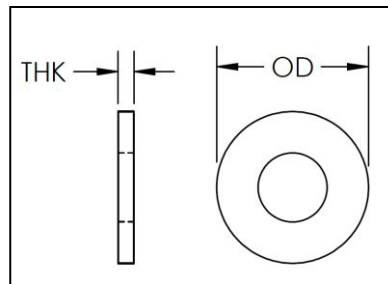
- Complies with ANSI/ASME B18.2.2 dimensions
- United National Coarse Class 2B thread fit



Part Number	Thread Size	THK (inches)	Box Qty
SBNUT25-C	1/4-20	7/32	100
SBNUT31-C	5/16-18	17/64	100
SBNUT38-C	3/8-16	21/64	100
SBNUT44-C	7/16-14	3/8	100
SBNUT50-C	1/2-13	7/16	100
SBNUT62-C	5/8-11	35/64	100

Flat Washers

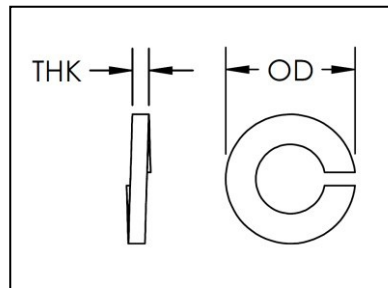
- Complies with ANSI/ASME B18.22.1 Type A narrow dimensions (SAE)



Part Number	OD (inches)	THK (inches)	Box Qty
SBFW25-C	5/8	.065	100
SBFW31-C	11/16	.065	100
SBFW38-C	13/16	.065	100
SBFW44-C	59/64	.065	100
SBFW50-C	1 1/16	.095	100
SBFW62-C	1 5/16	.095	100

Split Lockwashers

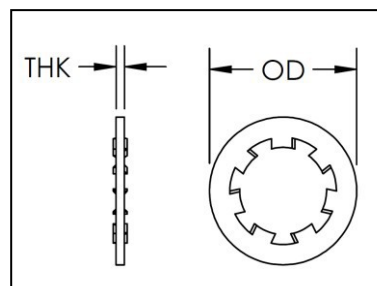
- Complies with ANSI/ASME B18.21.1 dimensions
- Spring action exerts constant pressure on the face of the nut, preventing it from loosening



Part Number	OD (inches)	THK (inches)	Box Qty
SBSLW25-C	0.487	0.062	100
SBSLW31-C	0.583	0.078	100
SBSLW38-C	0.680	0.094	100
SBSLW44-C	0.776	0.109	100
SBSLW50-C	0.869	0.125	100
SBSLW62-C	1.073	0.156	100

Internal Tooth Lockwashers

- Complies with ANSI/ASME B18.21.1 dimensions
- Angle of teeth present a biting edge that digs into the nut, preventing it from loosening



Part Number	OD (inches)	THK (inches)	Box Qty
SBITW25-C	0.478	0.028	100
SBITW31-C	0.610	0.034	100
SBITW38-C	0.692	0.040	100
SBITW44-C	0.789	0.040	100
SBITW50-C	0.900	0.045	100
SBITW62-C	1.071	0.050	100

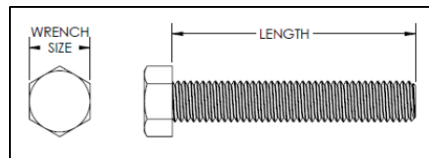
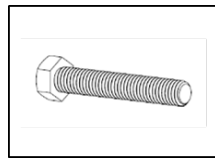
Stainless Steel Hardware

Stainless Steel is an economical choice for electrical connections due to its high strength and corrosion resistance. All Panduit stainless steel hardware is grade 18-8 which may be mildly magnetic.

Proper installation torque is essential to ensure a high conductivity connection that will not loosen from vibration.

Thread Size (UNC)	Recommended Torque (inch-pounds)	Wrench Size (SAE)
1/4-20	80	7/16
5/16-18	180	1/2
3/8-16	240	9/16
1/2-13	480	3/4
5/8-11	660	15/16

Hex Bolts



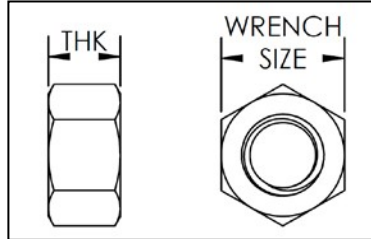
Panduit stainless steel hex bolts are fully threaded to work in a range of applications. Additionally, they comply with industry standard ANSI/ASME B18.2.1 dimensions and have a Unified National Coarse Class 2A thread fit.

Catalog Number	Thread Size	Length (inches)	Box Qty
SSBOLT2525-C	1/4-20	1/4	100
SSBOLT2550-C	1/4-20	1/2	100
SSBOLT2562-C	1/4-20	5/8	100
SSBOLT2575-C	1/4-20	3/4	100
SSNTS1420-C	1/4-20	1	100
SSBOLT25125-C	1/4-20	1 1/4	100
SSBOLT25150-C	1/4-20	1 1/2	100
SSBOLT25175-C	1/4-20	1 3/4	100
SSBOLT25200-C	1/4-20	2	100
SSBOLT25250-C	1/4-20	2 1/2	100
SSBOLT25300-C	1/4-20	3	100
SSBOLT3150-C	5/16-18	1/2	100
SSBOLT3162-C	5/16-18	5/8	100
SSBOLT3175-C	5/16-18	3/4	100
SSBOLT31100-C	5/16-18	1	100
SSBOLT31125-C	5/16-18	1 1/4	100
SSBOLT31150-C	5/16-18	1 1/2	100
SSBOLT31175-C	5/16-18	1 3/4	100
SSBOLT31200-C	5/16-18	2	100
SSBOLT31250-C	5/16-18	2 1/2	100
SSBOLT31300-C	5/16-18	3	100
SSBOLT3850-C	3/8-16	1/2	100
SSBOLT3862-C	3/8-16	5/8	100
SSBOLT3875-C	3/8-16	3/4	100
SSNTS3816-C	3/8-16	1	100
SSBOLT38125-C	3/8-16	1 1/4	100

Catalog Number	Thread Size	Length (inches)	Box Qty
SSBOLT38150-C	3/8-16	1 1/2	100
SSBOLT38175-C	3/8-16	1 3/4	100
SSBOLT38200-C	3/8-16	2	100
SSBOLT38250-C	3/8-16	2 1/2	100
SSBOLT38300-C	3/8-16	3	100
SSBOLT5050-C	1/2-13	1/2	100
SSBOLT5062-C	1/2-13	5/8	100
SSBOLT5075-C	1/2-13	3/4	100
SSBOLT50100-C	1/2-13	1	100
SSBOLT50125-C	1/2-13	1 1/4	100
SSBOLT50150-C	1/2-13	1 1/2	100
SSBOLT50175-C	1/2-13	1 3/4	100
SSBOLT50200-C	1/2-13	2	100
SSBOLT50250-C	1/2-13	2 1/2	100
SSBOLT50300-L	1/2-13	3	50
SSBOLT6250-C	5/8-11	1/2	100
SSBOLT6262-C	5/8-11	5/8	100
SSBOLT6275-C	5/8-11	3/4	100
SSBOLT62100-C	5/8-11	1	100
SSBOLT62125-C	5/8-11	1 1/4	100
SSBOLT62150-L	5/8-11	1 1/2	50
SSBOLT62175-L	5/8-11	1 3/4	50
SSBOLT62200-L	5/8-11	2	50
SSBOLT62250-L	5/8-11	2 1/2	50
SSBOLT62300-L	5/8-11	3	50

HEX NUTS

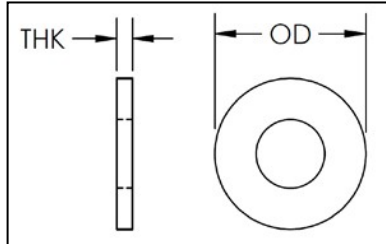
Panduit stainless steel hex nuts comply with industry standard ANSI/ASME B18.2.2 dimensions and have a Unified National Coarse Class 2B thread fit.



Catalog Number	Thread Size	THK (inches)	Box Qty
SSN1420-C	1/4-20	7/32	100
SSNUT31-C	5/16-18	17/64	100
SSN3816-C	3/8-16	21/64	100
SSNUT50-C	1/2-13	7/16	100
SSNUT62-C	5/8-11	35/64	100

FLAT WASHERS

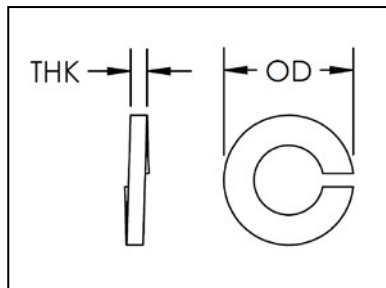
Panduit stainless steel flat washers comply with industry standard ANSI/ASME B18.22.1 Type A narrow dimensions (SAE), except for SSFW38-C.



Catalog Number	OD (inches)	THK (inches)	Box Qty
SSFW14-C	5/8	.065	100
SSFW31-C	11/16	.065	100
SSFW38-C	7/8	.050	100
SSFW50-C	1 1/16	.095	100
SSFW62-C	1 5/16	.095	100

SPLIT LOCKWASHERS

Panduit stainless steel split lockwashers comply with industry standard ANSI/ASME B18.21.1 dimensions.



Catalog Number	OD (inches)	THK (inches)	Box Qty
SSSLW25-C	0.487	0.062	100
SSSLW31-C	0.583	0.078	100
SSSLW38-C	0.680	0.094	100
SSSLW50-C	0.869	0.125	100
SSSLW62-C	1.073	0.156	100

The spring action exerts constant pressure on the face of the nut, preventing it from loosening.

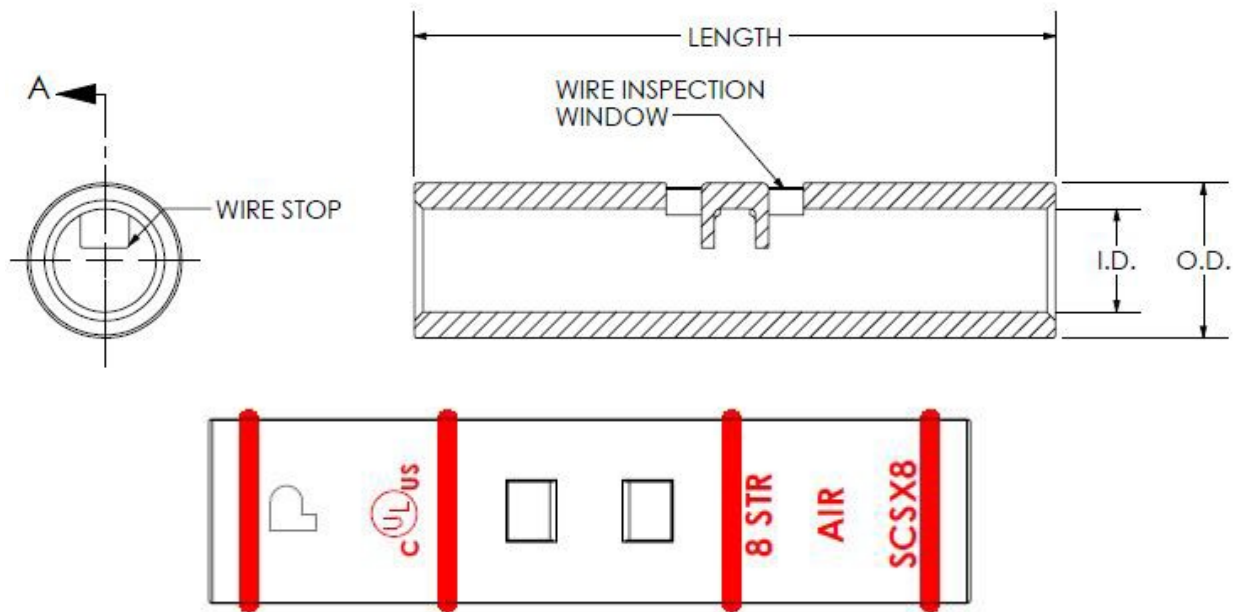


Uninsulated Butt Splice

For Use with Stranded Copper Conductor

Type SCSX

- Can be used with flex conductor classes: G, H, I K, M, and Diesel Locomotive
- Can be used with Code conductors: Class B: compact, compressed and concentric, Class C: concentric
- Can be used with MIL-W-5086 aircraft wire
- Inspection windows in barrel to visually inspect wire is fully inserted into the barrel
- Color-coded barrels marked with Panduit die index numbers for proper crimp die selection
- Internal wire stops to prevent over-insertion of conductor
- Tin-plated to inhibit corrosion
- UL Listed to 35 KV** and temperature rated to 90°C when crimped with Panduit and select Burndy crimping tools and dies



Part Number	Classes: B,C,G,H,I,K,M, Diesel Locomotive and MIL-W-5086 Aircraft	Barrel O.D (In.)	Barrel I.D. (In.)	Length (In.)	Panduit Color Code	Panduit Die Index No.	Burndy Die Index No.	Wire Strip Length (In.)	Std. Pkg. Qty.
SCSX8-L	#8 AWG	0.27	0.18	1.12	RED	P21	49	9/16	50
SCSX6-L	#6 AWG	0.31	0.22	1.12	BLUE	P24	7	9/16	50
SCSX4-L	#4 AWG	0.38	0.28	1.18	GRAY	P29	8	5/8	50
SCSX2/0-X	2/0 AWG	0.64	0.51	1.82	BLACK	P45	13	7/8	10
SCSX4/0-X	4/0 AWG	0.81	0.65	2.24	PURPLE	P54	15	1-1/16	10

** Consult with cable manufacturer for voltage stress relief instructions with applications greater than 2000 V.

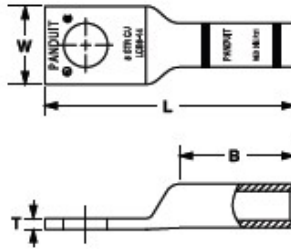


Code Conductor, One-Hole, Long Barrel Lug

For Use with Stranded Copper Conductors

Type LCB

- Long barrel maximizes number of crimps and provides premium wire pull-out strength and electrical performance
- Color-coded barrels marked with Panduit and specified competitor die index numbers for proper crimp die selection
- Enclosed barrel prevents corrosive material from entering barrel when used in harsh environments
- Tin-plated to inhibit corrosion
- Lugs available in 90 and 45 degree bent tongue. Please refer to www.panduit.com
- UL Listed and CSA Certified to 35 kV** and temperature rated to 90°C when crimped with Panduit and specified competitor crimping tools and dies
- UL Listed and CSA Certified for wide wire range-taking capability when crimped with Panduit® Uni-Die™ Dieless Crimping Tools‡
- Tested by Telcordia – meets NEBS Level 3
- American Bureau of Shipping Approved



Part Number	Copper Conductor Size	Stud Hole Size (In.)	Figure Dimensions (In.)				Panduit Color Code	Panduit Die Index No.	Burndy Die Index No.	T&B Die Index No.	Wire Strip Length (In.)	Std. Pkg. Qty
			W	B	T	L						
LCB6-12-L	#6 AWG	1/2	0.75	1.07	0.07	2.38	Blue	P24	7	24	1 1/8	50
LCB4-12-L	#4 AWG	1/2	0.75	1.05	0.07	2.40	Gray	P29	8	29	1 1/8	50

** Consult with cable manufacturer for voltage stress relief instructions with applications greater than 2000 V.

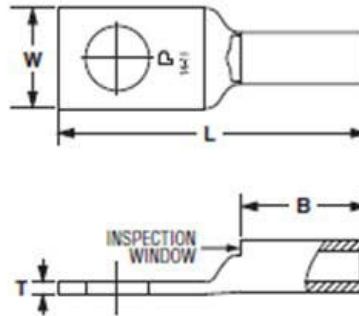
‡ Visit www.panduit.com/tools for tool and die information

UL LISTED CERTIFIED Code Conductor, One-Hole, Long Barrel with Window Lug

For Use with Stranded Copper Conductors

Type LCB-W

- Long barrel maximizes number of crimps and provides premium wire pull-out strength and electrical performance
- Inspection window to visually assure full conductor insertion
- Color-coded barrels marked with Panduit and specified competitor die index numbers for proper crimp die selection
- Tin-plated to inhibit corrosion
- UL Listed and CSA Certified to 35 KV** and temperature rated to 90°C when crimped with Panduit and specified competitor crimping tools and dies
- UL Listed and CSA Certified for wide wire range-taking capability when crimped with Panduit® Uni-Die™ Dieless Crimping Tools‡
- Tested by Telcordia – meets NEBS Level 3
- Meets J-STD-607-A and TIA-942 requirements for network systems grounding applications



Part Number	Copper Conductor Size	Stud Hole Size (In.)	Figure Dimensions (In.)				Panduit Color Code	Panduit Die Index No.	Burndy Die Index No.	T&B Die Index No.	Wire Strip Length (In.)	Std. Pkg. Qty
			W	B	T	L						
LCB500-12W-6	500 kcmil	1/2	1.54	2.50	0.22	4.3	Brown	P87	20	87	2 5/8	6

** Consult with cable manufacturer for voltage stress relief instructions with applications greater than 2000 V.

‡ Visit www.panduit.com/tools for tool and die information

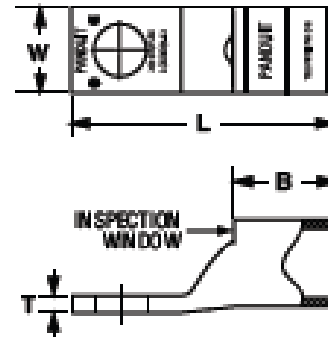
Flex Conductor, One-Hole, Standard Barrel with Window, Narrow Tongue Lug



For use with Flexible, Extra-Flexible, and Code Stranded Copper Conductors

Type LCAXN

- Narrow tongue width for limited space applications
- Can be used with code conductor and flex conductor class: G, H, I, K, M and Diesel Locomotive
- Generously beveled wire entry prevents bent back strands when inserting conductor into barrel
- Color-coded barrels marked with Panduit and specified competitor die index numbers for proper crimp die selection
- Inspection window to visually assure full conductor insertion
- Tin-plated to inhibit corrosion
- UL Listed and CSA Certified to 35 kV** and temperature rated to 90°C when crimped with Panduit® and specified competitor crimping tools and dies



Part Number	Class G, H, I, K, M	Diesel Locomotive	Code Conductor Size	Stud Hole Size (in.)	ØI	B	T	W	L	Panduit Color Code	Panduit Die Index No.	Burndy Die Index No.	T&B Die Index No.	Wire Strip Length (in.)	Std. Pkg. Qty.
LCAXN1/0-12-X	1/0 AWG	1/0 AWG	1/0 AWG	1/2	0.45	0.98	0.15	0.7	2.42	Pink	P42	12	42	1-1/16	10
LCAXN1/0-14-X	1/0 AWG	1/0 AWG	1/0 AWG	1/4	0.45	0.98	0.15	0.58	2.09	Pink	P42	12	42	1-1/16	10
LCAXN1/0-38-X	1/0 AWG	1/0 AWG	1/0 AWG	3/8	0.45	0.98	0.15	0.58	2.17	Pink	P42	12	42	1-1/16	10
LCAXN1/0-56-X	1/0 AWG	1/0 AWG	1/0 AWG	5/16	0.45	0.98	0.14	0.58	2.09	Pink	P42	12	42	1-1/16	10
LCAXN2/0-12-X	2/0 AWG	2/0 AWG	2/0 AWG	1/2	0.51	1.14	0.15	0.77	2.61	Black	P45	13	45	1-3/16	10

Flex Conductor, One-Hole, Standard Barrel with Window, Narrow Tongue Lug, cont.

Part Number	Class G, H, I, K, M	Diesel Locomotive	Code Conductor Size	Stud Hole Size (in.)	ØI	B	T	W	L	Panduit Color Code	Panduit Die Index No.	Burndy Die Index No.	T&B Die Index No.	Wire Strip Length (in.)	Std. Pkg. Qty.
LCAXN2/0-14-X	2/0 AWG	2/0 AWG	2/0 AWG	1/4	0.51	1.14	0.16	0.64	2.28	Black	P45	13	45	1-3/16	10
LCAXN2/0-38-X	2/0 AWG	2/0 AWG	2/0 AWG	3/8	0.51	1.14	0.16	0.64	2.36	Black	P45	13	45	1-3/16	10
LCAXN2/0-56-X	2/0 AWG	2/0 AWG	2/0 AWG	5/16	0.51	1.14	0.16	0.64	2.3	Black	P45	13	45	1-3/16	10
LCAXN3/0-12-X	3/0 AWG	3/0 AWG	3/0 AWG	1/2	0.57	1.19	0.18	0.71	2.68	Orange	P50	14	50	1-1/4	10
LCAXN3/0-14-X	3/0 AWG	3/0 AWG	3/0 AWG	1/4	0.57	1.19	0.18	0.71	2.38	Orange	P50	14	50	1-1/4	10
LCAXN3/0-38-X	3/0 AWG	3/0 AWG	3/0 AWG	3/8	0.57	1.19	0.18	0.71	2.45	Orange	P50	14	50	1-1/4	10
LCAXN3/0-56-X	3/0 AWG	3/0 AWG	3/0 AWG	5/16	0.57	1.19	0.18	0.71	2.4	Orange	P50	14	50	1-1/4	10
LCAXN4/0-12-X	4/0 AWG	4/0 AWG	4/0 AWG	1/2	0.65	1.44	0.2	0.81	3.07	Purple	P54	15	54	1-1/2	10
LCAXN250-12-X	250 kcmil	262.6 kcmil	-	1/2	0.7	1.44	0.21	0.88	3.12	Yellow	P62	16	62	1-1/2	10
LCAXN250-38-X	250 kcmil	262.6 kcmil	-	3/8	0.7	1.44	0.21	0.88	3	Yellow	P62	16	62	1-1/2	10
LCAXN250-56-X	250 kcmil	262.6 kcmil	-	5/16	0.7	1.44	0.21	0.88	3	Yellow	P62	16	62	1-1/2	10
LCAXN300-12-6	300 kcmil	313.1 kcmil	-	1/2	0.76	1.5	0.23	0.95	3.24	Red	P71	18	71H	1-9/16	6
LCAXN350-12-6	350 kcmil	373.7 kcmil	-	1/2	0.84	1.75	0.26	1.06	3.57	Blue	P76	19	76H	1-13/16	6
LCAXN350-38-6	350 kcmil	373.7 kcmil	-	3/8	0.84	1.75	0.26	1.06	3.39	Blue	P76	19	76H	1-13/16	6
LCAXN350-56-6	350 kcmil	373.7 kcmil	-	5/16	0.84	1.75	0.26	1.06	3.39	Blue	P76	19	76H	1-13/16	6
LCAXN450-12-6	450 kcmil	444.4 kcmil	-	1/2	0.92	1.75	0.33	1.19	4.22	Brown	P87	20	87H	1-13/16	6
LCAXN500-12-6	500 kcmil	535.3 kcmil	-	1/2	1.03	1.75	0.32	1.3	4.03	Pink	P99	L99	99H	1-15/16	6
LCAXN500-38-6	500 kcmil	535.3 kcmil	-	3/8	1.03	1.75	0.32	1.3	3.84	Pink	P99	L99	99H	1-15/16	6

** Consult with cable manufacturer for voltage stress relief instructions with applications greater than 2000 V.

‡ Visit www.panduit.com/tools for tool and die information

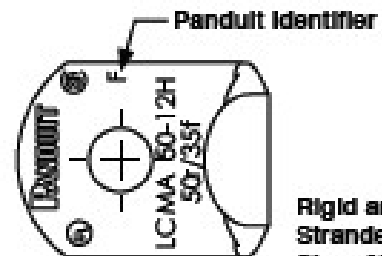
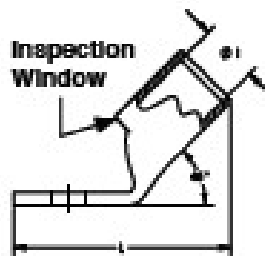
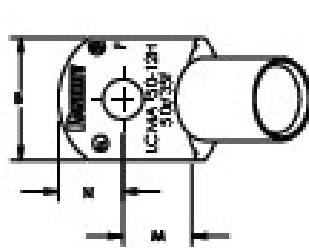
Metric Conductor, One-Hole, Standard Barrel with Window Lug

For use with Class 2R Rigid Strand and Flexible Strand Class 5F and 6F Copper Conductors

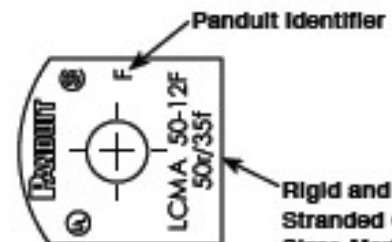
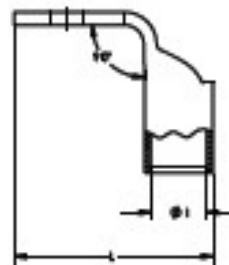
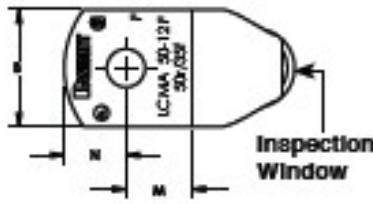
Type LCMA



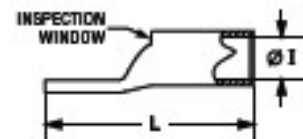
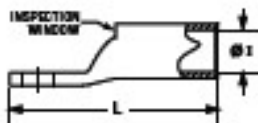
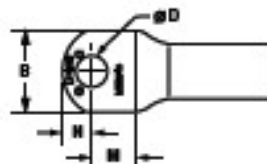
- Inspection window to visually assure full conductor insertion
- Tin-plated to inhibit corrosion
- UL Listed and CSA Certified to 35 kV** and temperature rated to 90°C when crimped with Panduit tools and dies
- Approved for Marine use by American Bureau of Shipping
- Meets EN61238-1:2003/IEC 61238-1:2003 Class B for 4mm²-240mm² Class 2r wire sizes
- Class 2r, Class 5f and Class 6f wire sizes and stud hole size marked on connector for selection and installation
- CE compliant sizes 4mm²-240mm² Class 2r wire sizes
- Product information marked on connector for selection and installation
- Rounded tongue for use in tight spaces
- Internally beveled wire entry for fast and easy installation



Rigid and Flexible Stranded Conductor Sizes Marked on Part



Rigid and Flexible Stranded Conductor Sizes Marked on Part





Metric Conductor, One-Hole, Standard Barrel with Window Lug, cont.

Part Number	Copper Conductor Size Class 2r (mm ²)	Copper Conductor Size class 5f/6f***	Stud Hole Size (mm)	ØI	B	M	N	L	Std. Pkg. Qty.
LCMA2.5-4-C	2.5	-	M4	2.4	8	5	4	18	100
LCMA6-10-C	6	*4-6	M10	3.8	15	11	9	34.5	100
LCMA10-12-C	10	-	M12	4.36	20	13	10.5	40.5	100
LCMA25-5-C	25	16	M5	6.9	14	10	8	37	100
LCMA25-5H-C	25	16	M5	6.9	14	10	8	31.8	100
LCMA25-5F-C	25	16	M5	6.9	14	10	8	29.9	100
LCMA95-6-L	95	70	M6	13.5	24.5	15	13.5	60.5	50
LCMA95-6H-L	95	70	M6	13.5	24.5	15	13.5	52.6	50
LCMA95-6F-L	95	70	M6	13.5	24.5	15	13.5	50.1	50
LCMA120-14-L	120	95	M14	15.2	27.5	15.5	14.5	65	50
LCMA185-8-X	185	150	M8	18.6	33.5	16.5	17.5	72.5	10
LCMA185-8H-X	185	150	M8	18.6	33.5	16.5	17.5	66	10
LCMA185-8F-X	185	150	M8	18.6	33.5	16.5	17.5	62	10
LCMA630-12-1	630	-	M12	34.5	63	28.5	27.5	132	1

*** Not CE compliant and not tested to EN 61238-:2003/IEC 61238-1:2003 for terminations with metric Class 5f or Class 6f flexible stranded conductor.

** Consult with cable manufacturer for voltage stress relief instructions with applications greater than 2000 V.

* Class 5f only

‡ Visit www.panduit.com/tools for tool and die information

Metric Conductor, Two-Hole, Standard Barrel with Window Lug

For use with Class 2R Rigid Strand and Flexible Strand Class 5F and 6F Copper Conductors

Type LCMD



- Inspection window to visually assure full conductor insertion
- Tin-plated to inhibit corrosion
- UL Listed and CSA Certified to 35 kV** and temperature rated to 90°C when crimped with Panduit® tools and dies
- Class 2r, Class 5f and Class 6f wire sizes and stud hole size marked on connector for selection and installation
- Internally beveled wire entry for fast and easy installation
- Approved for Marine use by American Bureau of Shipping
- Meets EN61238-1:2003/IEC 61238-1-2003 Class B for 4mm²-630mm² Class 2r wire sizes
- CE compliant sizes 4mm²-630mm² Class 2r wire sizes

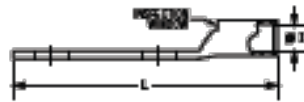


Figure 1

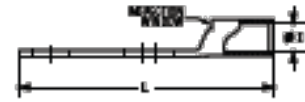
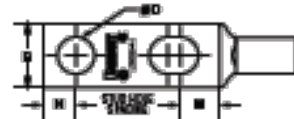


Figure 2

Part Number	Fig. No.	Copper Conductor Size Class 2r (mm ²)	Copper Conductor Size class 5f/6f***	Stud Hole Size (mm)	Stud Hole Spacing (mm)	ØI	B	M	N	L	Std. Pkg. Qty.
LCMD16-12-Q	1	16	10	M12							25
LCMD35-8-Q	1	35	25	M8	44.5	8.2	15.5	12.3	8.5	86.5	25
LCMD35-1040-Q	1	35	25	M10	40	8.2	15.5	12.3	8.5	85.8	25
LCMD50-8CD-Q	2	50	35	M8	25	9.8	18	11.5	10	71.5	25
LCMD70-1040-X	1	70	50	M10	40	11.5	20.8	14.5	11.5	100.3	10
LCMD70-1240-X	1	70	50	M12	40	11.5	20.8	14.5	11.5	100.3	10
LCMD95-10-X	1	95	70	M10	44.5	13.5	24.5	15	13.5	105	10
LCMD120-1240-X	1	120	95	M12	40	15.2	27.5	15.5	14.5	111.5	10
LCMD300-10CD-5	2	300	240	M10	25	23.5	42.5	22	20	119.5	5

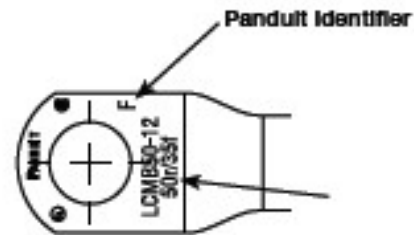
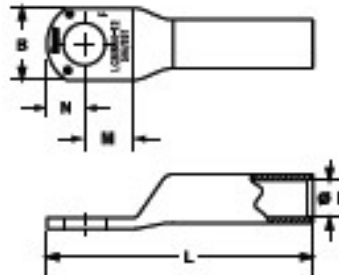
*** Not CE compliant and not tested to EN 61238-1:2003/IEC 61238-1:2003 for terminations with metric Class 5f or Class 6f flexible stranded conductor.

Rigid and Flexible Stranded Metric Conductor, One-Hole, Long Barrel Lug, No Window

For use with Class 2R Rigid Strand and Flexible Strand Class 5F and 6F Copper Conductors
Type LCMB



- Long barrel design to maximize number of crimps
- No inspection window to prevent contaminants from entering barrel
- Tin-plated to inhibit corrosion
- UL Listed and CSA Certified to 35 kV** and temperature rated to 90°C when crimped with Panduit® tools and dies
- Approved for Marine use by American Bureau of Shipping
- Class 2r, Class 5f and Class 6f wire sizes and stud hole size marked on connector for selection and installation
- Rounded tongue for use in tight spaces
- Internally beveled wire entry for fast and easy installation
- Meets EN61238-1:2003/IEC 61238-1-2003 Class B for 4mm²-240mm² Class 2r wire sizes
- CE compliant sizes 10mm²-240mm² Class 2r wire sizes



Rigid and Flexible Stranded Conductor Sizes Marked on Part

Part Number	Copper Conductor Size Class 2r (mm ²)	Copper Conductor Size class 5f/6f***	Stud Hole Size (mm)	ØI	B	M	N	L	Std. Pkg. Qty.
LCMB25-5-L	25	16	M5	6.9	14	10	8	48.7	50
LCMB35-8-Q	35	25	M8	8.2	15.5	12.3	8.5	57.3	25
LCMB95-6-L	95	70	M6	13.5	24.5	15	13.5	79	50

*** Not CE compliant and not tested to EN 61238-1:2003/IEC 61238-1:2003 for terminations with metric Class 5f or Class 6f flexible stranded conductor.

** Consult with cable manufacturer for voltage stress relief instructions with applications greater than 2000 V.

‡ Visit www.panduit.com/tools for tool and die information

Rigid and Flexible Stranded Metric Conductor, Two-Hole, Long Barrel Lug, No Window

For use with Class 2R Rigid Strand and Flexible Strand Class 5F and 6F Copper Conductors
Type LCMC



- Long barrel design to maximize number of crimps
- No inspection window to prevent contaminants from entering barrel
- Tin-plated to inhibit corrosion
- UL Listed and CSA Certified to 35 kV** and temperature rated to 90°C when crimped with Panduit® tools and dies
- Approved for Marine use by American Bureau of Shipping
- Class 2r, Class 5f, and Class 6f wire sizes and stud hole size marked on connector for selection and installation
- Internally beveled wire entry for fast and easy installation
- Meets EN61238-1:2003/IEC 61238-1:2003 Class B for 10mm²-630mm² Class 2r wire sizes
- CE compliant sizes 10mm²-630mm² Class 2r wire sizes

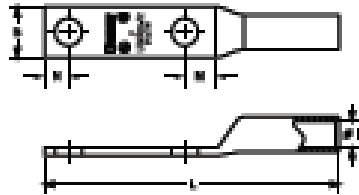
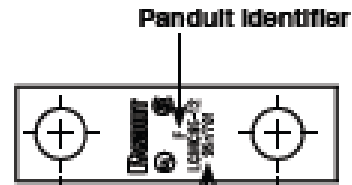


Figure 1.
Two-Hole



Panduit Identifier
Rigid and Flexible
Stranded Conductor
Sizes Marked on Part

Part Number	Fig. No.	Copper Conductor Size Class 2r (mm ²)	Copper Conductor Size class 5f/6f***	Stud Hole Size (mm)	Stud Hole Spacing (mm)	ØI	B	M	N	L	Std. Pkg. Qty.
LCMC25-5-L	1	25	16	M5	44.5	6.9	15.5	10	8	93.2	50
LCMC35-8-Q	1	35	25	M8	44.5	8.2	15.5	12.3	8.5	101.8	25
LCMC95-6-L	1	95	70	M6	44.5	13.5	24.5	15	13.5	123.5	50
LCMC95-10-X	1	95	70	M10	44.5	13.5	24.5	15	13.5	123.5	10
LCMC185-8-X	1	185	150	M8	44.5	18.6	33.5	16.5	17.5	145.1	10

*** Not CE compliant and not tested to EN 61238-1:2003/IEC 61238-1:2003 for terminations with metric Class 5f or Class 6f flexible stranded conductor.

** Consult with cable manufacturer for voltage stress relief instructions with applications greater than 2000 V.

* Class 5f only

‡ Visit www.panduit.com/tools for tool and die information

X-ON Electronics

Largest Supplier of Electrical and Electronic Components

Click to view similar products for [Screws & Fasteners](#) category:

Click to view products by [Panduit](#) manufacturer:

Other Similar products are found below :

[5721-1440-1/4-SS](#) [593503FX](#) [0098.0094](#) [0098.9206](#) [0098.9219](#) [0098.9221](#) [0098.9262](#) [596-2114-013](#) [59781-4](#) [59781-6](#) [0098.0026](#)
[0098.9210](#) [0098.9212](#) [60227-01](#) [60227-04](#) [60227-08](#) [60228-09](#) [618-00001](#) [62153-03](#) [62153-11](#) [M316-KSSTMCZ100](#) [M3440-SS](#) [M3442-SS](#) [M3448-SS](#) [6291A](#) [6292-1](#) [6-306105-9](#) [6-306131-4](#) [690432-1](#) [699161-000](#) [700989](#) [7-18023-1](#) [7-21002-8](#) [7230-3](#) [7235-3](#) [7248-1](#) [7248-2](#)
[73542-02](#) [CAPTIVE SHORT THUMBSCREW](#) [745564-1](#) [748174-2](#) [F03-02](#) [SUS316](#) [F1209](#) [751-00001](#) [80011](#) [809704-1](#) [8700](#) [8860220](#)
[9047](#) [95000002B](#) [9885-2](#)