

PANDUIT

EPSON
EXCEED YOUR VISION

PORTABLE LABEL PRINTER PARTNER




**Combining best in class print technology
with industry leading labeling and
software capabilities**

NEW! MP100 and MP300
Mobile Printers

Product Features



| MP100 | MP300 | Easy-Mark Plus™ | Easy-Mark™ iLabel™ App* |
|---------------------------------------|--|---|--|
| Automatic cutter | 360 dpi print resolution | Common templates to easily create and print all electrical and network applications. | Easily create and print text, barcode, and QR code labels with variety of font sizes |
| USB and Bluetooth Connectivity | Automatic cutter with full or half cut | 11 languages included | Voice to text functionality |
| Integration with Fluke LinkWare™ Live | Fast 1.4"/sec print speed | Available for USB flash drive, CD, web download or network server-based version | Date and time stamp label creation |
| Up to 1.0" wide label media | Up to 1.5" wide label media | Works with Panduit portable and desktop thermal transfer printers, Panduit embossing systems and other laser jet and ink jet printers |  |
| Prints continuous labels | Prints die-cut and continuous labels | A free 90 day trial version is available from www.panduit.com | |
| Prints from mobile labeling apps | USB connectivity | | Easy-Mark™ Network™ App* Easily create labels for network components and cabling that are ANSI/TIA-606 compliant Connect to Fluke LinkWare™ Live Voice to text functionality |
| Compact Size | Prints from Easy-Mark Plus™ Software | | |
| | Magnetic attachment accessory | | |
| | Rechargeable battery pack | | |

Product Selection

Printers



MP300

MP100



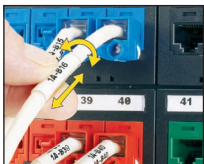
EMPLUS

| Part Number | Description |
|---------------|---|
| MP300 | Includes MP300 printer, one (1) cassette of S100X150VAM self-laminating labels, rechargeable Li-ion Battery Pack, hard carrying case, AC power adapter, USB cable, magnetic attachments and quick reference card. |
| MP100 | Includes MP100 printer, protective impact bumper, 1 cassette of T100X000VPM-BK continuous vinyl tape, AC power adapter, USB cable, and quick reference card. |
| EMPLUS-CD | Easy-Mark Plus™ Labeling Software, CD-ROM. |
| EMPLUS-DL | Easy-Mark Plus™ Labeling Software, online download. |
| EMPLUS-2GO | Easy-Mark Plus™ Portable Application, USB flash drive. |
| EMPLUS-SERVER | Easy-Mark Plus™ Labeling Software, networkable server based version. |

Windows is a registered trademark of Microsoft Corp. in the United States and/or other countries.

Turn-Tell® Label Cassettes Patented

- Fast-loading Label Cassette includes both label material and ribbon to make changing labels easy
- Innovative label design allows labels to rotate for visibility from any angle, and for repositioning on the wire/cable to align legends and improve aesthetics
- Labels can be easily installed on existing terminated wires and assemblies without disconnecting the wires/cables




| Part Number | Part Description | Print-On Area Color | Width | | Length | | Std. Pkg. Qty. | Std. Ctn. Qty. |
|-------------|--|---------------------|-------|------|--------|------|----------------|----------------|
| | | | In. | mm | In. | mm | | |
| R100X075V1M | MP Cassette, Turn-Tell Self-Laminating Label, Vinyl, 1.00" W x 0.75" H, .25" Print On Area, Clear/White | Black on White | 1.00 | 25.4 | 0.75 | 19.1 | 1 | 5 |
| R100X125V1M | MP Cassette, Turn-Tell Self-Laminating Label, Vinyl, 1.00" W x 1.25" H, .38" Print On Area, Clear/White | Black on White | 1.00 | 25.4 | 1.25 | 31.8 | 1 | 5 |
| R100X150V1M | MP Cassette, Turn-Tell Self-Laminating Label, Vinyl, 1.00" W x 1.50" H, 0.50" Print On Area, Clear/White | Black on White | 1.00 | 25.4 | 1.50 | 38.1 | 1 | 5 |
| R100X225V1M | MP Cassette, Turn-Tell Self-Laminating Label, Vinyl, 1.00" W x 2.25" H, .75" Print On Area, Clear/White | Black on White | 1.00 | 25.4 | 2.25 | 57.2 | 1 | 5 |

Self Laminating Label Cassettes

- Fast-loading Label Cassette includes both label material and ribbon to make changing labels easy

- Self-laminating adhesive labels for wire/cable identification includes a white print-on areas and clear over laminate



 Self-Laminating Vinyl (VA)

 -40° F to 150° F (-40° C to 66° C)

| Part Number | Part Description | Print-On Area Color | Width | | Length | | Print-On Area Height | | Min. Cable O.D. | | Max. Cable O.D. | | Wire/Cable Size Range | Std. Pkg. Qty. | Std. Ctn. Qty. |
|-------------|--|---------------------|-------|------|--------|-------|----------------------|------|-----------------|------|-----------------|------|-----------------------|----------------|----------------|
| | | | In. | mm | In. | mm | In. | mm | In. | mm | In. | mm | | | |
| S050X075VAM | MP Cassette, Self-Laminating Label, Vinyl, .50" W x .75" H, .25" Print On Area, Clear/White | Black on White | 0.50 | 12.7 | 0.75 | 19.1 | 0.25 | 6.4 | 0.08 | 2.0 | 0.16 | 4.0 | 18 - 14 AWG | 1 | 5 |
| S050X125VAM | MP Cassette, Self-Laminating Label, Vinyl, .50" W x 1.25" H, .38" Print On Area, Clear/White | Black on White | 0.50 | 12.7 | 1.25 | 31.8 | 0.38 | 9.7 | 0.12 | 3.1 | 0.28 | 7.0 | 12 - 10 AWG | 1 | 5 |
| S050X150VAM | MP Cassette, Self-Laminating Label, Vinyl, .50" W x 1.50" H, .50" Print On Area, Clear/White | Black on White | 0.50 | 12.7 | 1.50 | 38.1 | 0.50 | 12.7 | 0.16 | 4.0 | 0.32 | 8.1 | Cat. 5e/Cat. 6 | 1 | 5 |
| S100X075VAM | MP Cassette, Self-Laminating Label, Vinyl, 1.00" W x .75" H, .25" Print On Area, Clear/White | Black on White | 1.00 | 25.4 | 0.75 | 19.1 | 0.25 | 6.4 | 0.08 | 2.0 | 0.16 | 4.0 | 18 - 14 AWG | 1 | 5 |
| S100X125VAM | MP Cassette, Self-Laminating Label, Vinyl, 1.00" W x 1.25" H, .38" Print On Area, Clear/White | Black on White | 1.00 | 25.4 | 1.25 | 31.8 | 0.38 | 9.7 | 0.12 | 3.1 | 0.28 | 7.0 | 12 - 10 AWG | 1 | 5 |
| S100X150VAM | MP Cassette, Self-Laminating Label, Vinyl, 1.00" W x 1.50" H, .50" Print On Area, Clear/White | Black on White | 1.00 | 25.4 | 1.50 | 38.1 | 0.50 | 12.7 | 0.16 | 4.0 | 0.32 | 8.1 | Cat. 5e/Cat. 6 | 1 | 5 |
| S100X225VAM | MP Cassette, Self-Laminating Label, Vinyl, 1.00" W x 2.25" H, .75" Print On Area, Clear/White | Black on White | 1.00 | 25.4 | 2.25 | 57.2 | 0.75 | 19.1 | 0.24 | 6.1 | 0.48 | 12.2 | 8 - 4 AWG | 1 | 5 |
| S100X400VAM | MP Cassette, Self-Laminating Label, Vinyl, 1.00" W x 4.00" H, 1.00" Print On Area, Clear/White | Black on White | 1.00 | 25.4 | 4.00 | 101.6 | 1.00 | 25.4 | 0.32 | 8.1 | 0.95 | 24.3 | 2 - 1 AWG | 1 | 5 |
| S100X650VAM | MP Cassette, Self-Laminating Label, Vinyl, 1.00" W x 6.50" H, 1.50" Print On Area, Clear/White | Black on White | 1.00 | 25.4 | 6.50 | 165.1 | 1.50 | 38.1 | 0.48 | 12.2 | 1.59 | 40.4 | 1/0-250 MCM | 1 | 5 |

Continuous Tape Cassettes

- Fast-loading Label Cassette includes both label material and ribbon to make changing labels easy

- Print custom pipe markers, voltage markers, signs, bin markers, and network identification labels on demand
- For flat label applications only



| Part Number | Part Description | Ribbon & Material Color | Width | | Length | | Std. Pkg. Qty. | Std. Ctn. Qty. |
|----------------|--|-------------------------|-------|------|--------|-----|----------------|----------------|
| | | | In. | mm | In. | mm | | |
| T038X000VPM-BK | MP Cassette, Continuous Tape, Vinyl, .38" W x 23' L, Black on White. | Black on White | 0.354 | 9.0 | 23 | 7.0 | 1 | 5 |
| T038X000VXM-BK | MP Cassette, Continuous Tape, Vinyl, .38" W x 23' L, Black on Yellow. | Black on Yellow | 0.354 | 9.0 | 23 | 7.0 | 1 | 5 |
| T038X000YKM-BK | MP Cassette, Continuous Tape, Polyester, .38" W x 30' L, Black on Clear. | Black on Clear | 0.354 | 9.0 | 30 | 9.1 | 1 | 5 |
| T050X000VPM-BK | MP Cassette, Continuous Tape, Vinyl, .50" W x 23' L, Black on White. | Black on White | 0.472 | 12.0 | 23 | 7.0 | 1 | 5 |
| T050X000VXM-BK | MP Cassette, Continuous Tape, Vinyl, .50" W x 23' L, Black on Yellow. | Black on Yellow | 0.472 | 12.0 | 23 | 7.0 | 1 | 5 |
| T050X000YKM-BK | MP Cassette, Continuous Tape, Polyester, .50" W x 30' L, Black on Clear. | Black on Clear | 0.472 | 12.0 | 30 | 9.1 | 1 | 5 |
| T075X000VPM-BK | MP Cassette, Continuous Tape, Vinyl, .75" W x 23' L, Black on White. | Black on White | 0.710 | 18.0 | 23 | 7.0 | 1 | 5 |
| T075X000VXM-BK | MP Cassette, Continuous Tape, Vinyl, .75" W x 23' L, Black on Yellow. | Black on Yellow | 0.710 | 18.0 | 23 | 7.0 | 1 | 5 |
| T075X000YKM-BK | MP Cassette, Continuous Tape, Polyester, .75" W x 30' L, Black on Clear. | Black on Clear | 0.710 | 18.0 | 30 | 9.1 | 1 | 5 |
| T100X000MPM-BK | MP Cassette, Continuous Tape, Magnetic, 1.00" W x 4.9' L, Black on White. | Black on White | 0.945 | 24.0 | 4.9 | 1.5 | 1 | 5 |
| T100X000MXM-BK | MP Cassette, Continuous Tape, Magnetic, 1.00" W x 4.9' L, Black on Yellow. | Black on Yellow | 0.945 | 24.0 | 4.9 | 1.5 | 1 | 5 |
| T100X000VPM-BK | MP Cassette, Continuous Tape, Vinyl, 1.00" W x 23' L, Black on White. | Black on White | 0.945 | 24.0 | 23 | 7.0 | 1 | 5 |
| T100X000VXM-BK | MP Cassette, Continuous Tape, Vinyl, 1.00" W x 23' L, Black on Yellow. | Black on Yellow | 0.945 | 24.0 | 23 | 7.0 | 1 | 5 |
| T100X000YKM-BK | MP Cassette, Continuous Tape, Polyester, 1.00" W x 30' L, Black on Clear. | Black on Clear | 0.945 | 24.0 | 30 | 9.1 | 1 | 5 |
| T150X000MPM-BK | MP Cassette, Continuous Tape, Magnetic, 1.50" W x 4.9' L, Black on White. | Black on White | 1.471 | 36.0 | 4.9 | 1.5 | 1 | 5 |
| T150X000MXM-BK | MP Cassette, Continuous Tape, Magnetic, 1.50" W x 4.9' L, Black on Yellow. | Black on Yellow | 1.471 | 36.0 | 4.9 | 1.5 | 1 | 5 |
| T150X000VPM-BK | MP Cassette, Continuous Tape, Vinyl, 1.50" W x 23' L, Black on White. | Black on White | 1.471 | 36.0 | 23 | 7.0 | 1 | 5 |
| T150X000VXM-BK | MP Cassette, Continuous Tape, Vinyl, 1.50" W x 23' L, Black on Yellow. | Black on Yellow | 1.471 | 36.0 | 23 | 7.0 | 1 | 5 |
| T150X000YKM-BK | MP Cassette, Continuous Tape, Polyester, 1.50" W x 30' L, Black on Clear. | Black on Clear | 1.471 | 36.0 | 30 | 9.1 | 1 | 5 |

Epson Print Technology

Epson is a global technology leader dedicated to becoming indispensable to society by connecting people, things and information with its efficient, compact and precision technologies.

Combined with Panduit's Labeling and Software Capabilities

Panduit creates leading-edge labeling solutions for electrical and network environments, from the data center to the telecom room, from the jobsite to the plant floor, Panduit has you covered.

Results in Best-in-Class Performance

Panduit has entered into a strategic partnership with Seiko Epson Corporation to jointly develop printer and labels for the industrial, construction and network infrastructure markets. The results of the partnership are printers with best-in-class print quality, speed, capabilities and label selection. The MP100 & MP300 printers and labels are the first of many products that will be jointly developed through this partnership.



| Features | MP100 | | | |
|------------------------------|-----------|-----------|-----------|--------|
| Label Width up to 1" | ✓ | | ✓ | ✓ |
| Label Offering | ★ ★ ★ ★ ★ | ★ ★ ★ ★ ★ | ★ ★ ★ | ★ ★ ★ |
| Cutter | Automatic | Manual | Automatic | Manual |
| Bluetooth or WiFi compatible | ✓ | | ✓ | ✓ |



| Features | MP300 | | | |
|------------------|----------------------------------|-----------|-------------------------|---------|
| Label Width | 1.5" | 1.0" | 1.0" | 1.0" |
| Label Offering | ★ ★ ★ ★ ★ | ★ ★ ★ ★ ★ | ★ ★ ★ | ★ ★ |
| Print Resolution | 360 dpi | 300 dpi | 180 dpi | 300 dpi |
| Print Speed | 1.4 ips | 1.3 ips | 1.2 ips | NA |
| Cutter | Automatic; Full and Half cutting | Manual | Automatic; Full cutting | Manual |

Competitive comparison based on published specifications.

WORLDWIDE SUBSIDIARIES AND SALES OFFICES

PANDUIT CANADA
Markham, Ontario
cs-cdn@panduit.com
Phone: 800.777.3300

PANDUIT EUROPE LTD.
London, UK
cs-emea@panduit.com
Phone: 44.20.8601.7200

PANDUIT SINGAPORE PTE. LTD.
Republic of Singapore
cs-ap@panduit.com
Phone: 65.6305.7575

PANDUIT JAPAN
Tokyo, Japan
cs-japan@panduit.com
Phone: 81.3.6863.6000

PANDUIT LATIN AMERICA
Guadalajara, Mexico
cs-la@panduit.com
Phone: 52.33.3777.6000

PANDUIT AUSTRALIA PTY. LTD.
Victoria, Australia
cs-aus@panduit.com
Phone: 61.3.9794.9020

For a copy of Panduit product warranties, log on to www.panduit.com/warranty

For more information

Visit us at www.panduit.com

Contact Customer Service by email: cs@panduit.com
or by phone: 800.777.3300

PANDUIT®

©2019 Panduit Corp.
ALL RIGHTS RESERVED.
IDSG01--SA-ENG
11/2019

X-ON Electronics

Largest Supplier of Electrical and Electronic Components

Click to view similar products for [Printers category](#):

Click to view products by [Panduit manufacturer](#):

Other Similar products are found below :

[CU0620-000](#) [FTP-627USL402](#) [FTP-648MCL570](#) [PWC-L07A1-W1-E](#) [DPU-V445-10B-E](#) [D-SCE-12-50-S1-4](#) [IF2302-01UK-E](#) [IF9001-01P-E](#)
[IFC-001K](#) [2000P-RIBBON-4AG-MED](#) [206868-000](#) [OP-LH200A-E](#) [LB1256-E](#) [LM-1/4-TUBE-WE](#) [308-LE](#) [ACUH205A-E](#) [1813390001](#)
[FTP-628CU601R](#) [351013-000](#) [RH-48-00-E](#) [4775630001](#) [TTC-PRINTER-PRINthead-300](#) [IF2301-01B](#) [IFC-001K-E](#) [IFH001-01B](#) [LM-1/2-](#)
[TUBE-WE](#) [DPU-D3-01A-E](#) [D-SCE-12-50-9](#) [094514-000](#) [E64127-000](#) [T200-RIBBON-WH-4HT](#) [CP3963-000](#) [2000P-RIBBON-4AG-NAR](#)
[2000P-RIBBON-WH-MED](#) [U001023895X1](#) [FTP-624Y002](#) [ED4098-000](#) [NC-LSC05](#) [TE3124-PRINthead](#) [1-2186371-1](#) [FTP-62GY601](#)
[FTP-62GY301](#) [0803480:0001](#) [346933-000](#) [D-SCE-6.4-50-9](#) [FTP-628MCL506](#) [FTP-628MCL054#01](#) [1-2186507-1](#) [1-2186512-1](#) [1-2186515-1](#)