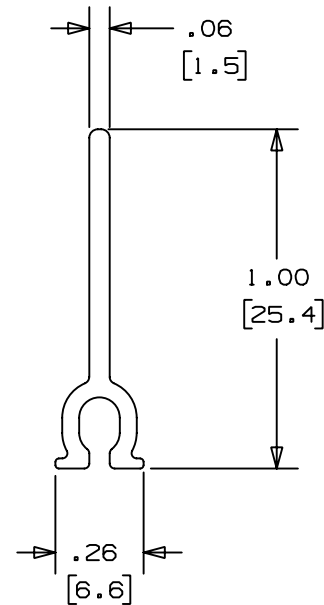


THIS COPY IS PROVIDED ON A RESTRICTED BASIS AND IS NOT TO BE USED IN ANY WAY DETRIMENTAL TO THE INTERESTS OF PANDUIT CORP.

PANDUIT P/N	LENGTH	WEIGHT
T45DW8	96.00 ±.18 (2438 ±4.6)	.36 LB/96 IN (163.7 G/2438 mm)
T45DW10	120.00 ±.18 (3048 ±4.6)	.45 LB/120 IN (204.6 G/3048 mm)
T45DW2 (SEE NOTE 4)	78.7 ±.18 (2000 ±4.6)	.30 LB/78.7 IN (134.2 G/2000 mm)
T45DW3 (SEE NOTE 4)	118.1 ±.18 (3000 ±4.6)	.20 LB/118.1 IN (201.4 G/3000 mm)



NOTES:

- SEE CURRENT CATALOG FOR ADDITIONAL PART SUFFIXES TO INDICATE COLOR AND OR PACKAGE QUANTITY.
- THE T45DW SNAPS ONTO RAILS IN THE T45 RACEWAY BASE TO CREATE SEPARATE CHANNELS.
- DIMENSIONS IN PARENTHESIS ARE IN METRIC.
- A METRIC LENGTHS ONLY AVAILABLE OUTSIDE NORTH AMERICA.

CAD FILENAME/LAYERS		D36975DV_DC_T45DW_00B.PRT										
PANDUIT		CORP. TINLEY PARK, ILLINOIS										
		T-45 RACEWAY DIVIDER WALL (T45DW8, T45DW10, T45DW2, T45DW3) CUSTOMER DRAWING										
UNLESS OTHERWISE SPECIFIED, DIMENSIONAL TOLERANCES ARE: (.X) ± (.XXX) ± (.XX) ±.03 (.8) ANGLES ±		UNLESS OTHERWISE SPECIFIED, ALL DIMENSIONS ARE GIVEN IN INCHES, THIRD ANGLE PROJECTION.										
1	06-16-00	JHNU	HIW	A. REVISED NOTE 4: ADDED METRIC LENGTHS	36975-57	HIW	HIW			DRAWN BY RABO	MAT'L: PVC	SCALE NONE
R	10-28-99	RABO	HIW	RELEASED TO PRODUCTION.	36975-57	HIW	HIW			DATE 10-28-99		DRAWING NO. 36975-57
REV	DATE	BY	CHK	DESCRIPTION	ECN	CHK	CUST	SUP		CHECKED BY BKR		SIZE A

X-ON Electronics

Largest Supplier of Electrical and Electronic Components

Click to view similar products for [Wire Ducting](#) category:

Click to view products by [Panduit](#) manufacturer:

Other Similar products are found below :

[66200A-10](#) [CVED32VEPG](#) [CVED40VEPG](#) [F512D5-5F140Y](#) [F512D5-5F200Y](#) [F512D5-5F26Y](#) [F512D5-5F30Y](#) [F512D5-5F33Y](#) [F512D5-5F34Y](#) [F512D5-5F45Y](#) [F512D5-5F50Y](#) [F512D5-5F54Y](#) [F512D5-5F66Y](#) [F512D5-5F70Y](#) [F512D5-5F75Y](#) [F512D5-5F90Y](#) [F612D5-5F100Y](#) [F612D5-5F130Y](#) [F612D5-5F50Y](#) [F612D5-5F56Y](#) [F612D5-5F58Y](#) [F6L12D5-5F46](#) [F912D5-5F11Y](#) [F912D5-5F170Y](#) [F912D5-5F175Y](#) [F912D5-5F230Y](#) [F912D5-5F300Y](#) [F912D5-5F55Y](#) [F912D5-5F56Y](#) [F912D5-5F63Y](#) [F912D5-5F6Y](#) [F912D5-5F75Y](#) [F912D5-5F85Y](#) [F912D5-5F86Y](#) [F912D5-5F88Y](#) [F912D5-5F96Y](#) [FAP0047WBLMTP](#) [FAP12WBRDRDDLZ](#) [FAP12WDYLYLDLZ](#) [FAP12WEORORDLZ](#) [FAP6WEORORDLZ](#) [FAP6WFDBDBDLZ](#) [FAP8WEORORDLZ](#) [FCE2UWCL](#) [800A-LB](#) [802A-ECSP](#) [802I-ICSP](#) [FJQADH](#) [FJQFXT](#) [PED10](#)