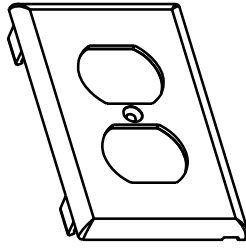
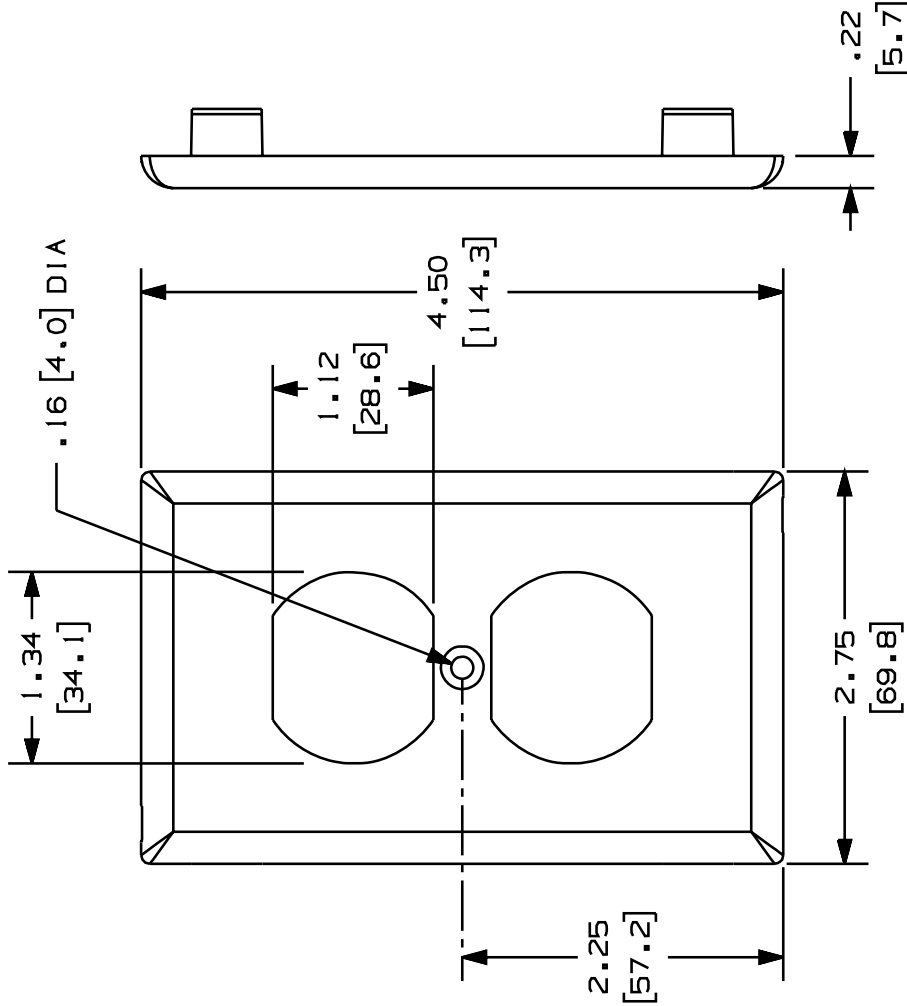


THIS COPY IS PROVIDED ON A RESTRICTED BASIS AND IS NOT TO BE USED IN ANY WAY DETRIMENTAL TO THE INTERESTS OF PANDUIT CORP.

PANDUIT P/N	WEIGHT
T70PS	.52 LB/10 PCS (237.9/10 PCS)

NOTES:

- SEE CURRENT CATALOG FOR ADDITIONAL PART SUFFIXES TO INDICATE COLOR AND OR PACKAGE QUANTITY.
- ONE (1) #6-32 X 1/2" SLOTTED OVAL HEAD SCREW IS INCLUDED WITH THIS FACEPLATE. THE T70PS FACEPLATE CAN BE USED WITH PANDUIT SURFACE RACEWAYS AND BOXES THAT ACCEPT 70mm SNAP-ON FACEPLATES (INCLUDES: T-70, TWIN-70, TE70, TG-70, ETC.)
- THE T70PS FACEPLATE ACCEPTS PANDUIT FOUR MODULE "106" DUPLEX MODULE FRAME - CF1064 (OR "106" COMMUNICATION MODULE FRAMES OF MOST OTHER MANUFACTURERS)
- THE T70PS FACEPLATE IS NOT INTENDED FOR USE WITH ELECTRICAL DEVICES.
- DIMENSIONS IN PARENTHESES ARE IN METRIC.



CAD FILENAME/LAYERS

D37239BB_DC_T70PS_00B.PRT

PANDUIT

CORP. TINLEY PARK, ILLINOIS

T-70 SINGLE GANG 106 DUPLEX COMMUNICATION SNAP-ON FACEPLATE (WITH SCREW HOLES TO MOUNT A MODULE FRAME)
CUSTOMER DRAWING

UNLESS OTHERWISE SPECIFIED, DIMENSIONAL TOLERANCES ARE:
1.X1 ± .010 ANGLES : 1°
1.XX ± .010 ANGLES : 1°

UNLESS OTHERWISE SPECIFIED, ALL DIMENSIONS ARE GIVEN IN INCHES, THIRD ANGLE PROJECTION.

DRAWN BY PM

MAT'L: NONE

DATE 9-27-99

PVC

DWG

CHK'D HIW

37239-04

SIZE

ECN · R · SUP

DESCRIPTION

REV DATE BY CHK

1 3-6-00 MSO A. REVISED NOTE 3 AND 4.

R 9-27-99 PM HIW RELEASED TO PRODUCTION

37239-04 HIW HIW

37239-04

X-ON Electronics

Largest Supplier of Electrical and Electronic Components

Click to view similar products for [Wire Ducting & Raceways](#) category:

Click to view products by [Panduit](#) manufacturer:

Other Similar products are found below :

[800A-LB](#) [801I-LSP](#) [802A-ECSP](#) [802I-ICSP](#) [923223-000](#) [PRAF6WH-X](#) [A0405538](#) [1301150342](#) [1301160034](#) [1301170070](#) [1301180011](#)
[1301230083](#) [1301230153](#) [1301240273](#) [1301250006](#) [1302261238](#) [1302261321](#) [1302262552](#) [1302263103](#) [1302263178](#) [1302263259](#)
[1302263816](#) [1302263860](#) [1302264375](#) [1302264390](#) [1301150343](#) [1301160030](#) [1301170050](#) [1301170051](#) [1301170061](#) [1301180013](#)
[1301230086](#) [1301230130](#) [1301240054](#) [1302260055](#) [1302260376](#) [1302261343](#) [1302261344](#) [1302262674](#) [1302263095](#) [1302263166](#)
[1302263209](#) [1302263513](#) [1302263851](#) [1302263870](#) [1302264137](#) [1302264218](#) [DD1/J](#) [AX102007](#) [AX102411](#)