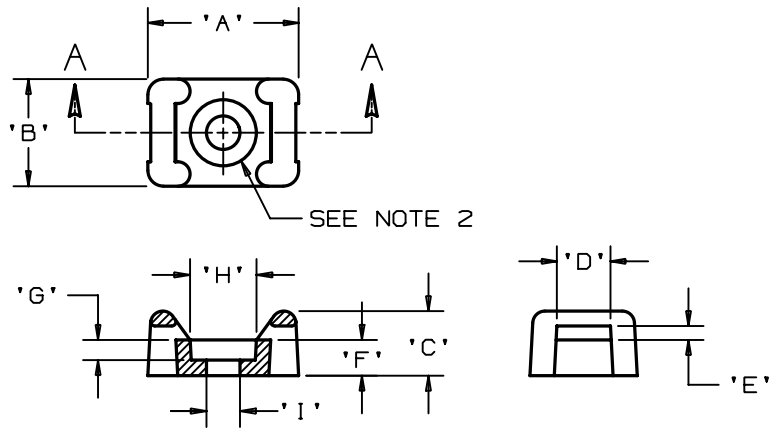


THIS COPY IS PROVIDED ON A RESTRICTED BASIS AND IS NOT TO BE USED IN ANY WAY DETRIMENTAL TO THE INTERESTS OF PANDUIT CORP.

PANDUIT PART NO.*	RECOMMENDED FASTENER	'A'	'B'	'C'	'D' ±0.010 ±(0.25)	'E' +0.020 +(0.51)	'F'	'G' 'REF'	'H' 'REF'	'I' 'REF'	USE WITH THESE CABLE TIE CROSS SECTIONS	WEIGHT (g) lbs/100 pcs.
TM2S8-100	#8 (M4) SCREW	0.590 (14.98)	0.378 (9.6)	0.271 (6.88)	0.215 (5.46)	0.058 (1.5)	0.152 (3.86)	0.102 (2.59)	0.332	0.176	MINIATURE INTERMEDIATE STANDARD	0.065 (29.5)



SECTION A-A

- NOTES:
- *1. SEE CURRENT PRICE SHEET FOR PART NUMBER SUFFIX DESIGNATION FOR PACKAGE SIZE.
 - *2. HOLE DIMENSIONS SHOULD ACCOMMODATE SPECIFIED RECOMMENDED FASTENER.

DIMENSIONS IN BRACKETS ARE METRIC [mm]

CAD FILENAME/LAYERS G00239CJ_PB_TM2S8_04

PANDUIT CORP.

TINLEY PARK, ILLINOIS

TIE MOUNT - TM2S8-100

UNLESS OTHERWISE SPECIFIED,
DIMENSIONAL TOLERANCES ARE:
(.X) ±0.05 (1.3) (,.XXX) ±0.020 (0.51)
(.XX) ± ANGLES ± 5°

UNLESS OTHERWISE SPECIFIED,
ALL DIMENSIONS ARE GIVEN
IN INCHES, THIRD ANGLE PROJECTION.

DRAWN BY MDE
DATE 3-07-96
CHK'D

MAT'L:
WEATHER RESISTANT POLYPROPYLENE

SCALE NONE

DRAWING NO. GB0239CJ
DWG SIZE A

REV	DATE	BY	CHK	DESCRIPTION	ECN	R	CUST	SUP
4	1-15-02	LGG		ADDED DIM 'H' & 'I' TO TABLE ADDED 'REF' TO DIM 'G'	GB0239CJ	4		
3	12-21-00	CGSM		REMOVED DIMS 'G' AND 'J', MADE DIM 'H' INTO 'G', ADDED NOTE 2	GB0239CJ	3		
2	11-15-99	JAD		Revised dimension A,C,D,F,H,& J	GB0239CJ	2		
1	6-12-97	JAD		REVISED DATE IN TITLE BLOCK	GB0239CJ	1		
R	03-07-96	MDE		INITIAL RELEASE	GB0239CJ	R		

X-ON Electronics

Largest Supplier of Electrical and Electronic Components

Click to view similar products for [Cable Tie Mounts](#) category:

Click to view products by [Panduit](#) manufacturer:

Other Similar products are found below :

[3-350087-0](#) [CTB75X75BKA-C](#) [561-EZAB580T](#) [561-EZS375B40](#) [561-TA250125](#) [08443-0](#) [10035-0](#) [561-TA00600](#) [1689174-1](#) [08445-0](#)
[10351-0](#) [561-TA250125B](#) [20015-0](#) [10350-0](#) [10029-0](#) [08484-0](#) [08446-0](#) [08318-0](#) [PAM075NY-A-C](#) [MTH1-3](#) [10044](#) [151-01802](#) [151-11319](#)
[151-11819](#) [PLWP1SB-D](#) [PLWP1M-C](#) [PLWP2SA-D](#) [PLWP2SB-D](#) [PLWP2S-C](#) [PLWP1S-D](#) [PLWP1M-D](#) [TA1S8-C](#) [ABM3H-A-L](#) [ABM3H-](#)
[AT-T0](#) [EMS-A-C0](#) [EMSK3-1-3-0](#) [10079](#) [151-10930](#) [151-10920](#) [3590](#) [151-28320](#) [151-28349](#) [151-28530](#) [151-10914](#) [151-10904](#) [151-10915](#)
[151-10916](#) [151-10906](#) [115-06960](#) [06297](#)