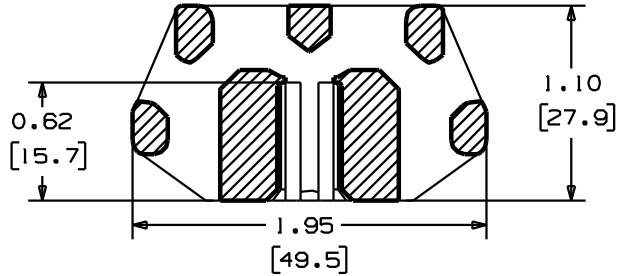
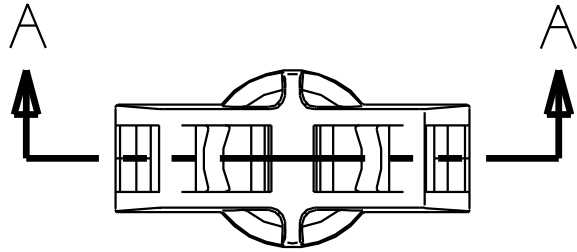
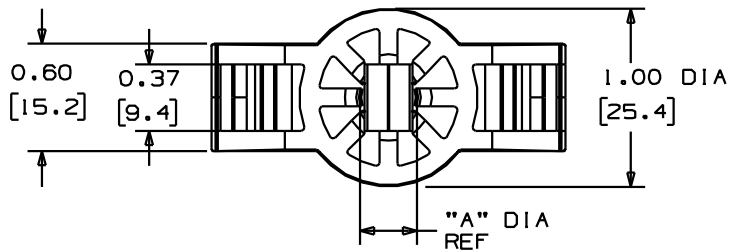


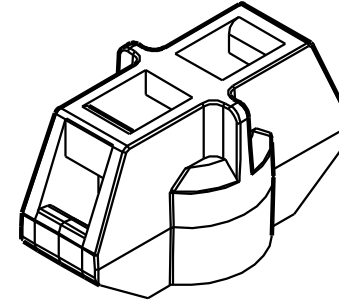
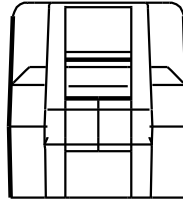
THIS COPY IS PROVIDED ON A RESTRICTED BASIS AND IS NOT TO BE USED IN ANY WAY DETRIMENTAL TO THE INTERESTS OF PANDUIT CORP.



SECTION A - A



PANDUIT PART NUMBER*	RECOMMENDED MOUNT STUD	MINIMUM INSTALLED STUD PROTRUSION	DIMENSION "A" REF	WEIGHT lbs/100 pcs (g)/100 pcs	FOR USE WITH THE FOLLOWING PANDUIT CABLE TIES
TMSTHS10	3/8" DIA M10	0.050 (12.7)	0.344 (8.7)	2.67 (1210)	MINIATURE INTERMEDIATE STANDARD LIGHT HEAVY HEAVY
TMSTHS11	7/16" DIA		.387 (9.8)	2.64 (1200)	
TMSTHS12	M12		0.433 (11.0)	2.60 (1180)	
TMSTHS13	1/2" DIA		0.476 (12.1)	2.54 (1150)	
TMSTHS16	5/8" DIA M16		0.610 (15.5)	2.39 (1090)	
TMSTHS19	3/4" DIA		0.727 (18.5)	2.31 (1050)	



*NOTES:

- SEE www.panduit.com FOR PART NUMBER SUFFIX DESIGNATION CONCERNING PACKAGE SIZE, PART MATERIAL AND PART COLOR.

DIMENSIONS IN BRACKETS ARE METRIC [mm]

TITLE TMSTHS TIE MOUNT FOR THREADED STUD		CUSTOMER DRAWING	
ITEM REVISION NAME G03597CS/03		PANDUIT	
DATASET FILE NAME G03597CS_DC_GB0239CY/10			
UNLESS OTHERWISE SPECIFIED, DIMENSIONAL TOLERANCES ARE: IN [mm]		MATERIAL: NYLON 6/6	
.x : 0.05 [1.3] .xxx : 0.010 [0.25]		DRAWING NUMBER: GB0239CY	
.xx : 0.02 [0.5] ANGLES : 5°		THIRD ANGLE PROJECTION	
DRAWN BY MLT	DATE 1/12/96	CHK	SCALE 1:1
DESCRIPTION		SHT 1 OF 1	
ECN		SIZE A	

REV	DATE	BY	CHK	APR	DESCRIPTION	ECN
10	10/29/13	BWG	MPH	RTF	REVISED OAL DIMENSION SEE ECN FOR FULL DETAILS.	GB0239CY/10

D101000A/16

X-ON Electronics

Largest Supplier of Electrical and Electronic Components

Click to view similar products for [Cable Tie Mounts](#) category:

Click to view products by [Panduit](#) manufacturer:

Other Similar products are found below :

[3-350087-0](#) [CTB75X75BKA-C](#) [561-EZAB580T](#) [561-EZS375B40](#) [561-TA250125](#) [08443-0](#) [10035-0](#) [561-TA00600](#) [1689174-1](#) [08445-0](#)
[10351-0](#) [561-TA250125B](#) [20015-0](#) [10350-0](#) [10029-0](#) [08484-0](#) [08446-0](#) [08318-0](#) [PAM075NY-A-C](#) [MTH1-3](#) [10044](#) [151-01802](#) [151-11319](#)
[151-11819](#) [PLWP1SB-D](#) [PLWP1M-C](#) [PLWP2SA-D](#) [PLWP2SB-D](#) [PLWP2S-C](#) [PLWP1S-D](#) [PLWP1M-D](#) [TA1S8-C](#) [ABM3H-A-L](#) [ABM3H-](#)
[AT-T0](#) [EMS-A-C0](#) [EMSK3-1-3-0](#) [10079](#) [151-10930](#) [151-10920](#) [3590](#) [151-28320](#) [151-28349](#) [151-28530](#) [151-10914](#) [151-10904](#) [151-10915](#)
[151-10916](#) [151-10906](#) [115-06960](#) [06297](#)