

# Threaded Stud Mounts

## specifications

Stud mounts used with heavy cable ties shall provide an economical method of replacing cushion clamps, pipe hangers, and other metal clamps used in heavy duty OEM and transportation equipment. The stud mount shall be hammered on or spun on existing weld studs, Huck-Spin\* bolts or exposed standard bolts. Optionally, the mount can be secured with Panduit® Sta-Strap® Chassis/Panel Mount Ties through the frame. The installed mount shall exceed the minimum loop tensile of the cable tie for which it is designed. The material shall be UV resistant and meet the application temperature and the recognized static ground storage requirements for heavy vehicles. The material shall be impact resistant and resist all common fuels, salt spray, and wash down chemicals.



## technical information

**Material:** Impact modified weather resistant Nylon 6.6

**Flammability:** Meets UL94 HB, passes FMVSS 302

**Color:** Black

**Application temperature range:** -60°C to 85°C (-76°F to 185°F) continuous

**Chemical resistance at 21°C (70°F):** Excellent resistance to common transportation fluids including: ethyl and methyl alcohol, ethylene glycol, diesel fuel, gasoline, jet fuel, hydraulic fluid, muriatic acid (wash down), transmission fluids, and 10% salt solutions

**Environmental compliance:** 2000/53/EC ELV, 2002/95/EC RoHS

**Anchor force:** Up to 300 pounds

## key features and benefits

<b>One-piece design</b>	Eliminates washers, nuts, and bolts; saving labor and materials for a lower installed cost
<b>Two-sided design</b>	Provides positive segregation of air, electrical, and pneumatic lines along the length of the chassis with easy access for one or two cable ties; allowing for easier installation, inspection, and service
<b>For use with heavy cable ties</b>	Provides up to 250 pounds of hold down force; safely securing hoses, wire bundles, and air lines
<b>Impact modified weather resistant Nylon 6.6</b>	Provides a longer service life; reducing maintenance and warranty issues
<b>Production Parts Approval Process (PPAP), 3-D, and International Materials Data Sheet (IMDS) capability</b>	Meets the needs of Verband der Automobilindustrie (VDA) and Automotive Industry Action Group (AIAG) compliant documentation; allowing parts to be listed in IMDS site ID

## applications

Panduit stud mounts are a reliable and cost-effective solution for using existing fasteners to route and secure heavy wire, cable, hydraulics and coolant hoses in the OEM, aerospace, marine, heavy truck and automotive markets. The mount becomes part of the chassis and no maintenance is required on the

mount itself. Designed as a two-sided mount, it doubles as an anchor and provides separation for two parallel bundles. Molded from rugged impact resistant materials, the mounts can be hammered on or used with the Panduit installation tool combined with any torque limited driver to easily spin on the mounts.

### Threaded Stud Mount

**10mm stud diameter:** TMSTHS10-D0

**12mm stud diameter:** TMSTHS12-D0

**1/2" stud diameter:** TMSTHS13-D0

**16mm stud diameter:** TMSTHS16-D0

**3/4" stud diameter:** TMSTHS19-D0

**6mm stud diameter:** TMSTLHS6-M0

**8mm stud diameter:** TMSTLHS8-M0

### Related Products

#### Cable Ties

##### Cross Section

**Standard:** PLT3S-C0

**Heavy:** PLT3H-L0

#### Sta-Strap® Chassis/Panel Mount Ties

##### Style

##### Without

**Centering Pilot:** SSPM4H-L300

##### With

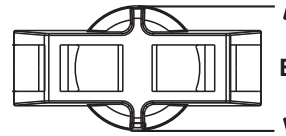
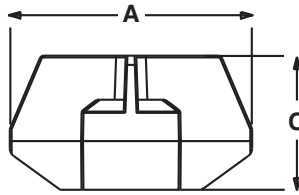
**Centering Pilot:** SSPM4HP-L300

\*Huck-Spin is a registered trademark of Huck International, Inc.

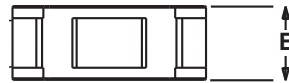
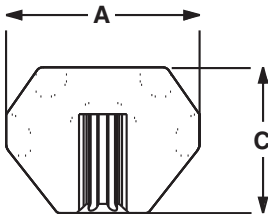
# Threaded Stud Mounts

## sizes and dimensions

Part Number	Used With Cable Ties	Mounting Method	Length A		Width B		Height C		Material	Color
			In.	mm	In.	mm	In.	mm		
TMSTHS10-D0	Miniature, Intermediate, Standard, Heavy-Standard, Light-Heavy, Heavy	10mm stud diameter	1.99	50.5	1.00	25.4	1.10	27.9	Impact Modified Weather Resistant Nylon 6.6	Black
TMSTHS12-D0		12mm stud diameter	1.99	50.5	1.00	25.4	1.10	27.9		
TMSTHS13-D0		1/2" stud dia. (13mm)	1.99	50.5	1.00	25.4	1.10	27.9		
TMSTHS16-D0		16mm stud diameter	1.99	50.5	1.00	25.4	1.10	27.9		
TMSTHS19-D0		3/4" stud dia. (19mm)	1.99	50.5	1.00	25.4	1.10	27.9		



Part Number	Used With Cable Ties	Mounting Method	Length A		Width B		Height C		Material	Color
			In.	mm	In.	mm	In.	mm		
TMSTLHS6-M0	Miniature, Intermediate, Standard, Heavy-Standard, Light-Heavy	6mm stud diameter	1.25	31.8	0.48	12.2	0.95	24.1	Impact Modified Weather Resistant Nylon 6.6	Black
TMSTLHS8-M0		8mm stud diameter	1.25	31.8	0.48	12.2	0.95	24.1		



### WORLDWIDE SUBSIDIARIES AND SALES OFFICES

PANDUIT CANADA  
Markham, Ontario  
cs-cdn@panduit.com  
Phone: 800.777.3300

PANDUIT EUROPE LTD.  
London, UK  
cs-emea@panduit.com  
Phone: 44.20.8601.7200

PANDUIT SINGAPORE PTE. LTD.  
Republic of Singapore  
cs-ap@panduit.com  
Phone: 65.6305.7575

PANDUIT JAPAN  
Tokyo, Japan  
cs-japan@panduit.com  
Phone: 81.3.6863.6000

PANDUIT LATIN AMERICA  
Guadalajara, Mexico  
cs-la@panduit.com  
Phone: 52.33.3777.6000

PANDUIT AUSTRALIA PTY. LTD.  
Victoria, Australia  
cs-aus@panduit.com  
Phone: 61.3.9794.9020

For a copy of Panduit product warranties, log on to [www.panduit.com/warranty](http://www.panduit.com/warranty)

For more information

Visit us at [www.panduit.com](http://www.panduit.com)

Contact Customer Service by email: [cs@panduit.com](mailto:cs@panduit.com)  
or by phone: 800.777.3300

**PANDUIT**<sup>®</sup>

©2013 Panduit Corp.  
ALL RIGHTS RESERVED.  
**WASP32--WW-ENG**  
Replaces WW-WASP09  
1/2013

## X-ON Electronics

Largest Supplier of Electrical and Electronic Components

*Click to view similar products for [Cable Tie Mounts](#) category:*

*Click to view products by [Panduit](#) manufacturer:*

Other Similar products are found below :

[3-350087-0](#) [CTB75X75BKA-C](#) [561-EZAB580T](#) [561-EZS375B40](#) [561-TA250125](#) [08443-0](#) [10035-0](#) [561-TA00600](#) [1689174-1](#) [08445-0](#)  
[10351-0](#) [561-TA250125B](#) [20015-0](#) [10350-0](#) [10029-0](#) [08484-0](#) [08446-0](#) [08318-0](#) [PAM075NY-A-C](#) [MTH1-3](#) [10044](#) [151-01802](#) [151-11319](#)  
[151-11819](#) [PLWP1SB-D](#) [PLWP1M-C](#) [PLWP2SA-D](#) [PLWP2SB-D](#) [PLWP2S-C](#) [PLWP1S-D](#) [PLWP1M-D](#) [TA1S8-C](#) [ABM3H-A-L](#) [ABM3H-](#)  
[AT-T0](#) [EMS-A-C0](#) [EMSK3-1-3-0](#) [10079](#) [10030](#) [151-10930](#) [151-10920](#) [3590](#) [151-28320](#) [151-28349](#) [151-28530](#) [151-10914](#) [151-10904](#) [151-](#)  
[10915](#) [151-10916](#) [151-10906](#) [115-06960](#)