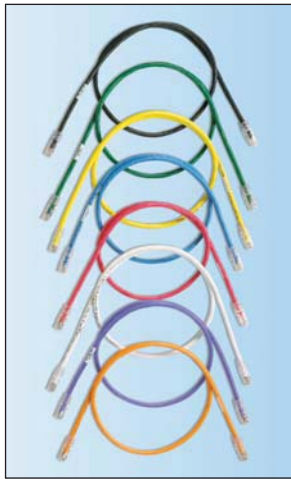


### **TX6A™ 10Gig™ UTP Patch Cords with MaTriX Technology**

- Exceed requirements of ANSI/TIA-568-C.2 Category 6A, IEEE 802.3an-2006, and ISO 11801 Class E<sub>A</sub> channel standards
- Meet requirements of IEEE 802.3af and IEEE 802.3at for PoE applications
- MaTriX Technology provides superior suppression of alien crosstalk (PSANEXT and PSAACRF)
- Superior headroom warranty provides the highest margins above the industry standard for both electrical and alien crosstalk performance
- Color-coded, keyed modular plugs mechanically and visually distinguish connections to prevent unintentional mating with unlike keyed or non-keyed jack modules accommodating more discrete networks
- Each patch cord is 100% performance tested and wired to T568B
- TX6A™ 10Gig™ constructed of 24 AWG stranded copper cable (nominal cable diameter 0.275 in.) and TX6™ PLUS Modular Plugs for superior performance
- TX6A-SD™ 10Gig™ constructed of 26 AWG stranded copper cable (nominal cable diameter 0.240 in.) and TX6 PLUS Modular Plugs for superior performance
- Plug meets all applicable ANSI/TIA-968-A requirements and exceeds IEC 60603-7 specifications
- Slender strain relief boot provides easy access in high density applications
- Plug uses an integral pair manager to optimize performance and consistency by reducing untwisting of conductors within the plug
- Plug performance in center of TIA/EIA component range, ensuring interoperability and 10GBASE-T Ethernet channel performance
- Labels on patch cords provide identification of performance level, length, and quality control number
- Patented tangle-free latch prevents snags and provides easy release, saving time on frequent moves, adds, and changes
- Optional patch cord color bands snap on and off individual patch cables offering endless color-coding options
- Optional RJ45 lock-in device blocks unauthorized removal of cable, IP phone, other networking equipment, or critical connection



Part Number	Part Description	Length (Ft.)	Cable Color	Std. Pkg. Qty.	Std. Ctn. Qty.
<b>TX6A™ 10Gig™ UTP Patch Cord (up to 100 meter solution)</b>					
UTP6A3 <sup>^</sup>	Category 6A, 10 Gb/s UTP patch cord with TX6A™ 10Gig™ Modular Plugs on each end. Includes patent pending MaTriX Tape Technology.	3	Blue	1	10
<b>TX6A-SD™ 10Gig™ UTP Patch Cord (up to 70 meter solution)</b>					
UTP6ASD3 <sup>‡</sup>	Category 6A (SD), 10 Gb/s UTP patch cord with TX6A™ 10Gig™ Modular Plugs on each end. Includes patent pending MaTriX Tape Technology.	3	Blue	1	50
<b>Keyed TX6A™ 10Gig™ UTP Patch Cord (up to 100 meter solution)</b>					
UTPK6A3BL <sup>*</sup>	Keyed, Category 6A, 10Gb/s UTP patch cord with TX6A™ 10Gig™ Keyed Modular Plug on one end and TX6A™ 10Gig™ Non-Keyed Modular Plug on the other end. Includes patent pending MaTriX Tape Technology.	3	Black	1	10

<sup>^</sup> For lengths 3 to 20 feet (increments of one foot) and 25, 30, 35, 40 feet, change the length designation in the part number to the desired length. For standard cable colors other than Off White, add suffix BL (Black), BU (Blue), RD (Red), YL (Yellow), GR (Green), YL (Yellow), OR (Orange), VL (Violet), or GY (Gray) to the part number. For example, the part number for a blue, 15-foot patch cord is UTP6A15BU.

<sup>‡</sup> For lengths 3 to 20 feet (increments of one foot) and 25, 30, 35, 40 feet, change the length designation in the part number to the desired length. For standard cable colors other than Off White, add suffix BL (Black), BU (Blue), RD (Red), YL (Yellow), GR (Green), YL (Yellow), OR (Orange) or VL (Violet) to the part number. For example, the part number for a blue, 15-foot patch cord is UTP6ASD15BU.

<sup>\*</sup> For lengths other than 3 feet (5, 7, 10, 14 feet), change the length designation in the part number to the desired length. For standard cable colors other than BL (Black), replace suffix BL (Black) with BU (Blue), RD (Red), YL (Yellow), GR (Green), or OR (Orange), each color representing a different keyed configuration. Contact customer service for universal reference patch cords

Patch cord color bands available on page B.91 of SA-NCCB51.

RJ45 plug lock-in device available on page B.89 of SA-NCCB51.

Must be installed as part of a complete TX6A™ 10Gig™ Copper Cabling System in order to achieve 10GBASE-T certified performance.

Reference page B.30 of SA-NCCB51 for appropriate labeling solution.

## X-ON Electronics

Largest Supplier of Electrical and Electronic Components

*Click to view similar products for [Ethernet Cables / Networking Cables](#) category:*

*Click to view products by [Panduit](#) manufacturer:*

Other Similar products are found below :

[0152660053](#) [603020002](#) [73-7797-25](#) [73-8890-10](#) [73-8890-14](#) [73-8891-14](#) [73-8891-25](#) [73-8892-50](#) [73-8894-10](#) [73-8894-3](#) [73-8895-14](#) [73-8896-7](#) [MCJB2-10P6Q7-120](#) [84909-0204](#) [9QA0-111-12-3.00](#) [1200650742](#) [1200700174](#) [1200860368](#) [1200650013](#) [1201080008](#) [1-21919-1](#) [1300500373](#) [1300101844](#) [1300101845](#) [130050-0004](#) [1300500014](#) [1410147](#) [E16A06002M030](#) [E200102-009-S1](#) [MT14-187L](#) [17-103530](#) [NK5EPC18RDY](#) [NK5EPC18VLY](#) [NK5EPC18YLY](#) [NK5EPC1GRY](#) [NK5EPC30BLY](#) [NK5EPC30VLY](#) [NK5EPC30YLY](#) [NK5EPC4Y](#) [NK5EPC6YLY](#) [NK5EPC8BLY](#) [NK5EPC9YLY](#) [NK6PC30BUY](#) [NK6PC30GRY](#) [NK6PC30RDY](#) [NK6PC30Y](#) [NK6PC30YLY](#) [1969343-6](#) [C501100010](#) [C501106002](#)