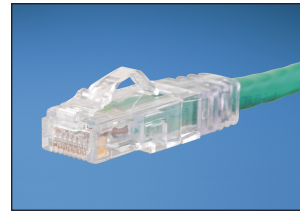


TX6™ PLUS UTP Patch Cords

specifications

Category 6/Class E, UTP patch cords shall be constructed of 24 AWG unshielded twisted pair stranded copper cable with an enhanced performance modular plug at each end. Patch cord cable shall be offered in multiple colored UTP cable for design flexibility with a clear strain relief boot on each modular plug. All patch cords shall be compatible with both T568A and T568B wiring schemes.



technical information

Category 6/Class E channel and component performance:	Exceeds all ANSI/TIA-568-C.2 Category 6 and ISO 11801 Class E Edition 2.1 standards for all frequencies from 1 to 250 MHz
Cable diameter:	0.235 in. (6.0mm) nominal
FCC and ANSI compliance:	Meets ANSI/TIA-1096-A; contacts plated with 50 microinches of gold for superior performance
IEC compliance:	Meets IEC 60603-7
UL rated:	UL 1863 approved
RoHS compliance:	Compliant
PoE compliance:	Meets IEEE 802.3af and IEEE 802.3at for PoE applications
Flammability rating:	CM or LSZH

key features and benefits

100% performance tested for wire map, NEXT and return loss	Confidence that each patch cord delivers specified performance
Centered de-embedded plug	Performs in center of ANSI/TIA-568-C.2 component range, ensuring interoperability and optimum performance
Integral pair manager	Optimizes performance and consistency by reducing untwist at plug
Patented tangle-free latch	Prevents snags and provides easy release, saving time on frequent moves, adds and changes
Slender strain relief boot	Provides easy access in high-density applications
Flexible stranded cable	U/UTP stranded 24 AWG copper cable with a nominal diameter of 0.235 inch allows for high density installations and superior panel cable management
Identification	Provides identification of performance level, length, and quality control number for future traceability
Variety of cable colors and lengths	Meets individual length and color-coding requirements for greater system flexibility
Robust construction	Rated to 2500 mating cycles
Keyed version available	Color-specific keys with positive and negative keying features mechanically and visually distinguish connections to prevent unintentional mating with unlike keyed or non-keyed jack modules, offering network design flexibility, versatility accommodating discrete networks for enhanced security
Color bands (optional)	Snap onto cable, allowing additional color-coding options
RJ45 plug lock-in device (optional)	Secures plug into jack to prevent unauthorized removal of patch cord

applications

TX6™ PLUS UTP Patch Cords are a component of TX6500™ and TX6000™ Copper Cabling Systems. Interoperable and backward compatible, these end-to-end systems provide design flexibility to protect network investments well into the future. With certified performance to the ANSI/TIA-568-C.2 Category 6 and ISO 11801 Class E Edition 2.1 standards, these systems are ideal for today's high performance workstation applications. With certified performance to the ANSI/TIA-568-C.2 Category 6 and ISO 11801 Class E Edition 2.1 standards, these

systems will support the following applications:

- Ethernet 10BASE-T, 100BASE-T (Fast Ethernet), 1000BASE-T (Gigabit Ethernet), 10GBASE-T (10Gigabit Ethernet over limited distances as specified in the industry 10GBASE-T standards)
- 155 Mb/s ATM, 622 Mb/s ATM, 1.2 Gb/s ATM
- Token ring 4/16
- Digital video and broadband/baseband analog video
- Voice over Internet Protocol (VoIP)

www.panduit.com

TX6500™ and TX6000™ UTP Copper Cabling System

TX6™ PLUS UTP Patch Cords

CM (foot lengths): UTPSP**Y
CM (meter lengths): UTPSP**MY
LSZH (meter lengths): UTPSPL**MY

Mini-Com® TX6™ PLUS UTP Jack Module

Jack module: CJ688TG***
Shuttered jack module: CJD688TG***M

TX6500™ UTP Copper Cable

Riser: PUR6504^UY
Plenum: PUP6505^UY

TX6000™ UTP Copper Cable

LSZH: PUL6004^
CM: PUC6004^

Mini-Com® Angled Modular Patch Panels

24-port, 1 RU: CPPLA24WBLY
48-port, 2 RU: CPPLA48WBLY

Mini-Com® Flat Modular Patch Panels

24-port, 1 RU: CPPL24WBLY
48-port, 2 RU: CPPL48WBLY

For additional modular and punchdown patch panels, visit www.panduit.com.

Tools and Accessories

Patch cord removal tool: PCRT1
Flashlight kit: KPCRT-FL
Patch cord band: PCBAND^^-Q
Standard RJ45 plug lock-in device: PSL-DCPLX^^^
Recessed RJ45 plug lock-in device: PSL-DCPLRX^^^

*For lengths 1 to 20 feet (increments of one foot) and 25, 30, 35, 40 feet, change the length designation in the part number to the desired length. For standard cable colors other than Off White, add suffix BL (Black), BU (Blue), GR (Green), RD (Red), YL (Yellow), OR (Orange) or VL (Violet) before the Y at the end of the part number. For example, the part number for a blue 15-foot patch cord is UTPSP15BUY.

**For lengths 1 to 10 meters (increments of 1 meter) and 0.5, 1.5, 2.5, 15, 20, 25, 30, 35, 40 meters, change the length designation in the part number to the desired length. For standard cable colors other than Off White, add suffix BL (Black), BU (Blue), GR (Green), RD (Red), YL (Yellow), OR (Orange) or VL (Violet) after the M in the part number. For example, the part number for a blue 15 meter patch cord is UTPSP15MBUY.

***To designate color add suffix IW (Off White), EI (Electric Ivory), WH (White), IG (International Gray), OR (Orange), RD (Red), BU (Blue), GR (Green), YL (Yellow) or VL (Violet).

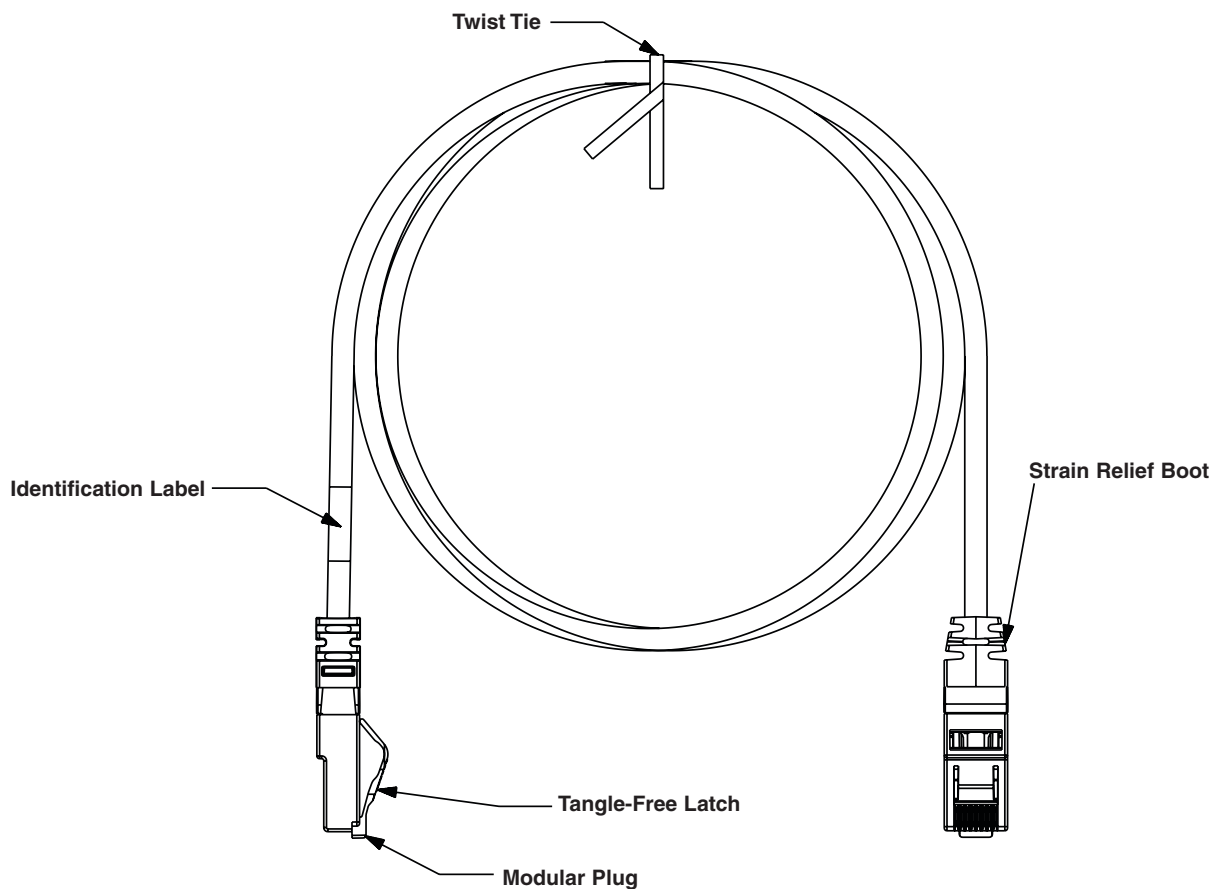
^To designate color, add suffix BU (Blue), WH (White), YL (Yellow) or IG (International Gray).

^^To designate color, add suffix WH (White), EI (Electric Ivory), IG (International Gray), BL (Black), BU (Blue), RD (Red), YL (Yellow), GR (Green), OR (Orange) or VL (Violet) before -Q in the part number. 25/package.

^^^For colors other than Red, -BL (Black), -BU (Blue), -GR (Green), -YL (Yellow), -IW (Off White), or -IG (International Gray) to the end of the part number. 10/package. Add -C for bulk packages of 100.

Contact customer service for keyed connectivity, bulk packaged jack modules and patch cords.

TX6™ PLUS UTP Patch Cords



T568B Wiring Scheme

Plug Position	Cable Wire
1	White/Orange
2	Orange
3	White/Green
4	Blue
5	White/Blue
6	Green
7	White/Brown
8	Brown

WORLDWIDE SUBSIDIARIES AND SALES OFFICES

PANDUIT CANADA
Markham, Ontario
cs-cdn@panduit.com
Phone: 800.777.3300

PANDUIT EUROPE LTD.
London, UK
cs-emea@panduit.com
Phone: 44.20.8601.7200

PANDUIT SINGAPORE PTE. LTD.
Republic of Singapore
cs-ap@panduit.com
Phone: 65.6305.7575

PANDUIT JAPAN
Tokyo, Japan
cs-japan@panduit.com
Phone: 81.3.6863.6000

PANDUIT LATIN AMERICA
Guadalajara, Mexico
cs-la@panduit.com
Phone: 52.33.3777.6000

PANDUIT AUSTRALIA PTY. LTD.
Victoria, Australia
cs-aus@panduit.com
Phone: 61.3.9794.9020

For a copy of Panduit product warranties, log on to www.panduit.com/warranty

For more information

Visit us at www.panduit.com

Contact Customer Service by email: cs@panduit.com
or by phone: 800.777.3300 and reference COSP51

PANDUIT®

©2012 Panduit Corp.
ALL RIGHTS RESERVED.
COSP51--WW-ENG
10/2012

X-ON Electronics

Largest Supplier of Electrical and Electronic Components

Click to view similar products for [Ethernet Cables / Networking Cables](#) category:

Click to view products by [Panduit](#) manufacturer:

Other Similar products are found below :

[73-6670-7](#) [73-6680-15](#) [73-7797-25](#) [MCJB2-10P6Q7-120](#) [84909-0204](#) [1200700174](#) [1200860368](#) [E16A06002M030](#) [E200102-009-S1](#)
[AX105346-EW](#) [MT14-187L](#) [17-103530](#) [ERWPAB3002M005](#) [190-038045-01](#) [NK5EPC18RDY](#) [NK5EPC18VLY](#) [NK5EPC18YLY](#)
[NK5EPC1GRY](#) [NK5EPC4Y](#) [NK5EPC6YLY](#) [NK5EPC8BLY](#) [NK5EPC9YLY](#) [1969343-6](#) [C501100010](#) [C501106002](#) [C501106007](#)
[C501106015](#) [C501106025](#) [C601102010](#) [C601104010](#) [C601106007](#) [C601106015](#) [2142758-2](#) [2168427-2](#) [CAT1106007](#) [21949-1](#) [2J1866A](#)
[RJF SFTP 5E 0500](#) [AX100351](#) [MN14CEC/ST](#) [C501100015](#) [C501106004](#) [C501106010](#) [C5F1108007](#) [C601104004](#) [C601106004](#)
[CA21106004](#) [CA21106010](#) [CA21106015](#) [CA21109007](#)