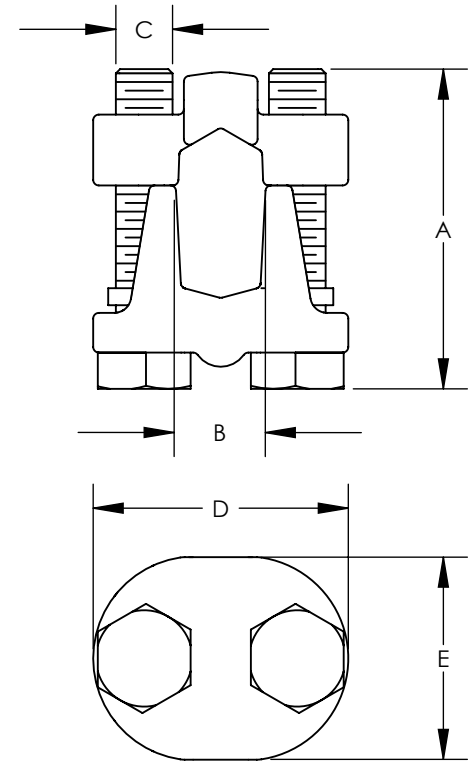


THIS COPY IS PROVIDED ON A RESTRICTED BASIS AND IS NOT TO BE USED IN ANY WAY DETRIMENTAL TO THE INTERESTS OF PANDUIT CORP.

| PART NUMBER | A BOLT LENGTH | APPROXIMATE DIMENSIONS | | | |
|-------------|---------------------|------------------------|------|-----------------|-----------------|
| | | B | C | D | E |
| VTA-0-Q | 1-1/4 [32] | 13/32 [10.3] | 5/16 | 1-7/16 [37] | 15/16 [24] |
| VTA-1-Q | 1-1/2 [38] | 1/2 [12.7] | 5/16 | 1-9/16 [40] | 1-1/8 [29] |
| VTA-2-Q | 1-3/4 [44] | 19/32 [15] | 3/8 | 1-27/32 [47] | 1-11/32 [34] |
| VTA-3-12 | 2 [51] | 3/4 [19] | 1/2 | 2-5/16 [59] | 1-5/8 [41] |
| VTA-4-12 | 2-1/4 [57] | 7/8 [22.2] | 1/2 | 2-7/16 [62] | 1-11/16 [43] |
| VTA-5-6 | 2-1/2 [64] | 1-1/16 [26.9] | 1/2 | 2-11/16 [68] | 1-7/8 [48] |
| VTA-6-6 | 2-3/4 [70] | 1-1/4 [31.7] | 5/8 | 3-1/16 [78] | 2-1/4 [57] |

NOTES:

1. MATERIAL: TIN PLATED BRONZE CASTING
2. U.L. LISTED WITH COPPER CONDUCTORS



| PART NUMBER | MAXIMUM CONDUCTORS | | | | | MAXIMUM WIRE DIAMETER |
|-------------|--------------------|------------|-------------------|----------|-------|-----------------------|
| | COPPER | | COPPER WELD SOLID | ALUMINUM | | |
| | SOLID | STR. | | AWG. | ACSR. | |
| VTA-0-Q | 2/0 | 1/0 | 2/0 | 1/0 STR | 1 | 0.375 |
| VTA-1-Q | 3/0 | 2/0 | 3/0 | --- | --- | 0.419 |
| VTA-2-Q | 4/0 | 4/0 | 4/0 | --- | --- | 0.528 |
| VTA-3-12 | --- | 350 kcmil | --- | --- | --- | 0.682 |
| VTA-4-12 | --- | 500 kcmil | --- | --- | --- | 0.815 |
| VTA-5-6 | --- | 800 kcmil | --- | --- | --- | 1.031 |
| VTA-6-6 | --- | 1000 kcmil | --- | --- | --- | 1.153 |

| REV | DATE | BY | CHK | APR | DESCRIPTION | ECN |
|-----|------|------|------|-----|---|-----------------|
| 02 | 7/15 | JHNU | JHNU | RGB | REVISED PART NUMBER: VTA-1-Q WAS VRA-1-Q | N41209BB-C41209 |
| 01 | 5/15 | JHNU | JHNU | RGB | REMOVED MADE IN U.S.A. NOTE REVISED TITLE BLOCK CONVERTED DRAWING TO SOLIDWORKS | N41209BB-C41209 |

| | |
|--|---------------------------|
| TITLE BRONZE TAPS - 2 BOLT CONNECTOR VTA SERIES CUSTOMER DRAWING | |
| ITEM REVISION NAME | N41209BBAA/02 |
| DATASET FILE NAME | N41209BB-C41209/02.SLDDRW |
| UNLESS OTHERWISE SPECIFIED, DIMENSIONAL TOLERANCES ARE: IN [mm] | |
| .X ± | .XXX ± |
| .XX ± 1/8" [3.2] | ANGLES ± |
| THIRD ANGLE PROJECTION | |
| DRAWING NUMBER C41209 | |
| DRAWN BY T SMA | DATE 2/97 |
| CHK | SCALE NONE |
| SHEET 1 OF 1 | |
| SIZE A | |



MATERIAL
SEE NOTES

X-ON Electronics

Largest Supplier of Electrical and Electronic Components

Click to view similar products for [Cable Mounting & Accessories](#) category:

Click to view products by [Panduit](#) manufacturer:

Other Similar products are found below :

[582603-1](#) [009333-000](#) [727844N003](#) [747](#) [809090N001](#) [843188-000](#) [8666](#) [967279N002](#) [DB-11](#) [1300840039](#) [1300900096](#) [1301800416](#)
[1302264450](#) [1300830184](#) [1300830729](#) [1300900039](#) [1301580036](#) [1301850553](#) [1301860939](#) [1302000074](#) [1302261315](#) [1302264431](#)
[1337706-2](#) [APA18-AK](#) [1724](#) [1-787307-1](#) [185491N001](#) [1868](#) [HP-6N](#) [C-202-C](#) [202C221-13-0](#) [CA7308-000](#) [8S23-75FR-CS8184](#) [2684](#) [9648](#)
[3089](#) [988382-000](#) [A72821-000](#) [AA401](#) [173506-000](#) [1823](#) [202C292-13-0](#) [202C302-13-0](#) [2109](#) [300625](#) [3330](#) [3412](#) [356247-1](#) [M9142](#)
[M9143](#)