



Mini-Com® 12-Port Modular Faceplate Patch Panels

- Release snap feature on faceplate allows simple front access for termination and accessibility to installed modules
- Mount directly onto wall
- Accept Mini-Com® Modules for UTP, fiber optic, and audio/video, which snap in and out for easy moves, adds, and changes
- Modular design for easy cabling revisions



CWPP12WBL



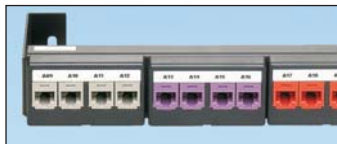
CPP12WBL



WB89D

Part Number	Part Description	Std. Pkg. Qty.	Std. Ctn. Qty.
CWPP12WBL	12-port patch panel supplied with three factory installed CFFP4 snap-in faceplates with integrated wall mount bracket.	1	10
CPP12WBL	12-port patch panel supplied with three factory installed CFFP4 snap-in faceplates. Mounts to standard 89D bracket (WB89D).	1	10
WB89D	Wall mount bracket accepts 12-port snap-in faceplate patch panel. Can also be used to mount industry standard 66 blocks.	1	10

Component Labels for Mini-Com® 12-Port Modular Faceplate Patch Panels



Suggested Label Solutions for TIA/EIA-606-A Compliance

Patch Panel Part Number	Laser/Ink Jet Desktop Printer Label	TDP43ME Thermal Transfer Desktop Printer Label	PanTher™ LS8E Hand-Held Printer Label	Cougar™ LS9 Hand-Held Printer Label
CWPP12WBL CPP12WBL	C261X030FJJ	C261X030YPT	C261X030FJC	T031X000FJC-BK

For complete labeling solutions and product information, reference charts on pages O.1 – O.22 of SA-NCCB51.

X-ON Electronics

Largest Supplier of Electrical and Electronic Components

Click to view similar products for [Racks & Rack Cabinet Accessories](#) category:

Click to view products by [Panduit](#) manufacturer:

Other Similar products are found below :

[M00-PLN](#) [F2424](#) [8351-832-A-24](#) [9104](#) [9105](#) [PLFF2000](#) [H-9163-B](#) [1427C3](#) [HTS10](#) [PC-79](#) [SC10-3A](#) [SC4-28](#) [CG3-340S/12](#) [CP-001BK](#)
[M6123-4007-SS](#) [AX61400TB](#) [TS170](#) [LP40](#) [5261304-07](#) [CG3-160G](#) [7112C-PLN](#) [ALUM](#) [CM10](#) [8610-3124-S-26](#) [TS81](#) [7142](#) [GP134](#)
[M6125-4007-A-24](#) [M6127-4007-SS](#) [PBCOVER](#) [512](#) [AEG-4000G](#) [AEG-3000G](#) [HD99](#) [SR2-66A2](#) [FP10B4HP-1](#) [FP52-2](#) [1406-1006-01](#)
[29478](#) [TS2535](#) [TS169-6](#) [CAC2](#) [HA19-3U](#) [BR-19-10-1](#) [TS180](#) [CG3-ESD](#) [SC11-1](#) [CFS-1.00/2.20](#) [AX6145WM](#) [HEC0800PB](#) [ZC633R](#)