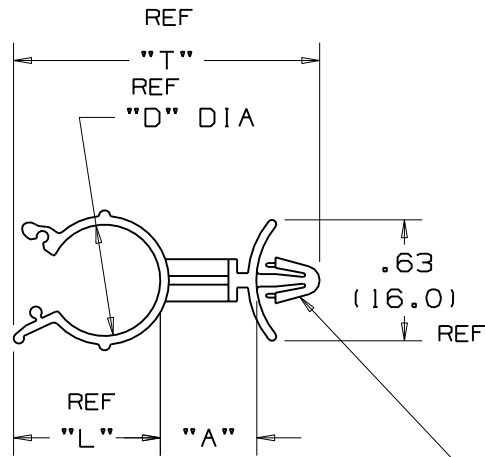
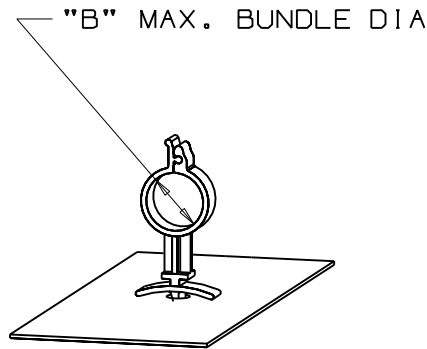
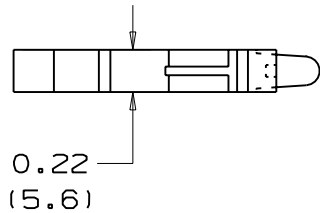


THIS COPY IS PROVIDED ON A RESTRICTED BASIS AND IS NOT TO BE USED IN ANY WAY DETRIMENTAL TO THE INTERESTS OF PANDUIT CORP.



PANDUIT PART NO.	"A" in/mm	"L" in/mm REF	"D" in/mm REF	"T" in/mm REF	"B" MAX. BUNDLE DIA. in/mm	WEIGHT lbs. 100 (g) pcs
WS25-25	0.25(6.4)	0.46(11.7)	0.30(7.6)	1.04(26.4)	0.25(6.4)	0.11(50)
WS25-50	0.50(12.7)	0.46(11.7)	0.30(7.6)	1.29(32.8)	0.25(6.4)	0.13(59)
WS25-75	0.75(19.1)	0.46(11.7)	0.30(7.6)	1.54(39.1)	0.25(6.4)	0.15(68)
WS35-25	0.25(6.4)	0.57(14.5)	0.42(10.7)	1.15(29.2)	0.35(8.9)	0.12(54)
WS35-50	0.50(12.7)	0.57(14.5)	0.42(10.7)	1.40(35.6)	0.35(8.9)	0.14(64)
WS35-75	0.75(19.1)	0.57(14.5)	0.42(10.7)	1.65(41.9)	0.35(8.9)	0.16(73)
WS50-25	0.25(6.4)	0.72(18.3)	0.58(14.7)	1.30(33.0)	0.47(11.9)	0.14(64)
WS50-50	0.50(12.7)	0.72(18.3)	0.58(14.7)	1.55(39.4)	0.47(11.9)	0.16(73)
WS50-75	0.75(19.1)	0.72(18.3)	0.58(14.7)	1.80(45.7)	0.47(11.9)	0.18(82)
WS75-25	0.25(6.4)	1.07(27.2)	0.96(24.4)	1.65(41.9)	0.78(19.8)	0.16(73)
WS75-50	0.50(12.7)	1.07(27.2)	0.96(24.4)	1.90(48.3)	0.78(19.8)	0.18(82)
WS75-75	0.75(19.1)	1.07(27.2)	0.96(24.4)	2.15(54.6)	0.78(19.8)	0.20(91)

FITS 0.187(4.7)/0.192(4.8) DIA. HOLE  
PANEL THK. 0.03(0.8)/0.08(2.0)



NOTES:

- SEE CURRENT PRICE SHEET FOR PART NUMBER SUFFIX DESIGNATION FOR PACKAGE SIZE AND COLOR.

(DIMENSIONS IN PARENTHESES ARE IN METRIC.)

CAD FILENAME/LAYERS

G00239CT\_PB\_WCS\_03



TINLEY PARK, ILLINOIS

WIRE CLIP STANDOFF

REV	DATE	BY	CHK	DESCRIPTION	ECN	R	CUST	SUP
3	1/25/06	JAD		REMOVED 'M' FROM END OF EACH PART NO.	GB0239CT	3		
2	6/27/01	LGG		UPDATED FOR WEB (ADDED REF)	GB0239CT	2		
1	7/31/95	CBJ		ADDED NOTE	GB0239CT	1		
R	7/26/95	CBJ		INITIAL RELEASE	GB0239CT	R		

UNLESS OTHERWISE SPECIFIED, DIMENSIONAL TOLERANCES ARE:  
(.X) ±0.1(2.5) (.XXX) ±0.020(1.5)  
(.XX) ±0.05(1.3) ANGLES ±5°

UNLESS OTHERWISE SPECIFIED, ALL DIMENSIONS ARE GIVEN IN INCHES, THIRD ANGLE PROJECTION.

DRAWN BY CBJ  
DATE 7/26/95  
CHK'D

MAT'L:  
NYLON 6/6

SCALE  
DRAWING NO. GB0239CT  
DWG SIZE A

## X-ON Electronics

Largest Supplier of Electrical and Electronic Components

*Click to view similar products for [Cable Mounting & Accessories](#) category:*

*Click to view products by [Panduit](#) manufacturer:*

Other Similar products are found below :

[582603-1](#) [009333-000](#) [727844N003](#) [747](#) [809090N001](#) [843188-000](#) [8666](#) [967279N002](#) [DB-11](#) [1300840039](#) [1300900096](#) [1301800416](#)  
[1302264450](#) [1300830184](#) [1300830729](#) [1300900039](#) [1301580036](#) [1301850553](#) [1301860939](#) [1302000074](#) [1302261315](#) [1302264431](#)  
[1337706-2](#) [APA18-AK](#) [1724](#) [1-787307-1](#) [185491N001](#) [1868](#) [HP-6N](#) [C-202-C](#) [202C221-13-0](#) [CA7308-000](#) [8S23-75FR-CS8184](#) [2684](#) [9648](#)  
[3089](#) [988382-000](#) [A72821-000](#) [AA401](#) [173506-000](#) [1823](#) [202C292-13-0](#) [202C302-13-0](#) [2109](#) [300625](#) [3330](#) [3412](#) [356247-1](#) [M9142](#)  
[M9143](#)