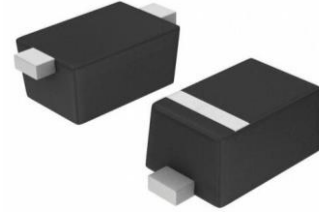


Surface Mount Schottky Barrier Rectifier

Features

- Low Turn-on Voltage
- Fast Switching
- PN Junction Guard Ring for Transient and ESD Protection
- Designed for Surface Mount Application
- Classification 94V-O

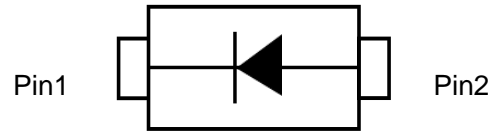
SOD-123FL Surface Mount



SOD-123FL

Mechanical Date

- **Case:** SOD-123FL, Molded Plastic
- **Terminals:** Plated Leads Solderable per MIL-STD-202, Method 208
- **Polarity:** Cathode Band
- **Weight:** 0.017 grams (approx.)



Circuit Diagram

Absolute Maximum Ratings (T_A = 25°C unless otherwise noted)

Characteristic	Symbol	SS12 D1F	SS14 D1F	SS16 D1F	SS18 D1F	SS110 D1F	UNIT
Peak Repetitive Reverse Voltage Working Peak Reverse Voltage DC Blocking Voltage	V _{RRM} V _{RWM} V _R	20	40	60	80	100	V
Forward Continuous Current	I _F	1.0					A
Non-Repetitive Peak Forward Surge Current 8.3ms Single half sine-wave superimposed on rated load (JEDEC Method)	I _{FSM}	25					A
Power Dissipation	P _d	450					mW
Operating and Storage Temperature Range	T _J , T _{STG}	-65 to +125					°C

Electrical Characteristics (T_A = 25°C unless otherwise noted)

Characteristic	Symbol	SS12 D1F	SS14 D1F	SS16 D1F	SS18 D1F	SS110 D1F	UNIT
Forward Voltage Drop @I _F = 1.0A	V _{FM}	0.45	0.55	0.55	0.70	0.85	V
Peak Reverse Leakage Current @ V _{RRM}	I _{RM}	500					µA
Typical Junction Capacitance	C _J	50					pF

Typical Performance Characteristics ($T_A=25^\circ\text{C}$ unless otherwise Specified)

Fig 1. Forward Current Derating Curve

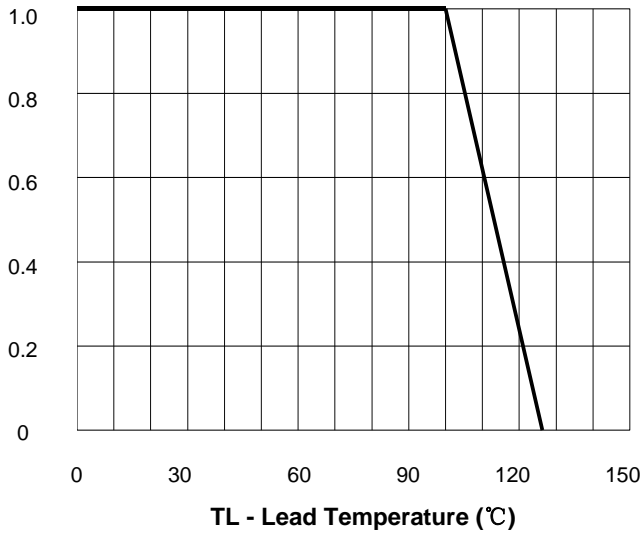


Fig 2. Maximum Non-Repetitive Peak Forward Surge Current

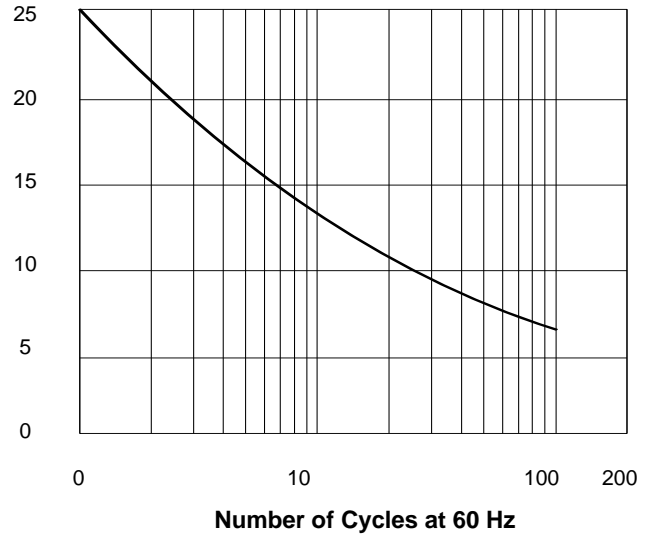


Fig 3. Typical Instantaneous Forward

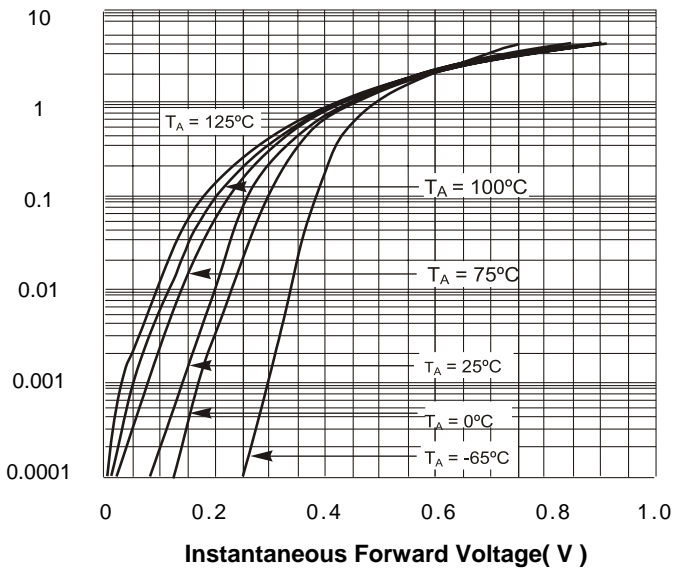
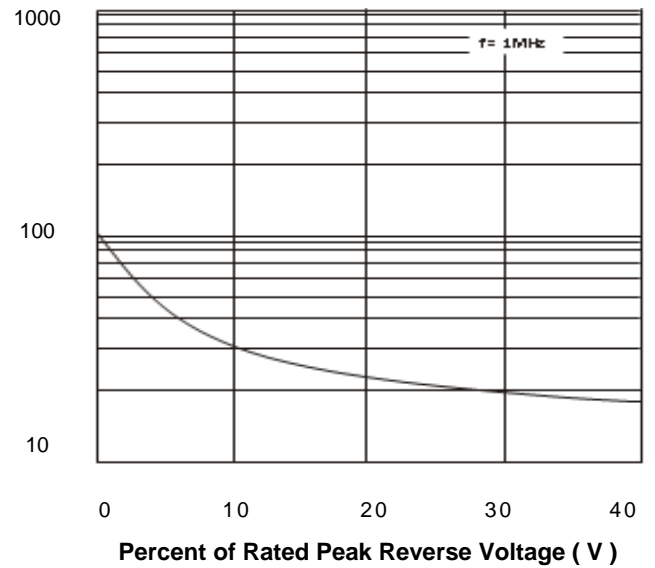
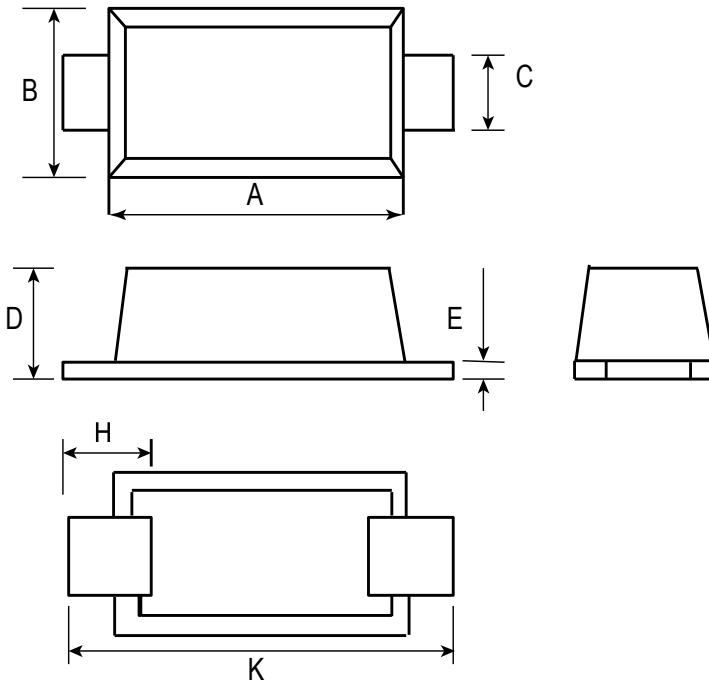


Fig 4. Typical Reverse Leakage Characteristics

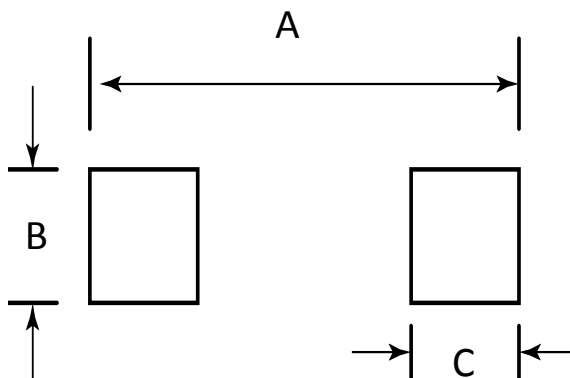


SOD-123FL Package Outline Drawing



DIM	Millimeters		
	Min	Nom	Max
A	2.70	2.80	2.90
B	1.80	1.90	2.00
C	0.80	1.00	1.20
D			1.40
E	0.10	0.20	0.30
H	0.35		0.85
K	3.50		3.90

Suggested Land Pattern



SYM	DIMENSIONS	
	MILLIMETERS	INCHES
A	4.19	0.165
B	1.20	0.048
C	0.90	0.036

X-ON Electronics

Largest Supplier of Electrical and Electronic Components

Click to view similar products for [Schottky Diodes & Rectifiers](#) category:

Click to view products by [Panjit](#) manufacturer:

Other Similar products are found below :

[CUS06\(Te85L,Q,M\)](#) [MA4E2039](#) [D1FH3-5063](#) [MBR0530L-TP](#) [MBR10100CT-BP](#) [MBR30H100MFST1G](#) [MMBD301M3T5G](#) [PMAD1103-LF](#) [PMAD1108-LF](#) [RB160M-50TR](#) [RB520S-30](#) [RB551V-30](#) [DD350N18K](#) [DZ435N40K](#) [DZ600N16K](#) [BAS16E6433HTMA1](#) [BAS 3010S-02LRH E6327](#) [BAT 54-02LRH E6327](#) [IDL02G65C5XUMA1](#) [NSR05F40QNXT5G](#) [NSVR05F40NXT5G](#) [JANS1N6640](#) [SB07-03C-TB-H](#) [SB1003M3-TL-W](#) [SBAT54CWT1G](#) [SBM30-03-TR-E](#) [SBS818-TL-E](#) [SK32A-LTP](#) [SK33A-TP](#) [SK34A-TP](#) [SK34B-TP](#) [SMD1200PL-TP](#) [ACDBN160-HF](#) [SS3003CH-TL-E](#) [STPS30S45CW](#) [PDS3100Q-7](#) [GA01SHT18](#) [CRS10I30A\(Te85L,QM\)](#) [MBR1240MFST1G](#) [MBRB30H30CT-1G](#) [BAS28E6433HTMA1](#) [BAS 70-02L E6327](#) [HSB123JTR-E](#) [JANTX1N5712-1](#) [VS-STPS40L45CW-N3](#) [DD350N12K](#) [SB007-03C-TB-E](#) [SB10015M-TL-E](#) [SB1003M3-TL-E](#) [SK110-LTP](#)