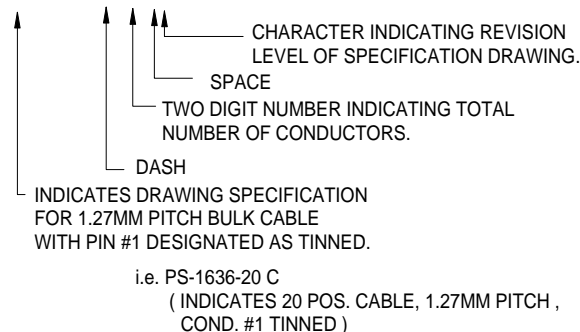


### PROPRIETARY INFORMATION NOTICE

This document and the designs, specifications, and engineering information disclosed herein are the property of Parlex USA LLC, and are not to be disseminated or reproduced without expressed written consent. This document is loaned in confidence and then only for consideration of the matter disclosed hereon. In accepting loan of this document, the recipient agrees to keep it and the matter disclosed hereon in confidence and not to use or permit their use in any way detrimental to Parlex USA LLC.

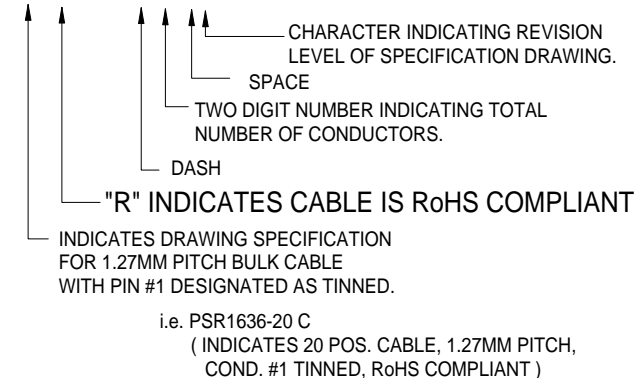
### Non RoHS Part Numbering System

PS-1636-XX C



### RoHS Part Numbering System

PSR1636-XX C



- 1) BULK CABLE SPECIFICATION FOR 1.27MM PITCH FLAT LAMINATED CABLE.
- 2) NUMBER OF CONDUCTORS AVAILABLE 1 THROUGH 99
- 3) CONDUCTOR NUMBER 1 IS DISTINGUISHED FROM REMAINING CONDUCTORS BY TIN PLATING. IT IS VISIBLE, AS SUCH, THROUGH POLYESTER INSULATION.
- 4) INSULATION: 0.002" THICK POLYESTER WITH FLAME RETARDANT ADHESIVE.
- 5) CONDUCTORS: 0.003" X 0.026" FLAT COPPER, POS. #1 IS TIN PLATED (30 AWG EQUIVALENT)
- 6) U.L. RATING: AWM STYLE 2643, 105°C, VW-1, 300V
- 7) CURRENT RATING: 2.5A MAXIMUM
- 8) DIELECTRIC STRENGTH: 2500V/MIL
- 9) WHEN ORDERING, USE PART NUMBERING SYSTEM DESCRIBED TO DETERMINE NUMBER OF CONDUCTORS REQUIRED
- 10) CABLE WIDTH= (NUMBER OF CONDUCTORS + 1 ) X 0.050"



SPECIFICATION DRAWING FOR BULK CABLE, 1.27MM PITCH, COND. #1 TINNED, MATCHING STANDARD AMP REQUIREMENTS FOR .050" CENTERLINE FFC

SIZE	FSCM	PS-1636	Rev.
B	18377		C
SCALE	NA		SHEET 1 OF 1

## X-ON Electronics

Largest Supplier of Electrical and Electronic Components

*Click to view similar products for [Flat Cables](#) category:*

*Click to view products by [Parlex](#) manufacturer:*

Other Similar products are found below :

[0002813](#) [0047106](#) [0048000](#) [0049005](#) [0049009](#) [0050009](#) [0051005](#) [0281000624](#) [033F30V96CR](#) [050F28V10CR](#) [050R10-102B](#) [050R10-152B](#)  
[050R10-51B](#) [050R10-76B](#) [050R12-127B](#) [050R15-102B](#) [050R15-127B](#) [050R15-152B](#) [050R15-76B](#) [050R20-102B](#) [050R20-51B](#) [050R22-](#)  
[102B](#) [050R22-51B](#) [050R24-102B](#) [050R24-76B](#) [050R26-51B](#) [050R30-102B](#) [050R30-152B](#) [050R30-51B](#) [050R30-76B](#) [050R36-127B](#)  
[050R36-152B](#) [050R36-51B](#) [050R40-102B](#) [050R40-127B](#) [050R40-152B](#) [050R40-51B](#) [050R40-76B](#) [050R4-51B](#) [050R50-102B](#) [050R50-152B](#)  
[050R50-76B](#) [050R5-152B](#) [050R6-51B](#) [050R8-102B](#) [050R8-76B](#) [09180067001](#) [09180097001](#) [09180097005](#) [09180097007](#)