

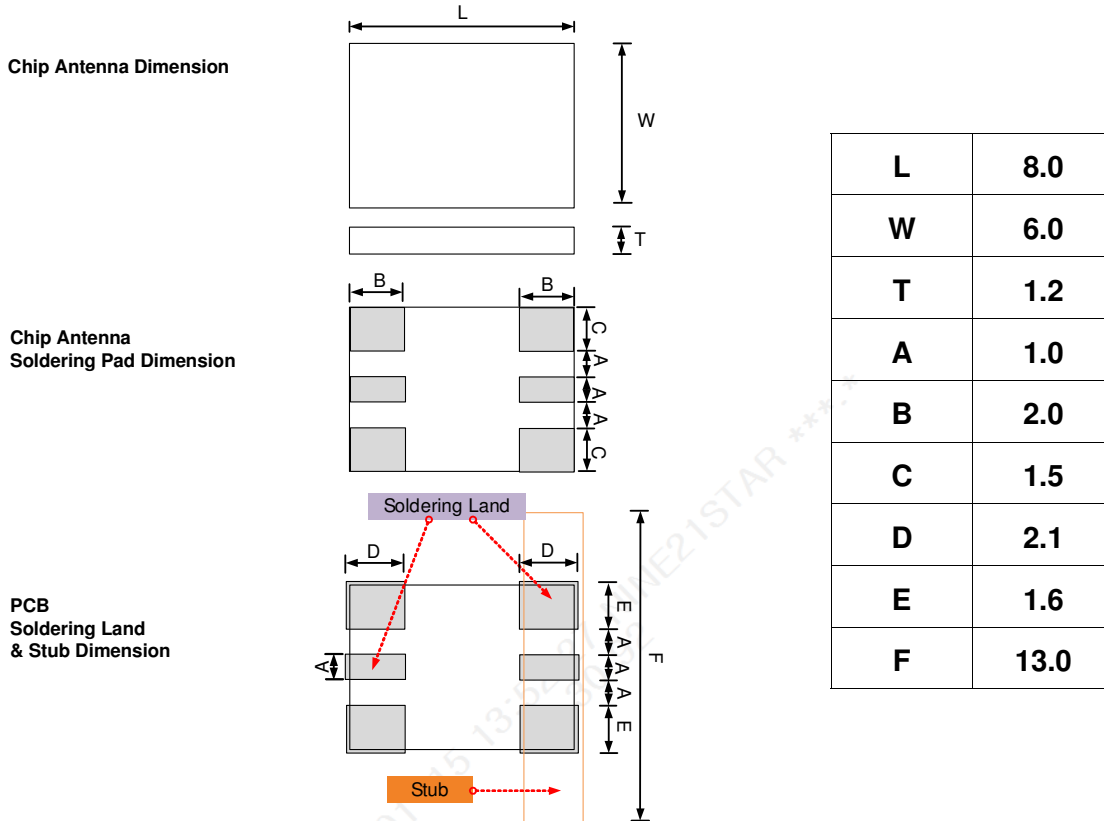
Dielectric Chip Antenna



■ P/N : ACS5200HFAUWB

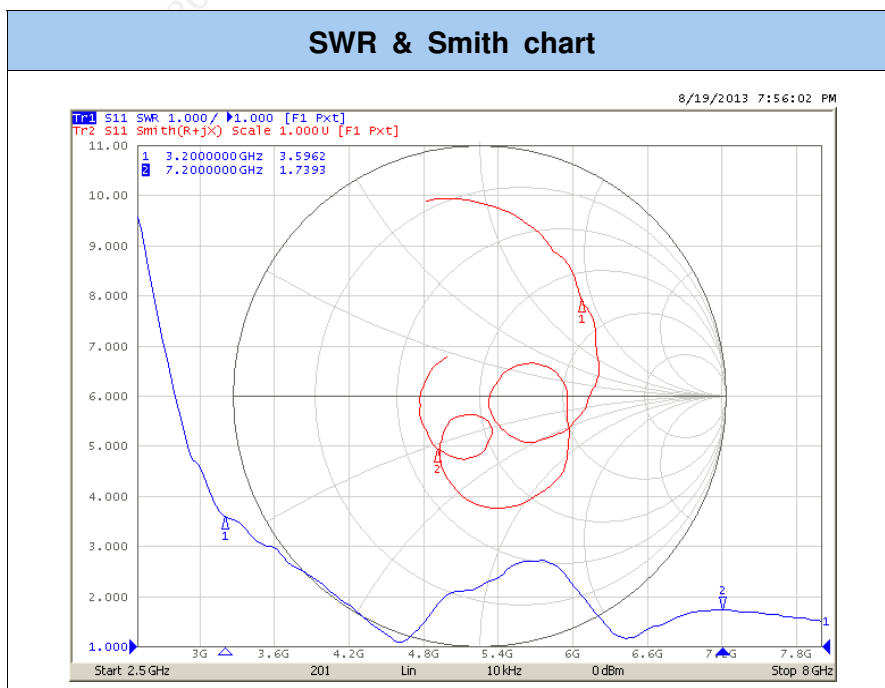
This specification covers the dielectric chip antenna ACS5200HFAUWB used in 3200~7200MHz Wireless Communication.

■ MECHANICAL DIMENSION (unit : mm, tolerance : ± 0.1)



■ ELECTRICAL CHARACTERISTICS

SWR[**MAX**] 5.0:1(Typ 4.0:1)

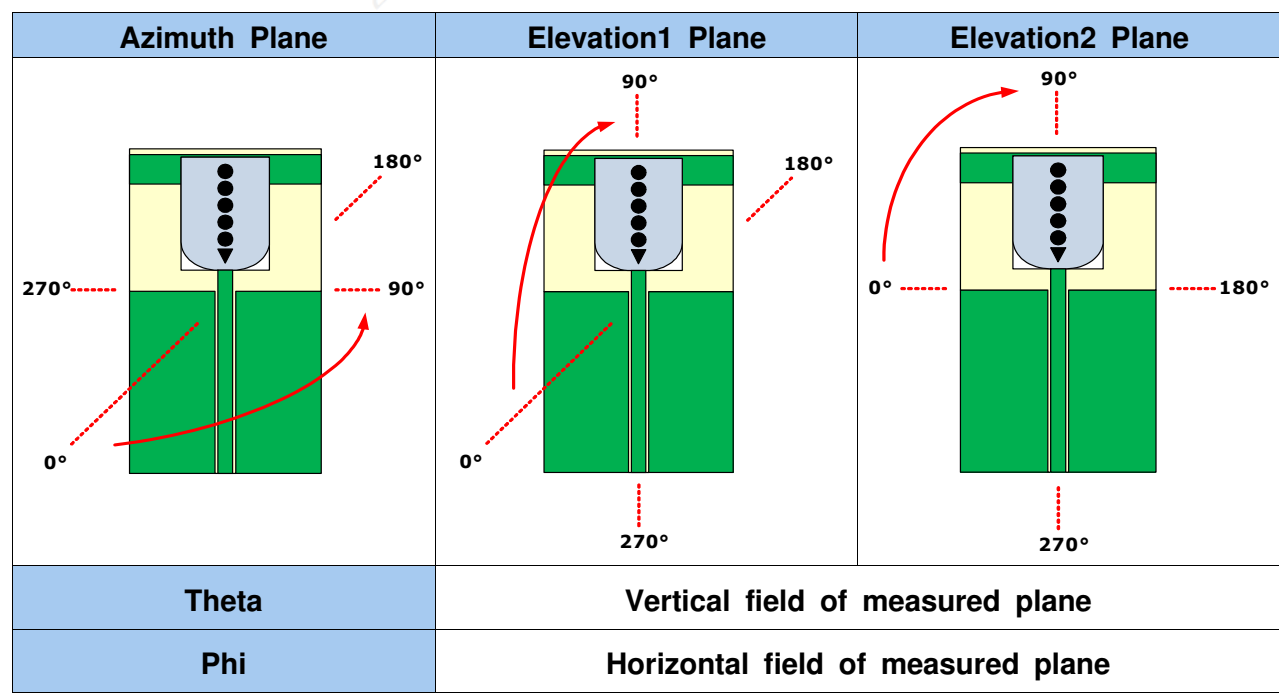


Dielectric Chip Antenna



■ ELECTRICAL CHARACTERISTICS (2D)

2D Measurement								
Frequency [MHz]			3200	4200	5200	6200	7200	
Gain	Azimuth	Theta	Peak	-0.88	2.73	2.51	4.16	1.31
			Average	-4.26	-1.22	-1.88	-1.10	-4.82
			Efficiency	37.50	75.50	64.86	77.62	32.96
		Phi	Peak	-3.84	-2.16	-1.91	-2.61	-5.20
			Average	-9.61	-8.20	-8.16	-9.96	-11.63
			Efficiency	10.96	15.13	15.27	10.09	6.87
	Elevation 1	Theta	Peak	-5.05	-2.32	-1.03	0.30	-0.68
			Average	-10.36	-8.84	-7.90	-6.99	-8.06
			Efficiency	9.20	13.06	16.21	19.99	15.63
		Phi	Peak	-2.99	1.98	1.81	2.92	0.20
			Average	-6.65	-3.30	-3.37	-3.04	-3.71
			Efficiency	21.62	46.77	46.02	49.65	42.55
	Elevation 2	Theta	Peak	-5.83	-3.38	-2.05	0.26	-3.56
			Average	-10.76	-9.16	-7.01	-5.74	-8.27
			Efficiency	8.39	12.13	19.90	26.66	14.89
		Phi	Peak	-0.52	2.23	1.52	1.39	1.12
			Average	-5.23	-3.30	-3.66	-3.90	-4.74
			Efficiency	29.99	46.77	43.05	40.73	33.57

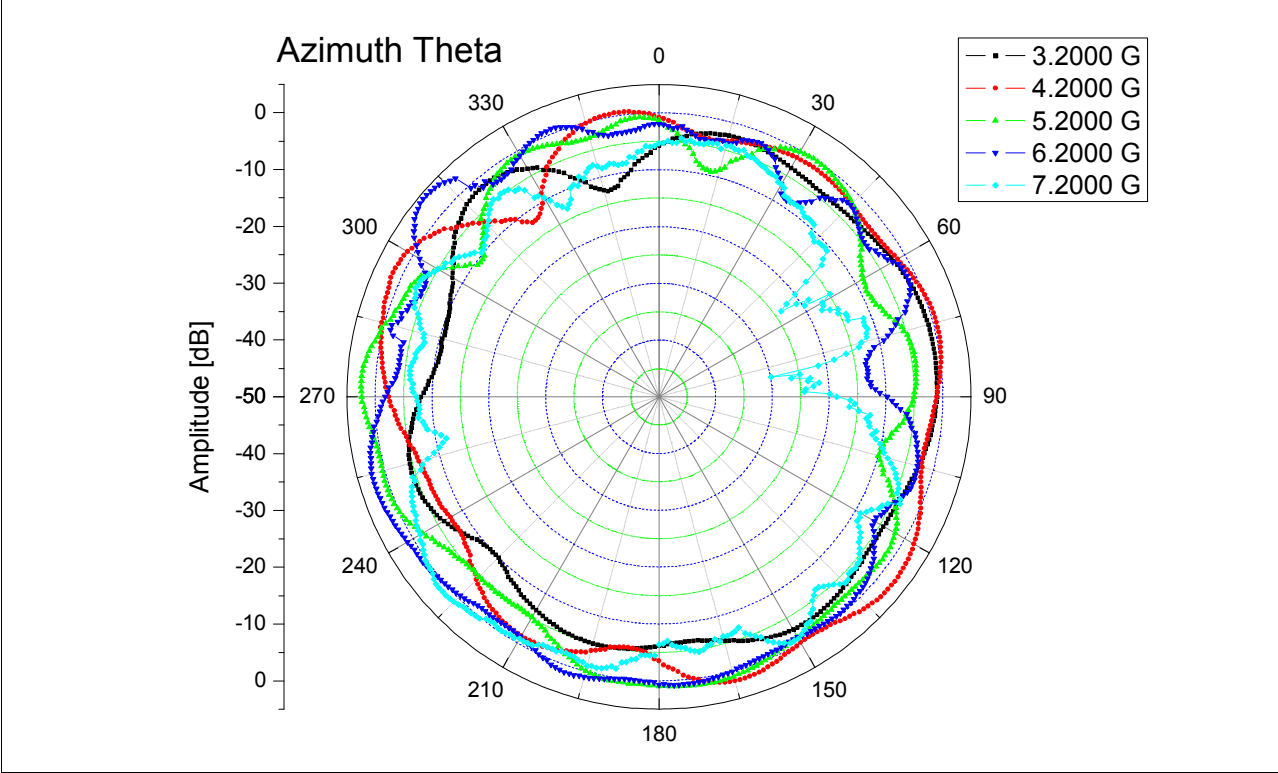


Dielectric Chip Antenna

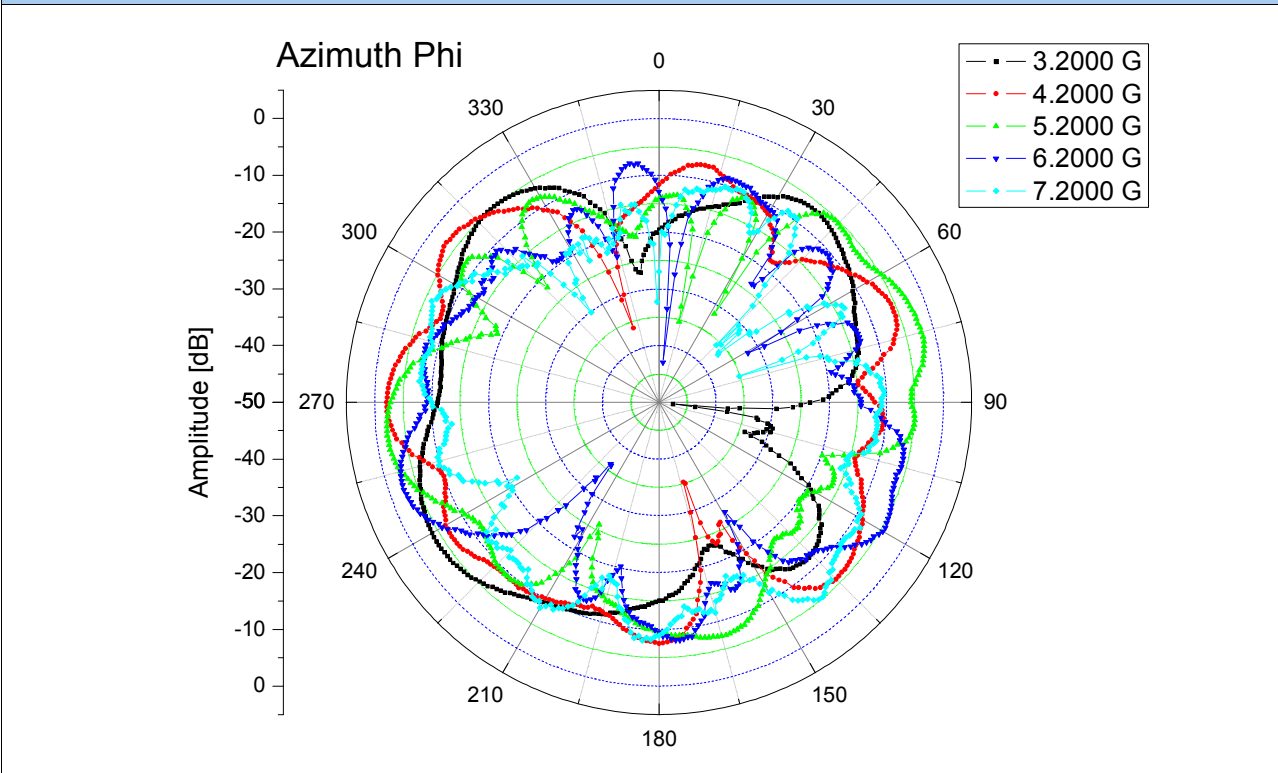


2D RADIATION PATTERN

Azimuth Theta



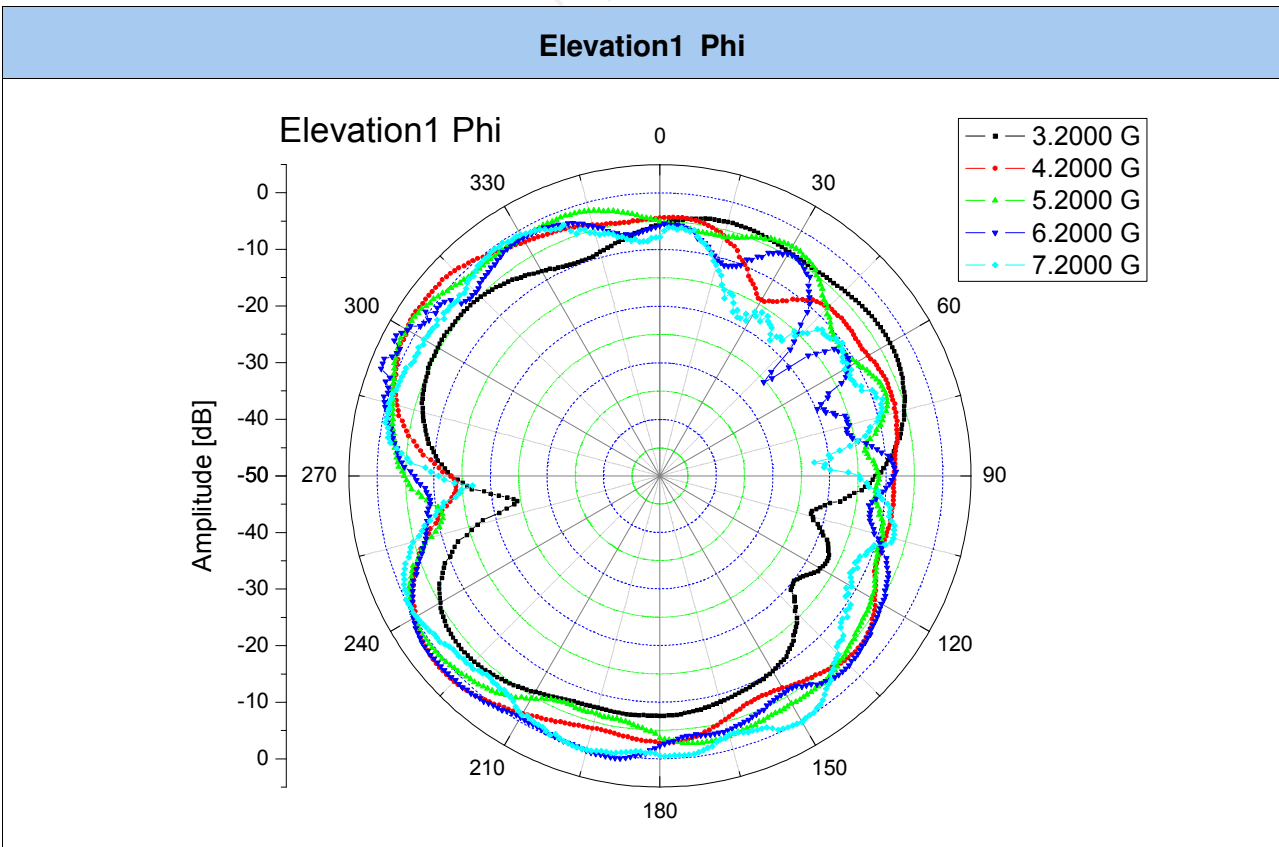
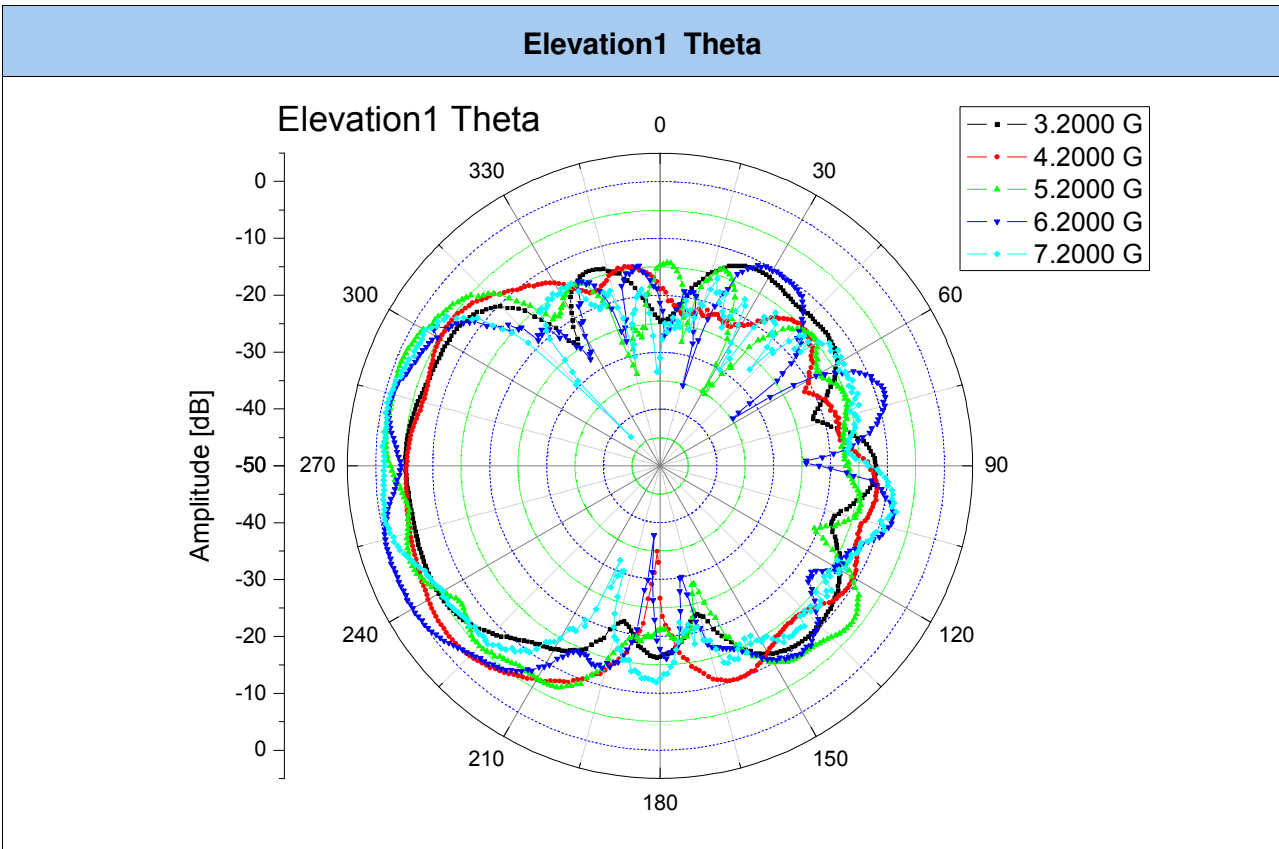
Azimuth Phi



Dielectric Chip Antenna



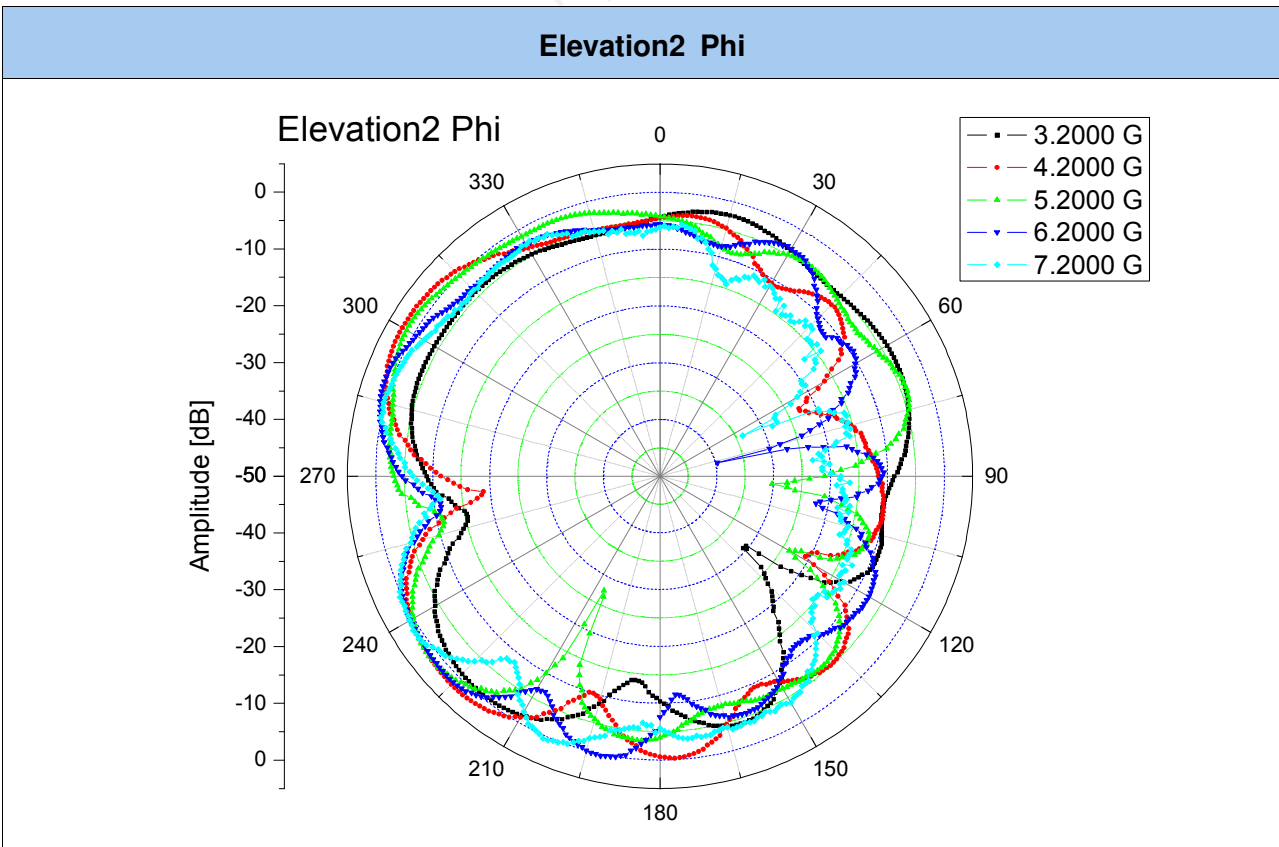
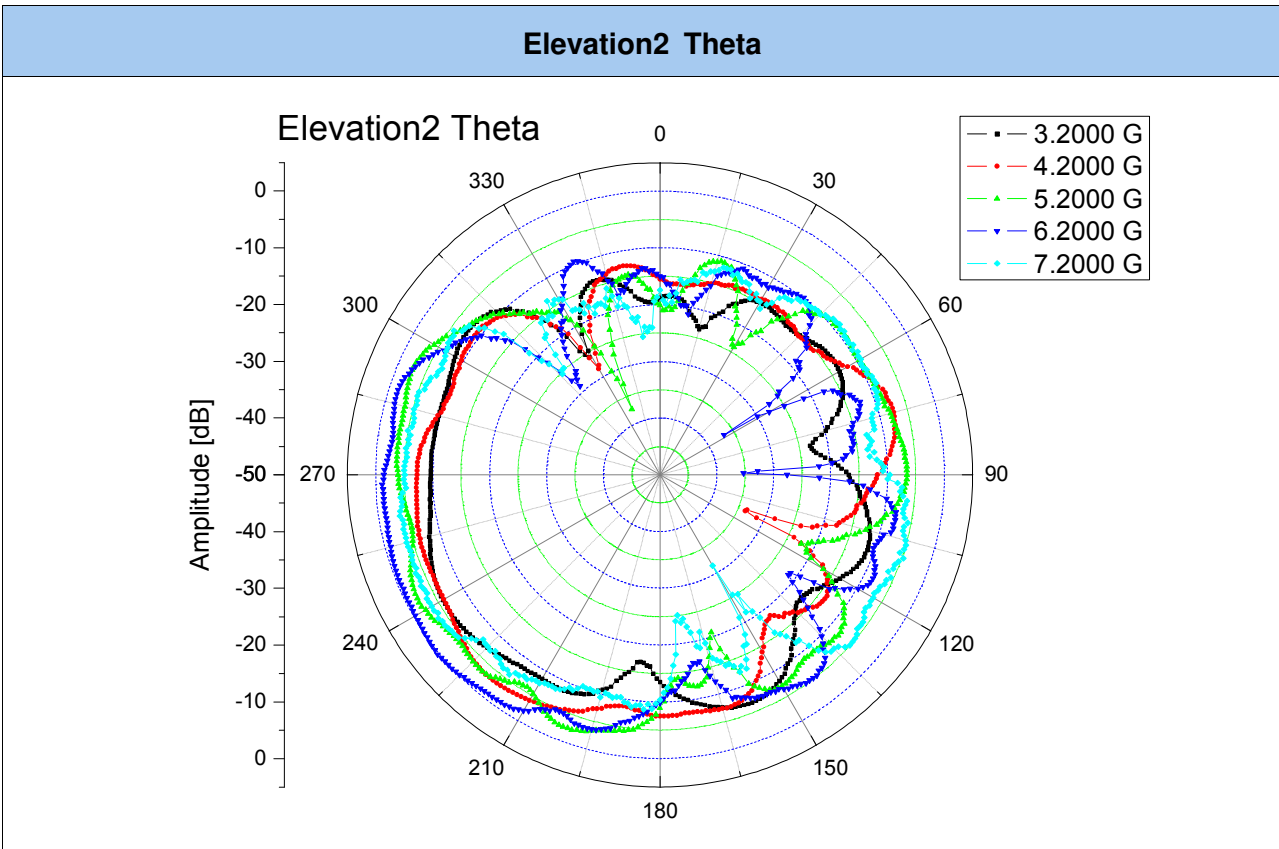
2D RADIATION PATTERN



Dielectric Chip Antenna



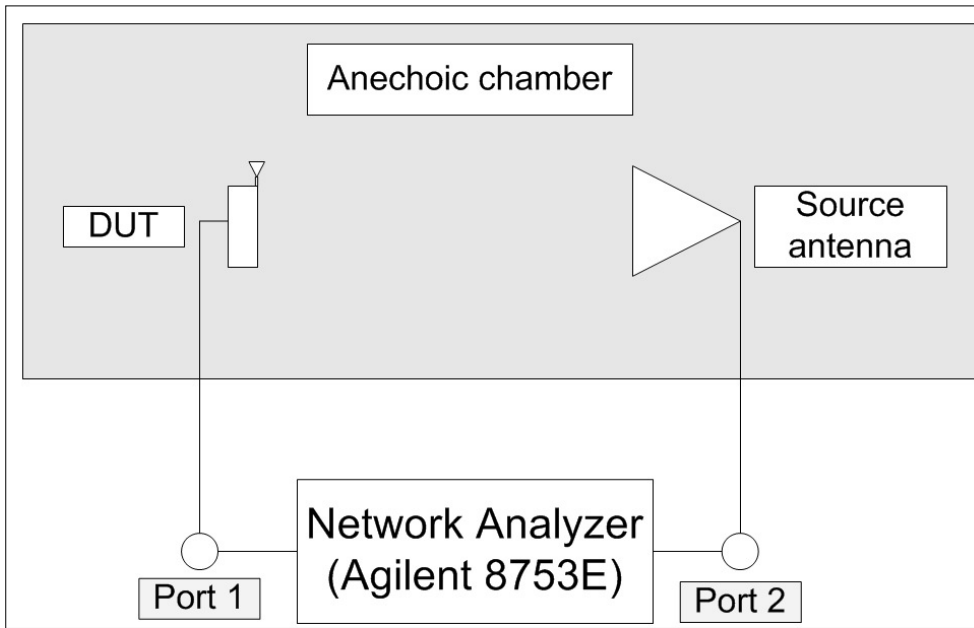
2D RADIATION PATTERN



Dielectric Chip Antenna

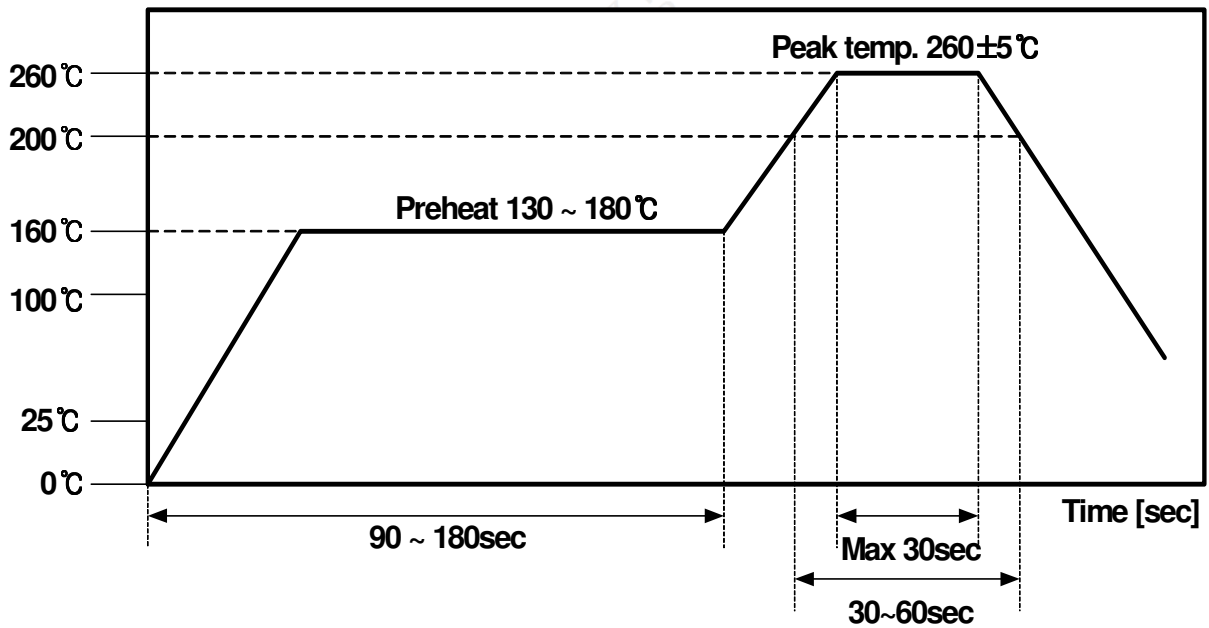


Gain Measurement block diagram



Soldering Condition - Reflow Soldering

- Reflow Soldering



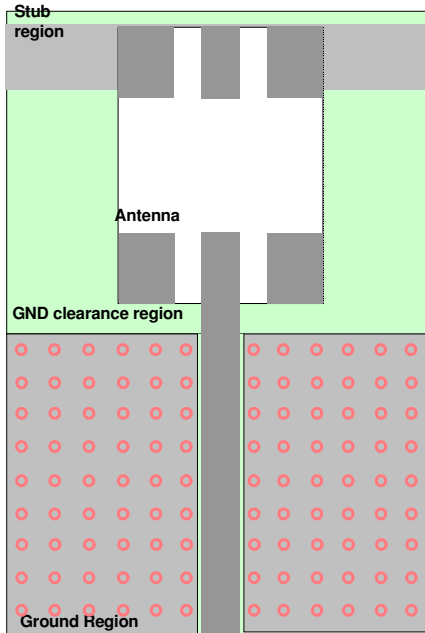
- Manual Soldering

	Condition
Pre-Heating Temperature	120°C , 60 ~ 300 sec
Soldering Temperature	340°C ± 5°C , 5 sec max per each terminal

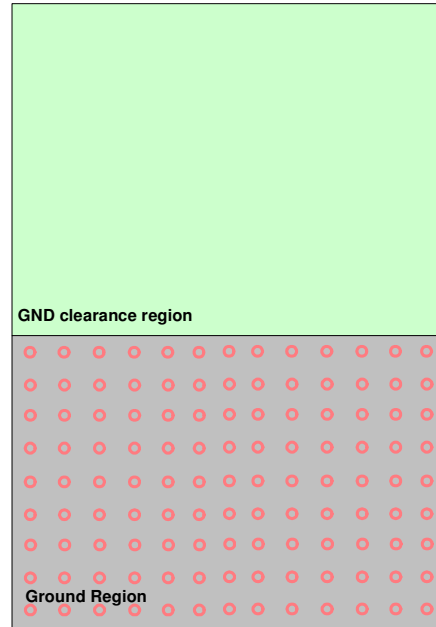
Dielectric Chip Antenna



FEEDING METHOD (unit : mm, tolerance : ± 0.05)

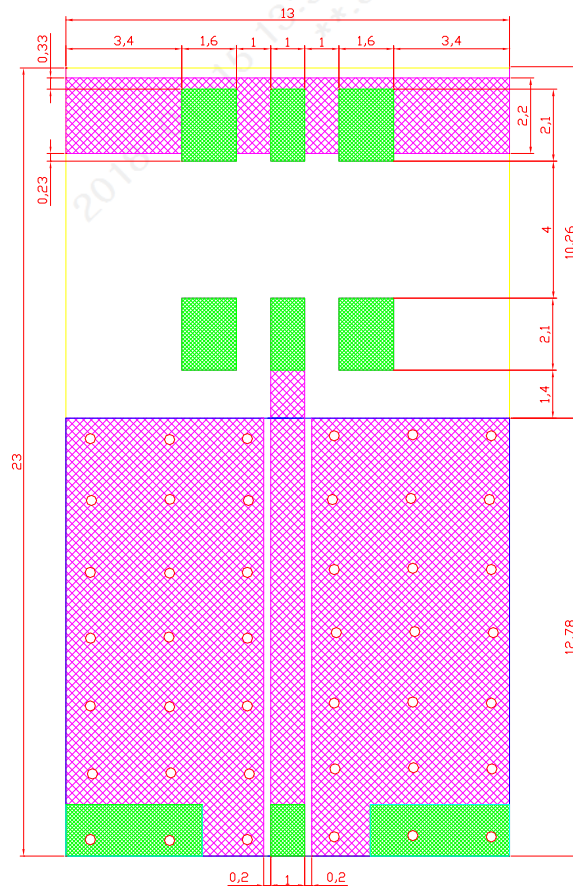


< Top View >



< Bottom View >

Recommended Test Board(CAD)

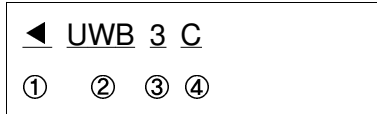


Unit : mm
Board thickness : 1.0mm

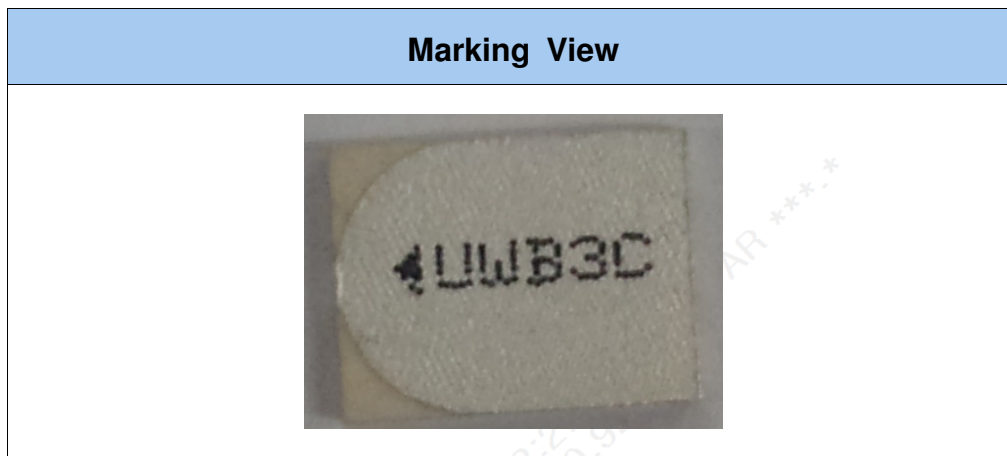
Dielectric Chip Antenna



■ LOT & Marking



- ① Feeding Direction
- ② Model
- ③ year : 0 - 2010, 1 - 2011, 2 - 2012, 3 - 2013, 4 - 2014, ⋯⋯
- ④ Month : 1-January, 2-February, ⋯⋯, A-October, B-November, C-December



■ Temperature Condition

	Range of Temperature	unit
Application	-40 ~ +100	℃
Keeping	-40 ~ +70	℃

X-ON Electronics

Largest Supplier of Electrical and Electronic Components

Click to view similar products for [Antennas](#) category:

Click to view products by [Partron](#) manufacturer:

Other Similar products are found below :

[GAN30084EU](#) [930-033-R](#) [1513563-1](#) [EXE902SM](#) [APAMPG-117](#) [MAF94383](#) [W6102B0100](#) [108-00014-50](#) [66089-2406](#) [SPDA17RP918](#)
[A09-F5NF-M](#) [RGFRA1903041A1T](#) [108-00016-050](#) [W3921B0100](#) [SIMNA-868](#) [SIMNA-915](#) [SIMNA-433](#) [W1049B090](#) [TRABT1560](#) [A75-](#)
[001](#) [W3118A](#) [WTL2449CQ1-FRSMM](#) [CPL9C](#) [0600-00060](#) [GD5W-28P-NF](#) [MA9-7N](#) [GD53-25](#) [C37](#) [MAF94051](#) [FRX380](#) [MA9-5N](#)
[B1322NR](#) [QWFTB120](#) [MAF94271](#) [MAF94300](#) [GPSMB301](#) [FG4403](#) [PSQ24495-91RSM](#) [5200232](#) [MIKROE-2393](#) [DA5-32RADOME](#)
[5200227](#) [GPSCPMM00](#) [W1049B030](#) [SPDA17RP918](#) [GPSCP00](#) [AN 303](#) [ANTDOM-05-01-WPM](#) [EXW30BNX](#)
[OSCAR1A/5M/SMAM/S/S/31](#)