



SMP Female to SMP Female Adapter 12.6mm Long Bullet

TECHNICAL DATA SHEET

PE9776

SMP Female to SMP Female Adapter 12.6mm Long Bullet

Configuration

Connector 1	SMP Female
Impedance 1	50 Ohms
Connector Specification 1	MIL-STD-348A
Connector 2	SMP Female
Impedance 2	50 Ohms
Connector Specification 2	MIL-STD-348A
Adapter Design	Standard
Body Style	Straight

Electrical Specifications

Frequency Range, GHz	DC to 26.5
Maximum Operating Voltage, Volts	335
Dielectric Withstanding Voltage, Vrms	500

Frequency 1

Frequency, GHz	DC to 4
VSWR	1.08:1
Return Loss, dB	28
Insertion Loss, dB	0.2

Frequency 2

Frequency, GHz	4 to 12
VSWR	1.29:1
Return Loss, dB	18
Insertion Loss, dB	0.346

Frequency 3

Frequency, GHz	12 to 18
VSWR	1.43:1
Return Loss, dB	15
Insertion Loss, dB	0.424

Mechanical Specifications

Temperature

Operating Range, deg C	-65 to +155
------------------------	-------------

Size

Length, in [mm]	0.496 [12.6]
Width/Dia., in [mm]	0.135 [3.43]

Click the following link (or enter part number in "SEARCH" on website) to obtain additional part information including price, inventory and certifications: [SMP Female to SMP Female Adapter 12.6mm Long Bullet PE9776](#)

The information contained in this document is accurate to the best of our knowledge and representative of the part described herein. It may be necessary to make modifications to the part and/or the documentation of the part, in order to implement improvements. Pasternack reserves the right to make such changes as required. Unless otherwise stated, all specifications are nominal.



SMP Female to SMP Female Adapter 12.6mm Long Bullet

TECHNICAL DATA SHEET

PE9776

Connector 1

Type	SMP Female
Inner Conductor Material and Plating	Beryllium Copper, Gold
Inner Conductor Plating Specification	6µ in. minimum
Body Material and Plating	Beryllium Copper, Gold
Body Plating Specification	6µ in. minimum
Dielectric Type	PTFE

Connector 2

Type	SMP Female
Inner Conductor Material and Plating	Beryllium Copper, Gold
Inner Conductor Plating Specification	6µ in. minimum
Body Material and Plating	Beryllium Copper, Gold
Body Plating Specification	6µ in. minimum
Dielectric Type	PTFE

Compliance Certifications (visit www.Pasternack.com for current document)

RoHS Compliant	Yes
----------------	-----

Plotted and Other Data

Notes:	Values at 25 °C, sea level
--------	----------------------------

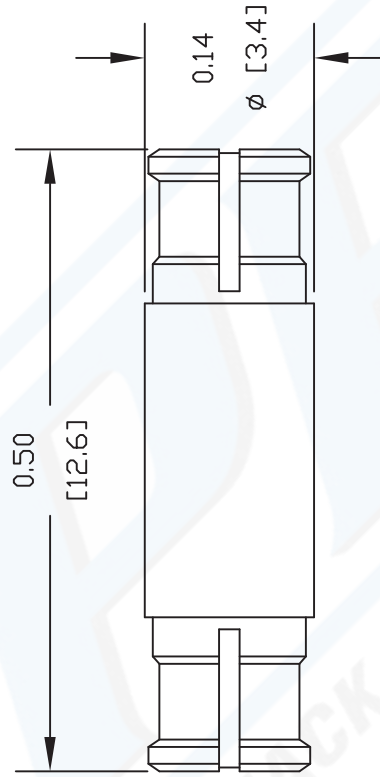
URL: <http://www.pasternack.com/smp-female-smp-female-straight-adapter-pe9776-p.aspx>

SMP Female to SMP Female Adapter 12.6mm Long Bullet from Pasternack Enterprises has same day shipment for domestic and International orders. Our RF, microwave and fiber optic products maintain a 99% availability and are part of the broadest selection in the industry.

The information contained in this document is accurate to the best of our knowledge and representative of the part described herein. It may be necessary to make modifications to the part and/or the documentation of the part, in order to implement improvements. Pasternack reserves the right to make such changes as required. Unless otherwise stated, all specifications are nominal.

PE9776 CAD Drawing

SMP Female to SMP Female Adapter 12.6mm Long Bullet



DWG TITLE

PE9776

NOTES:
1. UNLESS OTHERWISE SPECIFIED ALL DIMENSIONS ARE NOMINAL.
2. ALL SPECIFICATIONS ARE SUBJECT TO CHANGE WITHOUT NOTICE AT ANY TIME.
3. DIMENSIONS ARE IN INCHES [mm].

REV. -

FSCM NO. 53919

CAD FILE 101306

SCALE N/A

SIZE A

127

PASTERNAK ENTERPRISES, INC.

P.O. BOX 16759, IRVINE, CA 92623
PHONE (949) 261-1920 FAX (949) 261-7451

WEB ADDRESS: www.pasternack.com
E-MAIL ADDRESS: sales@pasternack.com

COAXIAL & FIBER OPTICS



PASTERNAK ENTERPRISES®
ESTABLISHED 1972

X-ON Electronics

Largest Supplier of Electrical and Electronic Components

Click to view similar products for [Circuit Breakers](#) category:

Click to view products by [Pasternack](#) manufacturer:

Other Similar products are found below :

[LUGZX66-1-61-20.0-44](#) [M39019/01-201](#) [M39019/01-221](#) [M39019/04-249S](#) [M39019/04-313S](#) [M55629/1-016](#) [M55629/1-018](#) [M55629/1-021](#)
[M55629/1-033](#) [M55629/1-046](#) [M55629/1-048](#) [M55629/1-058](#) [M55629/1-067](#) [M55629/1-070](#) [M55629/1-079](#) [M55629/1-084](#) [M55629/1-085](#)
[M55629/1-109](#) [M55629/11-102](#) [M55629/12-045](#) [M55629/12-046](#) [M55629/1-330](#) [M55629/1-366](#) [M55629/1-387](#) [M55629/1-401](#) [M55629/2-](#)
[022](#) [M55629/2-030](#) [M55629/2-072](#) [M55629/2-082](#) [M55629/2-099](#) [M55629/2-101](#) [M55629/2-102](#) [M55629/21-BM-BM](#) [M55629/21-HM-HM](#)
[M55629/21-NS-NS](#) [M55629/22-NR-NR-NR](#) [M55629/22-RS-RS-RS](#) [M55629/2-347](#) [M55629/2-401](#) [M55629/2-413](#) [M55629/3-030](#)
[M55629/3-050](#) [M55629/3-102](#) [M55629/3-103](#) [M55629/3-128](#) [M55629/3-130](#) [M55629/3-238](#) [M55629/3-386](#) [M55629/3-LBZB](#) [M55629/4-](#)
[115](#)