

## Mounting boxes

NEW! A.0080 - Standard series to 650°C, flush mounting, deep, junction, with screws



NEW! A.0081K - Junction boxes for gypsum walls, windproof, deep with screws



# Mounting boxes

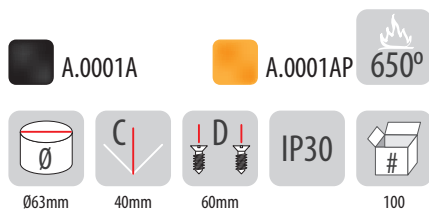
A  
5

## Standard series to 650°C, flush mounting, normal

PP

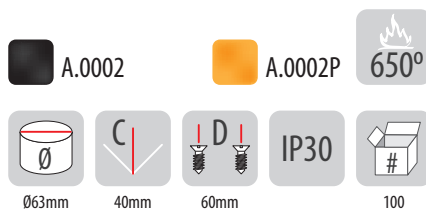
Norm: PN-EN 60670-1

PK60 lux



Remarks:

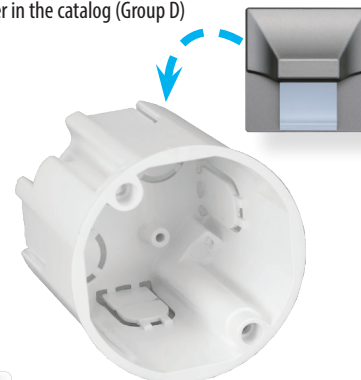
PK60 lux with screws



Remarks:

PK50 flush mounting

Boxes Ø50 (A.0055 and A.0056) are perfect for mounting STARS LINE LED series by PAWBOL. Full range of decorative STARS LINE LED lights series later in the catalog (Group D)



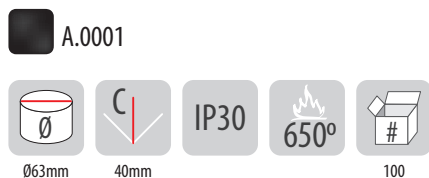
Remarks: for LED lamps  
Norm: PN-EN 60670-1

## Standard series to 650°C, flush mounting, normal

PP

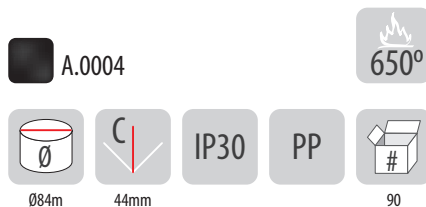
Norm: PN-EN 60670-1

PK60



Remarks:

P080



Remarks: Norm: PN-EN 60670-1





# Mounting boxes

Standard series to 650°C, flush mounting, junction

IP30

PP

Norm: PN-EN 60670-1

PK60 junction, shallow



A.0005BL      A.0005BLP

Ø62mm	42mm	60mm	650°	100

PK60 junction, shallow with screws



A.0005L      A.0005LP

Ø62mm	42mm	60mm	650°	100

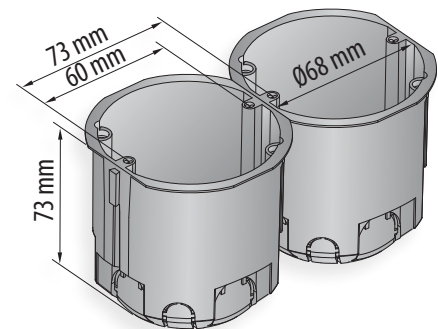
Junction, deep with screws



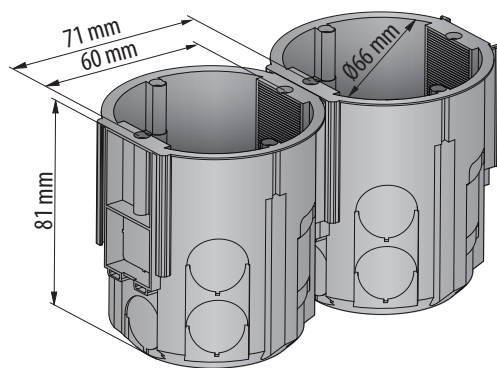
A.0006P/68

Ø73mm	73mm	60mm	650°	50

Remarks:



Junction, deep with screws



A.0080

Ø68mm	81mm	60mm	650°	50

Uwagi / remarks:



## PK60 lux mounting boxes – deep with screws. New solutions. New quality.

PAWBOL PK 60 lux mounting boxes it's a comfort of installations in all conditions

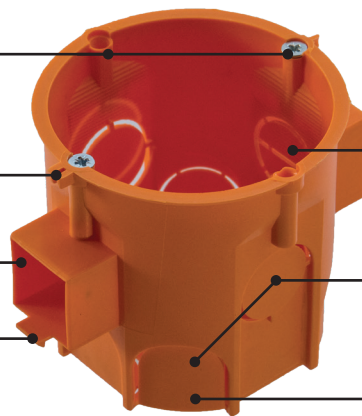
- » high stiffness enables easier box installation
- » easy to break large culverts allow introduction of a wider range of wires and casing pipes
- » plenty of space for cable routing
- » possibility to combine multiple boxes in a one row (in junction version)
- » stable connection for boxes in junction version - with an additional connection at the top of the can
- » Compatible with lids attached by using screws and ferruls
- » 4 screw slots allow for stable mounting of accessories

Slots for screws for attaching accessories

Additional mountings, stiffening a couple of boxes

The main mount allows stable connection of many boxes

Safety catch preventing the sliding down of the boxes



Passages inside connectors for easy routing of cable between the connected boxes

Easy to break culverts placed at two levels

Large grommets for easy cable entry

PP

## PK60 lux junction boxes, deep

Norm: PN-EN 60670-1

PK60 lux, deep



A.0001BL

A.0001BLP

A.0001LD

A.0001LDP



Ø63mm



62mm



60mm



IP30



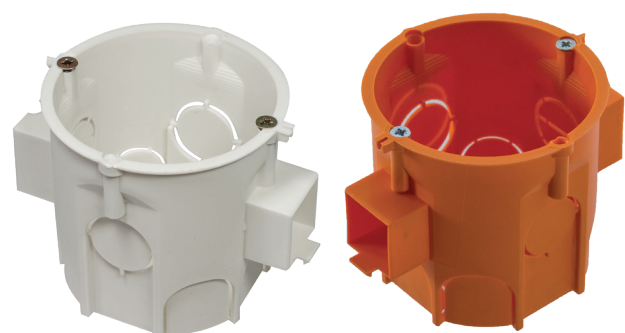
110



650°

Remarks:

PK60 lux junction, deep



with screws

without screws

A.0006BL

A.0006BLP

A.0006L

A.0006LP



Ø63mm



62mm



60mm



IP30



110



650°

Remarks:

# Mounting boxes

## Standard series to 650°C, flush mounting, n-row

PP

Norm: PN-EN 60670-1

PK60 2-row with screws



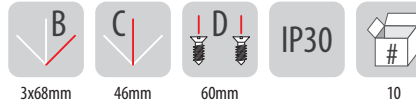
A.0042WP



PK60 3-row with screws



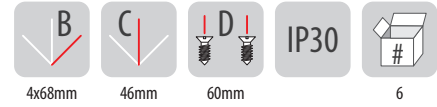
A.0043WP



PK60 4-row with screws



A.0049WP



## Standard series to 650°C, flush mounting, n-row, deep

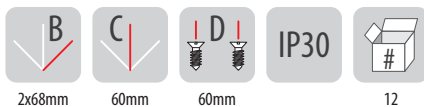
PP

Norm: PN-EN 60670-1

PK60 2-row with screws, deep



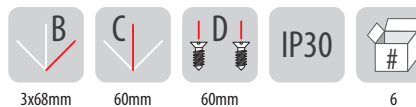
A.0042WPG



PK60 3-row with screws, deep



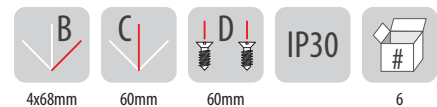
A.0043WPG



PK60 4-row with screws, deep



A.0049WPG

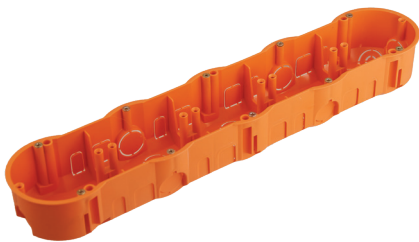




PP

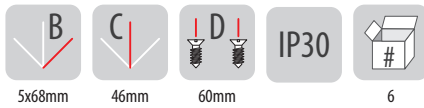
Norm: PN-EN 60670-1

PK60 5-row with screws



A.0048WP

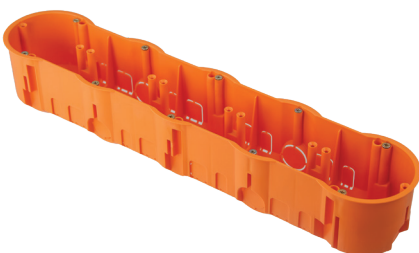
650°



PP

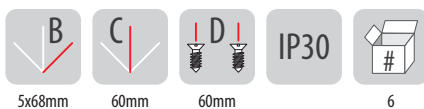
Norm: PN-EN 60670-1

PK60 5-row with screws, deep



A.0048WPG

650°

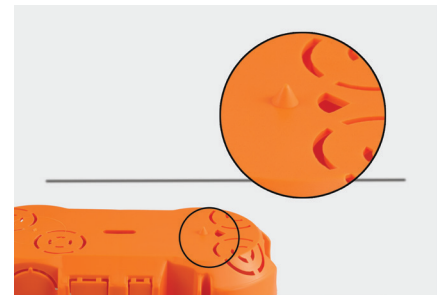


## Intuitive installation of multiple boxes

Mark a line on a drywall, in place where you want to install a box.



The lower surface of the multiple boxes contain triangular window indicating the symm line of the box. Underside of the box also have small pins - markers - used to designate the center of the drilling.



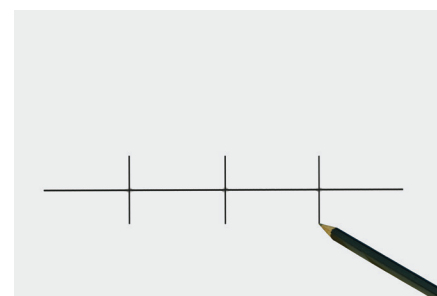
Place the box to the drawn line, so that the line is visible in the center of the triangular windows located on the underside of the box.



Lightly hit the bottom of the box with the hammer helve. This will make dents on plasterboard in places where are the marks for drilling. This will dent the plasterboard in places where there are markers of drilling.



Mark clearly the place of drilling and witch special bit drill holes into the multiple box.



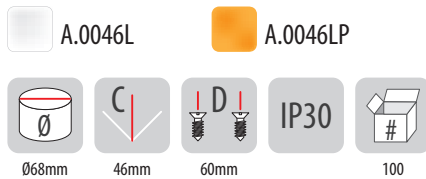
# Mounting boxes

Standard series to 650°C, for gypsum walls

PP  
PS

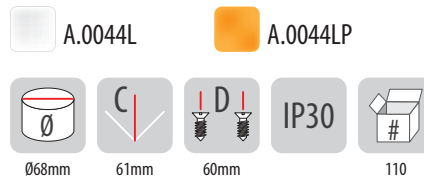
Norm: PN-E-93208:1997

PK60 for gypsum walls



Remarks: Norm: PN-EN 60670-1

PK60 for gypsum walls, deep



Remarks: Norm: PN-EN 60670-1

Standard series to 650°C, for gypsum walls

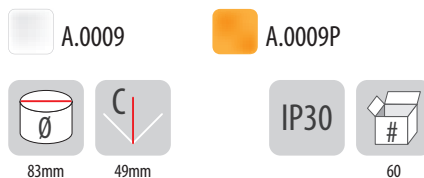
PP  
PS

P070 for gypsum walls



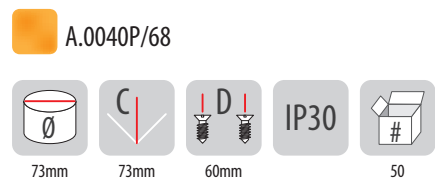
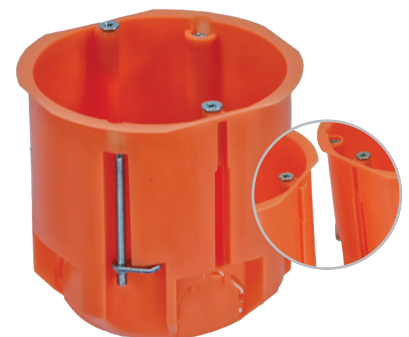
Remarks: Norm: PN-EN 60670-1

P080 for gypsum walls



Remarks: Norm: PN-EN 60670-1

PK60 junction, for gypsum walls, deep, with screws



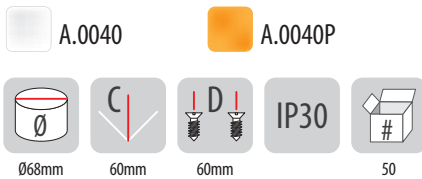
Remarks:

PP  
PS

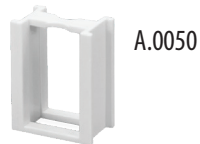
## Junction boxes for gypsum wall

Norm: PN-E-93208:1997

### PK60 junction, for gypsum walls, deep

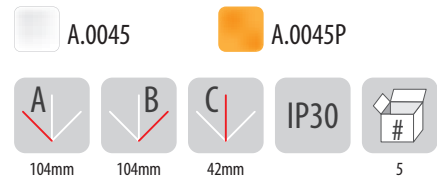


Remarks:



Example of installation: two junction boxes  
A.0040P assembled using couplers  
A.0050

### PO 100x100x40 for gypsum walls

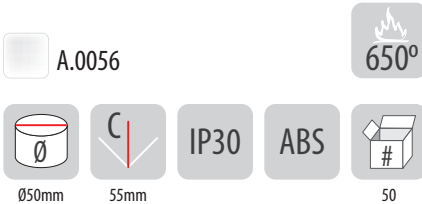


Remarks:  
Norm: PN-EN 60670-1

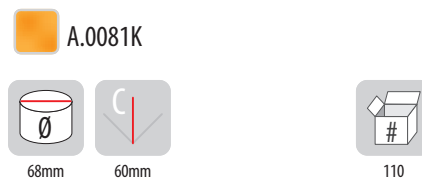
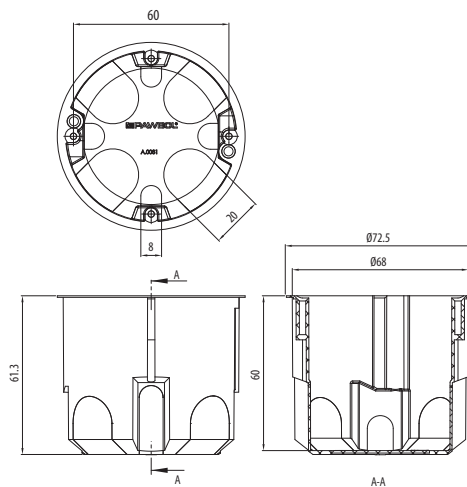
## Junction boxes for gypsum walls

## Junction boxes for gypsum walls, windproof, deep with screws

### PK50 for gypsum walls for led lamps



Remarks: for LED lamps  
Norm: PN-EN 60670-1



Norm: PN-EN 60670-1





# Mounting boxes

Standard series to 650°C, for gypsum walls, n-row

PP

Norm: PN-EN 60670-1

PK60 2-row with screws



A.0010
  A.0010P

B C D IP30 #

2x68mm    46mm    60mm    36

PK60 3-row with screws



A.0041
  A.0041P

B C D IP30 #

3x68mm    46mm    60mm    10

PK60 4-row with screws



A.0047
  A.0047P

B C D IP30 #

4x68mm    46mm    60mm    6

Standard series to 650°C, for gypsum walls, n-row, deep

PP

Norm: PN-EN 60670-1

PK60 2-row with screws

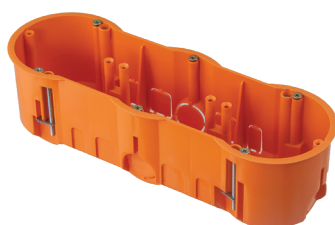


A.0010PG

B C D IP30 #

2x68mm    60mm    60mm    12

PK60 3-row with screws, deep



A.0041PG

B C D IP30 #

3x68mm    60mm    60mm    6

PK60 4-row with screws, deep



A.0047PG

B C D IP30 #

4x68mm    60mm    60mm    6

PP

Norm: PN-EN 60670-1

PK60 5-row with screws



A.0048

A.0048P



5x68mm



46mm



60mm

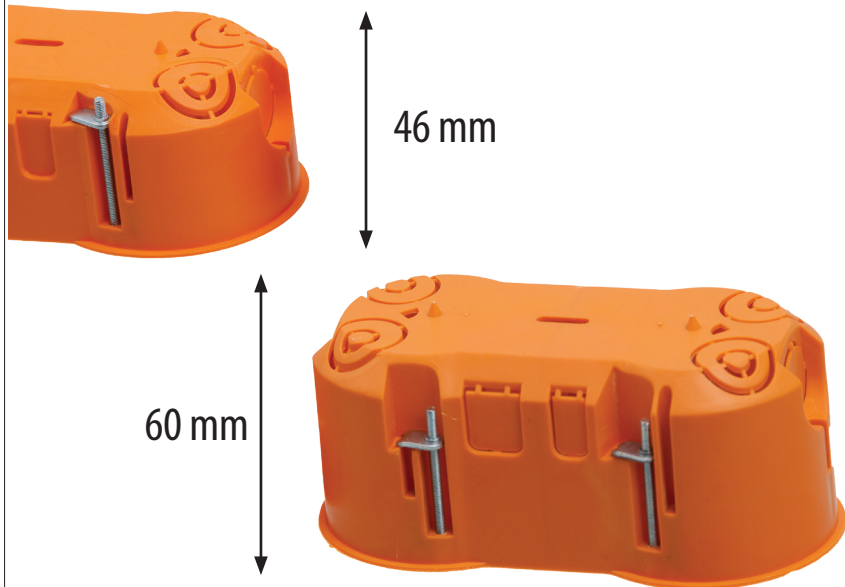


IP30

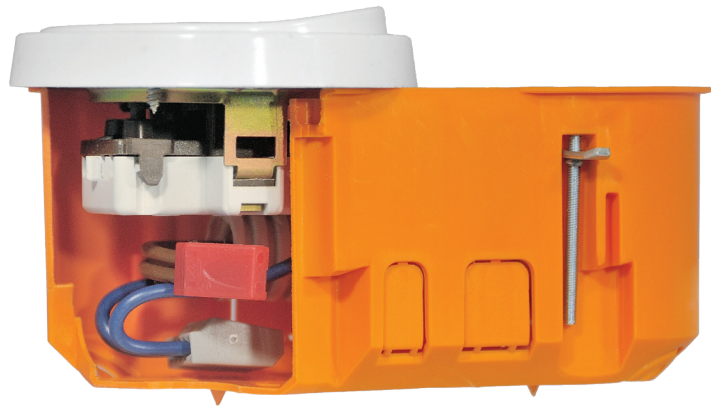


6

Mounting boxes for gypsum walls, n-row – shallow and deep



You can see the difference! More space = more convenient installation!



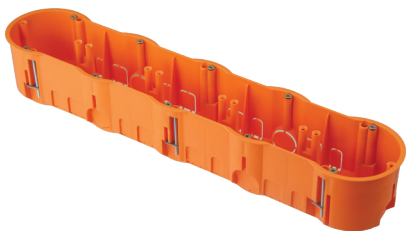
Boxes for gypsum walls have special screws with hooks that allow you to much faster twisting the fixing catch in the wall.

In addition, these boxes have a special collar around the body that facilitates boxes assembly to the gypsum wall

PP

Norm: PN-EN 60670-1

PK60 5-row with screws, deep



A.0048PG



5x68mm



60mm



60mm



IP30



6



# Mounting boxes



## RED SERIES - HALOGEN FREE BOXES

Series of halogen-free mounting boxes meets the requirements of the PN-EN 60670-1

Features of halogen-free boxes in a red series:

- » **Halogen-free** - means that the product does not contain harmful elements such as chlorine, fluorine or bromine.
- » **Flame retardancy** - means that after the cessation of fire, box automatically goes out, moreover, in case of fire, boxes do not transmit the flames.

Why is this so important?

During a fire, building materials made of polymer, give off gases as a result of the decomposition of these materials. Extremely dangerous are the halogen gas derivatives, especially hydrogen chloride, which in contact with water transforms to hydrochloric acid. These gases pose a very serious threat to the health and life of humans, and have negative impact for the structure of buildings in the fire zone and adjacent areas.

The harmful gases are moving to threatened places via air ducts, chimneys and cable channels.

This threat is particularly important in public buildings, such as office buildings, supermarkets, railway stations or schools.



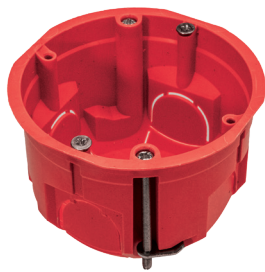
PP

PP-flame retardant

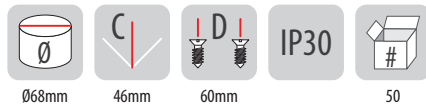
Norm: PN-EN 60670-1 Remarks: self-extinguishing

## Halogen free series to 850°C, for gypsum walls

PK60 for gypsum walls

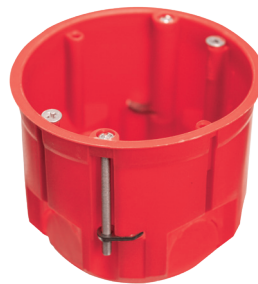


 A.0046LA

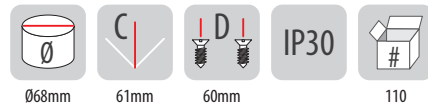


Remarks:

PK60 for gypsum walls, deep

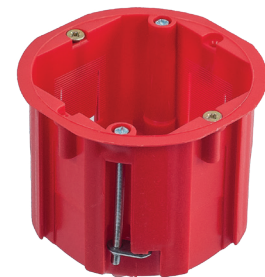


 A.0044LA

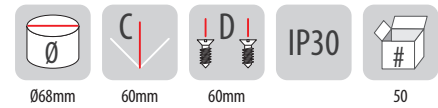


Remarks:

PK60 junction, for gypsum walls, deep



 A.0040A



Remarks:



# Mounting boxes

## Boxes for gypsum wall, n-row, halogen free


PP






PP-flame retardant

Norm: PN-EN 60670-1 Remarks: self-extinguishing

PK60 2-row for gypsum walls









**A.0010A** 

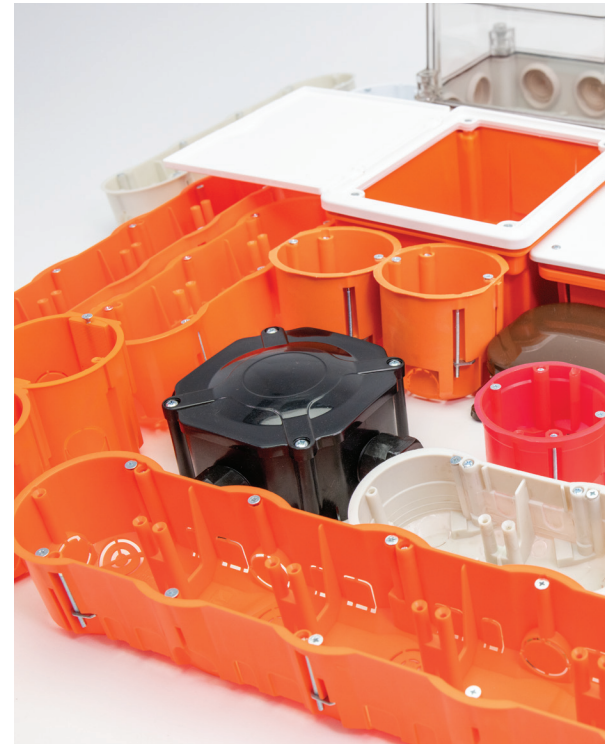
				
2x68mm	46mm	60mm	IP30	36

PK60 3-row for gypsum walls



**A.0041A** 

				
3x68mm	44mm	60mm	IP30	10



## Boxes for gypsum wall, n-row, halogen free, deep


PP






PP-flame retardant

Norm: PN-EN 60670-1 Remarks: self-extinguishing

PK60 2-row for gypsum walls, deep









**A.0010AG** 

				
2x68mm	60mm	60mm	IP30	12

PK60 3-row for gypsum walls, deep









**A.0041AG** 

				
3x68mm	60mm	60mm	IP30	6

PK60 4-row for gypsum walls, deep



**A.0047AG** 

				
4x68mm	60mm	60mm	IP30	6



# Mounting boxes

A  
17

PP

PP-flame retardant

Norm: PN-EN 60670-1 Remarks: self-extinguishing

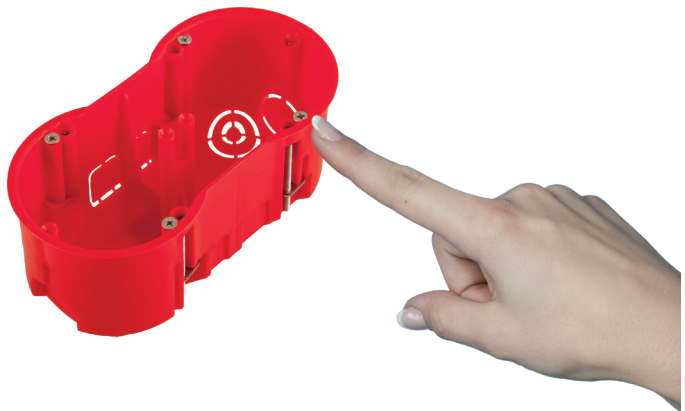
Boxes for gypsum wall, flush mounting, n-row, halogen free



PAWBOL boxes have a special weakness spots with a diameter of  $\varnothing 20$ , allowing easy installation of wires using casing pipes



The use of specific markers designating the drilling site, effectively facilitate installation of boxes



Complete product - boxes are equipped with screws for plastics, providing permanent seating of installed accessories

PP

PP-flame retardant

Norm: PN-EN 60670-1 Remarks: self-extinguishing

PK60 5-row for gypsum walls, deep



 A.0048AG

 850°

 B

5x68mm

 C

60mm

 D

60mm

 IP30



6



# Mounting boxes

## Flush mounting and junction boxes

IP30



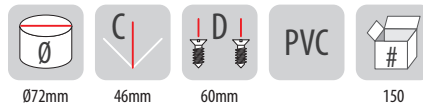
Norm: PN-EN 60670-1



Universal junction box UK1



A.UK1-S

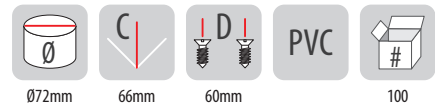


Remarks:

Universal junction box UK1, deep



A.UK1-SH



Uwagi / remarks:

## Flush mounting and junction boxes

IP30



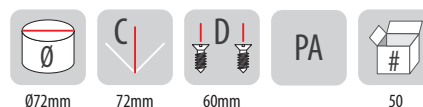
Norm: PN-EN 60670-1



Junction box KUP68 deep with screws



KUP68H-2XXS

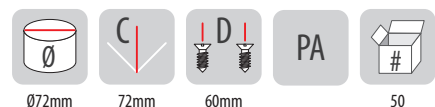


Remarks:

Junction box KUP68 deep without screws



KUP68H-2XX



Remarks:

IP30



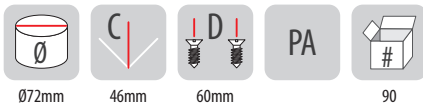
Norm: PN-EN 60670-1

## Flush mounting and junction boxes

Junction box KUP68 with screws

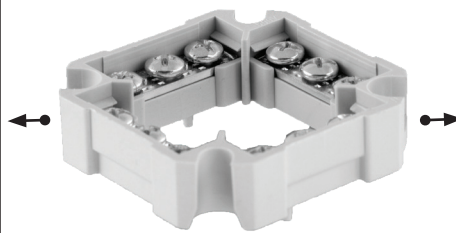


KUP68-02

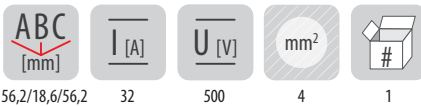


Remarks:

Terminal strips for KUP68 electro-installation mounting box, LZ 4x4 mm<sup>2</sup>

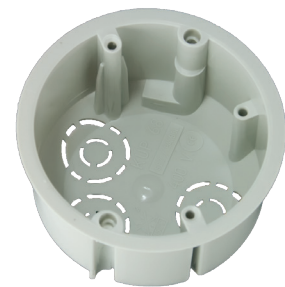


E.6801

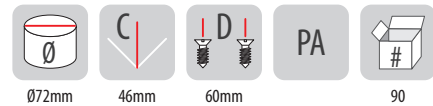


Remarks: Norm: PN-EN 60947-7-1, available colours: gray RAL7035, black, thermoplastic

Junction box KUP68 without screws



KUP68-01



Remarks:

850° PA IP30

PA - self-extinguishing

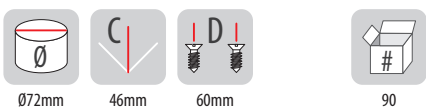
Norm: PN-EN 60670-1 Remarks: self-extinguishing

## Halogen free boxes, for gypsum walls

Box KUP68 for gypsum walls



A.KUP68-01

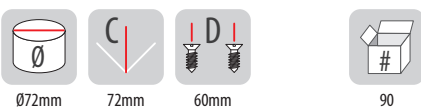


Remarks:

Box KUP68 for gypsum walls deep with screws

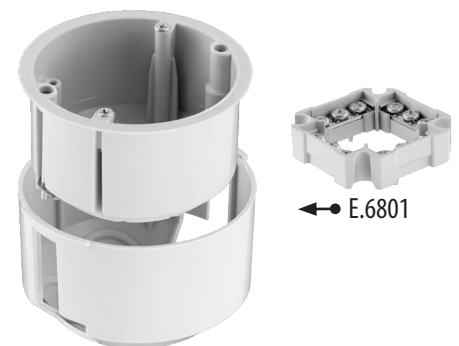


A.KUP68H-231

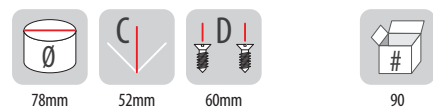


Remarks:

Box KUP68 for gypsum walls with special added outer sheat



A.KUP68-01-DV



Remarks:

## Flush mounting boxes

PS

PP

cover

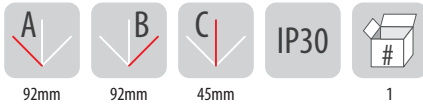
box

Norm: PN-EN 60670-1

Flush mounting boxes 92x92x45



OL 10001

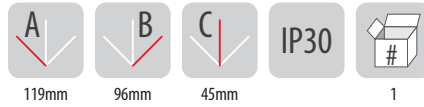


Remarks:

Flush mounting boxes 119x96x45



OL 10002

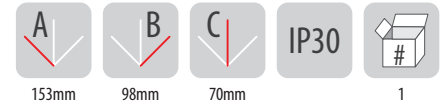


Remarks:

Flush mounting boxes 153x98x70



OL 10003

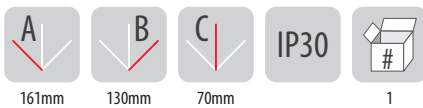


Remarks:

Flush mounting boxes 161x130x70



OL 10004

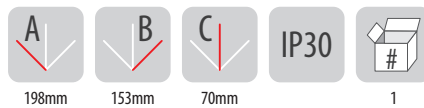


Remarks:

Flush mounting boxes 198x153x70



OL 10005

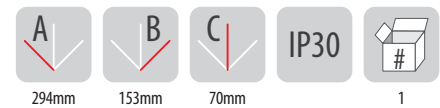


Remarks:

Flush mounting boxes 294x153x70



OL 10006

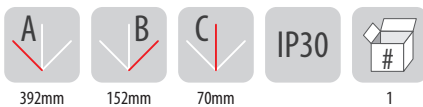


Remarks:

Flush mounting boxes 392x152x70



OL 10007

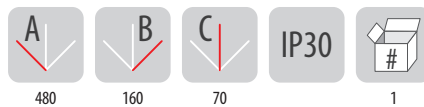


Remarks:

Flush mounting boxes 480x160x70



OL 10008



Remarks:

OL 10004 inside



## Facing wall boxes - P type

PP

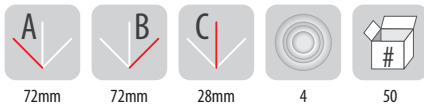
Norm: PN-EN 60670-1

P-2 with connection 4 x 2,5 mm<sup>2</sup>



A.0017

IP44



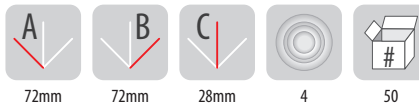
Remarks: inside dimensions  
gland hole diameter: 20mm

P-2 without terminals



A.0016

IP44



Remarks: inside dimensions  
gland hole diameter: 20mm



## Facing wall, hermetic boxes

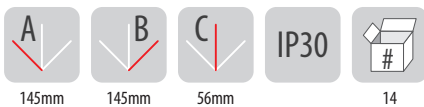
Norm: PN-EN 60670-1

POI-28



A.0011

IP30



Remarks: Colour : RAL7035, IP30, Material: PP  
gland hole diameter: 28mm, inside dimensions



# Mounting boxes

## Facing wall boxes IP54, halogen free series

PP  
ABS

850°

Norm: PN-EN 60670-1

PH 92x92 klik

5 terminals 4mm<sup>2</sup>



A.0020

without terminals



A.0018

IP54

A	B	C		
92mm	92mm	44mm	4	10

Remarks: gland hole diameter: 21mm

PH 92x92 klik

5 terminals 4mm<sup>2</sup>



A.0020B

without terminals



A.0018B

IP54

A	B	C		
92mm	92mm	44mm	4	10

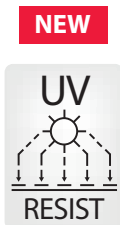
Remarks: gland hole diameter: 21mm

PH 92x92 klik

5 terminals 4mm<sup>2</sup>



A.0020C



A.0018C

IP54

A	B	C		
92mm	92mm	44mm	4	10

Remarks: gland hole diameter: 21mm

PH 92x92 klik

5 terminals 4mm<sup>2</sup>



A.0020BR

without terminals



A.0018BR

IP54

A	B	C		
92mm	92mm	44mm	4	10

Remarks: gland hole diameter: 21mm



Quick assembly



Facing wall boxes IP 54 PH 92 x 92 click are registered in the Patent Office as industrial design. The original distinctive shape is generated by a stylized box elements.

Law of Registration No. 14330



PE  
PP

Norm: PN-EN 60670-1

## Facing wall, hermetic boxes

Hermetic boxes 90x45 klik



A.0063    A.0063C    IP54



Remarks: colour : RAL7035, gland hole diameter: 20mm, PG13,5

Hermetic boxes 90x90 klik



A.0064    A.0064C    IP54



Remarks: colour : RAL7035, gland hole diameter: 20mm, PG13,5

Hermetic boxes 90x130 klik



A.0065    A.0065C    IP54



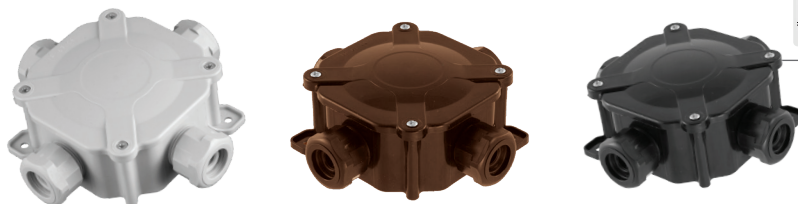
Remarks: colour : RAL7035, gland hole diameter: 20mm, PG13,5

Norm: PN-EN 60670-1

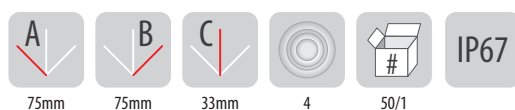
## Facing wall, hermetic boxes

Hermetic boxes: PG16 / 5x4 mm<sup>2</sup> and 27P / 5x6 mm<sup>2</sup> have increased tightness - IP67, so you can use them on the outer walls of buildings exposed to atmospheric factors (rain, cold, etc.)

Box PG16 / 5x4 mm<sup>2</sup>



A.0035    A.0035BR    A.0035C

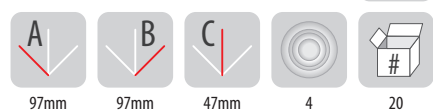


Remarks: Colour : RAL7035, IP67, Material: PA, gland : PG16, inside dimensions. color: black: RAL9017, brown: RAL8011  
Only A.0035C hermetic boxes are UV resistant

Box PG21 / 5x6 mm<sup>2</sup>



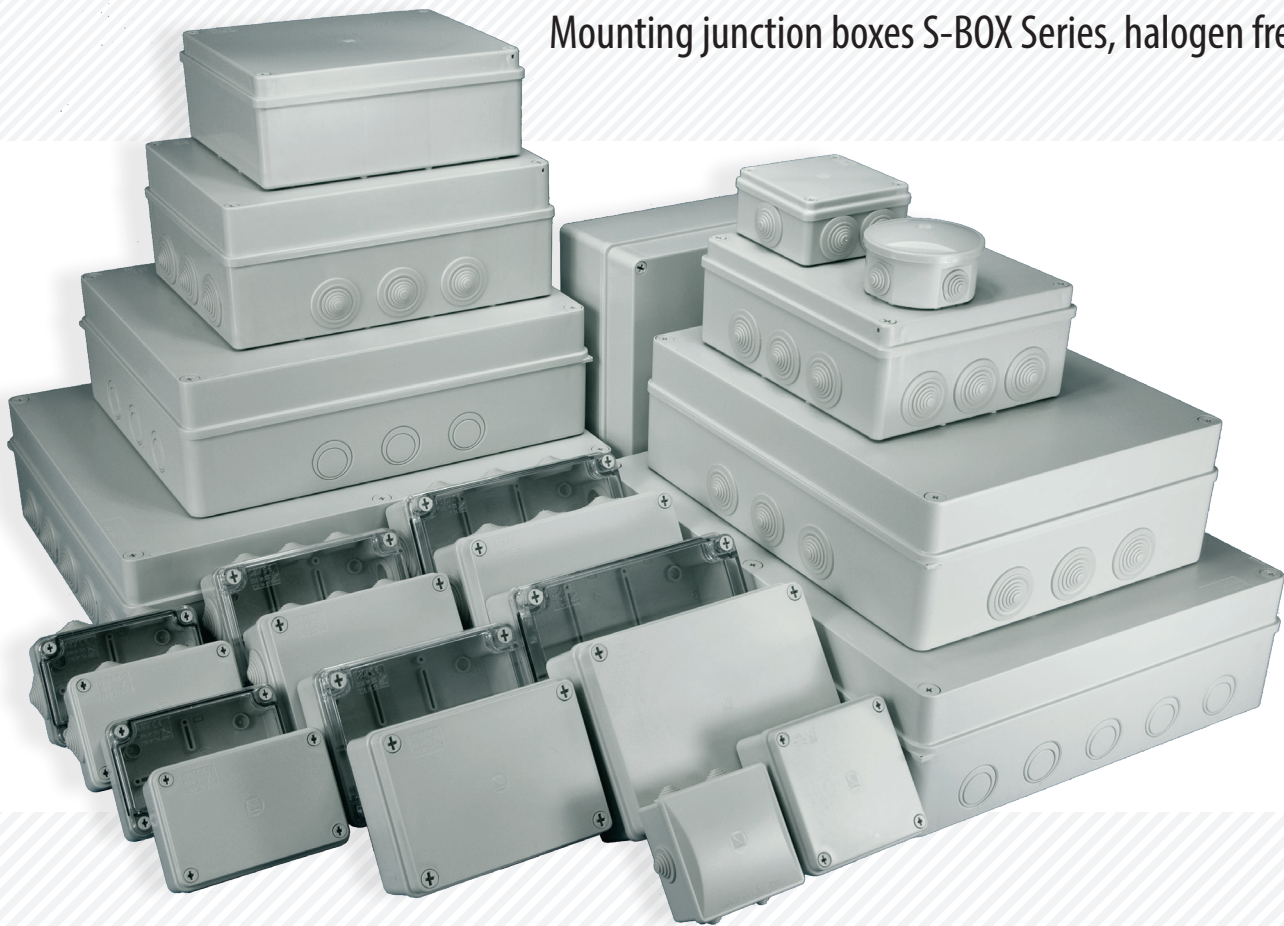
A.0036    A.0036C    IP67



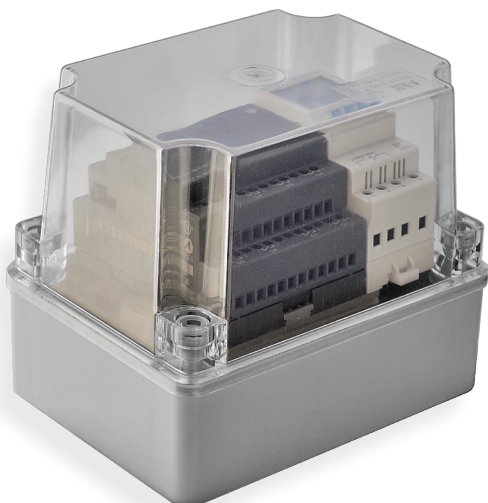
Remarks: Colour : RAL7035, IP67, Material: PA, gland : PG21, inside dimensions. Only A.0035C hermetic boxes are UV resistant

# Mounting boxes

## Mounting junction boxes S-BOX Series, halogen free



- » Easy assembly of electrical and electronic devices thanks to numerous mini pillars inside the box
- » Total resistance against corrosion of boxes, provide used plastic screws, it allows you to mount boxes in areas exposed to moisture
- » High degree of protection IP65 due to sealing up the connection between the cover and the base - with the exception of S-BOX 026 and 036 series. Mentioned series have comfortable and quick locking system by clicking up the cover on the box and degree of protection IP44
- » High mechanical and chemical resistance



## Wide range of choice - many possibilities of application

- » Transparent cover generates an increased number of possible applications, allowing for periodic inspections of the box without having to remove the cover
- » Transparent cover - high lampshade impact resistant (IK 10)

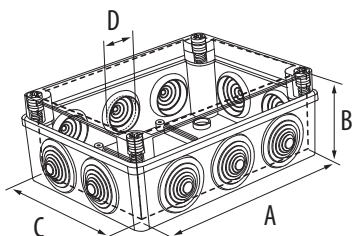




IK08

## Mounting junction boxes S-BOX Series, halogen free

Norm: PN-EN 60670-1, PN-EN 62208



Dimensions A, B, C - are inside dimensions of S-BOX

S-BOX 026 and 036 boxes have a convenient and quick locking system by clicking cover on the box, this provides IP44 protection class.



### S-BOX 80x80x40 klik

Catalogue number	Type	Cover	Colour	Dimensions			Glands	Type of gland	Gland hole diameter	IP	Kind of material	Accessory	Quantity in package
				A [mm]	C [mm]	B [mm]							
S-BOX 026	Ø80x40 klik	opaque	RAL7035	Ø84		40	4	square	22mm, PG 16	IP44	PS/ABS		5
S-BOX 026B	Ø80x40 klik	opaque	white	Ø84		40	4	square	22mm, PG 16	IP44	PS		5
S-BOX 036	80x80x40 klik	opaque	RAL7035	80	80	40	6	square	20mm, PG 13,5	IP44	PS/ABS		10/60
S-BOX 036B	80x80x40 klik	opaque	white	80	80	40	6	square	20mm, PG 13,5	IP44	PS		10/60

### S-BOX 100x100x50



Catalogue number	Type	Cover	Colour	Dimensions			Glands	Type of gland	Gland hole diameter	IP	Kind of material	Accessory	Quantity in package
				A [mm]	C [mm]	B [mm]							
S-BOX 106	100x100x50 / 6 glands	opaque	RAL7035	100	100	50	6	round	28mm, PG 21	IP65	PS/ABS		6/90
S-BOX 106B	100x100x50 / 6 glands	opaque	white	100	100	50	6	round	28mm, PG 21	IP65	PS/ABS		6/90
S-BOX 116	100x100x50 / without glands	opaque	RAL7035	100	100	50				IP65	PS/ABS		6/90
S-BOX 116B	100x100x50 / without glands	opaque	white	100	100	50				IP65	PS/ABS		6/90

### S-BOX 120x80x50



Catalogue number	Type	Cover	Colour	Dimensions			Glands	Type of gland	Gland hole diameter	IP	Kind of material	Accessory	Quantity in package
				A [mm]	C [mm]	B [mm]							
S-BOX 206	120x80x50 / 6 glands	opaque	RAL7035	120	80	50	6	round	28mm, PG 21	IP65	PS/ABS		6/120
S-BOX 206B	120x80x50 / 6 glands	opaque	white	120	80	50	6	round	28mm, PG 21	IP65	PS/ABS		6/120
S-BOX 206-P	120x80x50 / 6 glands	transparent	RAL7035	120	80	50	6	round	28mm, PG 21	IP65	PS/ABS/PC		1
S-BOX 216	120x80x50 / without glands	opaque	RAL7035	120	80	50				IP65	PS/ABS		6/120
S-BOX 216B	120x80x50 / without glands	opaque	white	120	80	50				IP65	PS/ABS		6/120
S-BOX 216-P	120x80x50 / without glands	transparent	RAL7035	120	80	50				IP65	PS/ABS/PC		1

S-BOX installation boxes series:  
[S-BOX 190x140x70](#), [S-BOX 240x190x90](#),  
[S-BOX 300x220x120](#)

are also available in improved version with mounting rail or with mounting plate made by galvanized and perforated metal sheet with thickness 1mm, has openings with Ø 3mm diameter.



# Mounting boxes

## Mounting junction boxes S-BOX Series, halogen free

IK08

650°

Norm: PN-EN 60670-1, PN-EN 62208

### S-BOX 150x110x70



Catalogue number	Type	Cover	Colour	Dimensions			Glands	Type of gland	Gland hole diameter	IP	Kind of material	Accessory	Quantity in package
				A [mm]	C [mm]	B [mm]							
S-BOX 306	150x110x70 / 10 glands	opaque	RAL7035	150	110	70	10	round	28mm, PG 21	IP65	PS/ABS		1/50
S-BOX 306B	150x110x70 / 10 glands	opaque	white	150	110	70	10	round	28mm, PG 21	IP65	PS/ABS		1/50
S-BOX 306H	150x110x140 / 10 glands	opaque	RAL7035	150	110	140	10	round	28mm, PG 21	IP65	PS/ABS		1
S-BOX 306-P	150x110x70 / 10 glands	transparent	RAL7035	150	110	70	10	round	28mm, PG 21	IP65	PS/ABS/PC		1
S-BOX 316	150x110x70 / without glands	opaque	RAL7035	150	110	70				IP65	PS/ABS		1/50
S-BOX 316B	150x110x70 / without glands	opaque	white	150	110	70				IP65	PS/ABS		1/50
S-BOX 316H	150x110x140 / without glands	opaque	RAL7035	150	110	140				IP65	PS/ABS		1
S-BOX 316-P	150x110x70 / without glands	transparent	RAL7035	150	110	70				IP65	PS/ABS/PC		1

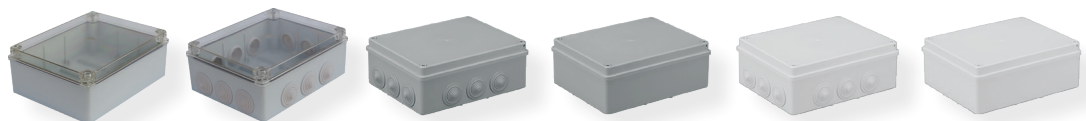
### S-BOX 190x140x70



Catalogue number	Type	Cover	Colour	Dimensions			Glands	Type of gland	Gland hole diameter	IP	Kind of material	Accessory	Quantity in package
				A [mm]	C [mm]	B [mm]							
S-BOX 406	190x140x70 / 10 glands	opaque	RAL7035	190	140	70	10	round	37mm, PG29	IP65	PS/ABS		1/30
S-BOX 406B	190x140x70 / 10 glands	opaque	white	190	140	70	10	round	37mm, PG29	IP65	PS/ABS		1/30
S-BOX 406H	190x140x140 / 10 glands	opaque	RAL7035	190	110	140	10	round	28mm, PG 21	IP65	PS/ABS		1
S-BOX 406-P	190x140x70 / 10 glands	transparent	RAL7035	190	140	70	10	round	37mm, PG29	IP65	PS/ABS/PC		1
S-BOX 416	190x140x70 / without glands	opaque	RAL7035	190	140	70				IP65	PS/ABS		1/40
S-BOX 416B	190x140x70 / without glands	opaque	white	190	140	70				IP65	PS/ABS		1/40
S-BOX 416H	190x140x140 / without glands	opaque	RAL7035	190	140	140				IP65	PS/ABS		1
S-BOX 416-P	190x140x70 / without glands	transparent	RAL7035	190	140	70				IP65	PS/ABS/PC		1

Sealing possibilities

### S-BOX 240x190x90



Catalogue number	Type	Cover	Colour	Dimensions			Glands	Type of gland	Gland hole diameter	IP	Kind of material	Accessory	Quantity in package
				A [mm]	C [mm]	B [mm]							
S-BOX 506	240x190x90 / 12 glands	opaque	RAL7035	240	190	90	12	round	37mm, PG29	IP65	PS/ABS		1/20
S-BOX 516	240x190x90 / without glands	opaque	RAL7035	240	190	90				IP65	PS/ABS		1/20
S-BOX 516B	240x190x90 / without glands	opaque	white	240	190	90				IP65	PS/ABS		16
S-BOX 516-P	240x190x90 / without glands	transparent	RAL7035	240	190	90				IP65	PS/ABS/PC		1
S-BOX 516-TH	240x190x90 / without glands	opaque	RAL7035	240	190	90				IP65	PS/ABS	rail TH35 - perforated	1

Sealing possibilities



IK08

## Mounting junction boxes S-BOX Series, halogen free

Norm: PN-EN 60670-1, PN-EN 62208



### S-BOX 300x220x120

Catalogue number	Type	Cover	Colour	Dimensions			Glands	Type of gland	Gland hole diameter	IP	Kind of material	Accessory	Quantity in package
				A [mm]	C [mm]	B [mm]							
S-BOX 606	300x220x120 / 12 glands	opaque	RAL7035	300	220	120	12	round	37mm, PG29	IP65	PS/ABS		1/10
S-BOX 616	300x220x120 / without glands	opaque	RAL7035	300	220	120				IP65	PS/ABS		1/10

Sealing possibilities



### S-BOX 380x300x120

Catalogue number	Type	Cover	Colour	Dimensions			Glands	Type of gland	Gland hole diameter	IP	Kind of material	Accessory	Quantity in package
				A [mm]	C [mm]	B [mm]							
S-BOX 706	380x300x120 / 12 glands	opaque	RAL7035	380	300	120	12	round	37mm, PG29	IP65	PS/ABS		1/5
S-BOX 716	380x300x120 / without glands	opaque	RAL7035	380	300	120				IP65	PS/ABS		1/5

Sealing possibilities



### S-BOX 460x380x120

Catalogue number	Type	Cover	Colour	Dimensions			Glands	Type of gland	Gland hole diameter	IP	Kind of material	Accessory	Quantity in package
				A [mm]	C [mm]	B [mm]							
S-BOX 806	460x380x120 / 18 glands	opaque	RAL7035	460	380	120	18	round	37mm, PG29	IP65	PS/ABS		1/5
S-BOX 816	460x380x120 / without glands	opaque	RAL7035	460	380	120				IP65	PS/ABS		1/5

Sealing possibilities



Catalogue number	Type	Cover	Colour	Dimensions			Glands	Type of gland	Gland hole diameter	IP	Kind of material	Accessory	Quantity in package
				A [mm]	C [mm]	B [mm]							
OL20043	250x200x160	opaque	RAL7035	250	200	160				IP56	ABS		1
012.CA.G	310x230x160	opaque	RAL7035	310	230	160				IP56	ABS		1




























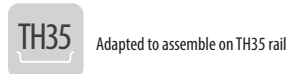
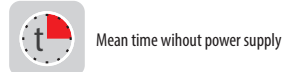
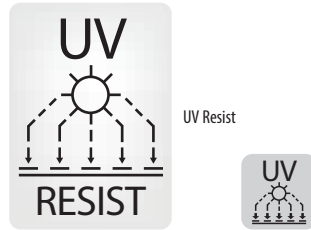
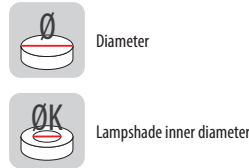
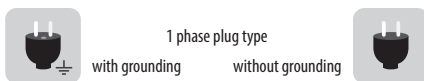
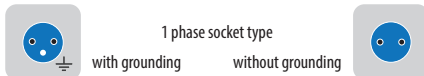
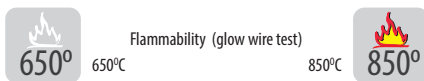
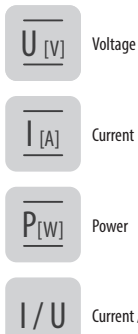
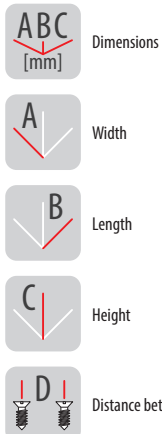
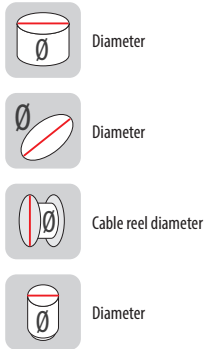
# Mounting boxes

## Accessories for mounting boxes

Accessories for mounting boxes - to adapt the boxes to individual customer needs

- cover for closing down the boxes when are used as a branching boxes
- cover used for boxes mounting in flush installations
- dissonance rings allows an increase the depth of the box (possibility to connect with each other dissonance rings)
- connectors for increasing the distance between the boxes in row

	Catalogue no.	Description			
	A.0050	Short adapter to A.0040  Remarks: Distance between centers of junctions: 71 mm		PP	 50
	A.0037	Cover for boxes PO70	 79mm	PP	 100
	A.0038	Cover for boxes PO80	 90mm	PP	 100
	A.0039	General purpose cover	 90mm	PS	 100
	A.0054	Cover for boxes PK60/PK60 lux	 81mm	PP	 100
	A.0062	Distance ring for PK60 - low	 60mm	 C 12mm	PP  50
	A.0061	Distance ring for PK60 - high	 60mm	 C 24mm	PP  50
	A.0053	Installation cover Ø60	 60mm	PP	 50



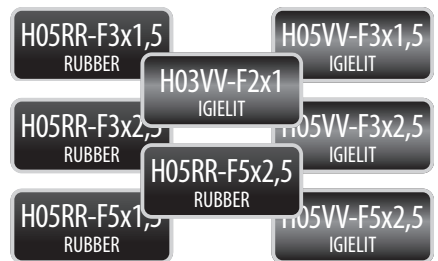
## Voltage pictograms



## Pictograms IP - ingress protection



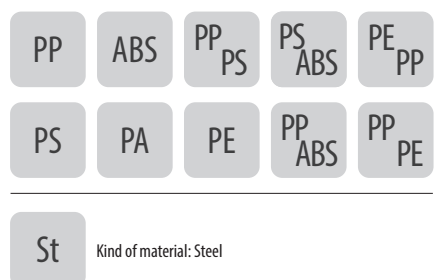
## Pictograms - wire type



## Pictograms - main colours of product



## Pictograms - type of material



## X-ON Electronics

Largest Supplier of Electrical and Electronic Components

*Click to view similar products for [Electrical Enclosures](#) category:*

*Click to view products by [Pawbol](#) manufacturer:*

Other Similar products are found below :

[1201110001](#) [120-401](#) [120-905](#) [120-909](#) [120-403](#) [130-004](#) [MR-25L+](#) [30-8739](#) [PIP-11774SCREW](#) [30-9715](#) [30-9777-BU](#) [110-902](#) [110-901](#)  
[A16N12BLP](#) [110-406](#) [110-401](#) [110-404](#) [120-405](#) [34861601](#) [106-009](#) [106-505](#) [105-405](#) [111-005](#) [127-909](#) [106-502](#) [130-475](#) [130-503](#) [127-](#)  
[455](#) [9511150](#) [9511017](#) [9820011](#) [NSYTDB5PL](#) [137-455](#) [130-001](#) [105-904](#) [120-404](#) [137-005](#) [130-505](#) [127-406](#) [AB 1,5.0](#) [AB2.0](#) [ABM.0](#)  
[73345601](#) [F-MP](#) [H-MP](#) [M-MP](#) [PAT 12040](#) [2461000](#) [9121230](#) [79541301](#)