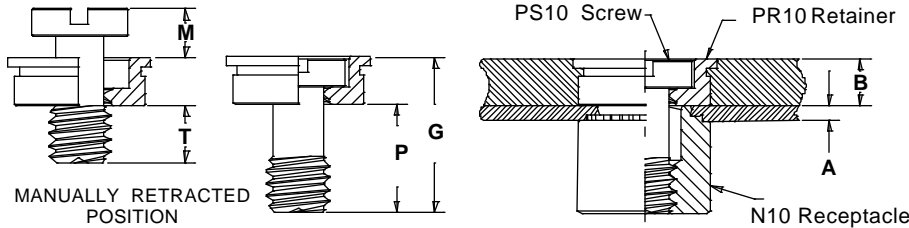


TYPE PF10 FLUSH-MOUNTED PANEL SCREW COMPONENTS

- Screw head is flush in sheets as thin as .125" (3.2mm).
- Screw remains captive in retainer when disengaged.
- For use in sheets of HRB 70 or less.



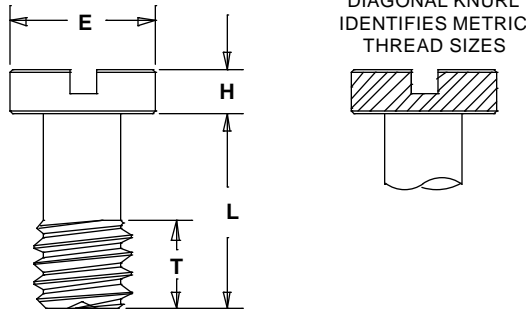
All dimensions are in inches.

UNIFIED	A	B	G	M	P	T
	Max.	Nom.	±.010			Nom.
	.04	.125	.40	.16	.28	.13

All dimensions are in millimeters.

METRIC	A	B	G	M	P	T
	Max.	Nom.	±0.25			Nom.
	1	3.18	10.3	3.8	7.2	3.3

PS10 FLUSH-MOUNTED SCREWS



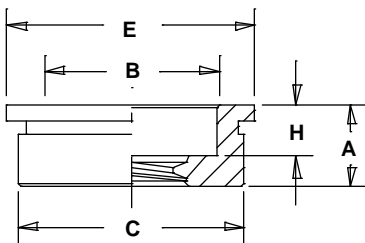
All dimensions are in inches.

UNIFIED	Thread Size	Type	Thread Code	Screw Length Code	E Nom.	H +.002 - .006	L ±.010	T Nom.
	.112-40 (#4-40)	PS10	440	40	.18	.075	.33	.13
	.138-32 (#6-32)	PS10	632	40	.21	.075	.33	.13
	.164-32 (#8-32)	PS10	832	40	.25	.075	.33	.13
	.190-32 (#10-32)	PS10	032	40	.28	.075	.33	.13

All dimensions are in millimeters.

METRIC	Thread Size x Pitch	Type	Thread Code	Screw Length Code	E Nom.	H +0.05 - 0.15	L ±0.25	T Nom.
	M3 x 0.5	PS10	M 3	40	4.7	1.9	8.3	3.3
	M4 x 0.7	PS10	M 4	40	6.3	1.9	8.3	3.3
	M5 x 0.8	PS10	M 5	40	7.1	1.9	8.3	3.3

PR10 FLUSH-MOUNTED RETAINERS



All dimensions are in inches.

UNIFIED	Thread Size	Type	Thread Code	A Max.	Min. Sheet for Self-clinching	Min. Sheet for Flush Install.	Hole Size In Sheet +.003 - .000	B Nom.	C Max.	E Nom.	H Nom.	Min. Dist. Hole C/L To Edge
	.112-40 (#4-40)	PR10	440	.124	.050	.125	.281	.195	.280	.31	.075	.31
	.138-32 (#6-32)	PR10	632	.124	.050	.125	.312	.225	.311	.34	.075	.33
	.164-32 (#8-32)	PR10	832	.124	.050	.125	.344	.255	.343	.37	.075	.34
	.190-32 (#10-32)	PR10	032	.124	.050	.125	.375	.290	.374	.41	.075	.36

All dimensions are in millimeters.

METRIC	Thread Size x Pitch	Type	Thread Code	A Max.	Min. Sheet for Self-clinching	Min. Sheet for Flush Install.	Hole Size In Sheet +0.08	B Nom.	C Max.	E Nom.	H Nom.	Min. Dist. Hole C/L To Edge
	M3 x 0.5	PR10	M 3	3.15	1.4	3.2	7.1	5	7.08	7.9	2	7.9
	M4 x 0.7	PR10	M 4	3.15	1.4	3.2	8.75	6.5	8.71	9.5	2	8.7
	M5 x 0.8	PR10	M 5	3.15	1.4	3.2	9.5	7.4	9.47	10.3	2	9.2



PENN ENGINEERING & MANUFACTURING CORP.

DANBORO, PA 18916-1000 USA / PHONE: 215-766-8853 / FAX: 215-766-3633 / SALES: 800-DIAL-PEM (USA Only)
 IN EUROPE: PEM INTERNATIONAL LTD., DONCASTER DN3 1QR ENGLAND / TEL: 01302 886961 / FAX: 01302 885341

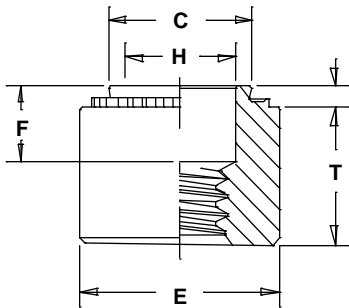
© 1996 Penn Engineering & Manufacturing Corp.

6/94



TYPE PF10 FLUSH-MOUNTED PANEL SCREW COMPONENTS (Continued)

N10 SELF-CLINCHING RECEPTACLE NUTS



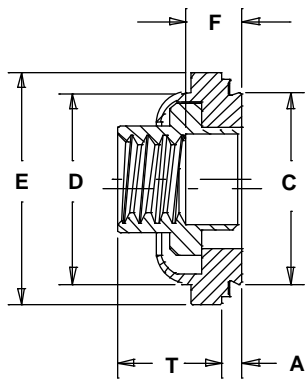
All dimensions are in inches.

UNIFIED	Thread Size	Type	Thread Code	Shank Code	A Max.	Min. Sheet Thickness	Hole Size In Sheet +.003 -.000	C Max.	E Nom.	F ±.010	H Nom.	T ±.005	Min. Dist. Hole C/L To Edge
	.112-40 (#4-40)	N10	440	1	.038	.040	.187	.186	.28	.130	.12	.24	.22
.138-32 (#6-32)	N10	632	1	.038	.040	.213	.212	.31	.130	.15	.24	.27	
.164-32 (#8-32)	N10	832	1	.038	.040	.250	.249	.34	.130	.18	.24	.28	
.190-32 (#10-32)	N10	032	1	.038	.040	.277	.276	.37	.130	.21	.24	.31	

All dimensions are in millimeters.

METRIC	Thread Size x Pitch	Type	Thread Code	Shank Code	A Max.	Min. Sheet Thickness	Hole Size In Sheet +0.08	C Max.	E Nom.	F ±0.25	H Nom.	T ±0.13	Min. Dist. Hole C/L To Edge
	M3 x 0.5	N10	M3	1	0.97	1	4.75	4.73	7.1	3.3	3.2	6	5.6
M4 x 0.7	N10	M4	1	0.97	1	6.4	6.38	8.7	3.3	4.7	6	7.1	
M5 x 0.8	N10	M5	1	0.97	1	7	6.96	9.5	3.3	5.4	6	7.9	

F10 SELF-CLINCHING FLOATING RECEPTACLE NUTS (Special order only)



All dimensions are in inches.

UNIFIED	Thread Size	Type	Thread Code	Shank Code	A Max.	Min. Sheet Thickness	Hole Size In Sheet +.003 -.000	C Max.	D Max.	E Max.	F ±.010	T ±.010	Min. Dist. Hole C/L To Edge
	.112-40 (#4-40)	F10 ^{NS}	440	1	.038	.040	.290	.289	.290	.36	.102	.200	.30
.138-32 (#6-32)	F10 ^{NS}	632	1	.038	.040	.328	.327	.330	.39	.102	.193	.32	
.164-32 (#8-32)	F10 ^{NS}	832	1	.038	.040	.368	.367	.365	.44	.102	.191	.34	
.190-32 (#10-32)	F10 ^{NS}	032	1	.038	.040	.406	.405	.405	.47	.102	.250	.36	

All dimensions are in millimeters.

METRIC	Thread Size x Pitch	Type	Thread Code	Shank Code	A Max.	Min. Sheet Thickness	Hole Size In Sheet +0.08	C Max.	D Max.	E Max.	F ±0.25	T ±0.25	Min. Dist. Hole C/L To Edge
	M3 x 0.5	F10 ^{NS}	M3	1	0.97	1	7.4	7.34	7.4	9.1	2.6	5.1	7.6
M4 x 0.7	F10 ^{NS}	M4	1	0.97	1	9.4	9.3	9.3	11.2	2.6	4.9	8.7	
M5 x 0.8	F10 ^{NS}	M5	1	0.97	1	10.3	10.27	10.27	11.2	2.6	4.9	9	

NS - Not stocked, available on special order.

Specifications subject to change without notice.



PENN ENGINEERING & MANUFACTURING CORP.

DANBORO, PA 18916-1000 USA / PHONE: 215-766-8853 / FAX: 215-766-3633 / SALES: 800-DIAL-PEM (USA Only)
IN EUROPE: PEM INTERNATIONAL LTD., DONCASTER DN3 1QR ENGLAND / TEL: 01302 886961 / FAX: 01302 885341

© 1996 Penn Engineering & Manufacturing Corp.

6/94



X-ON Electronics

Largest Supplier of Electrical and Electronic Components

Click to view similar products for [Mounting Fixings](#) category:

Click to view products by [PEM manufacturer](#):

Other Similar products are found below :

[5912235-2](#) [007541](#) [627](#) [M3783-7001](#) [71-074914-006](#) [75-69211-3P](#) [75-69214-6P](#) [75-69220-27S](#) [75-69224-5S](#) [7717-8DAP](#) [85043GULPR](#)
[85047GULPT](#) [85048GBESR](#) [FPK-02-R10](#) [PMS27488-001-01](#) [1-18023-0](#) [H-118-2](#) [DB1](#) [1302030464](#) [DC37-22-21PX](#) [1302010957](#)
[1302263564](#) [1302340393](#) [1404-0016-78](#) [14540](#) [1561-60](#) [1566](#) [1566](#) [BR16A](#) [HS5659MB98PN](#) [NT20SATT01](#) [201C5058-01-201 REV E](#)
[22594-8](#) [KBB-141](#) [89078GBEPR](#) [89078GBESR](#) [915060](#) [SF4011-60101](#) [97-CS-50](#) [1671](#) [1855-54](#) [T-2085-SP](#) [20800240002](#) [21899-4](#) [2193](#)
[2518](#) [25745-1](#) [H-118-1](#) [354467](#) [37184](#)