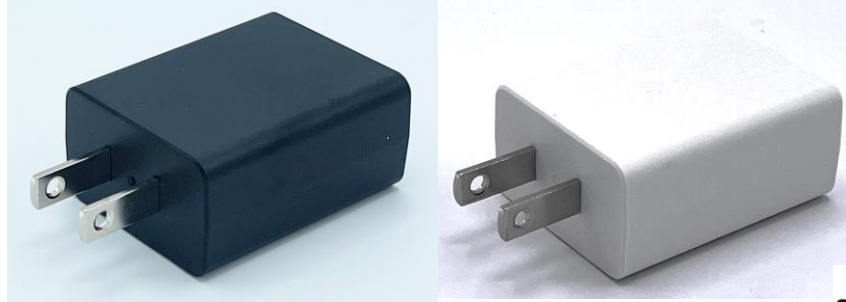




5W USB Medical Grade Adapter - US



Features

- Meets DoE Level VI
- MOOPx2 Classification
- Data Pins 2 and 3 Shorted
- LPS Compliant
- OVP, OCP, SCP
- IP22 Rating

Applications

- Blood Glucose Meters
- Blood Pressure Monitors
- Wearable Monitoring Devices

Safety Approvals

- AAMI/ANSI ES 60601-1
- IEC 60601-1
- IEC60601-1-11

Mechanical Characteristics

- Length: 47mm (1.85in)
- Width: 38mm (1.50in)
- Height: 22.3mm (0.88in)

Output Specifications

Model	DC Output Voltage	Load		Ripple ¹ P-P (max.)	Regulation Line & Load	Case Color	Prong Type
		Min.	Max.				
MQ05A-050B-H ²	5V	0A	1A	200mV	±5%	Black	US
MQ05A-050BW-H	5V	0A	1A	200mV	±5%	White	US

Notes:

1. Measuring is done by 20MHz bandwidth oscilloscope and terminated each output with a 10uF aluminum electrolytic capacitor and a 0.1uF ceramic capacitor
2. Special order MOQ

Input:**AC Input Voltage Rating**

100 to 240Vac

AC Input Voltage Range

90 to 264Vac

AC Input Current

0.2A(RMS) max @115Vac/60Hz

0.15A(RMS) max @230Vac/50Hz

Leakage Current

100uA max at 264Vac/50Hz

Input Power Saving

≤75mW @115VAC/230VAC

Output:**Efficiency**

Meets DOE Level VI

Environmental:**Temperature**

Operation -10°C to +45°C

Non-operation -40°C to +70°C

Operating Humidity 5% to 95% RH

Emissions

Complies with FCC Class B Part 18

Complies with CAN ICES-001(B)/NMB-001(B)

Complies with CISPR 11

Immunity

ESD EN61000-4-2

Contact: ±8KV; Air ±15KV

RS EN61000-4-3 3V/m

EFT EN61000-4-4 1KV

Surge EN61000-4-5

Line to Line: 1KV

DIP EN61000-4-11 Level 3

Dielectric Withstand (Hi-pot) Test

Pri. to Sec. 3000VAC, 10mA for 1 Minute

Insulation Resistance

Pri. to Sec.: 10M ohm, 500VDC, 1 Minute

FEATURES:**Over-Voltage Protection**

< 7.5V peak, at 0.05-1A Load. Auto restart

Short-Circuit Protection

Auto recovery and no component damage

Over-Current Protection

1.5A max @AC 90V~264V. Auto restart

DC Output Connector

USB A:

Pin 1 = V_o +

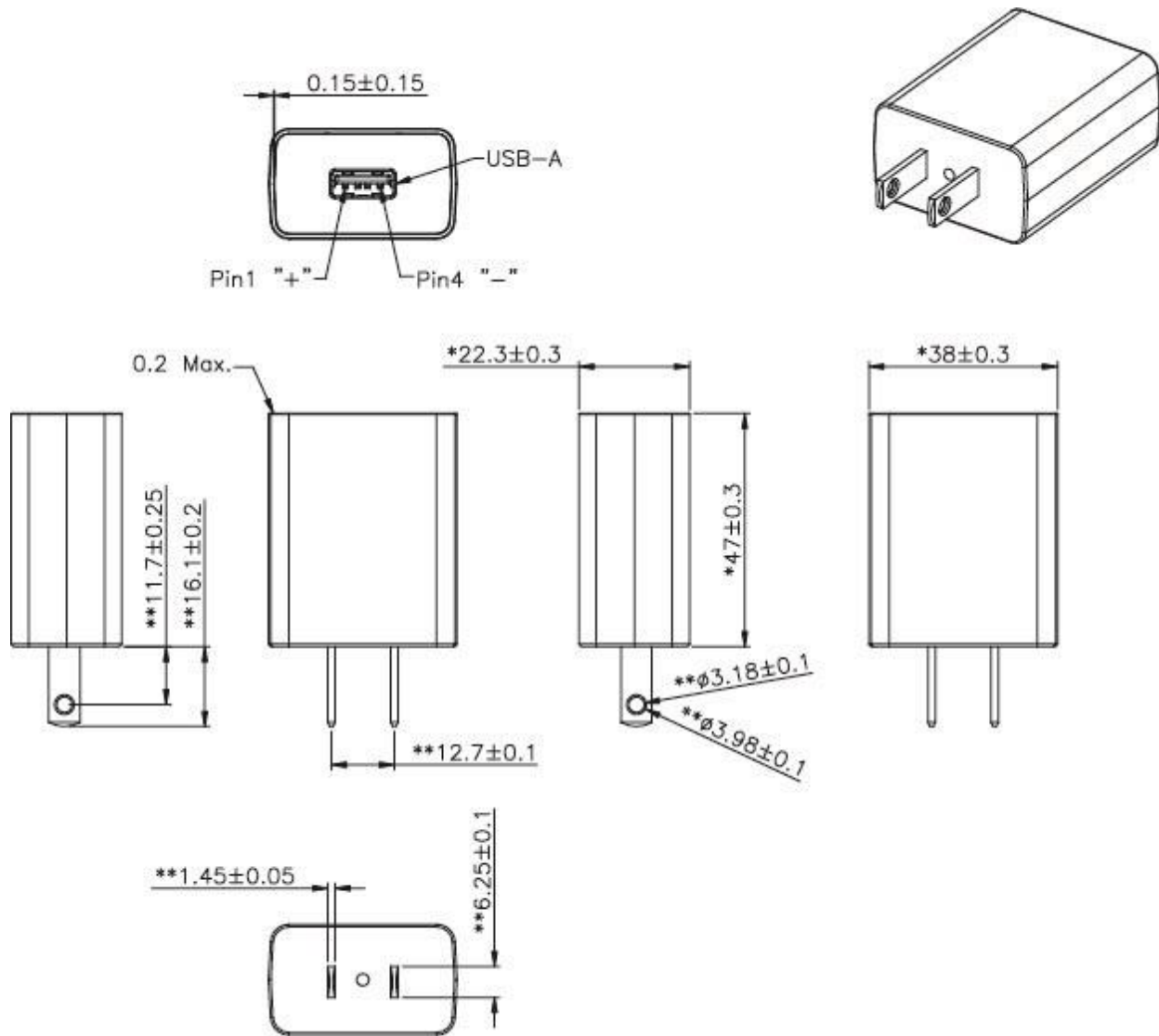
Pin 2 = 2-Pin and 3-Pin Short

Pin 3 = 2-Pin and 3-Pin Short

Pin 4 = V_o -**Notes:**

1. The characteristics defined are at ambient temperature of 25°C unless otherwise specified

Dimension Diagram Unit: mm

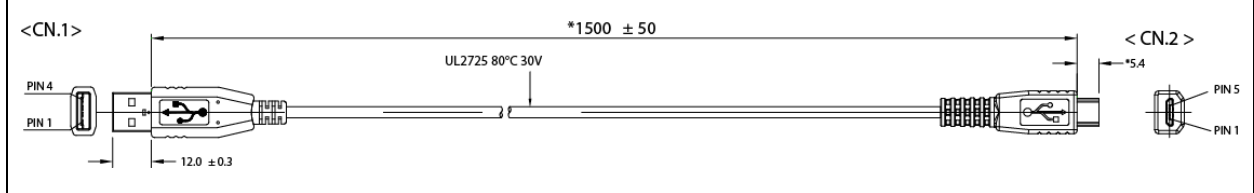
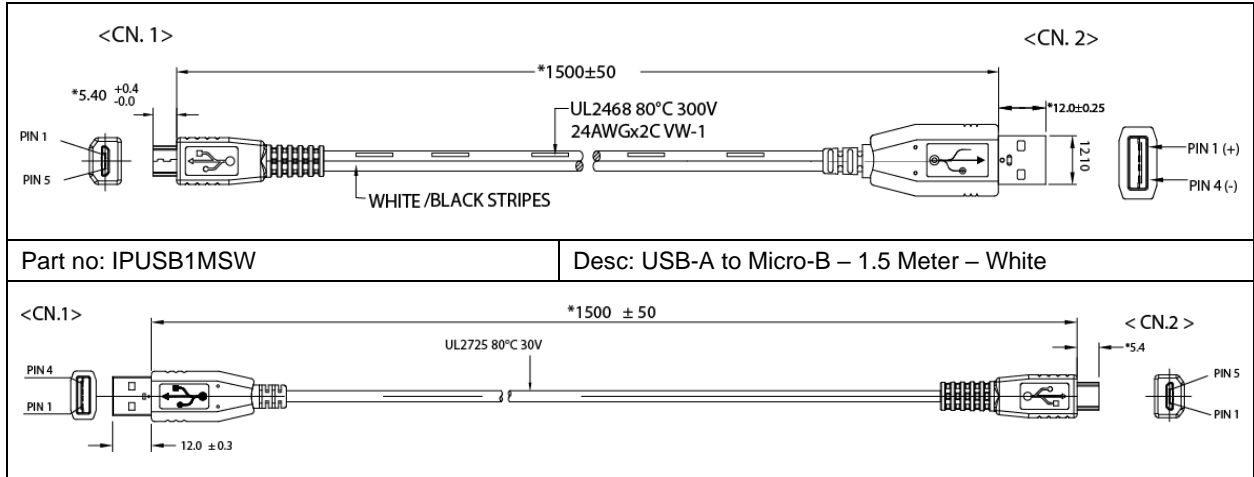




USB Cables – Sold Separately

Unit: mm

Part no: IP-USB1(C10)S	Desc: USB-A to Micro-B – 1 Meter – Black
Part no: IPUSB1CS	Desc: USB to Mini-B – 1.5 Meter – Black
Part no: IPUSB1MS	Desc: USB-A to Micro-B – 1.5 Meter – Black
Part no: IPUSB1M5LD	Desc: USB-A to Micro-B – 24AWG – Low Drop – 1.5 Meter – Black
Part no: IPUSB1P5	Desc: USB-A to Micro-B – 1 Meter – 24AWG – Black
Part no: IPUSB1P5W	Desc: USB-A to Micro-B – 1 Meter – 24AWG – White



X-ON Electronics

Largest Supplier of Electrical and Electronic Components

Click to view similar products for [Wall Mount AC Adapters](#) category:

Click to view products by [Phihong](#) manufacturer:

Other Similar products are found below :

[ADP-163 E](#) [ADP-167 J](#) [ADP-159 A](#) [PSAC05A-050L6](#) [DA10-050US](#) [WSU075-1000-R13](#) [WSU120-2000-R13](#) [WSU180-1330-13](#) [WSU120-2000-13](#) [WSU150-0800-13](#) [WSU075-3200-13](#) [WSU090-2500-13](#) [WSU050-2000-R13](#) [WSU240-1000-13](#) [WSU150-0560-13](#) [WSU240-0500-R13](#) [WSU075-1500-13](#) [WSU050-3000-13](#) [WSU120-1500-13](#) [WSU150-1200-13](#) [WSU120-1500-R13](#) [WSU240-0750-13](#) [WSU090-2500-R13](#) [WSU240-1500-13](#) [WSU180-0660-13](#) [WSU090-1300-13](#) [WSU050-1500-13](#) [WSU090-0800-13](#) [WSU120-0700-13](#) [WSU045-3000-13](#) [WSU120-3000-13](#) [WSU120-1000-R13](#) [WSU090-1300-R13](#) [WSU075-1000-13](#) [WSU060-1250-R13](#) [WSU060-1250-13](#) [WSU045-1500-R13](#) [PSAC05A-050L6M](#) [392007-01](#) [AC PLUG-AU3](#) [AC PLUG-MIX3](#) [TRE-A](#) [223-00011](#) [223-00012](#) [AA20R-480A-R](#) [223-00010](#) [KT1001US](#) [BB-SMI6B12V-P230C1](#) [FPBAG1-H](#) [QFWC-05-05](#)