



**40W Constant Current LED Driver
PDA040B Waterproof LED Driver Non-Dimming**



Features

- Class 2 Output per UL1310
- OVP, OCP, Over-Load and Short-Circuit Protection & Brownout Protection
- IP67 Rated
- ≥ 0.9 Power Factor Correction & THD <20%

Applications

- Down lights
- Area Lights
- Architectural lighting

Safety Approvals

- cUL/UL 8750
- Class 2 Output per UL1310
- CE
- IEC/EN61347-1, IEC/EN61347-2-13

Mechanical Characteristics

- Length: 162.5mm (6.39in)
- Width: 43mm (1.69in)
- Height: 32mm (1.26in)
- Weight: 342g (12.1oz)

Output Specifications

Model	DC Output Voltage			Output Current	Output Power
	Min.	Typ.	Max.		
PDA040B-700B	37.8V	-	54V	700mA	38W
PDA040B-1A0B	26.6V	-	38V	1050mA	40W
PDA040B-1A4B	18.2V	-	26V	1400mA	37W

Phihong is not responsible for any error, and reserves the right to make changes without notice. Please visit our website at www.phihong.com for the most up-to-date specifications and contact information.

INPUT:

AC Input Voltage Rating
100VAC to 277VAC

AC Input Frequency
47~63Hz

Maximum Input Current
≤ 0.8A

Leakage Current
0.25mA maximum

Power Factor
≥ 0.9

THD
< 20%

OUTPUT:
Output Current Ripple
<40%

Efficiency

Model	Typical Efficiency
PDA040B-700B	89%
PDA040B-1A0B	88%
PDA040B-1A4B	88%

Environmental:

Temperature

Operation case 75°C
Non-operation -40 to +80°C
Operating Humidity 20 to 95%

*Output derates from 50°C to 62°C Ta

EMC

FCC 47 Part 15 Class B, EN55015 Class B

Immunity

IEC61000-4-2
IEC61000-4-4
IEC61000-4-5
IEC61000-4-11

Dielectric Withstand (Hi-pot) Test

Primary to secondary: 3000VAC for 1 minute, 10mA

Insulation Resistance

Primary to secondary: >10M Ohm 500VDC, 1 Minute

FEATURES:

Short-Circuit Protection

The PSU will withstand a short circuit across the outputs without damage

Input Over Current Protection

The input power line will be fused with a 2A/300V fuse

Output Over-voltage Protection

Auto shutdown

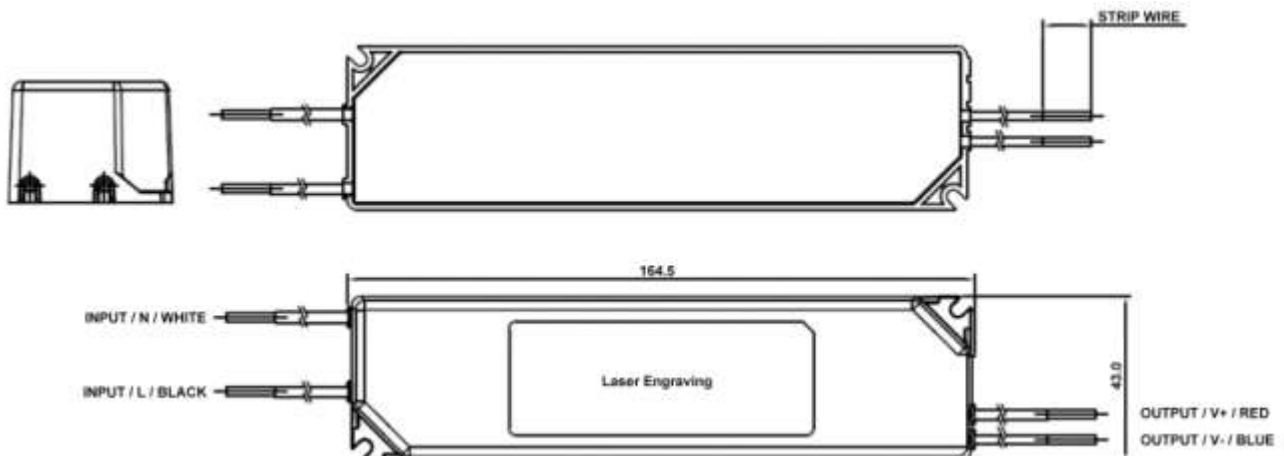
Input / Output Connections

Position	Terminal Color	Specification	Length
Input	Black	AWG16 Solid Wire	350mm
	White	AWG16 Solid Wire	350mm
Output	Red	AWG18 Solid Wire	350mm
	Blue	AWG18 Solid Wire	350mm

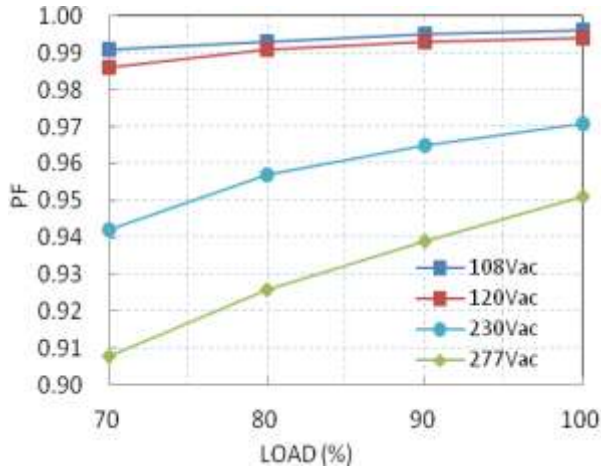
Warranty

5 Years

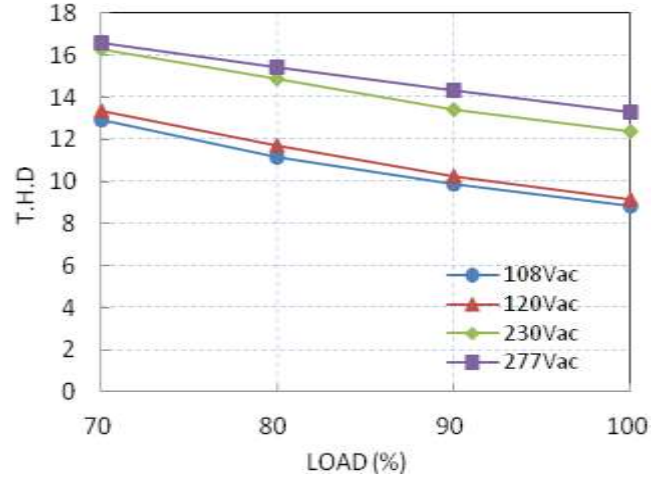
Dimension Diagram unit: mm



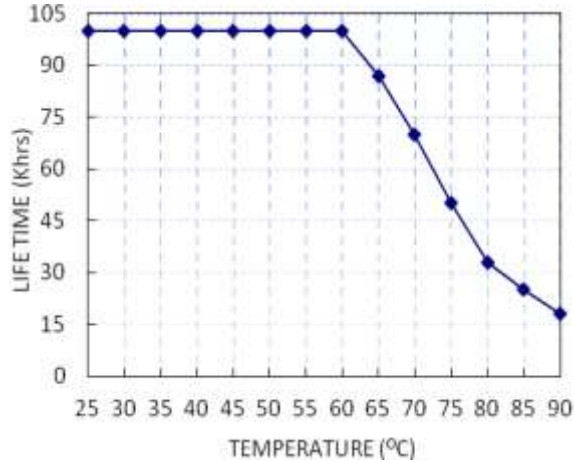
Power Factor vs. Load



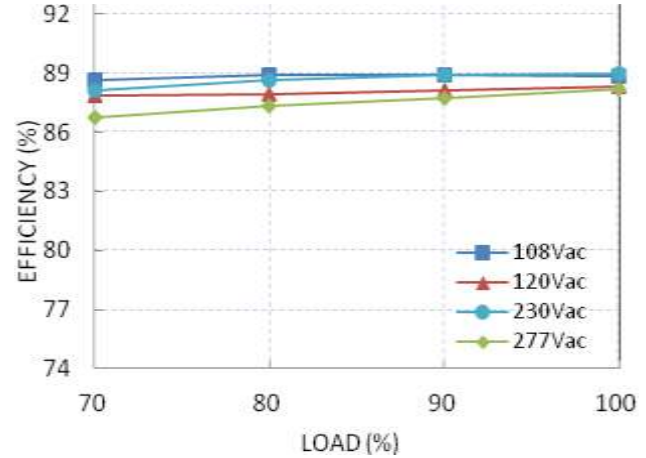
Total Harmonic Distortion vs. Load



Lifetime vs. Tc

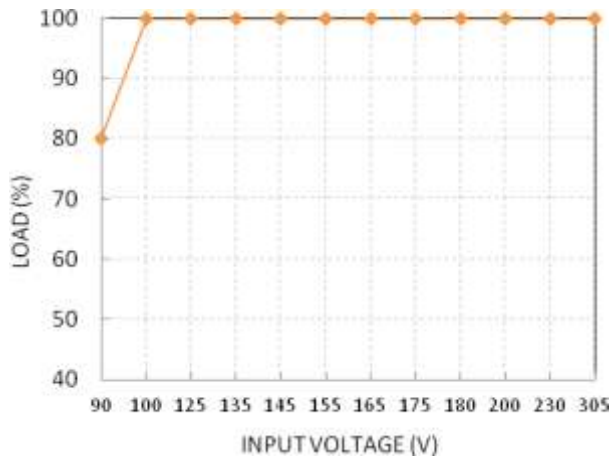


Efficiency vs. Load (PDA040B-700B)

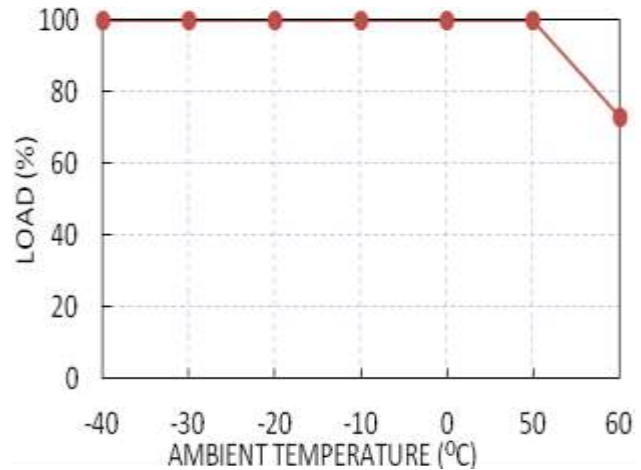


Temperature Rating

Static Characteristic: Load vs. Input Voltage



Derating Curve: Load vs Ta



X-ON Electronics

Largest Supplier of Electrical and Electronic Components

Click to view similar products for [LED Power Supplies](#) category:

Click to view products by [Phihong](#) manufacturer:

Other Similar products are found below :

[ESS015W-1000-12](#) [PDA-WIFI](#) [PIFC-K250F](#) [PITB-K222A](#) [ALD-514012PJ134](#) [LB240S24KH](#) [LMH020-SPLC-0000-0000001](#) [LMD600-0100-C1A7-7030000](#) [79534](#) [79535](#) [EUG-200S210DT](#) [ESS030W-1050-21](#) [ESS030W-0900-32](#) [BPOXL 4-12-035](#) [ESS010W-0350-24](#) [ESM060W-1400-42](#) [PDA080B-1A0G](#) [PDA150B-S1A5G](#) [ZPS-20](#) [SLM140W-1.05-130-ZA](#) [ESS015W-0700-18](#) [EUD-150S350DVA](#) [LWA320-C420-ARK-B](#) [HVG-240-48AB](#) [HVG-320-36AB](#) [HVG-320-54AB](#) [ELG-240-C1400AB](#) [EUK-150S105DV](#) [BXCS-12Z-N2P-B1-A](#) [BXPR-WN-01-A](#) [LN1224CV](#) [BXCS-12W-N2P-01-A](#) [HBG-160-24AB](#) [980100001200394](#) [980060001200376](#) [LC 14W 250-350MA FLEXC R ADV2](#) [LC 24W 500-600MA FLEXC R ADV2](#) [LC 36W 850-900MA FLEXC R ADV2](#) [LC 18W 24V ONE4ALL SC PRE](#) [LC 50W 200-350ML 170V FLEXC LP SNC4](#) [LC 25W 200-350ML 70V FLEXC LP SNC4](#) [LCBI 10W 350MA PHASE-CUT/1-10V LP](#) [LC 13W 300MA FIXC C SNC](#) [LC 10W 250MA FIXC SC SNC2](#) [LC 35W 800MA FIXC SR ADV2](#) [LC 38W 900MA FIXC SR ADV2](#) [LC 34W 800MA FIXC SC ADV2](#) [LC 44W 1050MA FIXC SC ADV2](#) [LC 38W 900MA 42V FIXC SRL ADV2](#) [PWM-40-36](#)