



## 40W Dimmable Constant Current LED Driver PDA040W Waterproof LED Driver with 0-10V Dimming



### Features

- Class 2 Output per UL1310
- OVP, OCP, Over-Load and Short-Circuit Protection & Brownout Protection
- IP67 Rated
- $\geq 0.9$  Power Factor Correction & THD  $< 20\%$

### Applications

- Down lights
- Area Lights
- Architectural lighting

### Safety Approvals

- cUL/UL 8750
- Class 2 Output per UL1310
- CE
- IEC/EN61347-1, IEC/EN61347-2-13

### Mechanical Characteristics

- Length: 162.5mm (6.39in)
- Width: 43mm (1.69in)
- Height: 32mm (1.26in)
- Weight: 342g (12.1oz)

### Output Specifications

Model	DC Output Voltage			Output Current	Output Power
	Min.	Typ.	Max.		
PDA040W-700B	37.8V	-	54V	700mA	38W
PDA040W-1A0B	26.6V	-	38V	1050mA	40W
PDA040W-1A4B	18.2V	-	26V	1400mA	37W

Phihong is not responsible for any error, and reserves the right to make changes without notice. Please visit our website at [www.phihong.com](http://www.phihong.com) for the most up-to-date specifications and contact information.

**INPUT:**

**AC Input Voltage Rating**  
100VAC to 277VAC

**AC Input Frequency**  
47~63Hz

**Maximum Input Current**  
≤ 0.8A

**Leakage Current**  
0.25mA maximum

**Power Factor**  
≥ 0.9

**THD**  
< 20%

**OUTPUT:**  
**Output Current Ripple**  
<40%

**Efficiency**

Model	Typical Efficiency
PDA040W-700B	89%
PDA040W-1A0B	88%
PDA040W-1A4B	88%

**Auxiliary Power Supply**  
12V semi regulated (11-14Vdc)  
0-10mA

**Voltage Dimming Function:**  
0-10VDC

**Resistive Dimming\***

Resistor must be placed between Dim+ and Dim- for operation.  
See following page for dimming table.

**Environmental:**

**Temperature**

Operation case                   +75°C  
Non-operation                   -40 to +80°C  
Operating Humidity           20 to 95%

\*Output derates from 50°C to 62°C Ta

**EMC**

FCC 47 Part 15 Class B, EN55015 Class B

**Immunity**

IEC61000-4-2  
IEC61000-4-4  
IEC61000-4-5  
IEC61000-4-11

**Dielectric Withstand (Hi-pot) Test**

Primary to secondary: 3000VAC for 1 minute, 10mA

**Insulation Resistance**

Primary to secondary: >10M Ohm 500VDC, 1 Minute

**FEATURES:**

**Short-Circuit Protection**

The PSU will withstand a short circuit across the outputs without damage

**Input Over Current Protection**

The input power line will be fused with a 2A/300V fuse

**Output Over-voltage Protection**

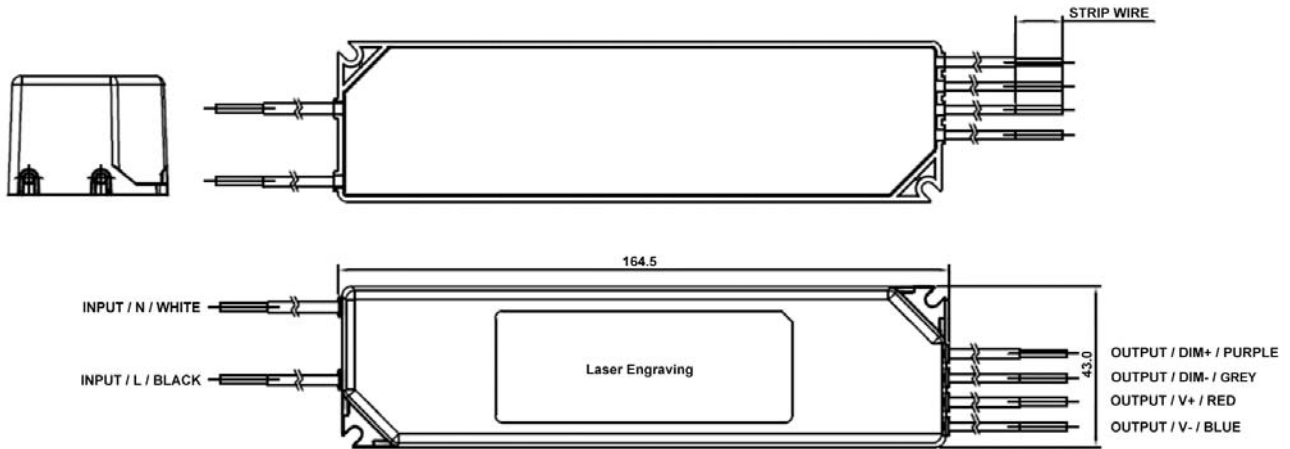
Auto shutdown

**Input / Output Connections**

Position	Terminal Color	Specification	Length
Input	Black	AWG16 Solid Wire	350mm
	White	AWG16 Solid Wire	350mm
Output	Red	AWG18 Solid Wire	350mm
	Blue	AWG18 Solid Wire	350mm
Dim+	Purple	AWG20 Solid Wire	350mm
Dim-	Grey	AWG20 Solid Wire	350mm

**Warranty**

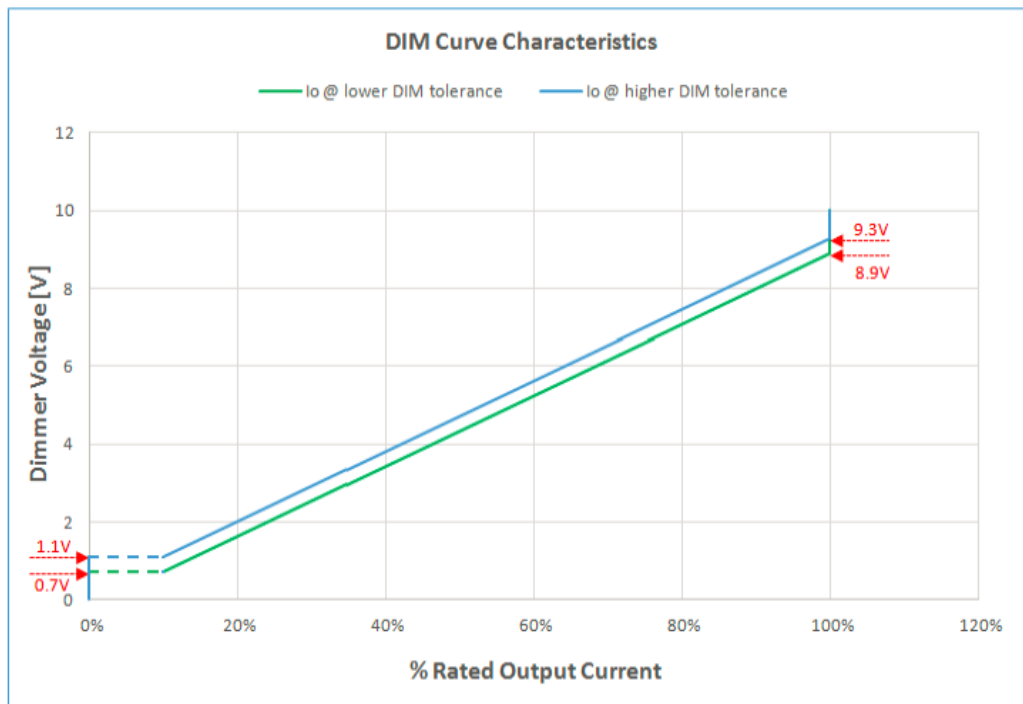
5 Years



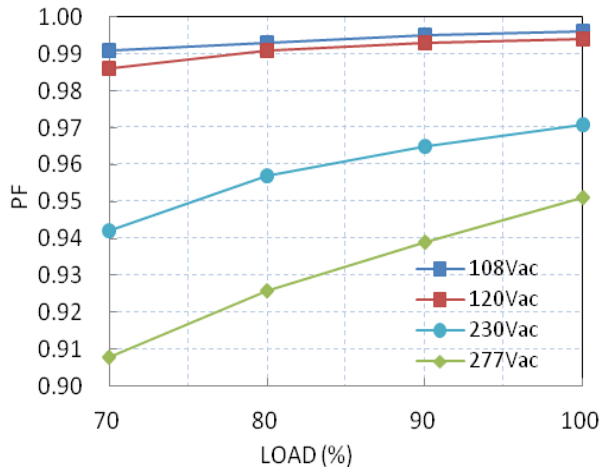
### Dimming Characteristics

#### Resistive Dimming Functions

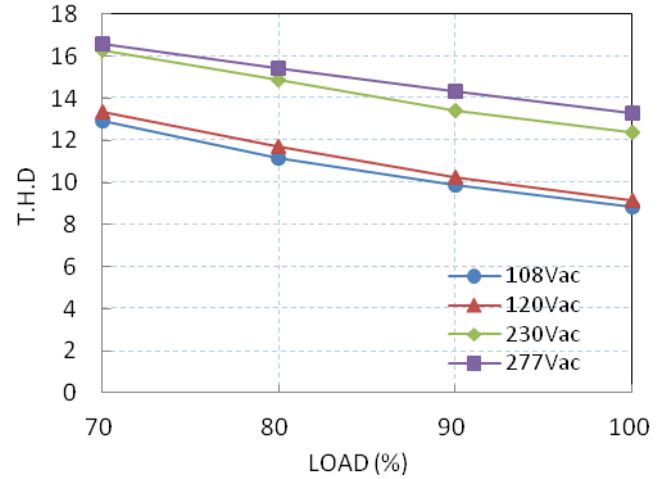
Resistance Value	0kΩ	9kΩ	13kΩ	23kΩ	45kΩ	68kΩ	91kΩ
Dim Voltage	0V	0.9V	1.3V	2.3V	4.5V	6.8V	9.1V
Output Current	Off	Off	15%	25%	50%	75%	100%



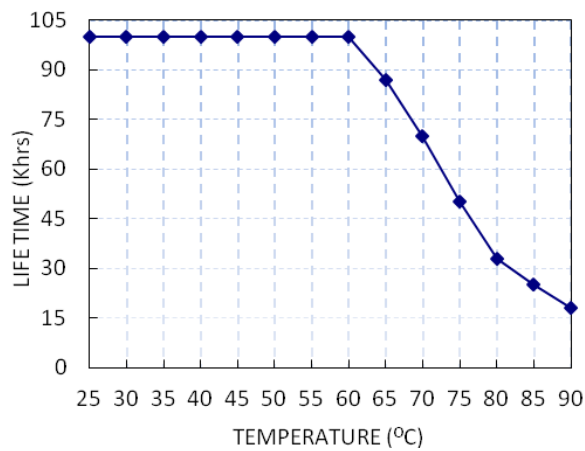
Power Factor vs. Load



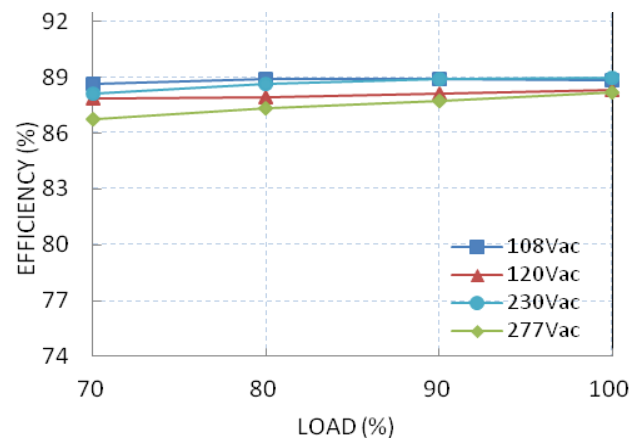
Total Harmonic Distortion vs. Load



Lifetime vs. Tc

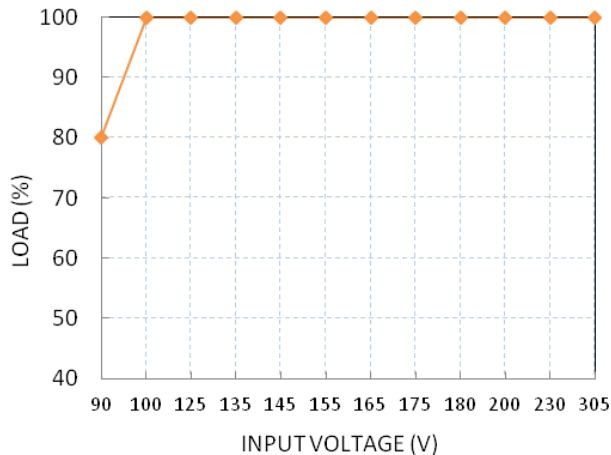


Efficiency vs. Load (PDA040W-700B)

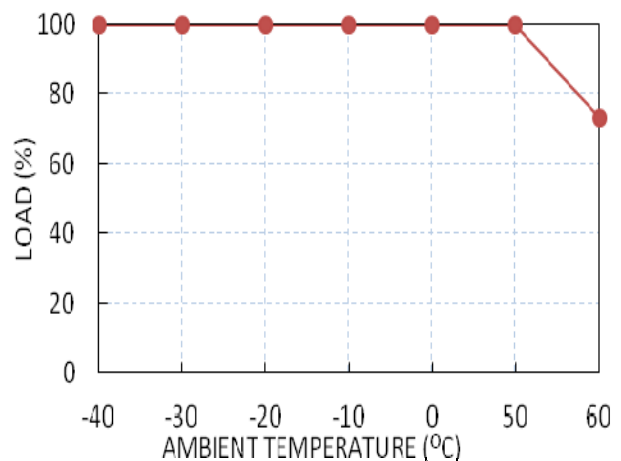


Temperature Rating

Static Characteristic: Load vs. Input Voltage



Derating Curve: Load vs Ta



## X-ON Electronics

Largest Supplier of Electrical and Electronic Components

*Click to view similar products for [LED Power Supplies](#) category:*

*Click to view products by [Phihong](#) manufacturer:*

Other Similar products are found below :

[ESS015W-1000-12](#) [PDA-WIFI](#) [PIFC-K250F](#) [PITB-K222A](#) [ALD-514012PJ134](#) [LB240S24KH](#) [LMH020-SPLC-0000-0000001](#) [LMD600-0100-C1A7-7030000](#) [79534](#) [79535](#) [EUG-200S210DT](#) [ESS030W-1050-21](#) [ESS030W-0900-32](#) [BPOXL 4-12-035](#) [ESS010W-0350-24](#) [ESM060W-1400-42](#) [PDA080B-1A0G](#) [PDA150B-S1A5G](#) [ZPS-20](#) [SLM140W-1.05-130-ZA](#) [ESS015W-0700-18](#) [EUD-150S350DVA](#) [LWA320-C420-ARK-B](#) [HVG-240-48AB](#) [HVG-320-36AB](#) [HVG-320-54AB](#) [ELG-240-C1400AB](#) [EUK-150S105DV](#) [LN1224CV](#) [HBG-160-24AB](#) [980100001200394](#) [980060001200376](#) [LC 14W 250-350MA FLEXC R ADV2](#) [LC 24W 500-600MA FLEXC R ADV2](#) [LC 36W 850-900MA FLEXC R ADV2](#) [LC 18W 24V ONE4ALL SC PRE](#) [LC 50W 200-350ML 170V FLEXC LP SNC4](#) [LC 25W 200-350ML 70V FLEXC LP SNC4](#) [LCBI 10W 350MA PHASE-CUT/1-10V LP](#) [LC 13W 300MA FIXC C SNC](#) [LC 10W 250MA FIXC SC SNC2](#) [LC 35W 800MA FIXC SR ADV2](#) [LC 38W 900MA FIXC SR ADV2](#) [LC 34W 800MA FIXC SC ADV2](#) [LC 44W 1050MA FIXC SC ADV2](#) [LC 38W 900MA 42V FIXC SRL ADV2](#) [PWM-40-36](#) [PWM-60-36](#) [LUD-060S150BSF](#) [ESS010W-0750-12](#)