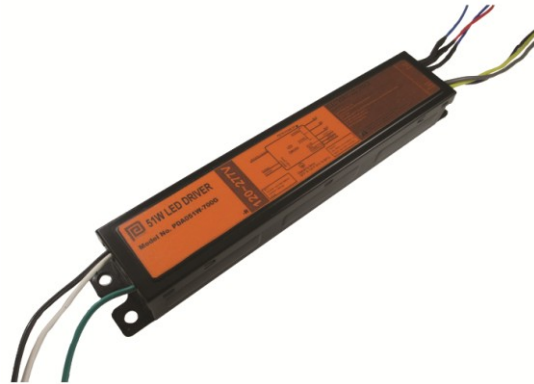




51W LED Driver with 2 Channel Constant Current Outputs PDA051W 0-10V Dimming LED Power Supply



Features

- 2 Channel Output
- OVP, OCP, OTP and Short-Circuit Protection & Brownout Protection
- IP65 Rated
- Class 2 Output per UL1310
- THD <20% & ≥ 0.9 Power Factor

Applications

- Troffers

Safety Approvals

- cUL/UL8750
- Class 2 Output per UL1310

Mechanical Characteristics

- Length: 242mm (9.53in)
- Width: 43.5mm (1.71in)
- Height: 30.5mm (1.2in)
- Weight: 650g

Output Specifications

Channel 1~2

Model	DC Output Voltage			Output Current	Output Power
	Min.	Typ.	Max.		
PDA051W-700G	30V	33V	36V	700mA	25.5W

Phihong is not responsible for any error, and reserves the right to make changes without notice. Please visit our website at www.phihong.com for the most up-to-date specifications and contact information.

INPUT:

AC Input Voltage Rating
108~304VAC

Nominal AC Input Voltage
120 to 277VAC

AC Input Frequency
47~63 Hz

Maximum Input Current
≤ 0.64A

Leakage Current
0.75mA maximum

Power Factor
≥ 0.9

THD
< 20%

OUTPUT:

Output Current Ripple
450mA(p-p)

Efficiency
81% at 120VAC
83% at 277VAC
Typical Efficiency 85%

Environmental:

Temperature
Operation Tc 0 to 70°C
Non-operation -40 to +85°C
Operating Humidity 10% to 95%

EMC

FCC 47 CFR Part 15, Class A

Immunity

IEC61000-4-2
IEC61000-4-5
IEC61000-4-11

Dielectric Withstand (Hi-pot) Test

Primary to secondary: 3000VAC for 1 minute, 10mA

Insulation Resistance

Primary to secondary: >5M Ohm 500VDC, 1 Minute

Short-Circuit Protection

Latch requires power cycle to restart

Output Over-voltage Protection

Max Voltage Limit 63V

Over Temperature Protection

Max Temperature Limit 85°C

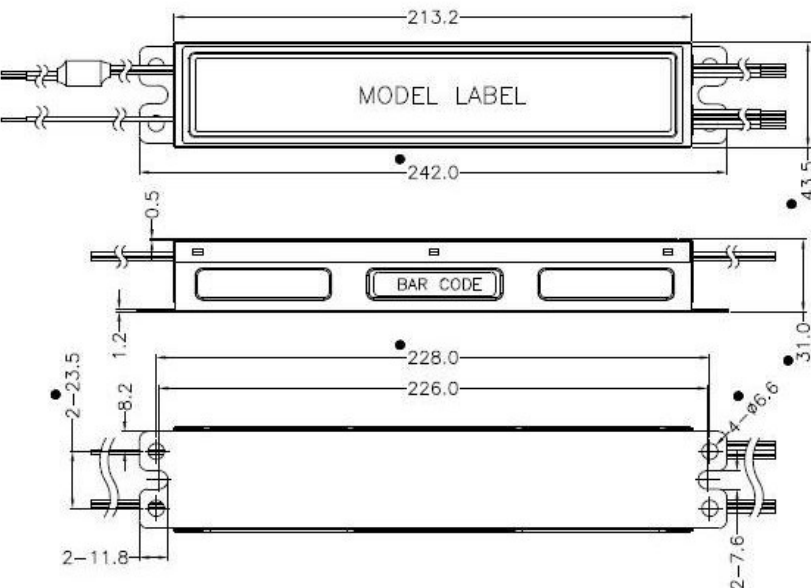
Input / Output Connections

Position	Terminal Color	Specification	Length
Input	Black	AWG16 Solid Wire	360mm
	White	AWG16 Solid Wire	360mm
	Green/Yellow	AWG16 Solid Wire	220mm
Output	Red(+)	AWG18 Solid Wire	200mm
	Blue(-)	AWG18 Solid Wire	200mm
Dim+	Purple(+)	AWG18 Solid Wire	200mm
Dim-	Grey(-)	AWG18 Solid Wire	200mm
Auxiliary	Yellow	AWG18 Solid Wire	200mm

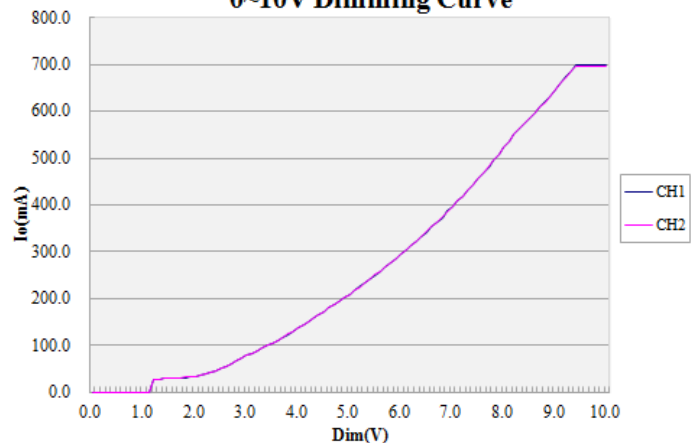
Warranty

5 Years

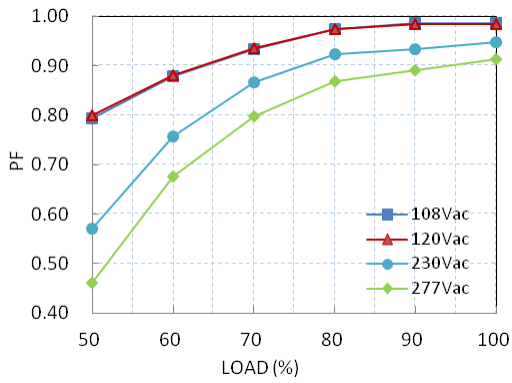
Dimesino Diagram unit: mm



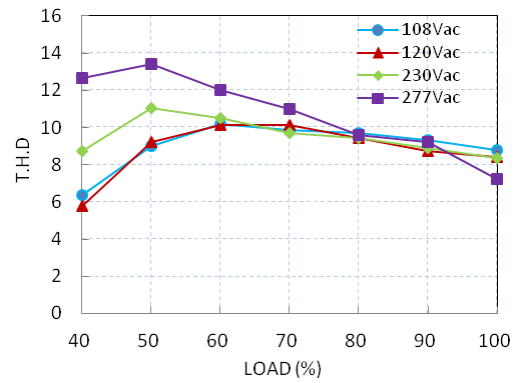
0~10V Dimming Curve



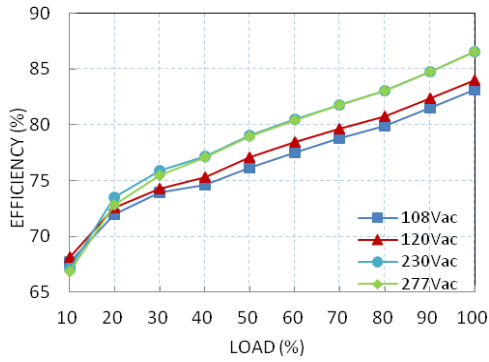
Power Factor vs. Load



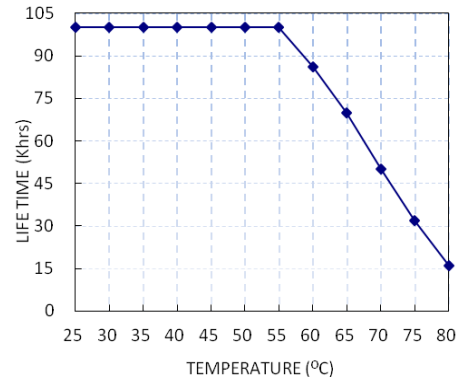
Total Harmonic Distortion vs. Load



Lifetime vs. Tc



Efficiency vs. Load



X-ON Electronics

Largest Supplier of Electrical and Electronic Components

Click to view similar products for [LED Power Supplies](#) category:

Click to view products by [Phihong](#) manufacturer:

Other Similar products are found below :

[ESS015W-1000-12](#) [PDA-WIFI](#) [PIFC-K250F](#) [PITB-K222A](#) [ALD-514012PJ134](#) [LB240S24KH](#) [LMH020-SPLC-0000-0000001](#) [LMD600-0100-C1A7-7030000](#) [79534](#) [79535](#) [EUG-200S210DT](#) [ESS030W-1050-21](#) [ESS030W-0900-32](#) [BPOXL 4-12-035](#) [ESS010W-0350-24](#) [ESM060W-1400-42](#) [PDA080B-1A0G](#) [PDA150B-S1A5G](#) [ZPS-20](#) [SLM140W-1.05-130-ZA](#) [ESS015W-0700-18](#) [EUD-150S350DVA](#) [LWA320-C420-ARK-B](#) [HVG-240-48AB](#) [HVG-320-36AB](#) [HVG-320-54AB](#) [ELG-240-C1400AB](#) [EUK-150S105DV](#) [BXCS-12Z-N2P-B1-A](#) [BXPR-WN-01-A](#) [LN1224CV](#) [BXCS-12W-N2P-01-A](#) [HBG-160-24AB](#) [980100001200394](#) [980060001200376](#) [LC 14W 250-350MA FLEXC R ADV2](#) [LC 24W 500-600MA FLEXC R ADV2](#) [LC 36W 850-900MA FLEXC R ADV2](#) [LC 18W 24V ONE4ALL SC PRE](#) [LC 50W 200-350ML 170V FLEXC LP SNC4](#) [LC 25W 200-350ML 70V FLEXC LP SNC4](#) [LCBI 10W 350MA PHASE-CUT/1-10V LP](#) [LC 13W 300MA FIXC C SNC](#) [LC 10W 250MA FIXC SC SNC2](#) [LC 35W 800MA FIXC SR ADV2](#) [LC 38W 900MA FIXC SR ADV2](#) [LC 34W 800MA FIXC SC ADV2](#) [LC 44W 1050MA FIXC SC ADV2](#) [LC 38W 900MA 42V FIXC SRL ADV2](#) [PWM-40-36](#)