



**60W Constant Voltage LED Driver
PDA060B Waterproof LED Driver Non-Dimming**



Features

- Class 2 per UL1310
- OVP, OCP, Over-Load and Short-Circuit Protection
- >0.9 Power Factor Correction
- IP67 Rating - waterproof
- THD <20%
- UL 8750 Compliant
- Brownout/Brownout Recovery

Applications

- Down lights
- Area Lights
- Architectural lighting

Safety Approvals (Pending)

- cUL/UL

Mechanical Characteristics

- Length: 162.5mm (6.39in)
- Width: 43mm (1.69in)
- Height: 32mm (1.26in)
- Weight: 342g (12.1oz)

Output Specifications

Model	Output Current Range			DC Output Voltage	Output Power
	Min.	Typ.	Max.		
PDA060B-24VB	0A	-	2.5A	24V	60W
PDA060B-48VB	0A	-	1.25A	48V	60W

Phihong is not responsible for any error, and reserves the right to make changes without notice. Please visit our website at www.phihong.com for the most up-to-date specifications and contact information.

INPUT:

AC Input Voltage Rating
120VAC to 277VAC

AC Input Frequency
47~63Hz

Maximum Input Current
≤ 0.9A

Leakage Current
0.25mA maximum

Power Factor
≥ 0.9

THD
Less than 20%

OUTPUT:
Output Voltage Ripple
≤8% (p-p)

Efficiency

Model	Typical Efficiency
PDA060B-24VB	89%
PDA060B-48VB	91%

Environmental:

Temperature

Operation* -40 to +50°C

Non-operation -40 to +80°C

Operating Humidity 20 to 95%

*Output derates from 50°C to 70°C

EMC

FCC 47 Part 18 Class B

Immunity

IEC61000-4-2

IEC61000-4-4

IEC61000-4-5

IEC61000-4-11

Dielectric Withstand (Hi-pot) Test

Primary to secondary: 3000VAC for 1 minute, 10mA

Insulation Resistance

Primary to secondary: >10M Ohm 500VDC, 1 Minute

FEATURES:

Short-Circuit Protection

The PSU will withstand a short circuit across the outputs without damage, auto-restart

Input Over Current Protection

The input power line will be fused with a 2A/300V fuse

Output Over-voltage Protection

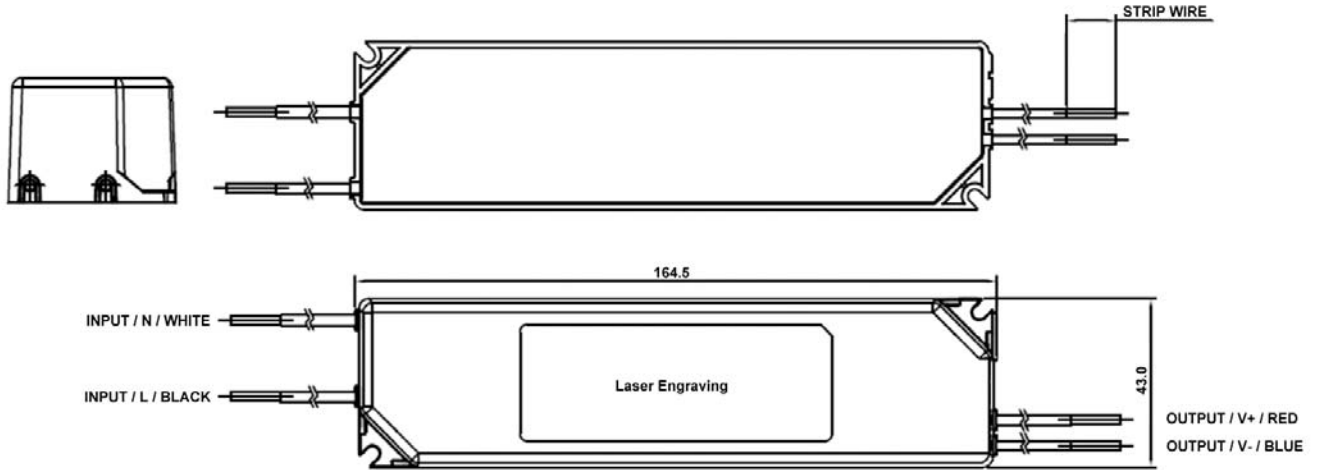
Latching, auto shutdown

Input / Output Connections

Position	Terminal Color	Specification
Input	Black	AWG16 Solid Wire
	White	AWG16 Solid Wire
Output	Red	AWG18 Solid Wire
	Blue	AWG18 Solid Wire

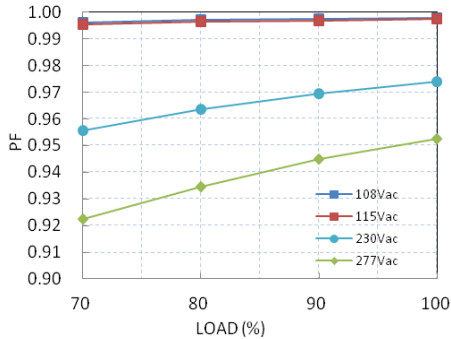
Warranty

5 Years

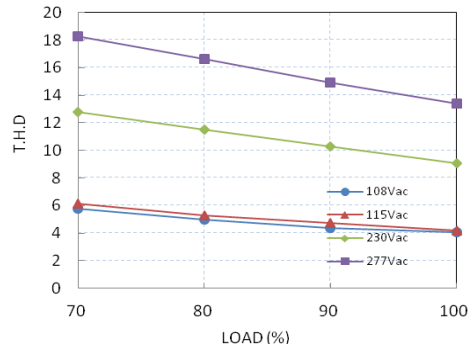


Typical Characteristics

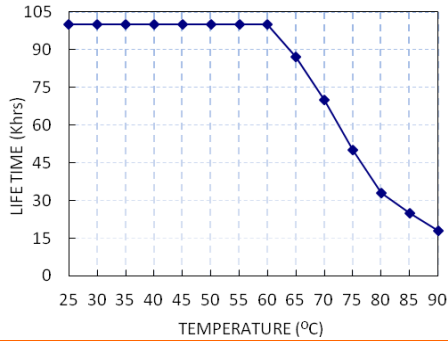
Power Factor vs. Load



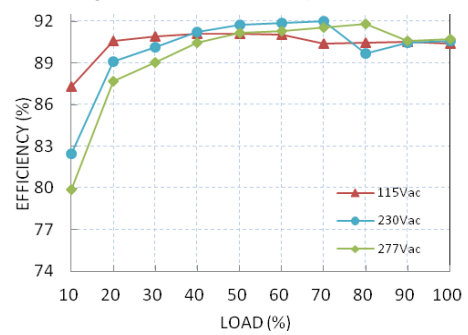
Total Harmonic Distortion vs. Load



Lifetime vs. Tc

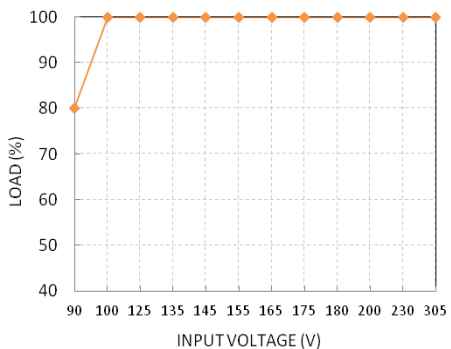


Derating Curve: Load vs. Ta (PDA060B-48VB)

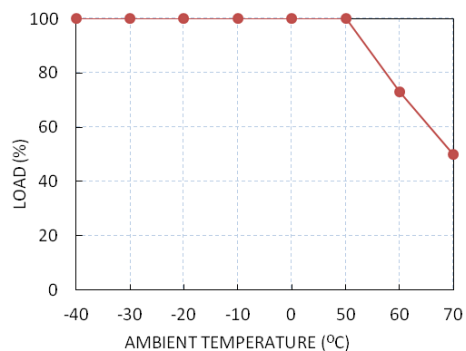


Temperature Rating

Static Characteristic: Load vs. Input Voltage



Efficiency vs. Load



X-ON Electronics

Largest Supplier of Electrical and Electronic Components

Click to view similar products for [LED Power Supplies](#) category:

Click to view products by [Phihong](#) manufacturer:

Other Similar products are found below :

[ESS015W-1000-12](#) [PDA-WIFI](#) [PIFC-K250F](#) [PITB-K222A](#) [ALD-514012PJ134](#) [LB240S24KH](#) [LMH020-SPLC-0000-0000001](#) [LMD600-0100-C1A7-7030000](#) [79534](#) [79535](#) [EUG-200S210DT](#) [ESS030W-1050-21](#) [ESS030W-0900-32](#) [BPOXL 4-12-035](#) [ESS010W-0350-24](#) [ESM060W-1400-42](#) [PDA080B-1A0G](#) [PDA150B-S1A5G](#) [ZPS-20](#) [SLM140W-1.05-130-ZA](#) [ESS015W-0700-18](#) [EUD-150S350DVA](#) [LWA320-C420-ARK-B](#) [HVG-240-48AB](#) [HVG-320-36AB](#) [HVG-320-54AB](#) [ELG-240-C1400AB](#) [EUK-150S105DV](#) [LN1224CV](#) [HBG-160-24AB](#) [980100001200394](#) [980060001200376](#) [LC 14W 250-350MA FLEXC R ADV2](#) [LC 24W 500-600MA FLEXC R ADV2](#) [LC 36W 850-900MA FLEXC R ADV2](#) [LC 18W 24V ONE4ALL SC PRE](#) [LC 50W 200-350ML 170V FLEXC LP SNC4](#) [LC 25W 200-350ML 70V FLEXC LP SNC4](#) [LCBI 10W 350MA PHASE-CUT/1-10V LP](#) [LC 13W 300MA FIXC C SNC](#) [LC 10W 250MA FIXC SC SNC2](#) [LC 35W 800MA FIXC SR ADV2](#) [LC 38W 900MA FIXC SR ADV2](#) [LC 34W 800MA FIXC SC ADV2](#) [LC 44W 1050MA FIXC SC ADV2](#) [LC 38W 900MA 42V FIXC SRL ADV2](#) [PWM-40-36](#) [PWM-60-36](#) [LUD-060S150BSF](#) [ESS010W-0750-12](#)