



Powering Lighting Solutions



PHIHONG LED DRIVERS

LED DRIVER ADAPTERS



BULB REPLACEMENT DRIVERS



CONSTANT CURRENT LED DRIVERS



LOW PROFILE DRIVERS



IP67 RATED DRIVERS



MULTIPLE-OUTPUT DRIVERS



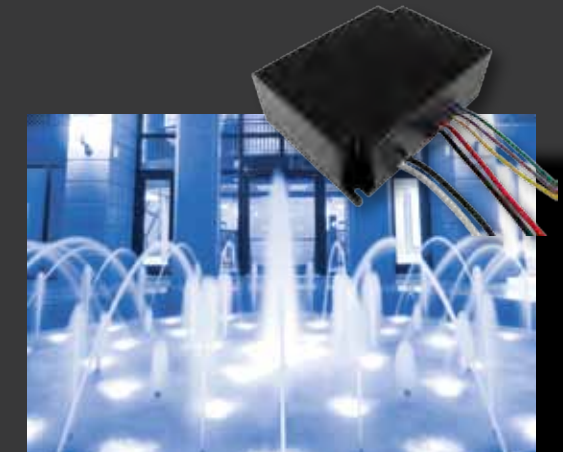
EXTENDED LIFE DRIVERS



RETROFIT BULB DRIVERS



OPEN-FRAME POWER SUPPLIES



Engineered for efficiency



lasting performance



Headquarters:

Phihong Technology Co. Ltd.
No. 568, Fu Xing San Road
Gui Shan Tao Yuan Hsien, Taiwan, R.O.C.
Tel: 886-3-3277288
Fax: 886-3-3185999
E-mail: phsales@phihong.com.tw
www.phihong.com.tw

Worldwide Subsidiaries:

Phihong USA - Fremont, CA
Corporate Office
47800 Fremont Blvd.
Fremont, CA 94538, USA
Tel: 1-510-445-0100
Fax: 1-510-445-1678
E-mail: usasales@phihongusa.com
www.phihong.com

Phihong China - Shanghai
Building 17, No. 1515, GuMei Rd.
XuHui District, Shanghai 200233, P.R.C.
Tel: 86-21-6127-6218
Fax: 86-21-6127-6227
E-mail: phsales@phihong.com.tw

Phihong Europe - Netherlands
Wattstraat 50
2171 TR Sassenheim
The Netherlands
Tel: +31 (0)252 225910
Fax: +31 (0)252 218764
Email: sales@phihongeu.com





About Phihong

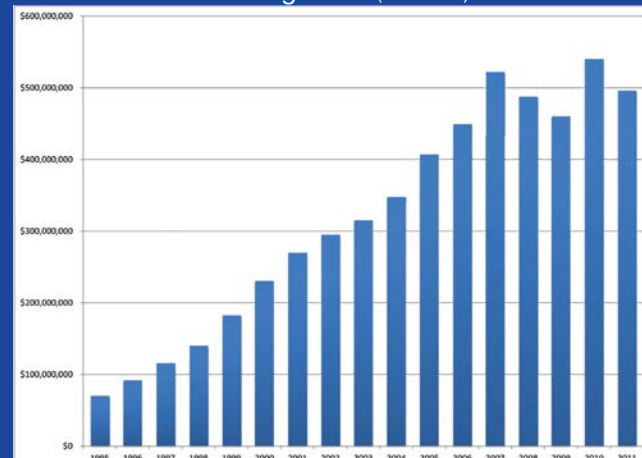
Since 1972, Phihong has been at the forefront of technological innovation in power electronics manufacture and design. By employing the latest in technology and research and development, Phihong's customers have continued to expect and receive the best possible products with on-time delivery and exceeding worldwide standards in efficiency and safety.

With a truly international span covering North America, Europe, and Asia, Phihong has design labs and local sales support centers in California, New York, The Netherlands, China, Japan, and Taiwan; Phihong is a top choice for OEMs serving datacom, telecom, personal electronics, networking, lighting, and industrial markets.

Focusing on engineering excellence, product reliability, and a commitment to customer service, sales have continued to grow proving a continued dominance in the power adapter industry with a broad line of cost competitive highly efficient products that comply with international standards.

OEMs also choose Phihong to partner on custom projects to meet the needs of very special programs not satisfied by the standard product offerings. With a long history in both standard and custom power designs, Phihong has one of the market's broadest lines of cost-competitive and highly reliable power solutions.

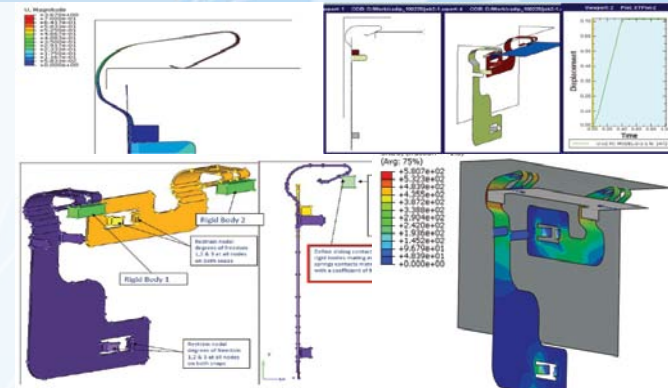
Phihong Sales (in millions)



QUALITY

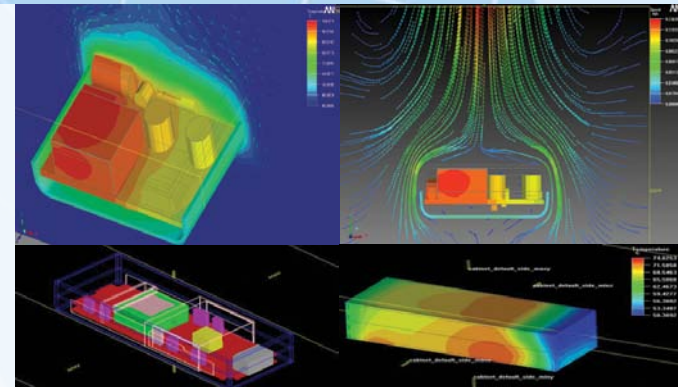
TECHNOLOGY

DEMONSTRATING ENGINEERING EXCELLENCE



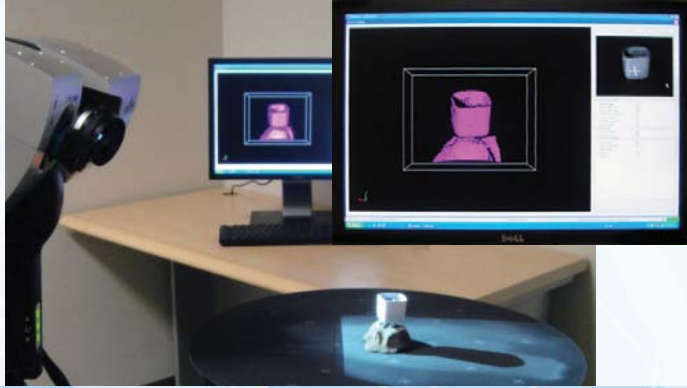
Finite Element Analysis

- Virtually stress test materials in the design
- Reduce the number of prototypes
- Dramatically increase speed from development to production



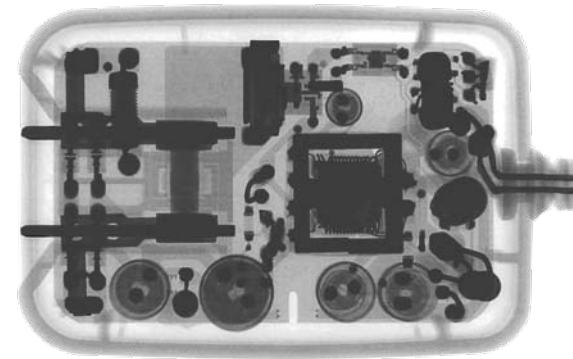
Thermal Simulation

- Virtually simulate thermal stress tests for individual parts to full PCBs
- Analyze the heating and cooling of parts in relation to each other to accurately diagnose conflicts before they occur
- Reduce the number of prototypes needed for real time thermal stress tests



3D Scanning

- Verify prototype case tooling matches design
- Monitor structural changes accurately following stress tests for more detailed analysis
- Enhances integration with complex parts



Non-Destructive Failure Analysis

- Analyze internal structure for quality without damage to external packaging
- Verify soldering and component connections are accurate and appropriate



Process Automation

- Increases production speeds, capacity, and overall product quality
- Minimizes costs as the cost of labor increases and reducing the need for manual processes



Automated Optical Inspection

- All defects found; nothing overlooked by human error
- Quantitative measure instead of operator judgement using a complex algorithm to detect faults

OEM LIGHTING SOLUTIONS



Linear Fluorescent Replacement

- Retrofit kits for existing lamp fixtures
- 2 foot, 4 foot, and 8 foot T8, T10, and T12 replacement bulbs available
- Warm or cool lamp colors
- Universal input compatible
- UL rated enclosure



LED Down Light Fixtures

- Directional or diffuse styles
- Housing may be recessed or externally surface mounted



LED Bulbs

- Edison style connectors for home applications
- UL rated housing
- Warm or cool lamp colors
- Available with remote dimming



20-25	51-80	B31	Bologna
20-55	51-80	B30	Krasnodar
21-30	51-80	A10	Bangkok
21-35	51-80	A04	Moscow
23-05	89-99	A02	via Luxor
23-20	112-125	A18	Hurghada
00-30	112-125	A16	Frankfurt
01-10	51-80	C60	Stuttgart
03-45	51-80	B35	Stuttgart
05-25	51-80	A17	Belgrade
05-25	51-80	A17	Munich
05-35	51-80	C51	Munich
05-45	27-31	C58	Amsterdam
05-55	51-80	C55	Zurich
06-05	51-80	A10	Zagreb



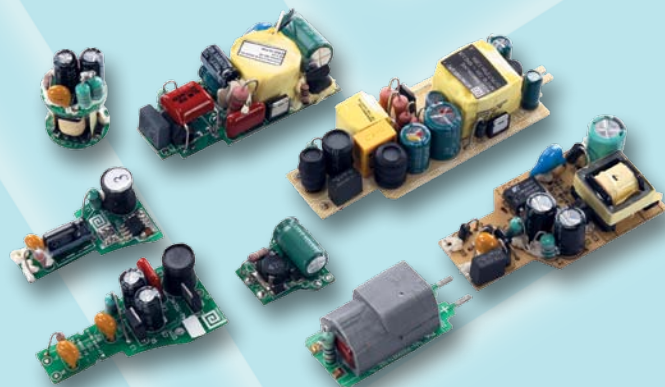
LED Drivers

- Available in Constant Current/Constant Voltage
- Indoor/Outdoor or open frame design
- Standard dimming on outdoor units
- Low profile design for ease of integration
- Dimming via 0-10V, Dali, Zigbee, Zwave or 802.11 wireless



Fluorescent Ballasts

- Available for both fluorescent and compact fluorescent fixtures
- T5, T8, and T12 ballasts available
- Powers 1', 2' and 4' lamps
- Parallel or serial wiring
- High ballast factor
- Dimming options
- Instant, rapid or programmable start
- Meets UL and NEMA and enables fixtures to comply with ENERGY STAR standards



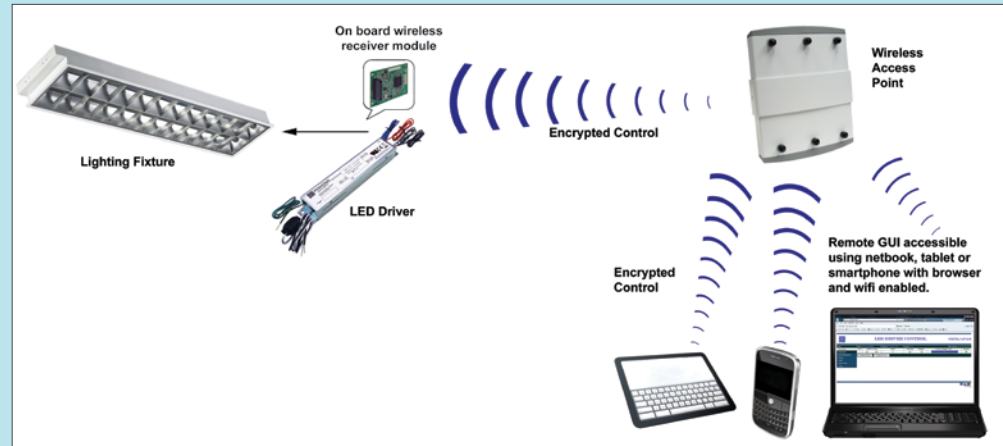
Bulb Replacement LED Drivers

- Incandescent and CFL bulb retrofits
- Universal AC input
- Low profile PCB design for ease of integration
- Minimizes need for extra components
- MR16, E14, E17, GU10 and E27
- Triac and Low Voltage Dimming

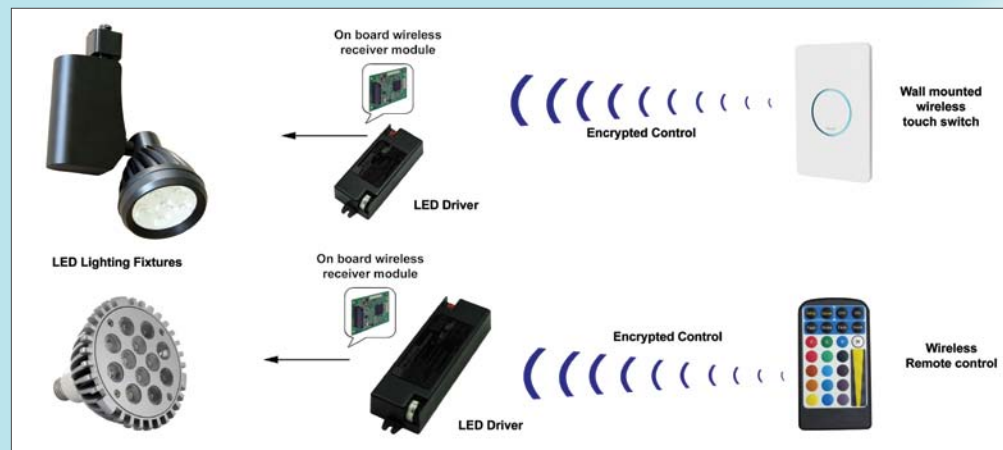
OEM LIGHTING SOLUTIONS

OEM LED Lighting Remote Control Systems

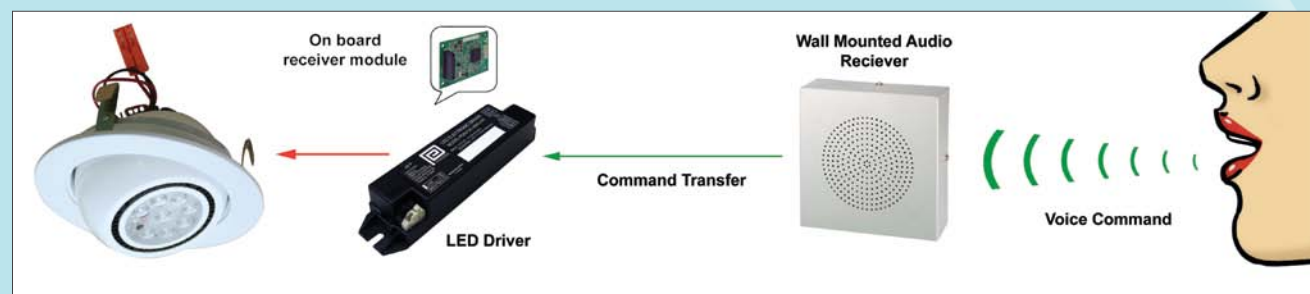
Wireless Control



Remote and Touch Controls

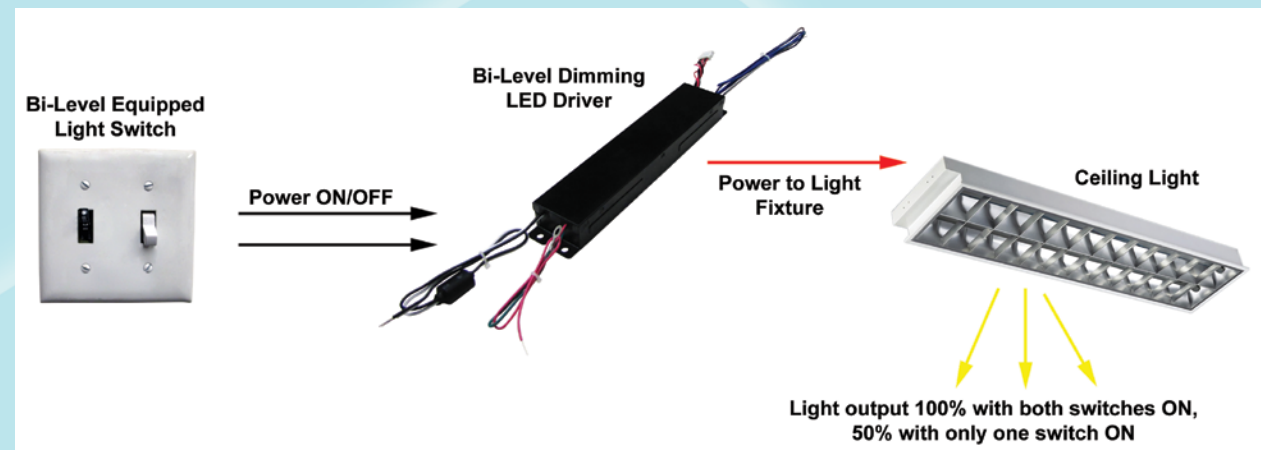


Voice Activation Control

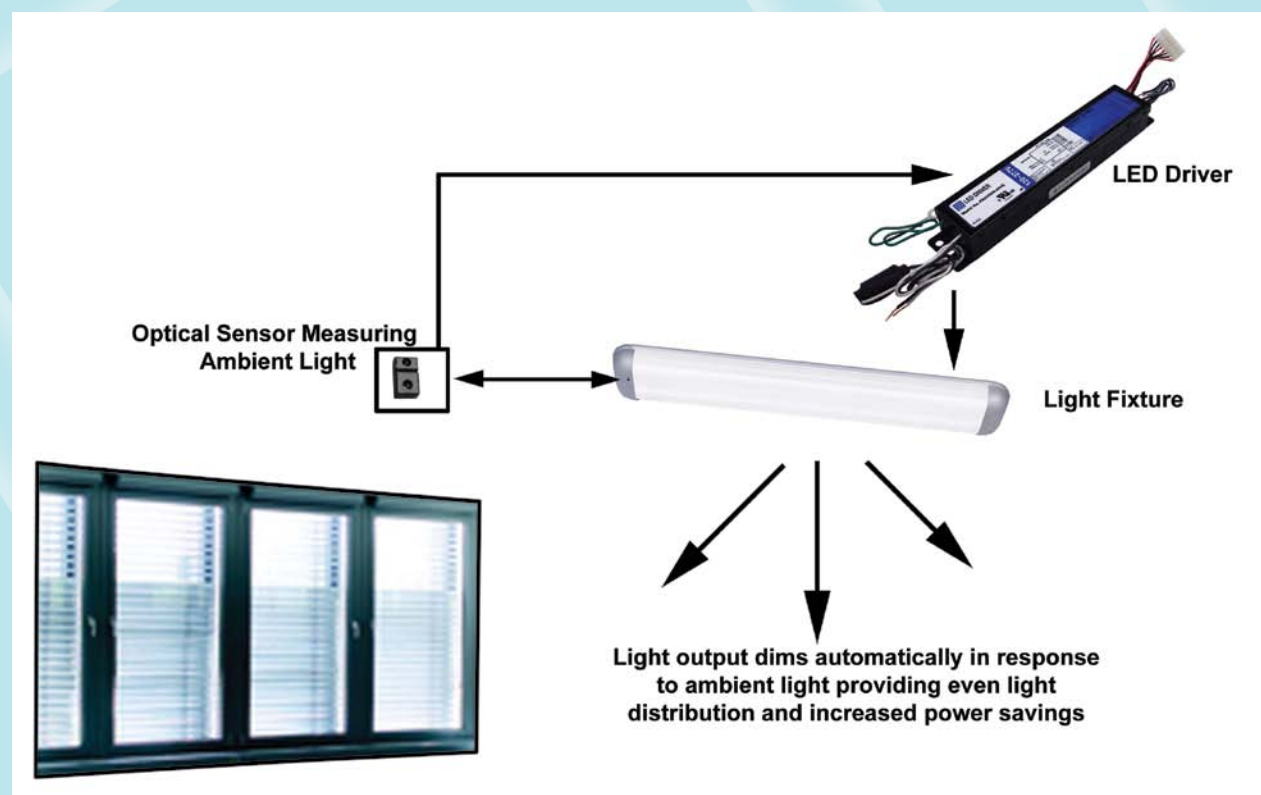




Bi-level dimming



Optical Sensor Dimming



OEM LIGHTING CONTROL SOLUTIONS

CONSTANT CURRENT LED DRIVERS

Features

- 230VAC to 240VAC input
- Power Factor >0.90 and THD <20%
- Class 2 per UL1310
- Low profile design for discreet placement
- Non-dimmable
- 3 Year warranty



Rated Power	Nominal Output Current	DC Output Voltage Range			Efficiency	Dimensions	Model Name
		Min.	Typ.	Max			
6	700mA	2.5V	-	7.5V	>70%	58mm x 35mm x 20.5mm	PDA006A-700C-H*
10	700mA	7.5V	-	12V	>75%	106mm x 40mm x 21mm	PDA010A-700C-R
15	350mA	17.5V	-	42V	>77%	132mm x 40mm x 21mm	PDA015A-350C-R
30	700mA	15V	-	42V	>82%	132mm x 40mm x 21mm	PDA030A-700C-R

Notes: *This unit is designed to be halogen free

Features

- 120VAC input
- Power Factor >0.90 and THD <20%
- Class 2 per UL1310
- Low profile design for discreet placement
- Non-dimmable
- 3 Year warranty



Rated Power	Nominal Output Current	DC Output Voltage Range			Efficiency	Dimensions	Model Name
		Min.	Typ.	Max			
6	700mA	2.5V	-	7.5V	>70%	58mm x 35mm x 20.5mm	PDA006B-700C-H*
10	700mA	7.5V	-	12V	>75%	106mm x 40mm x 21mm	PDA010B-700C-R
15	350mA	17.5V	-	42V	>82%	132mm x 40mm x 21mm	PDA015B-350C-R
30	700mA	15V	-	42V	>82%	132mm x 40mm x 21mm	PDA030B-700C-R

Notes: *This unit is designed to be halogen free

Features

- 120VAC input
- Power Factor >0.90 and THD <20%
- Class 2 per UL1310
- 100K hours lifetime for 'H' models
- Non-dimmable
- 3 Year warranty (8 years on 'H' models)



Rated Power	Nominal Output Current	DC Output Voltage Range			Efficiency	Dimensions	Model Name
		Min.	Typ.	Max			
12W	350mA	20V	-	34.3V	>75%	132mm x 30mm x 22mm	PDA012B-350C-R
12W	350mA	20V	-	34.3V	>75%	132mm x 30mm x 22mm	PDA012B-350C-H-R*

Notes: *This unit is available as a higher reliability model from the base model. Average rated lifespan is increased to 100,000 hours.

Features

- 230VAC to 277VAC input
- Power Factor >0.90 and THD <20%
- Class 2 per UL1310
- 100K hours lifetime for 'H' models
- Non-dimmable
- 3 Year warranty (8 years on 'H' models)



Rated Power	Nominal Output Current	DC Output Voltage Range			Efficiency	Dimensions	Model Name
		Min.	Typ.	Max			
12W	350mA	20V	-	34.3V	>77%	132mm x 30mm x 22mm	PDA012A-350C-R
12W	350mA	20V	-	34.3V	>77%	132mm x 30mm x 22mm	PDA012A-350C-H-R*

Notes: *This unit is available as a higher reliability model from the base model. Average rated lifespan is increased to 100,000 hours.

Features

- 120VAC to 277VAC input
- IP67 rated for harsh locations
- Power Factor >0.90 and THD <20%
- Class 2 per UL1310
- Non-dimmable
- 5 year warranty



COMING SOON



Rated Power	Nominal Output Current	DC Output Voltage			Efficiency	Dimensions	Product Name
		Min.	Nom.	Max.			
25W	450mA	39V	-	55V	>84%	80mm x 78mm x 25.2mm	PDA025B-450B-R
25W	700mA	25V	-	36V	>84%	80mm x 78mm x 25.2mm	PDA025B-700B-R
25W	1040mA	17V	-	25V	>84%	80mm x 78mm x 25.2mm	PDA025B-1A0B-R
25W	1400mA	12V	-	18V	>84%	80mm x 78mm x 25.2mm	PDA025B-1A4B-R
25W	1750mA	10V	-	14V	>84%	80mm x 78mm x 25.2mm	PDA025B-1A8B-R
25W	2100mA	8V	-	12V	>84%	80mm x 78mm x 25.2mm	PDA025B-2A1B-R

For more information including product datasheets visit the website www.phihong.com/LED

NON-DIMMABLE CONSTANT CURRENT DRIVERS

CONSTANT CURRENT LED DRIVERS

Features

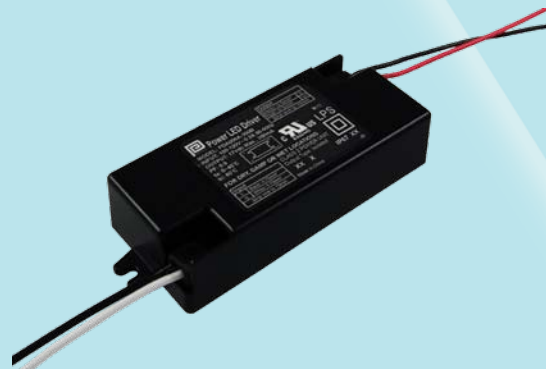
- 120VAC input wall plug input
- IP67 rated for harsh locations
- Power Factor >0.90 and THD <20%
- Class 2 per UL1310
- Non-dimmable



Rated Power	Nominal Output Current	DC Output Voltage Range			Efficiency	Dimensions	Model Name
		Min.	Typ.	Max			
6W	350mA	9V	-	17V	>73%	66.5mm x 31mm x 38mm	PDA006A-350S-R
6W	700mA	5V	-	8.6V	>73%	66.5mm x 31mm x 38mm	PDA006A-700S-R
6W	1000mA	4V	-	6V	>69%	66.5mm x 31mm x 38mm	PDA006A-1A0S-R
12W	350mA	17V	-	34V	>77%	71.5mm x 33.75mm x 46mm	PDA012A-350S-R
12W	700mA	9V	-	17V	>77%	71.5mm x 33.75mm x 46mm	PDA012A-700S-R
12W	1000mA	6V	-	12V	>77%	71.5mm x 33.75mm x 46mm	PDA012A-1A0S-R
12W	1500mA	6V	-	8V	>77%	71.5mm x 33.75mm x 46mm	PDA012A-1A5S-R
24W	700mA	20V	-	34V	>82%	90.5mm x 55.5mm x 38mm	PDA024A-700S-R
24W	1000mA	16V	-	24V	>82%	90.5mm x 55.5mm x 38mm	PDA024A-1A0S-R
24W	1500mA	10V	-	16V	>82%	90.5mm x 55.5mm x 38mm	PDA024A-1A5S-R

Features

- 120VAC input
- IP67 rated for harsh locations
- Power Factor >0.90 and THD <20%
- Class 2 per UL1310
- Non-dimmable
- 5 year warranty



Rated Power	Nominal Output Current	DC Output Voltage Range			Efficiency	Dimensions	Model Name
		Min.	Typ.	Max			
6W	350mA	9V	-	17V	>73%	105.8mm x 39.8mm x 20.8mm	PDA006A-350B-R
6W	700mA	5V	-	8.6V	>73%	105.8mm x 39.8mm x 20.8mm	PDA006A-700B-R
6W	1000mA	4V	-	6V	>69%	105.8mm x 39.8mm x 20.8mm	PDA006A-1A0B-R

Features

- 120VAC input
- IP67 rated for harsh locations
- Power Factor >0.90 and THD <20%
- Class 2 per UL1310
- Non-dimmable
- 5 year warranty



Rated Power	Nominal Output Current	DC Output Voltage			Efficiency	Dimensions	Model Name
		Min.	Nom.	Max.			
28W	1400mA	15V	-	21V	>84%	80mm x 78mm x 25.2mm	PDA028A-1A4B-R
30W	2100mA	10V	-	14V	>85%	80mm x 78mm x 25.2mm	PDA030A-2A1B-R
35W	1040mA	24V	-	35V	>85%	80mm x 78mm x 25.2mm	PDA035A-1A0B-R

Features

- 120VAC to 277VAC input
- IP67 rated for harsh locations
- Power Factor >0.90 and THD <20%
- Class 2 per UL1310
- Non-dimmable
- 5 year warranty



Rated Power	Nominal Output Current	DC Output Voltage			Efficiency	Dimensions	Model Name
		Min.	Nom.	Max.			
38W	700mA	39V	-	54V	>87%	162.5mm x 43mm x 32mm	PDA040B-700B-R
40W	1050mA	28V	-	40V	>87%	162.5mm x 43mm x 32mm	PDA040B-1A0B-R
37W	1400mA	18V	-	26V	>87%	162.5mm x 43mm x 32mm	PDA040B-1A4B-R

Features

- 120VAC to 277VAC input
- IP67 rated for harsh locations
- Power Factor >0.90 and THD <20%
- Class 2 per UL1310
- Non-dimmable
- 5 year warranty



COMING SOON



Rated Power	Nominal Output Current	DC Output Voltage			Efficiency	Dimensions	Model Name
		Min.	Nom.	Max.			
60W	1070mA	39.2V	-	56V	>87%	162.5mm x 43mm x 32mm	PDA060B-1A0B-R
60W	1500mA	28V	-	40V	>87%	162.5mm x 43mm x 32mm	PDA060B-1A5B-R
60W	2300mA	18.2V	-	26V	>87%	162.5mm x 43mm x 32mm	PDA060B-1A5B-R

NON-DIMMABLE CONSTANT CURRENT DRIVERS

CONSTANT CURRENT LED DRIVERS

Features

- 120VAC input
- IP67 rated for harsh locations
- Power Factor >0.90 and THD <20%
- Class 2 per UL1310
- Triac dimming
- 5 year warranty



COMING SOON



Rated Power	Nominal Output Current	DC Output Voltage			Efficiency	Dimensions	Model Name
		Min.	Nom.	Max.			
10W	350mA	21V	-	30V	>78%	80mm x 78mm x 25.2mm	PDA010N-350B-R
10W	700mA	8.6V	-	14V	>78%	80mm x 78mm x 25.2mm	PDA010N-700B-R
10W	1050mA	6V	-	10V	>78%	80mm x 78mm x 25.2mm	PDA010N-1A0B-R
14W	350mA	24V	-	30V	>80%	80mm x 78mm x 25.2mm	PDA014N-350B-R

Features

- 120VAC to 277VAC input
- IP67 rated for harsh locations
- Power Factor >0.90 and THD <20%
- Class 2 per UL1310
- 0-10V dimming
- 5 year warranty



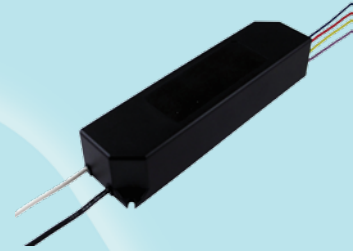
COMING SOON



Rated Power	Nominal Output Current	DC Output Voltage			Efficiency	Dimensions	Model Name
		Min.	Nom.	Max.			
25W	450mA	39V	-	55V	>84%	80mm x 78mm x 25.2mm	PDA025W-450B-R
25W	700mA	25V	-	36V	>84%	80mm x 78mm x 25.2mm	PDA025W-700B-R
25W	1040mA	17V	-	25V	>84%	80mm x 78mm x 25.2mm	PDA025W-1A0B-R
25W	1400mA	12V	-	18V	>84%	80mm x 78mm x 25.2mm	PDA025W-1A4B-R
25W	1750mA	10V	-	14V	>84%	80mm x 78mm x 25.2mm	PDA025W-1A8B-R
25W	2100mA	8V	-	12V	>84%	80mm x 78mm x 25.2mm	PDA025W-2A1B-R

Features

- 120VAC to 277VAC input
- IP67 rated for harsh locations
- Power Factor >0.90 and THD <20%
- Class 2 per UL1310
- 0-10V dimming
- 5 year warranty



Rated Power	Nominal Output Current	DC Output Voltage			Efficiency	Dimensions	Model Name
		Min.	Nom.	Max.			
38W	700mA	39V	-	54V	>87%	162.5mm x 43mm x 32mm	PDA040W-700B-R
40W	1050mA	28V	-	40V	>87%	162.5mm x 43mm x 32mm	PDA040W-1A0B-R
37W	1400mA	18V	-	26V	>87%	162.5mm x 43mm x 32mm	PDA040W-1A4B-R

Features

- 120VAC to 277VAC input
- IP67 rated for harsh locations
- Power Factor >0.90 and THD <20%
- Class 2 per UL1310
- 0-10V dimming
- 5 year warranty



Rated Power	Nominal Output Current	DC Output Voltage			Efficiency	Dimensions	Model Name
		Min.	Nom.	Max.			
38W	700mA	39V	-	54V	>87%	95mm x 71mm x 32mm	PDA041W-700B-R
40W	1050mA	28V	-	40V	>87%	95mm x 71mm x 32mm	PDA041W-1A0B-R
37W	1400mA	18V	-	26V	>87%	95mm x 71mm x 32mm	PDA041W-1A4B-R

Features

- 120VAC to 277VAC input
- IP67 rated for harsh locations
- Power Factor >0.90 and THD <20%
- Class 2 per UL1310
- 0-10V dimming
- 5 year warranty



COMING SOON



Rated Power	Nominal Output Current	DC Output Voltage			Efficiency	Dimensions	Model Name
		Min.	Nom.	Max.			
60W	1070mA	39.2V	-	56V	>87%	162.5mm x 43mm x 32mm	PDA060W-1A0B-R
60W	1500mA	28V	-	40V	>87%	162.5mm x 43mm x 32mm	PDA060W-1A5B-R
60W	2300mA	18.2V	-	26V	>87%	162.5mm x 43mm x 32mm	PDA060W-2A3B-R

DIMMABLE CONSTANT CURRENT DRIVERS

CONSTANT CURRENT LED DRIVERS

Features

- 120VAC to 277VAC input
- Rated IP67 waterproof
- Power Factor >0.90 and THD <20%
- Non-dimmable
- 5 year warranty



Rated Power	Nominal Output Current	DC Output Voltage			Efficiency	Dimensions	Model Name
		Min.	Nom.	Max.			
50W	1400mA	25V	-	36V	>88%	242mm x 43.5mm x 30.5mm	PDA050B-1A4G-R
50W	1750mA	20V	-	28V	>88%	242mm x 43.5mm x 30.5mm	PDA050B-1A8G-R

Features

- 120VAC to 277VAC input
- Rated IP67 waterproof
- Power Factor >0.90 and THD <20%
- Non-dimmable
- 5 year warranty



Rated Power	Nominal Output Current	DC Output Voltage Range			Efficiency	Dimensions	Model Name
		Min.	Typ.	Max			
72W	3000mA	18V	-	24V	>85%	242mm x 43.5mm x 30.5mm	PDA072B-3A0G-R
80W	700mA	90V	-	114V	>85%	242mm x 43.5mm x 30.5mm	PDA080B-700G-R
80W	1000mA	50V	-	76V	>85%	242mm x 43.5mm x 30.5mm	PDA080B-1A0G-R
80W	1670mA	35V	-	48V	>85%	242mm x 43.5mm x 30.5mm	PDA080B-1A6G-R

Features

- 120VAC to 277VAC input
- Rated IP67 waterproof
- Power Factor >0.90 and THD <20%
- Non-dimmable
- 5 year warranty



Rated Power	Nominal Output Current	DC Output Voltage Range			Efficiency	Dimensions	Model Name
		Min.	Typ.	Max			
125W	700mA	134V	-	178.6V	>91%	194mm x 68mm x 37mm	PDA125B-700F-R
125W	1050mA	94V	-	119V	>90%	194mm x 68mm x 37mm	PDA125B-1A0F-R
125W	1400mA	67V	-	89.3V	>90%	194mm x 68mm x 37mm	PDA125B-1A4F-R
125W	2000mA	47V	-	62.5V	>88%	194mm x 68mm x 37mm	PDA125B-2A0F-R
125W	2800mA	34V	-	44.6V	>88%	194mm x 68mm x 37mm	PDA125B-2A8F-R

Features

- 120VAC to 277VAC input
- IP67 waterproof
- Class 2 per UL1310
- 0-10V dimming
- 4 constant-current outputs
- Power Factor >0.90 and THD <20%
- 5 year warranty



Rated Power	Nominal Output Current*	DC Output Voltage			Efficiency	Dimensions	Model Name
		Min.	Nom.	Max.			
37W	350mA	22V	-	26.5V	>86%	242mm x 43.5mm x 30.5mm	PDA037W-350G-R
50W	350mA	25V	-	36V	>86%	242mm x 43.5mm x 30.5mm	PDA050W-350G-R
50W	450mA	22V	-	26.5V	>86%	242mm x 43.5mm x 30.5mm	PDA050W-450G-R

Notes: *Output current is measured per channel

Features

- 120VAC to 277VAC input
- IP67 waterproof
- Class 2 per UL1310
- Bi-level dimming
- 4 constant-current outputs
- Power Factor >0.90 and THD <20%
- 5 year warranty



COMING SOON



Rated Power	Nominal Output Current*	DC Output Voltage			Efficiency	Dimensions	Model Name
		Min.	Nom.	Max.			
50W	350mA	25V	-	36V	>86%	242mm x 43.5mm x 30.5mm	PDA050K-350G-R
50W	450mA	22V	-	26.5V	>86%	242mm x 43.5mm x 30.5mm	PDA050K-450G-R

Notes: *Output current is measured per channel

Features

- 120VAC to 277VAC input
- IP67 waterproof
- Power Factor >0.90 and THD <20%
- Bi-level dimming
- 5 year warranty



COMING SOON



Rated Power	Nominal Output Current	DC Output Voltage			Efficiency	Dimensions	Model Name
		Min.	Nom.	Max.			
50W	1400mA	25V	-	36V	>86%	242mm x 43.5mm x 30.5mm	PDA050K-1A4G-R
50W	1750mA	20V	-	28V	>86%	242mm x 43.5mm x 30.5mm	PDA050K-1A8G-R

DIMMABLE CONSTANT CURRENT DRIVERS

CONSTANT CURRENT LED DRIVERS

Features

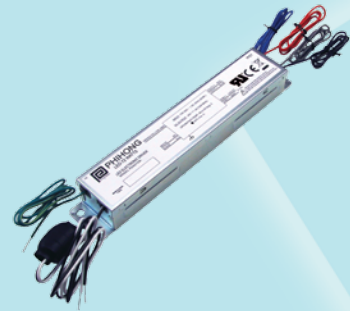
- 120VAC to 277VAC input
- IP67 waterproof
- Class 2 per UL1310
- 0-10V dimming
- Power Factor >0.90 and THD <20%
- 5 year warranty



Rated Power	Nominal Output Current	DC Output Voltage			Efficiency	Dimensions	Model Name
		Min.	Nom.	Max.			
50W	1400mA	25V	-	36V	>88%	242mm x 43.5mm x 30.5mm	PDA050W-1A4G-R
50W	1750mA	20V	-	28V	>88%	242mm x 43.5mm x 30.5mm	PDA050W-1A8G-R

Features

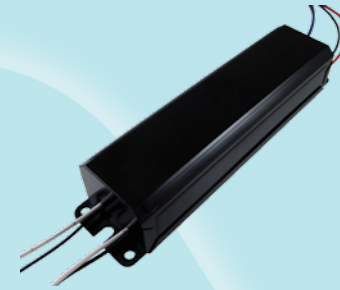
- 120VAC to 277VAC input
- IP67 waterproof
- 0-10V dimming
- Power Factor >0.90 and THD <20%
- 5 year warranty



Rated Power	Nominal Output Current	DC Output Voltage Range			Efficiency	Dimensions	Model Name
		Min.	Typ.	Max			
72W	3000mA	18V	-	24V	>85%	242mm x 43.5mm x 30.5mm	PDA072W-3A0G-R
80W	700mA	90V	-	114V	>85%	242mm x 43.5mm x 30.5mm	PDA080W-700G-R
80W	1000mA	50V	-	76V	>85%	242mm x 43.5mm x 30.5mm	PDA080W-1A0G-R
80W	1670mA	35V	-	48V	>85%	242mm x 43.5mm x 30.5mm	PDA080W-1A6G-R

Features

- 120VAC to 277VAC input
- IP67 waterproof
- 0-10V dimming
- Power Factor >0.90 and THD <20%
- 5 year warranty



Rated Power	Nominal Output Current	DC Output Voltage			Efficiency	Dimensions	Model Name
		Min.	Nom.	Max.			
100W	700mA	100V	-	143V	>92%	211mm X 55mm X 38.5mm	PDA100W-700G-R
100W	1040mA	67V	-	96V	>92%	211mm X 55mm X 38.5mm	PDA100W-1A0G-R

Features

- 120VAC to 277VAC input
- IP67 waterproof
- 0-10V dimming
- Power Factor >0.90 and THD <20%
- 5 year warranty



Rated Power	Nominal Output Current	DC Output Voltage Range			Efficiency	Dimensions	Model Name
		Min.	Typ.	Max			
125W	700mA	134V	-	178.6V	>91%	194mm x 68mm x 37mm	PDA125W-700F-R
125W	1050mA	94V	-	119V	>90%	194mm x 68mm x 37mm	PDA125W-1A0F-R
125W	1400mA	67V	-	89.3V	>90%	194mm x 68mm x 37mm	PDA125W-1A4F-R
125W	2000mA	47V	-	62.5V	>88%	194mm x 68mm x 37mm	PDA125W-2A0F-R
125W	2800mA	34V	-	44.6V	>88%	194mm x 68mm x 37mm	PDA125W-2A8F-R

DIMMABLE CONSTANT CURRENT DRIVERS

CONSTANT VOLTAGE LED DRIVERS

Features

- Open frame design is easily integrated into custom fixtures
- 120VAC to 277VAC universal input
- Power Factor >0.90
- THD <20%
- Non-dimmable
- 3 year warranty



Rated Power	Nominal DC Output Voltage	Output Current Range			Typical Efficiency	Dimensions	Model Name
		Min.	Typ.	Max.			
90W	24V	0.2A	-	3.75A	>85%	169mm x 61mm x 31mm	PSM090-240P-R

Features

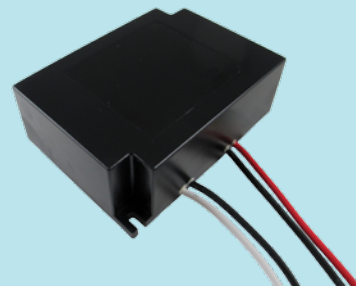
- 120VAC to 277VAC universal input
- IP67 waterproof
- Power Factor >0.90 and THD <20%
- Class 2 per UL1310
- Non-dimmable
- 5 year warranty



Rated Power	Nominal DC Output Voltage	Output Current Range			Efficiency	Dimensions	Model Name
		Min.	Typ.	Max.			
40W	24V	0A	-	1.67A	>87%	162.5mm x 43mm x 32mm	PDA040B-24VB-R
40W	48V	0A	-	0.83A	>87%	162.5mm x 43mm x 32mm	PDA040B-48VB-R

Features

- 120VAC to 277VAC universal input
- IP67 waterproof
- Power Factor >0.90 and THD <20%
- Class 2 per UL1310
- Non-dimmable
- 5 year warranty



Rated Power	Nominal DC Output Voltage	Output Current Range			Efficiency	Dimensions	Product Name
		Min.	Typ.	Max.			
40W	24V	0A	-	1.67A	>87%	95mm x 71mm x 32mm	PDA041B-24VB-R
40W	48V	0A	-	0.83A	>87%	95mm x 71mm x 32mm	PDA041B-48VB-R

Features

- 120VAC to 277VAC universal input
- IP67 waterproof
- Power Factor >0.90 and THD <20%
- Class 2 per UL1310
- Non-dimmable
- 5 year warranty



COMING SOON



Rated Power	Nominal DC Output Voltage	Output Current Range			Efficiency	Dimensions	Model Name
		Min.	Typ.	Max.			
60W	24V	0A	-	2.5A	>87%	162.5mm x 43mm x 32mm	PDA060B-24VB-R
60W	48V	0A	-	1.25A	>87%	162.5mm x 43mm x 32mm	PDA060B-48VB-R

Features

- 120VAC to 277VAC universal input
- IP67 waterproof
- Power Factor >0.90
- THD <20%
- Non-dimmable
- 5 year warranty



Rated Power	Nominal DC Output Voltage	Output Current Range			Efficiency	Dimensions	Model Name
		Min.	Typ.	Max.			
72W	24V	0A	-	3.0A	>85%	242mm x 43.5mm x 30.5mm	PDA072B-24VG-R
80W	48V	0A	-	1.67A	>85%	242mm x 43.5mm x 30.5mm	PDA080B-48VG-R

Features

- 120VAC to 277VAC universal input
- IP67 waterproof
- Power Factor >0.90
- THD <20%
- 0-10V Dimming
- 5 year warranty



Rated Power	Nominal DC Output Voltage	Output Current Range			Efficiency	Dimensions	Model Name
		Min.	Typ.	Max.			
72W	24V	0A	-	3.0A	>85%	242mm x 43.5mm x 30.5mm	PDA072W-24VG-R
80W	48V	0A	-	1.67A	>85%	242mm x 43.5mm x 30.5mm	PDA080W-48VG-R

CONSTANT VOLTAGE DRIVERS



Powering Lighting Solutions



PHIHONG LED DRIVERS

LED DRIVER ADAPTERS



BULB REPLACEMENT DRIVERS



CONSTANT CURRENT LED DRIVERS



LOW PROFILE DRIVERS



IP67 RATED DRIVERS



MULTIPLE-OUTPUT DRIVERS



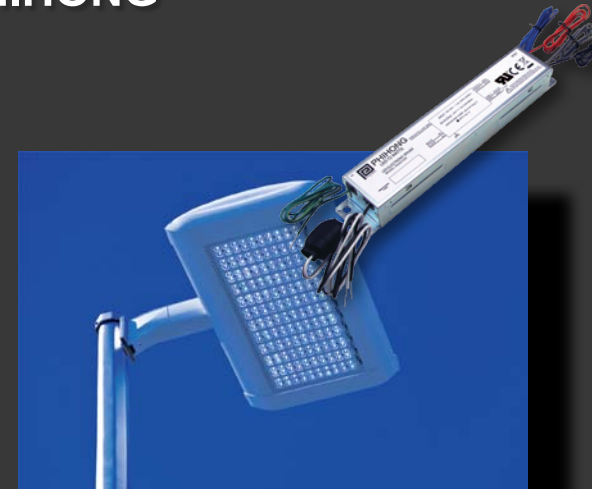
EXTENDED LIFE DRIVERS



RETROFIT BULB DRIVERS



OPEN-FRAME POWER SUPPLIES



Engineered for efficiency



lasting performance



Headquarters:

Phihong Technology Co. Ltd.
No. 568, Fu Xing San Road
Gui Shan Tao Yuan Hsien, Taiwan, R.O.C.
Tel: 886-3-3277288
Fax: 886-3-3185999
E-mail: phsales@phihong.com.tw
www.phihong.com.tw

Worldwide Subsidiaries:

Phihong USA - Fremont, CA
Corporate Office
47800 Fremont Blvd.
Fremont, CA 94538, USA
Tel: 1-510-445-0100
Fax: 1-510-445-1678
E-mail: usasales@phihongusa.com
www.phihong.com

Phihong China - Shanghai
Building 17, No. 1515, GuMei Rd.
XuHui District, Shanghai 200233, P.R.C.
Tel: 86-21-6127-6218
Fax: 86-21-6127-6227
E-mail: phsales@phihong.com.tw

Phihong Europe - Netherlands
Wattstraat 50
2171 TR Sassenheim
The Netherlands
Tel: +31 (0)252 225910
Fax: +31 (0)252 218764
Email: sales@phihongeu.com



X-ON Electronics

Largest Supplier of Electrical and Electronic Components

Click to view similar products for [LED Power Supplies](#) category:

Click to view products by [Phihong](#) manufacturer:

Other Similar products are found below :

[ESS015W-1000-12](#) [PDA-WIFI](#) [PIFC-K250F](#) [PITB-K222A](#) [ALD-514012PJ134](#) [LB240S24KH](#) [LMH020-SPLC-0000-0000001](#) [LMD600-0100-C1A7-7030000](#) [79534](#) [79535](#) [EUG-200S210DT](#) [ESS030W-1050-21](#) [ESS030W-0900-32](#) [BPOXL 4-12-035](#) [ESS010W-0350-24](#) [ESM060W-1400-42](#) [PDA080B-1A0G](#) [PDA150B-S1A5G](#) [ZPS-20](#) [SLM140W-1.05-130-ZA](#) [ESS015W-0700-18](#) [EUD-150S350DVA](#) [LWA320-C420-ARK-B](#) [HVG-240-48AB](#) [HVG-320-36AB](#) [HVG-320-54AB](#) [ELG-240-C1400AB](#) [EUK-150S105DV](#) [BXCS-12Z-N2P-B1-A](#) [BXPR-WN-01-A](#) [LN1224CV](#) [BXCS-12W-N2P-01-A](#) [HBG-160-24AB](#) [980100001200394](#) [980060001200376](#) [LC 14W 250-350MA FLEXC R ADV2](#) [LC 24W 500-600MA FLEXC R ADV2](#) [LC 36W 850-900MA FLEXC R ADV2](#) [LC 18W 24V ONE4ALL SC PRE](#) [LC 50W 200-350ML 170V FLEXC LP SNC4](#) [LC 25W 200-350ML 70V FLEXC LP SNC4](#) [LCBI 10W 350MA PHASE-CUT/1-10V LP](#) [LC 13W 300MA FIXC C SNC](#) [LC 10W 250MA FIXC SC SNC2](#) [LC 35W 800MA FIXC SR ADV2](#) [LC 38W 900MA FIXC SR ADV2](#) [LC 34W 800MA FIXC SC ADV2](#) [LC 44W 1050MA FIXC SC ADV2](#) [LC 38W 900MA 42V FIXC SRL ADV2](#) [PWM-40-36](#)