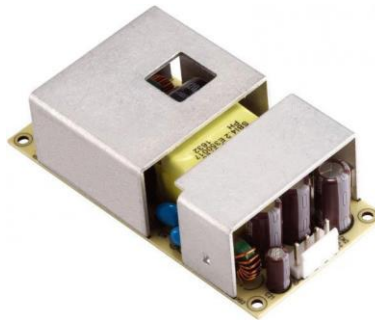




65W 2"x4" Open Frame Medical Power Supply Series



Features

- 2x4" Footprint
- Low Profile
- OVP, SCP and OCP
- < 100 μ A Touch Current
- MOPP x 2
- Low Cost
- Class B EMI
- Meets DOE Level VI
- Class II Design

Applications

- Medical Devices
- Diagnostic Equipment

- Meets IEC/EN/ANSI/AAMI ES 60601-1 (ED 3.1)

Mechanical Characteristics

- Length: 101.6mm (4in)
- Width: 50.8mm (2in)
- Height: 28.1mm (1.12in)
- Weight: 141g (4.97oz)

Output Specifications

Model	Output Voltage	Max Current	Output Power	Regulation	Ripple & Noise ¹ P-P(max)
PML065-120	12V	5A	60W	\pm 5%	150mV
PML065-150	15V	4.34A	65W	\pm 5%	150mV
PML065-180	18V	3.62A	65W	\pm 5%	180mV
PML065-190	19V	3.43A	65W	\pm 5%	190mV
PML065-240	24V	2.71A	65W	\pm 5%	240mV
PML065-480	48V	1.36A	65W	\pm 5%	480mV

Notes: 1. 20 MHz bandwidth frequency oscilloscope and add a 0.1 μ F multilayer cap. and a Low ESR electrolytic cap. (10 μ F) at output connector terminals. (at nominal line voltage, full load)

Phihong is not responsible for any errors and reserves the right to make changes without notice. Please visit our website at www.phihong.com/ for the most up-to-date specifications and contact information.

INPUT:**AC Input Voltage Range**

100 to 240VAC

AC Input Current

1.6A max

Leakage Current

<0.1mA

AC Input Frequency

50-60Hz

AC Inrush Current

80A max/230VAC

(cold start at 25°C, full load)

Input Power Saving $\leq 0.21\text{W}$ at 230VAC, no load**OUTPUT:****Efficiency** $\geq 88\%$ average at 115VAC & 230VAC**Over Voltage Protection**

V out 150%

Short Circuit Protection

Auto-recovery after short-circuit fault being removed

Over Current Protection

I out 180%

ENVIRONMENTAL:**Temperature**

Operation 0 to +50°C

Non-operation -20 to +80°C

Humidity

Operating 20% to 80%

Storage 10% to 90%

EMC

Complies with FCC Part 18 Class B

Complies with EN55011 Class B

Dielectric Strength

Cut off current 10mA

Primary to secondary 4000VAC for 1min

Insulation Resistance

Primary to secondary 10M ohm for 500VDC

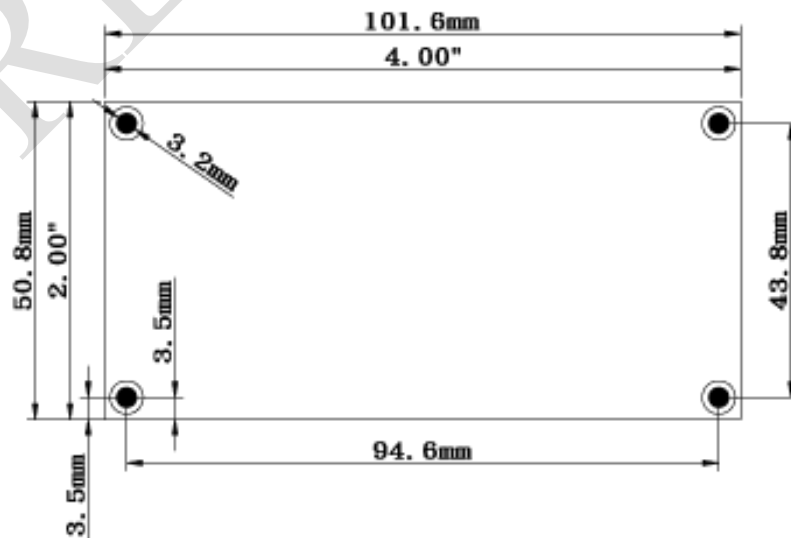
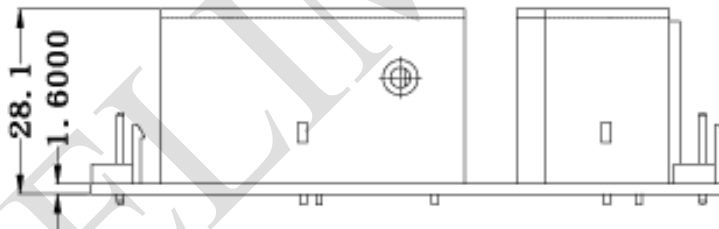
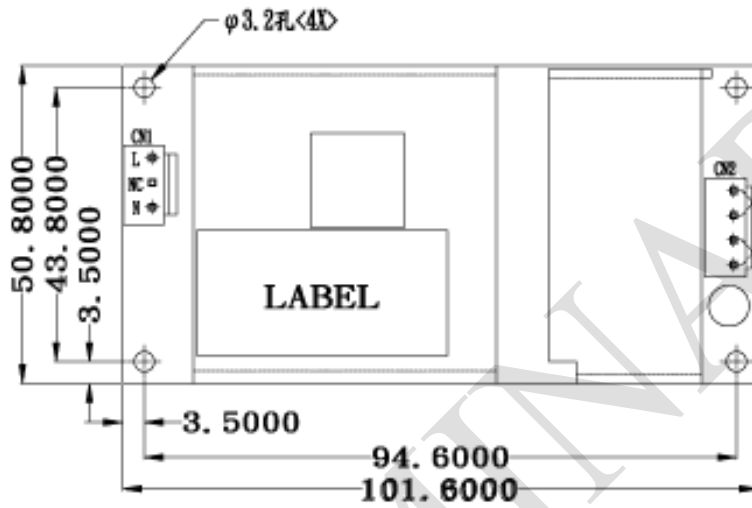
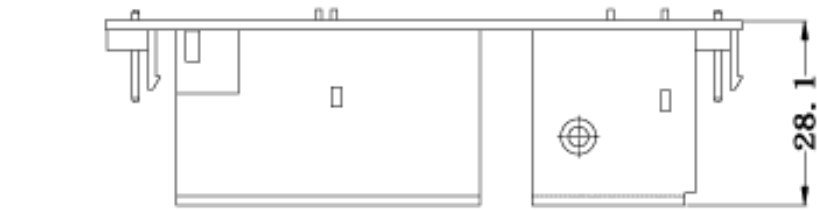
Input Connector

CN1 2PIN WAFER (Pitch=7.92mm)

Output Connector

CN2 4PIN WAFER (Pitch=3.96mm)

Dimension Diagram Unit: mm



X-ON Electronics

Largest Supplier of Electrical and Electronic Components

Click to view similar products for [Switching Power Supplies](#) category:

Click to view products by [Phihong](#) manufacturer:

Other Similar products are found below :

[70841011](#) [73-551-0005](#) [73-551-0048](#) [PS3E-B12F](#) [PS3E-E12F](#) [AAD600S-4-OP](#) [R22095](#) [KD0204](#) [9021](#) [LDIN100150](#) [LPM000-BBAR-01](#)
[LPX17S-C](#) [EVS57-10R6/R](#) [FP80](#) [FRV7000G](#) [22929](#) [PS3E-F12F](#) [CQM1IA121](#) [40370121900](#) [VI-PU22-EXX](#) [40370121910](#) [LDIN5075](#)
[LPM615-CHAS](#) [LPX140-C](#) [09-160CFG](#) [70841025](#) [VPX3000-CBL-DC](#) [LPM000-BBAR-05](#) [LPM000-BBAR-08](#) [LPM124-OUTA1-48](#)
[LPM000-BBAR-07](#) [LPM109-OUTA1-10](#) [LPM616-CHAS](#) [08-30466-1055G](#) [08-30466-2175G](#) [08-30466-2125G](#) [DMB-EWG](#) [TVQF-1219-](#)
[18S](#) [6504-226-2101](#) [CQM1IPS01](#) [SP-300-5](#) [CQM1-IPS02](#) [VI-MUL-ES](#) [22829](#) [08-30466-0065G](#) [VI-RU031-EWWX](#) [08-30466-0028G](#) [VI-](#)
[LUL-EU](#) [EP3000AC48INZ](#) [VP-C2104853](#)