

# Feed-through header - MCV 1,5/12-G-3,81 P26 THRR72 - 1712982

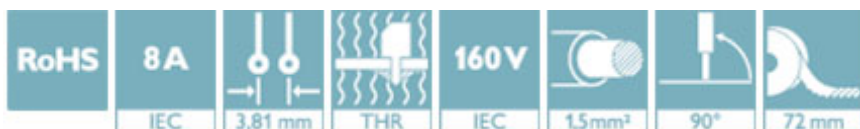
Please be informed that the data shown in this PDF Document is generated from our Online Catalog. Please find the complete data in the user's documentation. Our General Terms of Use for Downloads are valid (<http://phoenixcontact.com/download>)

PCB headers, nominal current: 8 A, rated voltage (III/2): 160 V, number of positions: 12, pitch: 3.81 mm, color: black, contact surface: Tin, mounting: THR soldering



## Your advantages

- Designed for integration into the SMT soldering process
- Vertical connection enables multi-row arrangement on the PCB
- Maximum flexibility when it comes to device design – one header for connectors with different connection technologies



## Key Commercial Data

|                        |               |
|------------------------|---------------|
| Packing unit           | 200 pc        |
| Minimum order quantity | 200 pc        |
| GTIN                   |               |
| GTIN                   | 4046356093309 |

## Technical data

### Dimensions

|                          |              |
|--------------------------|--------------|
| Length [ l ]             | 7.25 mm      |
| Width                    | 43.4 mm      |
| Pitch                    | 3.81 mm      |
| Dimension a              | 41.91 mm     |
| Width [ w ]              | 43.4 mm      |
| Height [ h ]             | 11.8 mm      |
| Height                   | 9.2 mm       |
| Length of the solder pin | 2.6 mm       |
| Pin dimensions           | 0.8 x 0.8 mm |
| Length                   | 7.25 mm      |

### General

|                   |                   |
|-------------------|-------------------|
| Range of articles | MCV 1,5/...-G-THR |
|-------------------|-------------------|

# Feed-through header - MCV 1,5/12-G-3,81 P26 THRR72 - 1712982

## Technical data

### General

|  |                    |
|--|--------------------|
| Insulating material group              | IIIa               |
| Rated surge voltage (III/3)            | 2.5 kV             |
| Rated surge voltage (III/2)            | 2.5 kV             |
| Rated surge voltage (II/2)             | 2.5 kV             |
| Rated voltage (III/3)                  | 160 V              |
| Rated voltage (III/2)                  | 160 V              |
| Rated voltage (II/2)                   | 250 V              |
| Connection in acc. with standard       | EN-VDE             |
| Nominal current $I_N$                  | 8 A                |
| Maximum load current                   | 8 A (per position) |
| Insulating material                    | LCP                |
| Flammability rating according to UL 94 | V0                 |
| Color                                  | black              |
| Number of positions                    | 12                 |

### General information

|              |   |
|--------------|---|
| Type of note | Details for soldering processes   |
| Note         | Processing using reflow processes in compliance with IEC 60068-2-58 or DIN EN 61760-1 (latest version)<br>Moisture Sensitive Level (MSL) = 1 according to IPC/JEDEC J-STD-020-C |

### Standards and Regulations

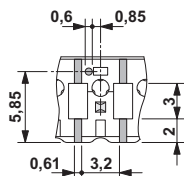
|  |        |
|--|--------|
| Connection in acc. with standard       | EN-VDE |
|  | CUL    |
| Flammability rating according to UL 94 | V0     |

### Environmental Product Compliance

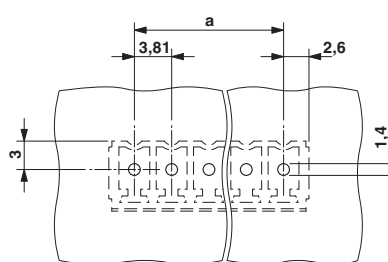
|            |   |
|------------|---|
| China RoHS | Environmentally friendly use period: unlimited = EFUP-e |
|            | No hazardous substances above threshold values          |

## Drawings

Dimensional drawing

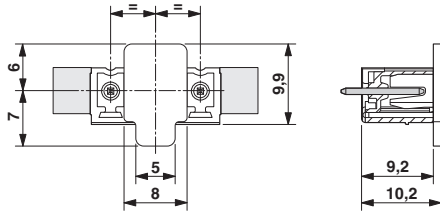


Drilling diagram

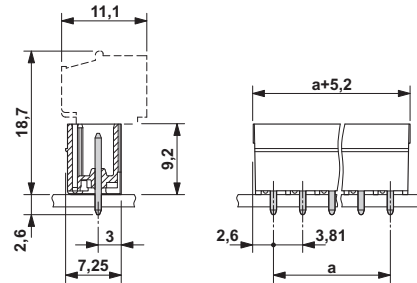


# Feed-through header - MCV 1,5/12-G-3,81 P26 THRR72 - 1712982

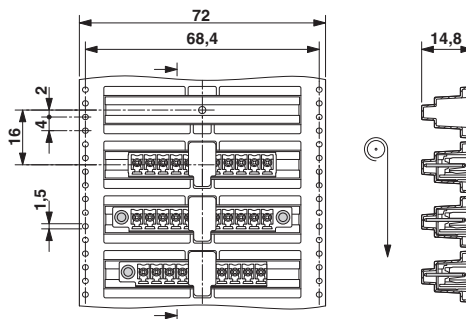
Dimensional drawing



Dimensional drawing



Dimensional drawing



## Approvals

### Approvals

### Approvals

IECEE CB Scheme / VDE Gutachten mit Fertigungsüberwachung / EAC / cULus Recognized


### Ex Approvals

## Approval details


|                    |       |   |                |
|--------------------|-------|---|----------------|
| IECEE CB Scheme    |       | <a href="http://www.iecee.org/">http://www.iecee.org/</a> | DE1-60987-B1B2 |
| Nominal voltage UN | 160 V |   |                |
| Nominal current IN | 8 A   |   |                |

# Feed-through header - MCV 1,5/12-G-3,81 P26 THRR72 - 1712982

## Approvals

|  |   |  |          |
|--|---|--|----------|
| VDE Gutachten mit<br>Fertigungsüberwachung |  | <a href="http://www2.vde.com/de/Institut/Online-Service/VDE-gepruefteProdukte/Seiten/Online-Suche.aspx">http://www2.vde.com/de/Institut/Online-Service/<br/>VDE-gepruefteProdukte/Seiten/Online-Suche.aspx</a> | 40011723 |
| Nominal voltage UN                         |   | 160 V  |          |
| Nominal current IN                         |   | 8 A  |          |

|     |   |         |
|-----|---|---------|
| EAC |  | B.01742 |
|-----|---|---------|

|                    |   |   |                 |
|--------------------|---|---|-----------------|
| cULus Recognized   |  | <a href="http://database.ul.com/cgi-bin/XYV/template/LISEXT/1FRAME/index.htm">http://database.ul.com/cgi-bin/XYV/template/LISEXT/1FRAME/index.htm</a> | E60425-20110128 |
|                    | D   | B   |                 |
| Nominal voltage UN | 300 V   | 300 V   |                 |
| Nominal current IN | 8 A   | 8 A   |                 |

Phoenix Contact 2018 © - all rights reserved  
<http://www.phoenixcontact.com>

PHOENIX CONTACT GmbH & Co. KG  
 Flachsmarktstr. 8  
 32825 Blomberg  
 Germany  
 Tel. +49 5235 300  
 Fax +49 5235 3 41200  
<http://www.phoenixcontact.com>

## X-ON Electronics

Largest Supplier of Electrical and Electronic Components

*Click to view similar products for [Pluggable Terminal Blocks](#) category:*

*Click to view products by [Phoenix Contact](#) manufacturer:*

Other Similar products are found below :

[57.510.0053](#) [MC 1.5/ 6-ST-3.5 GY AU](#) [734-104](#) [734-302](#) [8-141-P](#) [8426620000](#) [860505](#) [860810](#) [GBPACX-12](#) [93.731.4953.0](#) [PV05-5,08-K](#)  
[PVP02-5,00](#) [PVP03-3,50](#) [PVP04-3,50](#) [PVS02-5,00](#) [1-1986160-3](#) [1377680000](#) [1531000000](#) [1546228-5](#) [ELFH16150](#) [ELFP03110](#)  
[ELFP10210](#) [ELFT06250](#) [ELVP03100](#) [1700101](#) [1700410](#) [1700425](#) [1702246](#) [1705229](#) [1710175](#) [1714537](#) [1717806](#) [1719600](#) [1728941](#)  
[1734692](#) [1734795](#) [1736036](#) [1740194](#) [1740291](#) [1740628](#) [1740990](#) [1746952](#) [1750207](#) [1752441](#) [1752865](#) [1754115](#) [1754144](#) [1756913](#)  
[1760051](#) [1760336](#)